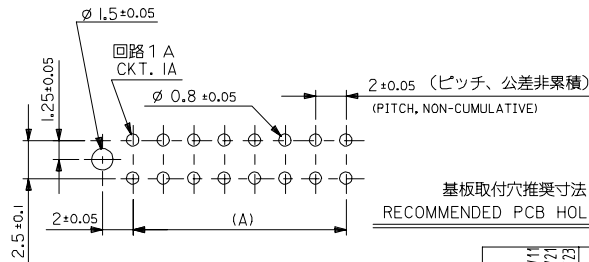
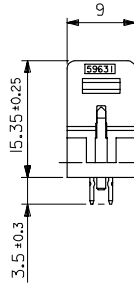
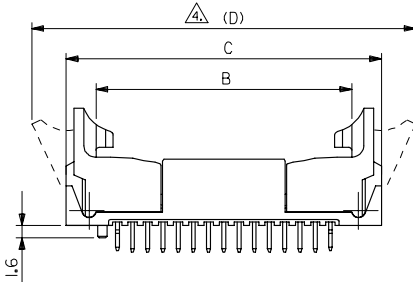
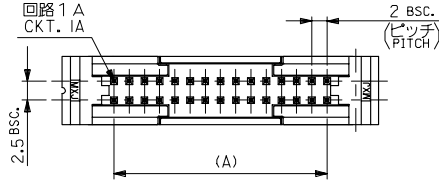


10 9 8 7 6 5 4 3 2 1



基板取付穴推奨寸法 (参考)
RECOMMENDED PCB HOLE DIM.(REF.)

注記
NOTES

1. 材料:
MATERIALS:
ウエハー : ガラス入り 66ナイロン
UL 94V-0 色: グレー
WAFER : GLASS FILL 66 NYLON
UL 94V-0, COLOR : GRAY
ピン : 黄銅, スズメッキ
PIN : BRASS, PRE-TINNED
2. 適合メスコネクタ : 51089-***5, 52478-***15,
MATING CONNECTORS :
3. 推奨基板厚 :
RECOMMENDED PCB THICKNESS : t
イジェクターが開いている状態。
EJECTORS IN OPEN POSITION
5. メッキ仕様
TERMINAL PLATING
表面メッキ : スズメッキ 14μm MIN.
SURFACE PLATE : TIN 14μm MIN.
下地メッキ : ニッケルメッキ 0.5μm MIN.
UNDER PLATE : NICKEL 0.5μm MIN.

無鉛
LEAD FREE

80.4	71.4	63.6	58	53314-6065	60
70.4	61.4	53.6	48	-5065	50
60.4	51.4	43.6	38	-4065	40
54.4	45.4	37.6	32	-3465	34
50.4	41.4	33.6	28	53314-3065	30
(D)	C	B	(A)	MATERIAL NO.	CKT.

MATERIAL
材料
注記参照
SEE NOTES

REVISED REV A	EC NO. J2007-0432	2006/08/11	GENERAL TOLERANCES (UNLESS SPECIFIED)	DIMENSION STYLE MM ONLY	SCALE 2:1	DESIGN UNITS METRIC	THIRD ANGLE PROJECTION
	DRW:KSAI1001	2006/08/21	10 UNDER ±0.2	DRAWN BY A. IDA	DATE 2003/05/07	TITLE 2.0 W/B DUAL ROW S/T HEADER WITH EJECT ASSY	
	CHKC:THRUJANA	2006/08/21	10 OVER 30 UNDER ±0.25	CHECKED BY J. MIYAZAWA	DATE 2003/05/07		
	APPR:NIKIITA	2006/08/23	30 OVER ±0.3	APPROVED BY Y. ITO	DATE 2003/05/07		
			ANGULAR ±3 °	MATERIAL NO. SEE CHART	DOCUMENT NO. SD-53314-001	MOLEX INCORPORATED	SHEET NO. 1 OF 1
			DRAFT WHERE APPLICABLE MUST REMAIN WITHIN DIMENSIONS	SIZE A3	THIS DRAWING CONTAINS INFORMATION THAT IS PROPRIETARY TO MOLEX INCORPORATED AND SHOULD NOT BE USED WITHOUT WRITTEN PERMISSION		