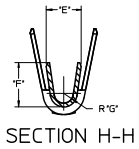
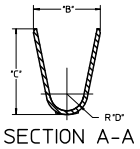
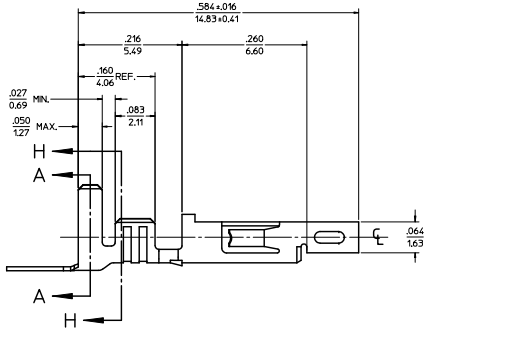
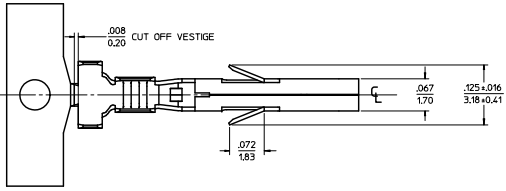
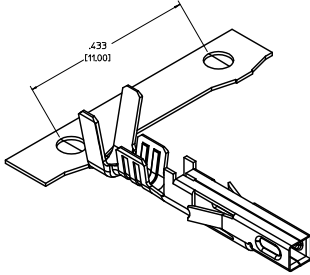


ITEM NO.	FORM	WIRE GAGE	DIM 'B'	DIM 'C'	DIM 'D'	DIM 'E'	DIM 'F'	DIM 'G'	PLATING: SEE NOTE 2
45750111	CHAIN	18-20	.142±.012 (3.60±0.30)	.177±.016 (4.50±0.40)	.035 (0.90)	.075±.012 (1.90±0.30)	.091±.016 (2.30±0.40)	.020 (0.50)	1 TIN OVER NICKEL
45750112	LOOSE								
45750311	CHAIN	16	.142±.012 (3.60±0.30)	.177±.016 (4.50±0.40)	.035 (0.90)	.091±.012 (2.30±0.30)	.106±.016 (2.70±0.40)	.024 (0.60)	
45750312	LOOSE								
45750211	CHAIN	18-20	.142±.012 (3.60±0.30)	.177±.016 (4.50±0.40)	.035 (0.90)	.075±.012 (1.90±0.30)	.091±.016 (2.30±0.40)	.020 (0.50)	2 SELECT GOLD OVER NICKEL
45750212	LOOSE								
45750321	CHAIN	16	.142±.012 (3.60±0.30)	.177±.016 (4.50±0.40)	.035 (0.90)	.091±.012 (2.30±0.30)	.106±.016 (2.70±0.40)	.024 (0.60)	
45750322	LOOSE								

NOTES:

- MATERIAL: COPPER ALLOY .0080(0.203) THICK
- FINISH:
1. .000100(0.00254) MIN. BRIGHT TIN OVER .000050(0.00127) MIN NICKEL OVERALL.
2. .00030(0.00076) MIN. SELECT GOLD IN CONTACT AREA AND .000100(0.00254) MIN. SELECT MATTE TIN IN CRMP AREA OVER .000050(0.00127) MIN. NICKEL OVERALL.
GOLD PLATING RECOMMENDED FOR APPLICATIONS WHERE FRETTING CORROSION IS A CONCERN.
- PRODUCT SPECIFICATION: PS-45750-001 (JR)
PS-45750-002 (888)
PS-45750-003 (TPAI)
- PACKAGING SPECIFICATION: PK-45750-001 FOR CHAIN TERMINALS
PK-5556-003 FOR LOOSE TERMINALS
- TERMINAL FOR USE WITH 5557, 42474, 445%, 43760, AND 30067 SERIES HOUSINGS.
- WHEN TERMINALS ARE INSTALLED IN THE HOUSING, THE WIRES ARE TO BE DRESSED IN SUCH A MANNER TO ALLOW THE TERMINALS TO FLOAT FREELY IN THE POCKET.
- THIS TERMINAL IS DESIGNED FOR SINGLE WIRE CRIMPING.



LEGEND

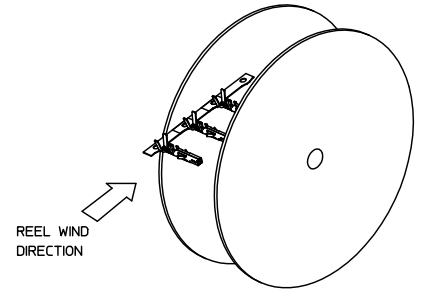
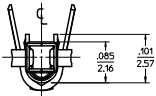
45750 * * 1 *

BASE NUMBER: 45750

FORM: 1 = CHAIN, 2 = LOOSE

WIRE GAGE: 1 = 18-20, 3 = 16

PLATING (SEE NOTE 2): 1 = TIN OVER NICKEL, 2 = SELECT GOLD



RoHS COMPLIANT

QUALITY SYMBOLS	GENERAL TOLERANCES (UNLESS SPECIFIED)		DIMENSION STYLE		SCALE	DESIGN UNITS	THIRD ANGLE PROJECTION
	F	M	IN/	MM	10:1	INCH	
▽0	4 PLACES ± .010	± .010	SML	2004/01/30			FEMALE CRIMP TERMINAL, H.C.S.PLUS, MINI-FIT JR. SERIES
▽1	3 PLACES ± .015	± .015	MMO	2004/01/30			MOLEX INCORPORATED
▽2	2 PLACES ± 0.25	± .014	AP	2004/02/05			
▽3	1 PLACE ± 0.36	± .010					
		ANGULAR ± 1/2°					

DRAFT WHERE APPLICABLE MUST REMAIN WITHIN DIMENSIONS

MATERIAL NO. SD-45750-001 DOCUMENT NO. SD-45750-001 SHEET NO. 1 OF 1

SEE CHART THIS DRAWING CONTAINS INFORMATION THAT IS PROPRIETARY TO MOLEX INCORPORATED AND SHOULD NOT BE USED WITHOUT WRITTEN PERMISSION

19. Jframe_D.P. AM.1 Rev. D 2004/06/28