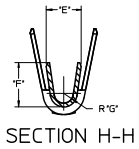
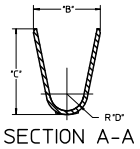
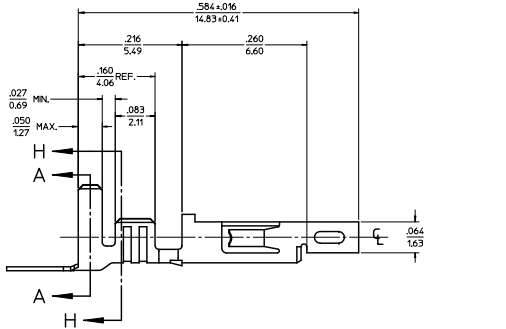
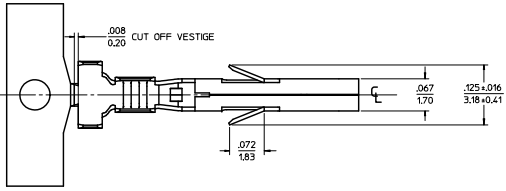
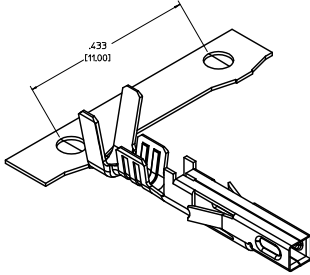


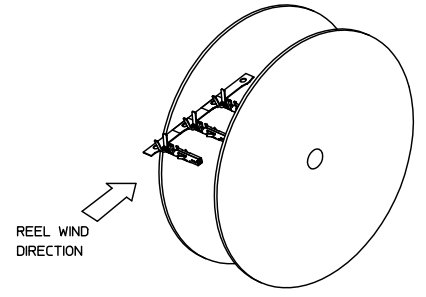
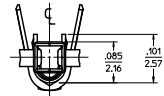
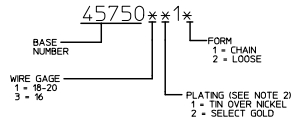
ITEM NO.	FORM	WIRE GAGE	DIM 'B'	DIM 'C'	DIM 'D'	DIM 'E'	DIM 'F'	DIM 'G'	PLATING: SEE NOTE 2
45750111	CHAIN	18-20	.142±.012 (3.60±0.30)	.177±.016 (4.50±0.40)	.035 (0.90)	.075±.012 (1.90±0.30)	.091±.016 (2.30±0.40)	.020 (0.50)	1 TIN OVER NICKEL
45750112	LOOSE								
45750311	CHAIN	16	.142±.012 (3.60±0.30)	.177±.016 (4.50±0.40)	.035 (0.90)	.091±.012 (2.30±0.30)	.106±.016 (2.70±0.40)	.024 (0.60)	
45750312	LOOSE								2 SELECT GOLD OVER NICKEL
45750211	CHAIN	18-20	.142±.012 (3.60±0.30)	.177±.016 (4.50±0.40)	.035 (0.90)	.075±.012 (1.90±0.30)	.091±.016 (2.30±0.40)	.020 (0.50)	
45750212	LOOSE								
45750321	CHAIN	16	.142±.012 (3.60±0.30)	.177±.016 (4.50±0.40)	.035 (0.90)	.091±.012 (2.30±0.30)	.106±.016 (2.70±0.40)	.024 (0.60)	
45750322	LOOSE								

NOTES:

- MATERIAL: COPPER ALLOY .0080(0.203) THICK
- FINISH:
1. .000100(0.00254) MIN. BRIGHT TIN OVER .000050(0.00127) MIN NICKEL OVERALL.
2. .00030(0.00076) MIN. SELECT GOLD IN CONTACT AREA AND .000100(0.00254) MIN. SELECT MATTE TIN IN CRMP AREA OVER .000050(0.00127) MIN. NICKEL OVERALL.
GOLD PLATING RECOMMENDED FOR APPLICATIONS WHERE FRETTING CORROSION IS A CONCERN.
- PRODUCT SPECIFICATION: PS-45750-001 (JR)
PS-45750-002 (888)
PS-45750-003 (TPAI)
- PACKAGING SPECIFICATION: PK-45750-001 FOR CHAIN TERMINALS
PK-5556-003 FOR LOOSE TERMINALS
- TERMINAL FOR USE WITH 5557, 42474, 445%, 43760, AND 30067 SERIES HOUSINGS.
- WHEN TERMINALS ARE INSTALLED IN THE HOUSING, THE WIRES ARE TO BE DRESSED IN SUCH A MANNER TO ALLOW THE TERMINALS TO FLOAT FREELY IN THE POCKET.
- THIS TERMINAL IS DESIGNED FOR SINGLE WIRE CRIMPING.



LEGEND



RoHS COMPLIANT

ADDED PACKAGING NOTES ESD PREVENTION CHAINING HABILAR 2009/10/23 CHYKO-BELL 2009/10/23 APPROVED: 2009/12/28	QUALITY SYMBOLS ▽ 0 ▽ 1	GENERAL TOLERANCES (UNLESS SPECIFIED) <table border="1"> <thead> <tr> <th></th> <th>mm</th> <th>INCH</th> </tr> </thead> <tbody> <tr> <td>4 PLACES ±</td> <td>± .15</td> <td>± .005</td> </tr> <tr> <td>3 PLACES ±</td> <td>± .10</td> <td>± .004</td> </tr> <tr> <td>2 PLACES ±</td> <td>± .075</td> <td>± .003</td> </tr> <tr> <td>1 PLACE ±</td> <td>± .05</td> <td>± .002</td> </tr> </tbody> </table> ANGULAR ±1/2°		mm	INCH	4 PLACES ±	± .15	± .005	3 PLACES ±	± .10	± .004	2 PLACES ±	± .075	± .003	1 PLACE ±	± .05	± .002	DIMENSION STYLE IN/MM	SCALE: 10:1 DESIGN UNITS: INCH THIRD ANGLE PROJECTION
		mm	INCH																
	4 PLACES ±	± .15	± .005																
	3 PLACES ±	± .10	± .004																
2 PLACES ±	± .075	± .003																	
1 PLACE ±	± .05	± .002																	
			DRAWN BY: SML DATE: 2004/01/30 CHECKED BY: DATE: APPROVED BY: AP DATE: 2004/01/30	TITLE: FEMALE CRIMP TERMINAL, H.C.S.PLUS, MINI-FIT JR. SERIES MOLEX INCORPORATED															
		MATERIAL NO.: SEE CHART SD-45750-001	DOCUMENT NO.: SD-45750-001	SHEET NO.: 1 OF 1															
		DRAFT WHERE APPLICABLE MUST REMAIN WITHIN DIMENSIONS	THIS DRAWING CONTAINS INFORMATION THAT IS PROPRIETARY TO MOLEX INCORPORATED AND SHOULD NOT BE USED WITHOUT WRITTEN PERMISSION																