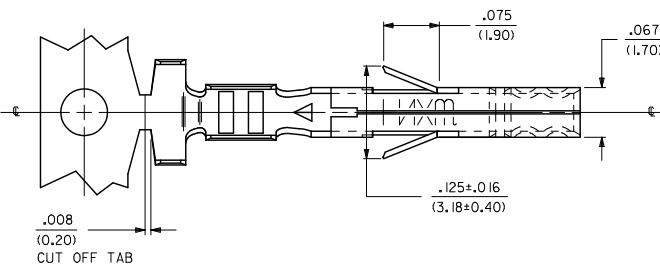
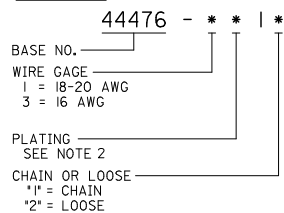


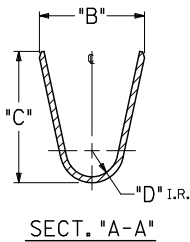
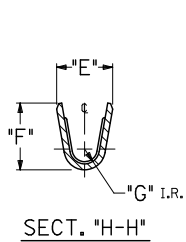
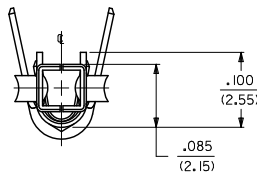
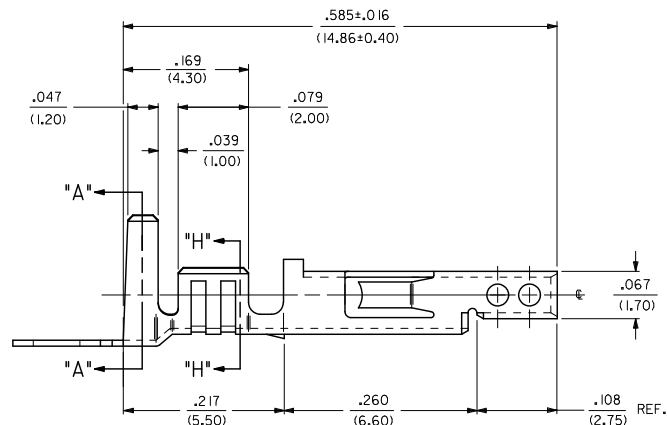
ITEM NO.	FORM	WIRE GAGE	QUANTITY PER REEL	DIM. "B"	DIM. "C"	DIM. "D"	DIM. "E"	DIM. "F"	DIM. "G"
44476-1111	CHAIN	18-20 GA.	4,000	.142±.012	.177±.016	.035	.075±.012	.091±.016	.020
44476-1112	LOOSE			(3.60±0.30)	(4.50±0.40)	(0.90)	(1.90±0.30)	(2.30±0.40)	(0.50)
44476-3111	CHAIN	16 GA.	4,000	.142±.012	.177±.016	.035	.091±.012	.106±.016	.024
44476-3112	LOOSE			(3.60±0.30)	(4.50±0.40)	(0.90)	(2.30±0.30)	(2.70±0.40)	(0.60)

**LEGEND:**



**NOTES:**

- MATERIAL: COPPER ALLOY, .008/(.203) THICK.
- FINISH:
  - \*1 = POSTPLATE .000100/(.00254) MIN. BRIGHT TIN OVER .000050/(0.00127) MIN. NICKEL OVERALL.
  - \*THE PRIMARY SHIPPING CARTON WILL BE LABELED "COMPLIANT TO RoHS DIRECTIVE 2002/95/EC AND ELV ANNEX II OF DIRECTIVE 2000/53/EC." CARTONS WITHOUT THIS LABEL MAY CONTAIN PRODUCT WITH TIN-LEAD PLATING.
- PRODUCT SPECIFICATION AND PROCESSING PARAMETERS: SEE PS-44476-001.
- PACKAGING SPECIFICATION: PK-44476-001 FOR CHAIN TERMINALS  
PK-5556-003 FOR LOOSE TERMINALS
- MATES WITH 44478 MALE TERMINAL AND 43810, 44068, 44472, 44473, 44474, 42404, 5569 AND 30070 SERIES CONNECTORS.
- TERMINAL FOR USE WITH 5557, 30067 & 42474 SERIES HOUSINGS.
- ITEM NUMBERS PRECEDED BY AN "X" IN THE CHART ARE NOT AVAILABLE.



<b>CHANGED NOTE 4</b> EC NO. UCP2010-0471 DRAWN: JAGUILAR 2009/12/23 CHKD: BELL 2009/12/23 APPROV: SMITH 2009/12/28 REV. DESCRIPTION	QUALITY SYMBOLS	GENERAL TOLERANCES (UNLESS SPECIFIED)	DIMENSION STYLE IN/MM	SCALE 10:1	DESIGN UNITS METRIC	THIRD ANGLE PROJECTION		
	$\nabla=0$ $\nabla=0$	4 PLACES ±.010 ±.010 3 PLACES ±.010 ±.010 2 PLACES ±.025 ±.014 1 PLACE ±.038 ±.014 ANGULAR ±1/2°	DRAWN BY GEP DATE 1992/09/14 CHECKED BY R/JF DATE 1992/09/14 APPROVED BY R/JF DATE 1992/09/14	TITLE	TERMINAL, FEMALE, CRIMP MINI-FIT H.C.S. SERIES BLANK-PLATE-FORM	MATERIAL NO.	DOCUMENT NO. SD-44476-****	SHEET NO. 1 OF 1
	DRAFT WHERE APPLICABLE MUST REMAIN WITHIN DIMENSIONS	SEE CHART	MOLEX INCORPORATED THIS DRAWING CONTAINS INFORMATION THAT IS PROPRIETARY TO MOLEX INCORPORATED AND SHOULD NOT BE USED WITHOUT WRITTEN PERMISSION					