

- NOTE
- MATERIAL
 - BRASS (CDA 260)
 - PHOSPHOR BRONZE (CDA 510)
 - PLATING
 - PRE PLATED - TIN OVER COPPER
 - POST PLATED - TIN/LEAD OVER COPPER
 - USED HOUSING : 35022-00**/35023-00**/68418-***00

POST-PLATED	PHOS. BRON.	AWG #24-#30	1.8	1.9	R0.4	0.85	350211310	35021-1310
PRE-PLATED	PHOS. BRON.	(INS. DIA: \varnothing 1.5 MAX.)					350211301	35021-1301
	BRASS						350211201	35021-1201
PRE-PLATED	PHOS. BRON.	AWG #22-#28	2.5	2.5	R0.7	1.05	350211101	35021-1101
	BRASS	(INS. DIA: \varnothing 1.9 MAX.)					350211001	35021-1001
POST-PLATED	PHOS. BRON.						350211110	35021-1110
PLATING	MATERIAL	WIRE RANGE	D	C	B	A	MAT'L NO.	ENG NO.

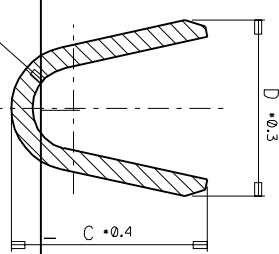
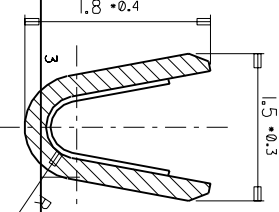
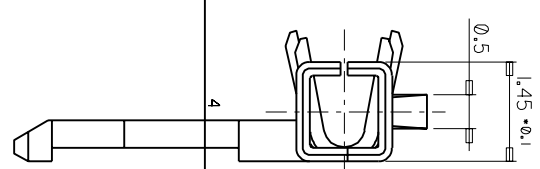
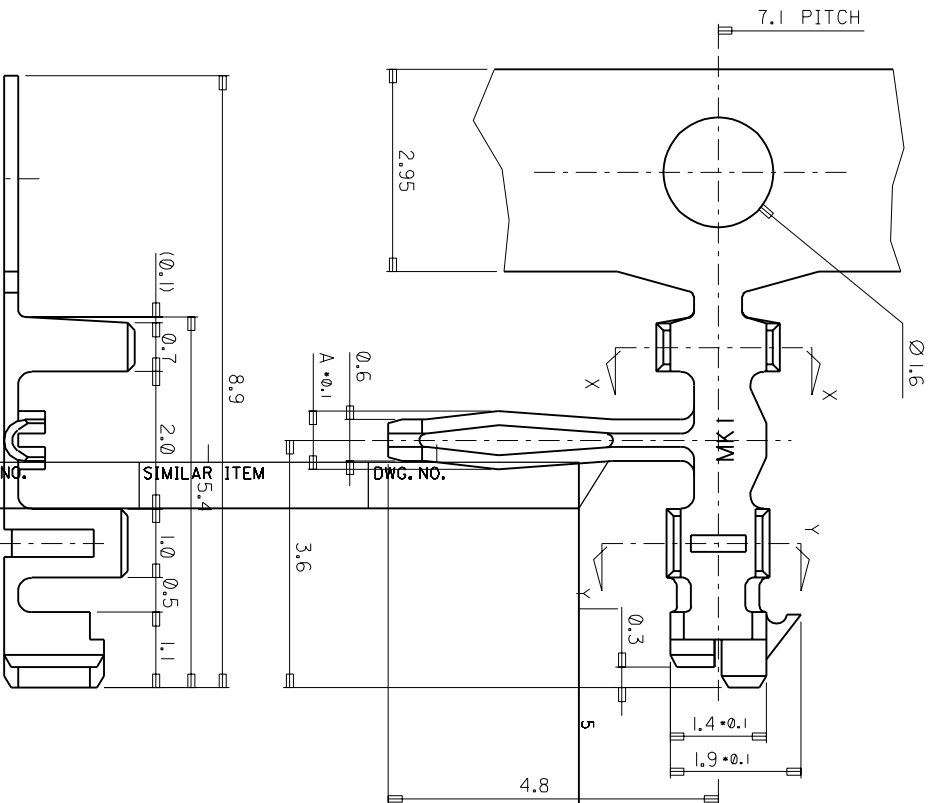
DO NOT SCALE DRAWING
DIMENSION IN METRIC

REVISIONS EC NO: KOR2007-0027 DRWN: JHLEE 06/09/13 CHK: KSJIM 06/09/13 APPR: YSOOKIM 06/09/13	QUALITY SYMBOLS	GENERAL TOLERANCES: (UNLESS SPECIFIED)	SCALE 15-1	DESIGN UNITS <input checked="" type="checkbox"/> mm <input type="checkbox"/> INCH	THIRD ANGLE PROJECTION <input checked="" type="checkbox"/> <input type="checkbox"/>	DIMENSIONS: <input type="checkbox"/> mm <input type="checkbox"/> INCH <input checked="" type="checkbox"/> mm ONLY	SHT	REV
	MAJOR	mm	INCH	DRAWN BY & DATE	TITLE:			
	CRITICAL	4 PLACES ±0. ±.	HSSHIN	CHECKED BY & DATE	R/A B-IN TERMINAL			
	✓	3 PLACES ±0. ±.	JKOH	APPROVED BY & DATE				
REY	DESCRIPTION	1 PLACE ±0.3 ±.	CWLEE	CAD FILENAME	MATERIAL NO.	DRAWING NO.	SHEET NO.	SIZE
		ANGULAR: ± 1 °		SD35021.DGN	SEE TABLE	SD-35021-001	10F1	B
DRAFT WHERE APPLICABLE MUST REMAIN WITHIN DIMENSIONS				THIS DRAWING CONTAINS INFORMATION THAT IS PROPRIETARY TO MOLEX INCORPORATED AND SHOULD NOT BE USED WITHOUT WRITTEN PERMISSION.				

MX-A3

DO NOT SCALE DRAWING
DIMENSION IN METRIC

PROJECT NO. SIMILAR ITEM DWG. NO.
35021-1*** SD 35021-1***



NOTE

1. MATERIAL
 - 1) BRASS (CDA 260)
 - 2) PHOSPHOR BRONZE (CDA 510)
2. PLATING
 - 1) PRE PLATED - TIN OVER COPPER
 - 2) POST PLATED - TIN/LEAD OVER COPPER
3. USED HOUSING : 35022-00** / 35023-00**

POST-PLATED	PHOS. BRON.	AWG #24-#30	1.8	1.9	R0.4	0.85	35021-1310
PRE-PLATED	PHOS. BRON.	(INS. DIA: Ø 1.5 MAX.)	1.8	1.9	R0.4	0.85	35021-1301
POST-PLATED	PHOS. BRON.	AWG #22-#30 (INS. DIA: Ø 1.9 MAX.)	2.5	2.5	R0.7	1.05	35021-1101
PLATING	MATERIAL	WIRE RANGE	D	C	B	A	ENG. NO.
							35021-1110

REVISED
EC NO. KOR1998-0091
DRWN: HSSHIN(980609)
CHK: JKOH
APPR: CWLEE

REVISIONS
REV DESCRIPTION
C CRITICAL

QUALITY SYMBOLS	GENERAL TOLERANCES: (UNLESS SPECIFIED)	SCALE	DESIGN UNITS	THIRD ANGLE PROJECTION	TITLE
MAJOR	±0.1	15-1	MM	<input checked="" type="checkbox"/>	R/A B-IN TERMINAL
MINOR	±0.05		MM	<input type="checkbox"/>	
CRITICAL	±0.02		MM	<input type="checkbox"/>	

DRAWN BY & DATE: HSSHIN
CHECKED BY & DATE: JKOH
APPROVED BY & DATE: CWLEE

CAD FILENAME: SD35021.DGN
MATERIAL NO.: 35021-1***
DRAWING NO.: SD 35021-1***
SHEET NO.: 10F1
SIZE: A

MX-AB