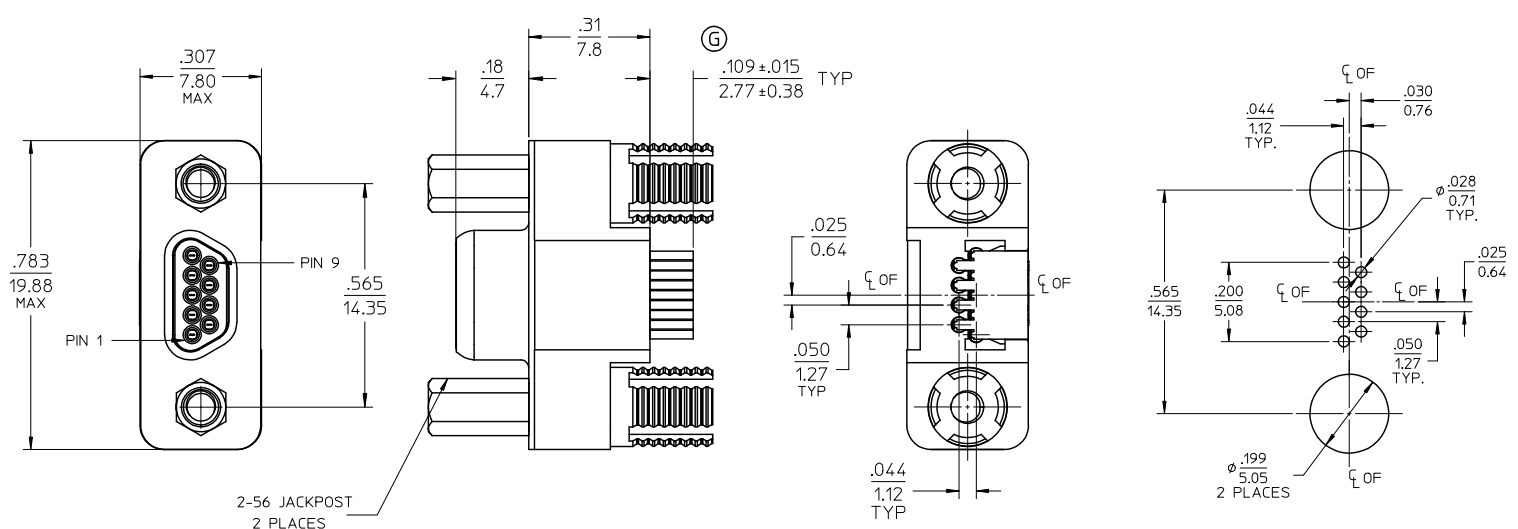


10 9 8 7 6 5 4 3 2 1



2. RoHS COMPLIANT
 1. REFER TO PS-83421-9000 FOR PRODUCT SPECIFICATION.
 NOTES: UNLESS OTHERWISE SPECIFIED.

| UPDATE DIM EC NO: WNA2010-0213 2009/09/23 G DRWN: BRIPERT CHYK: BRIPERT 2009/10/23 APPR: JFMURPHY 2009/10/27 | QUALITY SYMBOLS | GENERAL TOLERANCES (UNLESS SPECIFIED) | DIMENSION STYLE | SCALE | DESIGN UNITS | THIRD ANGLE PROJECTION | | | | | | | | | | | | | | | |
|---|--|---|-----------------|-------|--------------|------------------------|--------|---------|----------|--------|---------|----------|--------|---------|---------|--------|---------|-------|-----|------|--|
| | $\nabla=0$ $\sphericalangle=0$ | <table border="1"> <tr> <th></th> <th>mm</th> <th>INCH</th> </tr> <tr> <td>4 PLACES</td> <td>± .005</td> <td>± .0005</td> </tr> <tr> <td>3 PLACES</td> <td>± .010</td> <td>± .0010</td> </tr> <tr> <td>2 PLACES</td> <td>± .015</td> <td>± .0020</td> </tr> <tr> <td>1 PLACE</td> <td>± .025</td> <td>± .0040</td> </tr> </table> | | mm | INCH | 4 PLACES | ± .005 | ± .0005 | 3 PLACES | ± .010 | ± .0010 | 2 PLACES | ± .015 | ± .0020 | 1 PLACE | ± .025 | ± .0040 | IN/MM | 4:1 | INCH | |
| | | mm | INCH | | | | | | | | | | | | | | | | | | |
| | 4 PLACES | ± .005 | ± .0005 | | | | | | | | | | | | | | | | | | |
| 3 PLACES | ± .010 | ± .0010 | | | | | | | | | | | | | | | | | | | |
| 2 PLACES | ± .015 | ± .0020 | | | | | | | | | | | | | | | | | | | |
| 1 PLACE | ± .025 | ± .0040 | | | | | | | | | | | | | | | | | | | |
| DRAFT WHERE APPLICABLE MUST REMAIN WITHIN DIMENSIONS | DRAWN BY: D. URBACH DATE: 14 JUNE 00 CHECKED BY: AW DATE: 20 JUL 00 APPROVED BY: JFMURPHY DATE: 2009/10/23 MATERIAL NO.: 836119023 | TITLE: CONN, PLUG, VERT COMM-D, SIZE 9 MOLEX INCORPORATED DOCUMENT NO.: SD-83611-9023 SHEET NO.: 1 OF 1 | | | | | | | | | | | | | | | | | | | |
| SIZE: A3 THIS DRAWING CONTAINS INFORMATION THAT IS PROPRIETARY TO MOLEX INCORPORATED AND SHOULD NOT BE USED WITHOUT WRITTEN PERMISSION | | | | | | | | | | | | | | | | | | | | | |

ib_frame_A3_P_AM_T
 Rev. E 2006/04/15

9 8 7 6 5 4 3 2 1