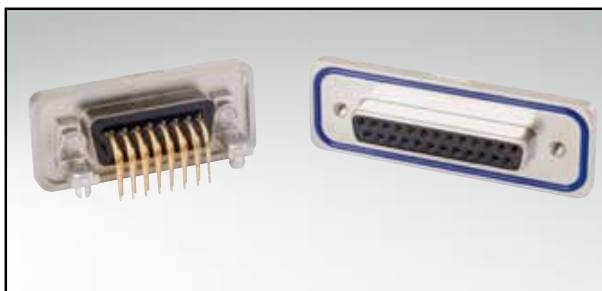


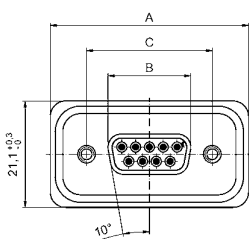
# D-SUB STANDARD – IP67 SOLID BODY

Solder pin – Angled – .402" / 10.2 mm – Precision machined contacts – Metal bracket



RoHS compliant

## SOCKET CONNECTOR



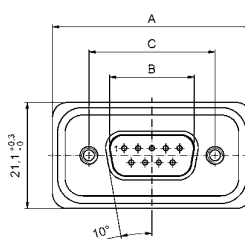
| No. of pos. | A $\begin{smallmatrix} +0.2 \\ 0 \end{smallmatrix}$ | B $\begin{smallmatrix} +0 \\ -0.25 \end{smallmatrix}$ | C  |
|-------------|---|---|--|
| 09          | 39.40   | 16.46   | 25.00 $\begin{smallmatrix} +0.12 \\ -0.12 \end{smallmatrix}$ |
| 15          | 47.70   | 24.79   | 33.32 $\begin{smallmatrix} +0.13 \\ -0.12 \end{smallmatrix}$ |
| 25          | 61.40   | 38.50   | 47.04 $\begin{smallmatrix} +0.13 \\ -0.12 \end{smallmatrix}$ |
| 37          | 78.00   | 54.96   | 63.50 $\begin{smallmatrix} +0.13 \\ -0.12 \end{smallmatrix}$ |

PCB layout Kat1kGMA

## DESCRIPTION

- Mounting style: mounting bracket, 4-40 UNC PCB clip including hex locking bolt
- Quality class 3 (also available in quality class 1)
- One-piece zinc die-cast nickel plated shell
- IP67 for harsh environments, pressure-proof up to 1.45 PSI
- Higher protection on request

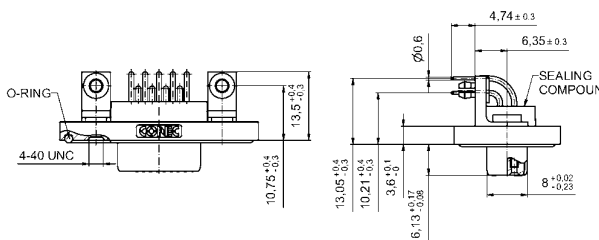
## PLUG CONNECTOR



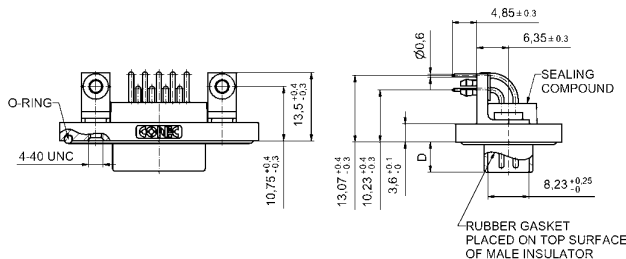
| No. of pos. | A $\begin{smallmatrix} +0.2 \\ 0 \end{smallmatrix}$ | B $\begin{smallmatrix} +0 \\ -0.25 \end{smallmatrix}$ | C  | D   |
|-------------|---|---|--|---|
| 09          | 39.40   | 16.81   | 25.00 $\begin{smallmatrix} +0.12 \\ -0.12 \end{smallmatrix}$ | 6.00 $\begin{smallmatrix} +0.12 \\ -0.12 \end{smallmatrix}$ |
| 15          | 47.70   | 25.14   | 33.32 $\begin{smallmatrix} +0.13 \\ -0.12 \end{smallmatrix}$ | 6.00 $\begin{smallmatrix} +0.12 \\ -0.12 \end{smallmatrix}$ |
| 25          | 61.40   | 38.86   | 47.04 $\begin{smallmatrix} +0.13 \\ -0.12 \end{smallmatrix}$ | 5.99 $\begin{smallmatrix} +0 \\ -0.3 \end{smallmatrix}$     |
| 37          | 78.00   | 55.32   | 63.50 $\begin{smallmatrix} +0.13 \\ -0.12 \end{smallmatrix}$ | 5.99 $\begin{smallmatrix} +0 \\ -0.3 \end{smallmatrix}$     |

PCB layout Kat1kGNA

Mounting style: Mounting bracket, PCB clip



Mounting style: Mounting bracket, PCB clip



## ORDER DATA

| SOCKET CONNECTOR |                             |             |
|------------------|-----------------------------|-------------|
| No. of pos.      | Mounting style 4-40 UNC     | Part Number |
| 09               | Mounting bracket / PCB clip | 15-000773   |
| 15               | Mounting bracket / PCB clip | 15-000783   |
| 25               | Mounting bracket / PCB clip | 15-000793   |
| 37               | Mounting bracket / PCB clip | 15-000803   |

| PLUG CONNECTOR |                             |             |
|----------------|-----------------------------|-------------|
| No. of pos.    | Mounting style 4-40 UNC     | Part Number |
| 09             | Mounting bracket / PCB clip | 15-000733   |
| 15             | Mounting bracket / PCB clip | 15-000743   |
| 25             | Mounting bracket / PCB clip | 15-000753   |
| 37             | Mounting bracket / PCB clip | 15-000763   |

PCB clip .122" / 3.1 ± .004" / 0.10 mm hole diameter and .063" / 1.6 mm circuit board thickness