

D-SUB HIGH DENSITY – IP67 SOLID BODY

Solder cup – Precision machined contacts – For wire size AWG 22

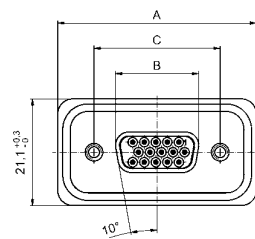


RoHS compliant

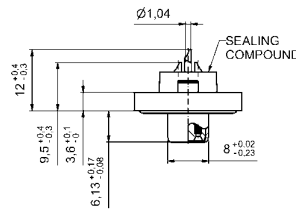
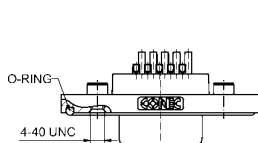
DESCRIPTION

- Suitable for wire size [AWG 22](#)
- Mounting style:
4-40 UNC threaded insert including hex locking bolt
- Quality class 3 (also available in quality class 1)
- One-piece zinc die-cast nickel plated shell
- IP67 for harsh environments, pressure-proof up to 1.45 PSI
- Higher protection on request

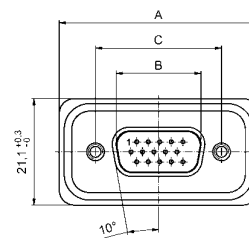
SOCKET CONNECTOR



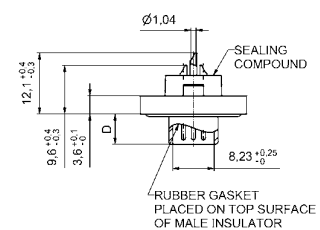
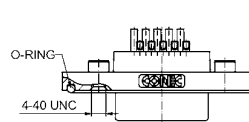
| No. of pos. | A $\begin{smallmatrix} +0.2 \\ -0 \end{smallmatrix}$ | B $\begin{smallmatrix} +0 \\ -0.25 \end{smallmatrix}$ | C |
|-------------|--|---|--|
| 15 | 39.40 | 16.46 | 25.00 $\begin{smallmatrix} +0.12 \\ -0.13 \end{smallmatrix}$ |
| 26 | 47.70 | 24.79 | 33.32 $\begin{smallmatrix} +0.13 \\ -0.12 \end{smallmatrix}$ |
| 44 | 61.40 | 38.50 | 47.04 $\begin{smallmatrix} +0.13 \\ -0.12 \end{smallmatrix}$ |
| 62 | 78.00 | 54.96 | 63.50 $\begin{smallmatrix} +0.13 \\ -0.12 \end{smallmatrix}$ |



PLUG CONNECTOR



| No. of pos. | A $\begin{smallmatrix} +0.2 \\ -0 \end{smallmatrix}$ | B $\begin{smallmatrix} +0 \\ -0.25 \end{smallmatrix}$ | C | D |
|-------------|--|---|--|---|
| 15 | 39.40 | 16.81 | 25.00 $\begin{smallmatrix} +0.12 \\ -0.13 \end{smallmatrix}$ | 6.00 $\begin{smallmatrix} +0.12 \\ -0.18 \end{smallmatrix}$ |
| 26 | 47.70 | 25.14 | 33.32 $\begin{smallmatrix} +0.13 \\ -0.12 \end{smallmatrix}$ | 6.00 $\begin{smallmatrix} +0.12 \\ -0.18 \end{smallmatrix}$ |
| 44 | 61.40 | 38.86 | 47.04 $\begin{smallmatrix} +0.13 \\ -0.12 \end{smallmatrix}$ | 5.99 $\begin{smallmatrix} +0 \\ -0.3 \end{smallmatrix}$ |
| 62 | 78.00 | 55.32 | 63.50 $\begin{smallmatrix} +0.13 \\ -0.12 \end{smallmatrix}$ | 5.99 $\begin{smallmatrix} +0 \\ -0.3 \end{smallmatrix}$ |



ORDER DATA

| SOCKET CONNECTOR | | |
|------------------|-------------------------|-------------|
| No. of pos. | Mounting style 4-40 UNC | Part Number |
| 15 | Threaded insert | 15-000693 |
| 26 | Threaded insert | 15-000703 |
| 44 | Threaded insert | 15-000713 |
| 62 | Threaded insert | 15-000723 |

| PLUG CONNECTOR | | |
|----------------|-------------------------|-------------|
| No. of pos. | Mounting style 4-40 UNC | Part Number |
| 15 | Threaded insert | 15-000653 |
| 26 | Threaded insert | 15-000663 |
| 44 | Threaded insert | 15-000673 |
| 62 | Threaded insert | 15-000683 |