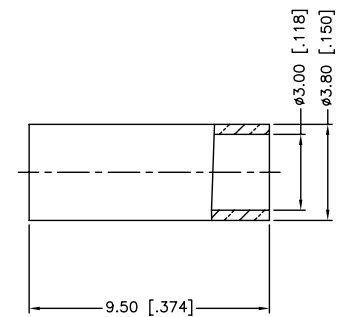
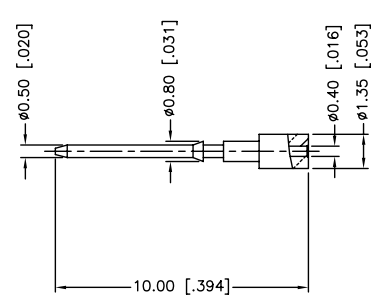
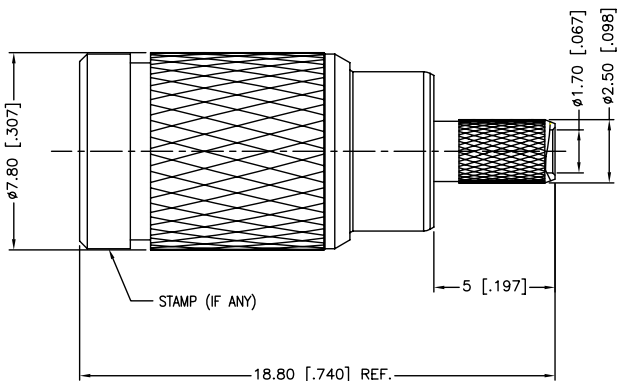


| REV. | DATE | ECR NO. | DESCRIPTION |
|------|----------|---------|--|
| NC | 09/16/03 | XXXXXX | INITIAL RELEASE |
| A | 10/16/07 | XXXXXX | REVISE BODY DIA. (7.8MM) AND FERRULE LENGTH (9.5MM) REVISE CABLE STRIPPING – ADD FOIL REMOVAL |
| B | 07/20/08 | XXXXXX | REVISE OVERALL BODY LENGTH TO 18.80MM |
| C | 04/08/10 | XXXXXX | THE DESIGN WAS CHAGNED |



1. FREQUENCY RANGE: DC – 3 GHz
2. VSWR (RETURN LOSS): 1.15, MAX.
3. CRIMPED FERRULE
HEX CRIMP SIZE .128"
4. CRIMPED CONTACT PIN
HEX CRIMP SIZE .043"

| DESCRIPTION | MATERIAL | FINISH | QTY |
|---------------|-------------|---------|-----|
| 8 FERRULE | COPPER | NICKEL | 1 |
| 7 CONTACT PIN | BRASS | GOLD | 1 |
| 6 BARREL | BRASS | NICKEL | 1 |
| 5 INSULATOR | PTFE | NATURAL | 1 |
| 4 OUT CONTACT | BER. COPPER | GOLD | 1 |
| 3 BODY | BRASS | NICKEL | 1 |
| 2 SPRING | BER. COPPER | NATURAL | 1 |
| 1 SHELL | BRASS | NICKEL | 1 |

UNLESS OTHERWISE SPECIFIED DIMENSIONS ARE IN MILLIMETERS; DIMENSIONS IN [] ARE IN INCHES AND FOR CUSTOMER REFERENCE ONLY.

UNLESS OTHERWISE SPECIFIED TOLERANCES FOR MILLIMETERS ARE:
 0.5 – 8mm ± 0.20mm
 8 – 30mm ± 0.40mm
 30 – 120mm ± 0.50mm

UNLESS OTHERWISE SPECIFIED TOLERANCES FOR INCHES ARE:
 .020 – .315 ± 0.007"
 .315 – 1.180 ± 0.015"
 1.180 – 4.724 ± 0.020"

DO NOT SCALE DRAWING

| APPROVALS | DATE |
|----------------------------------|----------|
| DRAWN M.ZHANG | 04/08/10 |
| CHECKED | |
| ISSUED | |
| SHEET 1 OF 1 | |
| CAD FILE C:/CONNEX/282103-75.DWG | |

Amphenol Connex

**1.0/2.3 PUSH-PULL CRIMP PLUG
(FOR BELDEN 179DT CABLE)**

PART NO. **282103-75**

| | | | |
|------------------------|--------|--------|----------|
| DWG. NO. 282103-75.DWG | REV. C | SIZE A | SCALE NA |
|------------------------|--------|--------|----------|