

- 注) NOTES
1. 材質 MATERIAL
 ハウジング: ガラス入り LCP, 白色, UL94V-0
 HOUSING: G.F.LCP, WHITE, UL94V-0
 ターミナル: 銅合金 (t = 0.2)
 TERMINAL: COPPER ALLOY
 吸着カバー: ステンレス (t = 0.2)
 VACUUM COVER: STAINLESS STEEL
 補強金具: 銅合金 (t = 0.25)
 FITTING NAIL: COPPER ALLOY
 2. マツキ仕様 PLATING
 ターミナル: 接点部 : 金メッキ 0.25 μmMIN.
 TERMINAL: CONTACT AREA: GOLD 0.25 μmMIN.
 半田付け部: 銅メッキ 1 μmMIN.
 SOLDER TAIL AREA: TIN 1 μmMIN.
 下地メッキ: ニッケルメッキ 2 μmMIN.
 UNDER-PLATING: NICKEL 2 μmMIN.
 補助金具: 銅メッキ 1.0 マイクロメートル以上
 FITTING NAIL: OVER PLATING TIN 1.0 MICROMETER MINIMUM
 下地メッキ: ニッケルメッキ 1.0 マイクロメートル以上
 UNDER PLATING NICKEL 1.0 MICROMETER MINIMUM
 3. テールのバラツキ寸法 TAIL COPLANARITY
 テール平坦度は、0.1 MAX.とする。
 TAILS COPLANARITY TO BE 0.1 MAX.
 4. エンボス対応済みの種数については、SD-52901-009を参照下さい。
 FOR THE EMBOSSED PACKAGE PRODUCTS, SEE SD-52901-009.
 5. 本製品は 52901-***2 の鉛フリー品である。
 THIS PRODUCT IS LEAD FREE OF 52901-***2.

| | | | | | | | | | |
|--------|-------|-------|--------|-------|------------|------------|------------|-----|---|
| 無し NO | 48.72 | 47.12 | 43.815 | 52.32 | 52901-1474 | 52901-1475 | 52901-1472 | 140 | ○ |
| | 42.37 | 40.77 | 37.465 | 45.97 | ▲ -1274 | ▲ -1275 | ▲ -1272 | 120 | ○ |
| 有り YES | 36.02 | 34.42 | 31.115 | 39.62 | -1074 | -1075 | -1072 | 100 | ○ |
| | 32.85 | 31.25 | 27.94 | 36.45 | -0974 | -0975 | -0972 | 90 | ○ |
| | 29.67 | 28.07 | 24.765 | 33.27 | -0874 | -0875 | -0872 | 80 | ○ |
| | 26.5 | 24.9 | 21.59 | 30.1 | -0774 | -0775 | -0772 | 70 | ○ |
| | 23.32 | 21.72 | 18.415 | 26.92 | -0674 | -0675 | -0672 | 60 | ○ |
| | 16.97 | 15.37 | 12.065 | 20.57 | -0474 | -0475 | -0472 | 40 | ○ |
| | 13.8 | 12.2 | 8.89 | 17.4 | ▼ -0374 | ▼ -0375 | ▼ -0372 | 30 | ○ |
| | 10.62 | 9.02 | 5.715 | 14.22 | ▼ -0274 | ▼ -0275 | ▼ -0272 | 20 | ○ |

| | | | | | | | |
|--|---------------------------------------|--|----------------------------|---|---|------------------------|------------------------|
| REVISED EC NO: J2008-4376 DRAWN BY: DR. NINOMIYA CHKD: THARYAMA APPR: NIKITA 2008/06/19 2008/06/23 2008/06/23 | GENERAL TOLERANCES (UNLESS SPECIFIED) | | DIMENSION STYLE MM ONLY | | SCALE --- | DESIGN UNITS METRIC | THIRD ANGLE PROJECTION |
| | 10 UNDER | ± 0.2 | DRAWN BY M. NINOMIYA | DATE '04/03/04 | TITLE 0.635 PITCH B-TO-B CONN. REC. HS'G COVER ASS'Y -LEAD FREE- | | |
| | 10 OVER 30 UNDER | ± 0.25 | CHECKED BY K. TOJO | DATE '04/03/04 | APPROVED BY M. SASAO | | |
| | 30 OVER | ± 0.3 | APPROVED BY M. SASAO | | DATE '04/03/04 | MOLEX INCORPORATED | |
| DESCRIPTION | ANGULAR ± 3 ° | DRAFT WHERE APPLICABLE MUST REMAIN WITHIN DIMENSIONS | | MATERIAL NO. SEE TABLE | DOCUMENT NO. SD-52901-008 | SHEET NO. 1 OF 1 | |
| SIZE A3 | | | | THIS DRAWING CONTAINS INFORMATION THAT IS PROPRIETARY TO MOLEX INCORPORATED AND SHOULD NOT BE USED WITHOUT WRITTEN PERMISSION | | | |

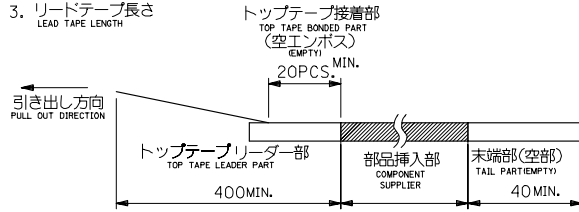
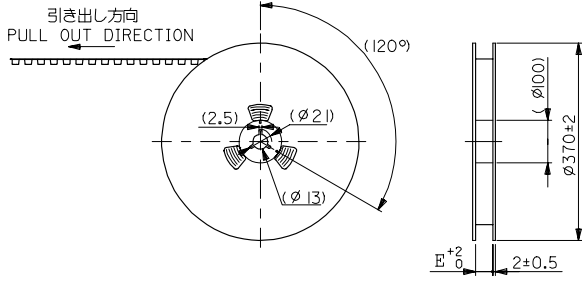
10 9 8 7 6 5 4 3 2 1

注)
NOTES

1. 製品番号 52901-***72 の詳細寸法については、SD-52901-008 を参照下さい。
IN THE PACKAGE, PART NO. 52901-***72 DETAILED DIMENSIONS, SEE SD-52901-008

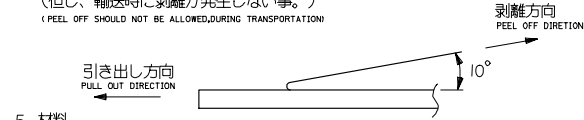
2. 梱包数量 : 440 個/リール
NUMBER OF CONNECTORS : 440 PCS/REEL

3. リードテープ長さ
LEAD TAPE LENGTH



4. トップテープの剥離強度 (剥離方向は下図参照)
PEELING OFF FORCE OF TOP TAPE (PEELING DIRECTION AS SHOWN IN FOLLOWING FIG.)
0.1N~1.3N {10gf~130gf} : キャリアテープ幅2.4mm~7.2mm
CARRIER TAPE WIDTH 2.4mm-7.2mm

尚、本規格値は、出荷時に適用。
THIS REQUIREMENT SHOULD BE APPLIED AT SHIPMENT
(但し、輸送時に剥離が発生しない事。)
(PEEL OFF SHOULD NOT BE ALLOWED, DURING TRANSPORTATION)



5. 材料
MATERIAL
キャリアテープ : ポリプロピレン (PP)
CARRIER TAPE : POLYPROPYLENE (PP)
トップテープ : PET, PE, PEF
TOP TAPE : PET, PE, PEF
リール : 紙
REEL : CARDBOARD

6. 本製品は 52901-***4 の鉛フリー品である。
THIS PRODUCT IS LEAD FREE OF 52901-***4.

52901-***74
MODEL NO.

| | | | | | | | |
|---|--|--|----------------------------|------------------------------|---|------------------------|---------------------------|
| REVISED EC NO. J2006-0585 2005/08/25 DRW:HYAJIMA CHK:DN. UKITA APP:R. NIKITA 2005/08/31 | GENERAL TOLERANCES (UNLESS SPECIFIED) | | DIMENSION STYLE MM ONLY | | SCALE --- | DESIGN UNITS METRIC | THIRD ANGLE PROJECTION |
| | 10 UNDER | ± --- | DRAWN BY M. NINOMIYA | DATE '04/03/04 | TITLE EMBOSSSED TAPE PACKAGE FOR 52901-***72 -LEAD FREE- MOLEX INCORPORATED | | |
| | 10 OVER 30 UNDER | ± --- | CHECKED BY K. TOJO | DATE '04/03/04 | | | |
| | 30 OVER | ± --- | APPROVED BY M. SASAO | DATE '04/03/04 | | | |
| ANGULAR | ± --- ° | MATERIAL NO. SEE CHART | | DOCUMENT NO. SD-52901-009 | SHEET NO. 1 OF 3 | | |
| DRAFT WHERE APPLICABLE MUST REMAIN WITHIN DIMENSIONS | | THIS DRAWING CONTAINS INFORMATION THAT IS PROPRIETARY TO MOLEX INCORPORATED AND SHOULD NOT BE USED WITHOUT WRITTEN PERMISSION | | | | | |

10 9 8 7 6 5 4 3 2 1

F

E

D

C

B

A

F

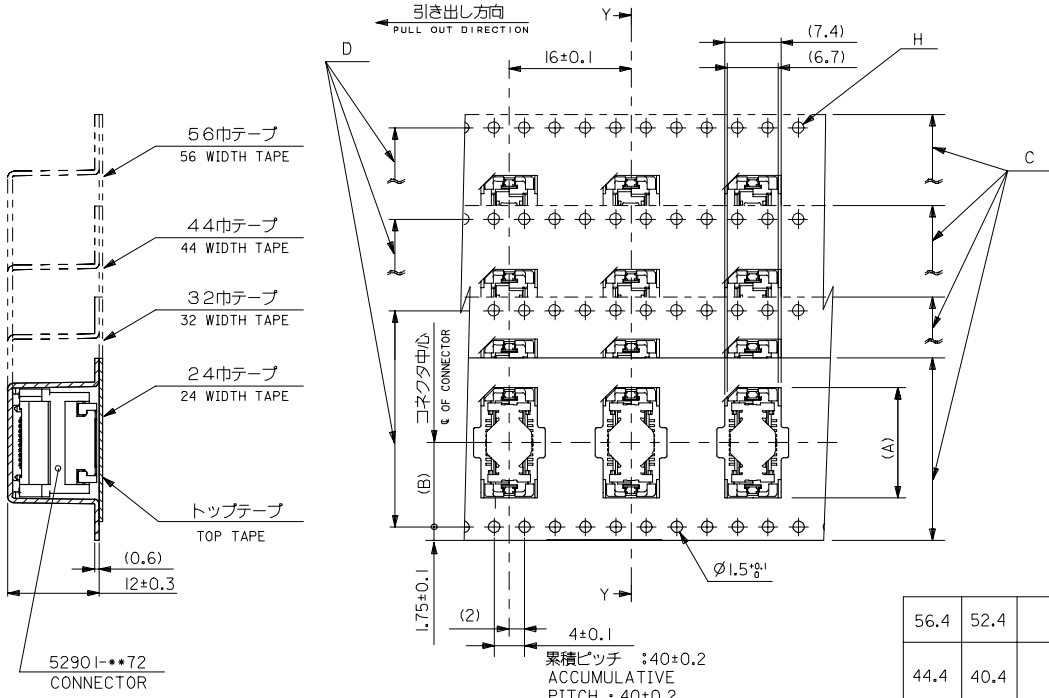
E

D

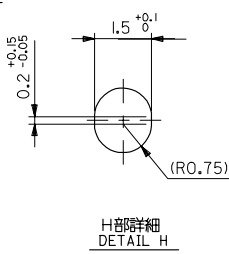
C

B

A



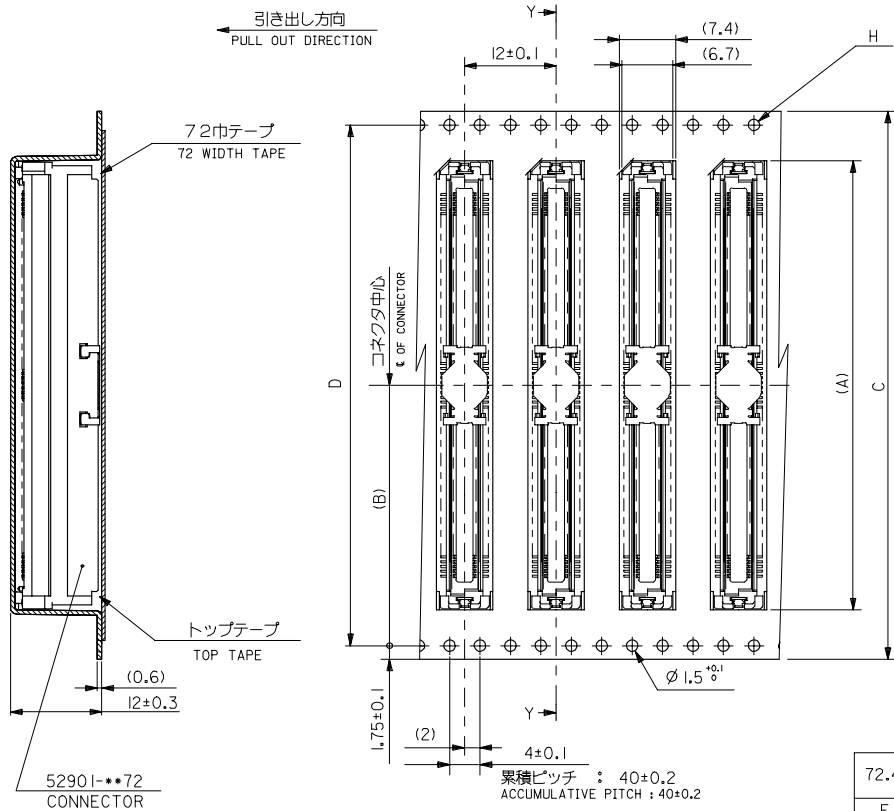
断面 Y-Y
SECTION Y-Y



H部詳細
DETAIL H

| | | | | | | |
|------|------|--------------------|------|------|--------------|---------------|
| 56.4 | 52.4 | 56 ^{+0.3} | 26.2 | 39.9 | 52901-1074 | 100 |
| | | | | 36.8 | -0974 | 90 |
| | | | | 33.6 | -0874 | 80 |
| 44.4 | 40.4 | 44 ^{+0.3} | 20.2 | 30.4 | -0774 | 70 |
| | | | | 27.2 | -0674 | 60 |
| | | | | 20.9 | -0474 | 40 |
| 32.4 | 28.4 | 32 ^{+0.3} | 14.2 | 17.7 | -0374 | 30 |
| | | | | 11.5 | -0274 | 20 |
| 24.4 | | 24 ^{+0.3} | 11.5 | 14.5 | 52901-0274 | 20 |
| E | D | C | B | A | MATERIAL NO. | 部数 PKT.NO. |

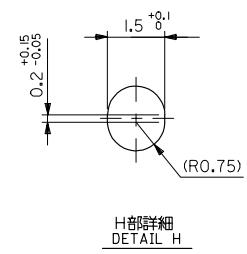
| | | | | | | | |
|---|---------------------------------------|--|----------------------------|---------------------------|---|------------------------|---------------------------|
| REVISED IEC NO: J2006-0585 2005/08/25 DRW:HYAJIMA 2005/08/25 CHK:DN.UKITA 2005/08/31 APPR:NUMITA 2005/08/31 | GENERAL TOLERANCES (UNLESS SPECIFIED) | | DIMENSION STYLE MM ONLY | | SCALE --- | DESIGN UNITS METRIC | THIRD ANGLE PROJECTION |
| | 10 UNDER | ± --- | DRAWN BY M.NINOMIYA | DATE '04/03/04 | TITLE EMBOSSD TAPE PACKAGE FOR 52901-**-72 -LEAD FREE- | | |
| | 10 OVER 30 UNDER | ± --- | CHECKED BY K.TOJO | DATE '04/03/04 | MOLEX INCORPORATED | | |
| | 30 OVER | ± --- | APPROVED BY M.SASAO | DATE '04/03/04 | DOCUMENT NO. SD-52901-009 | | |
| ANGULAR ± --- ° | | DRAFT WHERE APPLICABLE MUST REMAIN WITHIN DIMENSIONS | | MATERIAL NO. SEE CHART | SHEET NO. 2 OF 3 | | |
| THIS DRAWING CONTAINS INFORMATION THAT IS PROPRIETARY TO MOLEX INCORPORATED AND SHOULD NOT BE USED WITHOUT WRITTEN PERMISSION | | | | EN-02JA(021) | | | |



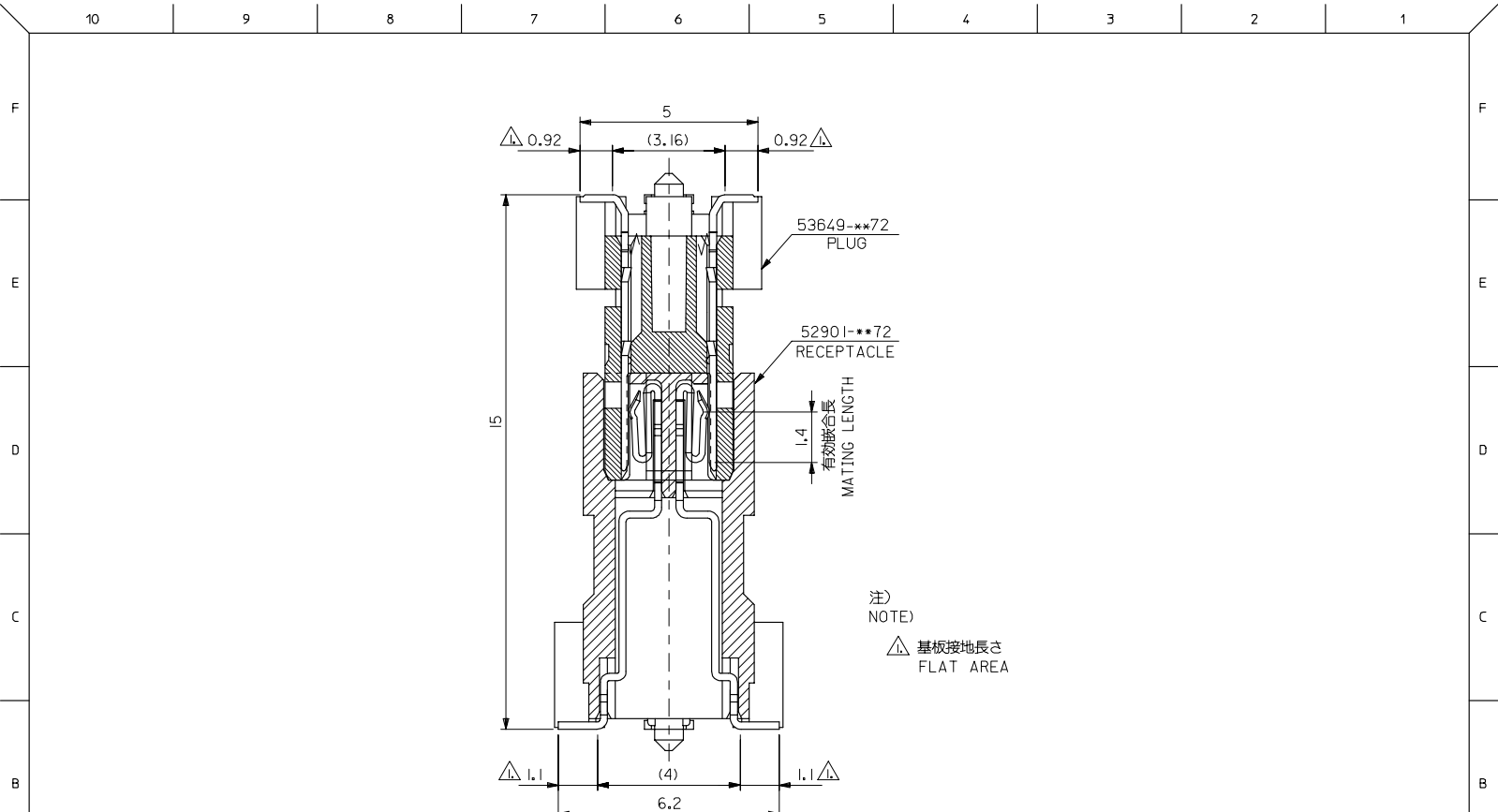
52901-**-72
CONNECTOR

断面 Y-Y
SECTION Y-Y

累積ピッチ : 40±0.2
ACCUMULATIVE PITCH : 40±0.2



| | | | | | | |
|---|------|-------------------|------|---|--------------|---------------------------|
| 72.4 | 68.4 | 72±0.3 | 34.2 | 52.6 | 52901-1474 | 140 |
| E | D | C | B | A | MATERIAL NO. | 種別 CKT.NO. |
| DIMENSION STYLE MM ONLY | | SCALE --- | | DESIGN UNITS METRIC | | THIRD ANGLE PROJECTION |
| DRAWN BY M.NINOMIYA | | DATE '04/03/04 | | TITLE EMBOSSD TAPE PACKAGE FOR 52901-**-72 -LEAD FREE- | | |
| CHECKED BY K.TOJO | | DATE '04/03/04 | | MOLEX INCORPORATED | | |
| APPROVED BY M.SASAO | | DATE '04/03/04 | | DOCUMENT NO. SD-52901-009 | | |
| MATERIAL NO. | | SEE CHART | | SHEET NO. 3 OF 3 | | |
| THIS DRAWING CONTAINS INFORMATION THAT IS PROPRIETARY TO MOLEX INCORPORATED AND SHOULD NOT BE USED WITHOUT WRITTEN PERMISSION | | | | | | |



注) NOTE)
 △ 基板接地長さ
 FLAT AREA

| | | | | | | | |
|---|---------------------------------------|--|-----------------------------|--------------------|---|------------------------|---------------------------|
| RELEASED EC NO. J2005-3798 DRW: KENSUZUKI CHK: CHIKI APPR: NUKITA | GENERAL TOLERANCES (UNLESS SPECIFIED) | | DIMENSION STYLE MM ONLY | | SCALE 10:1 | DESIGN UNITS METRIC | THIRD ANGLE PROJECTION |
| | 10 UNDER | ± 0.2 | DRAWN BY KENSUZUKI | DATE 2005/06/20 | TITLE 0.635 PITCH B TO B CONN. 52901/53649 SERIES MATING CROSS SECTION MOLEX INCORPORATED | | |
| | 10 OVER 30 UNDER | ± 0.25 | CHECKED BY NUKITA | DATE 2005/06/20 | | | |
| | 30 OVER | ± 0.3 | APPROVED BY NUKITA | DATE 2005/06/20 | | | |
| | ANGULAR | ± 3 ° | MATERIAL NO. SEE DRAWING | | DOCUMENT NO. SD-52901-015 | SHEET NO. 1 OF 1 | |
| DRAFT WHERE APPLICABLE MUST REMAIN WITHIN DIMENSIONS | | THIS DRAWING CONTAINS INFORMATION THAT IS PROPRIETARY TO MOLEX INCORPORATED AND SHOULD NOT BE USED WITHOUT WRITTEN PERMISSION | | | | | |