

推奨基板寸法 (参考)  
RECOMMENDED PCB PATTERN LAYOUT (REF.)  
(SCALE 2:1)

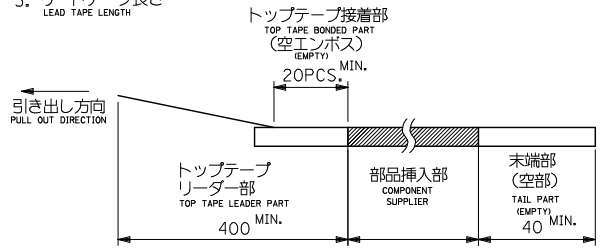
- 注) NOTES
- 材質  
MATERIAL  
ハウジング: ガラス入り LCP, 白色, UL94V-0  
HOUSING: G.F.LCP, WHITE, UL94V-0  
ターミナル: 銅合金 (t = 0.2)  
TERMINAL: COPPER ALLOY  
吸着カバー: ステンレス (t = 0.2)  
VACUUM COVER: STAINLESS STEEL  
補強金具: 銅合金 (t = 0.25)  
FITTING NAIL: COPPER ALLOY
  - メッキ仕様  
PLATING  
ターミナル: 接点部: 金メッキ 0.25 マイクロメートル以上  
CONTACT AREA: GOLD 0.25 MICROMETER MINIMUM  
半田付け部: 鉛メッキ 1.0 マイクロメートル以上  
SOLDER TAIL AREA: TIN 1.0 MICROMETER MINIMUM  
下地メッキ: ニッケルメッキ 1.5 マイクロメートル以上  
UNDER-PLATING: NICKEL 1.5 MICROMETER MINIMUM  
銅メッキ 1.0 マイクロメートル以上  
FITTING NAIL: TIN 1.0 MICROMETER MINIMUM  
下地メッキ: ニッケルメッキ 1.0 マイクロメートル以上  
UNDER-PLATING: NICKEL 1.0 MICROMETER MINIMUM
  - テールのバラツキ寸法  
TAIL COPLANARITY  
240極以下品のテール平坦度は0.1MAX.,  
240極品のテール平坦度は0.12MAX.とする。  
TAILS COPLANARITY TO BE 0.1MAX.  
IN 240 CIRCUITS, TAILS COPLANARITY TO BE 0.12MAX.
  - エンボス対応済み品の種類については、SD-52885-004を参照下さい。  
FOR THE EMBOSSED PACKAGE PRODUCTS, SEE SD-52885-004.

|                       |       |       |        |       |                              |                |            |    |
|-----------------------|-------|-------|--------|-------|------------------------------|----------------|------------|----|
| 無し<br>NO              | 80.47 | 78.87 | 75.565 | 84.07 | 52885-2474                   | 240            |            |    |
|                       | 67.77 | 66.17 | 62.865 | 71.37 | 52885-2074                   | 200            |            |    |
|                       | 55.07 | 53.47 | 50.165 | 58.67 | 52885-1674                   | 160            |            |    |
|                       | 48.72 | 47.12 | 43.815 | 52.32 | 52885-1474                   | 140            |            |    |
|                       | 42.37 | 40.77 | 37.465 | 45.97 | 52885-1274                   | 120            |            |    |
|                       | 36.02 | 34.42 | 31.115 | 39.62 | 52885-1074                   | 100            |            |    |
|                       | 32.85 | 31.25 | 27.94  | 36.45 | ▲                            | -0974          | 90         |    |
|                       | 29.67 | 28.07 | 24.765 | 33.27 |                              | -0874          | 80         |    |
|                       | 26.5  | 24.9  | 21.59  | 30.1  |                              | -0774          | 70         |    |
|                       | 23.32 | 21.72 | 18.415 | 26.92 |                              | -0674          | 60         |    |
| 有り<br>YES             | 20.15 | 18.55 | 15.24  | 23.75 |                              | -0574          | 50         |    |
|                       | 16.97 | 15.37 | 12.065 | 20.57 |                              | -0474          | 40         |    |
|                       | 13.8  | 12.2  | 8.89   | 17.4  |                              | ▼              | -0374      | 30 |
|                       | 10.62 | 9.02  | 5.715  | 14.22 |                              |                | 52885-0274 | 20 |
| ハウジング<br>HSG LOCK     | D     | C     | B      | A     | エンボス梱包<br>EMBOSSED PACKAGING | 極数<br>CKT. NO. |            |    |
| CONNECTORS SERIES No. |       |       |        |       | 52885-***72                  |                |            |    |

|  |  |  |                            |                           |   |                        |                           |
|--|--|--|----------------------------|---------------------------|---|------------------------|---------------------------|
| REVISED<br>EC NO: J2010-2458<br>DRAWN: KAIHO 2010/06/04<br>CHKDK: TOJO 2010/06/10<br>APPR: MSASAO 2010/06/11<br>REV                  | GENERAL TOLERANCES<br>(UNLESS SPECIFIED) |  | DIMENSION STYLE<br>MM ONLY |                           | SCALE<br>---  | DESIGN UNITS<br>METRIC | THIRD ANGLE<br>PROJECTION |
|  | 10 UNDER                                 | ± 0.2  | DRAWN BY<br>M. NAGATA      | DATE<br>2004/02/25        | TITLE<br>0.635 PITCH B TO B<br>S/T REC. HSG ASSY<br>-LEAD FREE- |                        |                           |
|  | 10 OVER 30 UNDER                         | ± 0.25   | CHECKED BY<br>K. TOJO      | DATE<br>2004/02/25        | MOLEX INCORPORATED  |                        |                           |
|  | 30 OVER                                  | ± 0.3  | APPROVED BY<br>M. SASAO    | DATE<br>2004/02/25        | DOCUMENT NO.<br>SD-52885-003                                    |                        |                           |
| ANGULAR ± 3 °  |  | DRAFT WHERE APPLICABLE<br>MUST REMAIN<br>WITHIN DIMENSIONS |                            | MATERIAL NO.<br>SEE CHART |   | SHEET NO.<br>1 OF 1    |                           |
| SIZE A THIS DRAWING CONTAINS INFORMATION THAT IS PROPRIETARY TO MOLEX INCORPORATED AND SHOULD NOT BE USED WITHOUT WRITTEN PERMISSION |  |  |                            |                           |   |                        |                           |

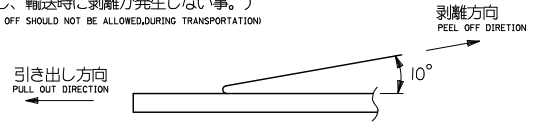
注)  
NOTES

1. 製品番号 52885-\*\*\*72 の詳細寸法については SD-52885-003 を参照下さい。  
IN THE PACKAGE, PART NO. 52885-\*\*\*72 DETAILED DIMENSIONS, SEE SD-52885-003
2. 梱包数量 : 1000個/リール  
NUMBER OF CONNECTORS : 1000 PCS/REEL
3. リードテープ長さ  
LEAD TAPE LENGTH



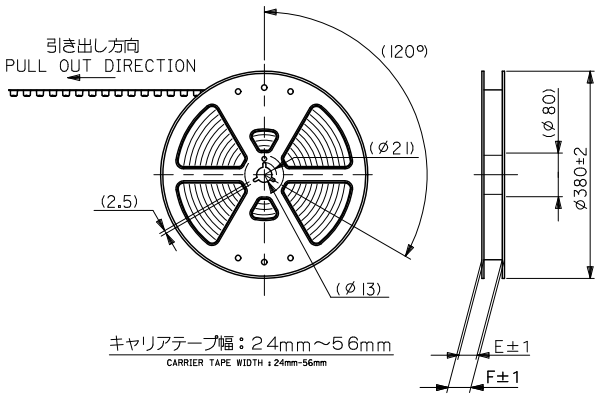
4. トップテープの剥離強度 (剥離方向は下図参照)  
PEELING OFF FORCE OF TOP TAPE (PEELING DIRECTION AS SHOWN IN FOLLOWING FIG.)  
0.1~0.3N {10~130gf}

尚、本規格値は、出荷時に適用。  
THIS REQUIREMENT SHOULD BE APPLIED AT SHIPMENT  
(但し、輸送時に剥離が発生しない事。)  
(PEEL OFF SHOULD NOT BE ALLOWED DURING TRANSPORTATION)

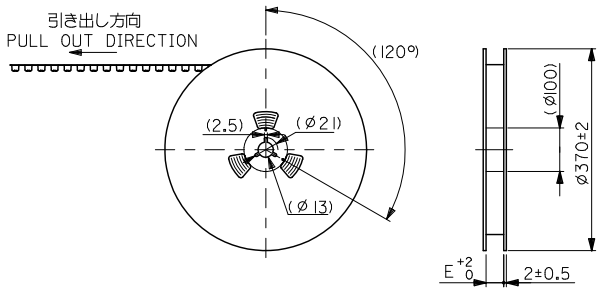


5. 材料

MATERIAL  
 キャリアテープ : ポリプロピレン (PP)  
 CARRIER TAPE : POLYPROPYLENE (PP)  
 トップテープ : PET, PE, PEF  
 TOP TAPE : PET, PE, PEF  
 リール : キャリアテープ幅 24mm~56mm : ポリスチレン  
 REEL : CARRIER TAPE WIDTH 24mm-56mm : POLYSTYRENE  
 キャリアテープ幅 72mm~104mm : 紙  
 CARRIER TAPE WIDTH 72mm-104mm : CARD BOARD



キャリアテープ幅 : 24mm~56mm  
CARRIER TAPE WIDTH : 24mm-56mm



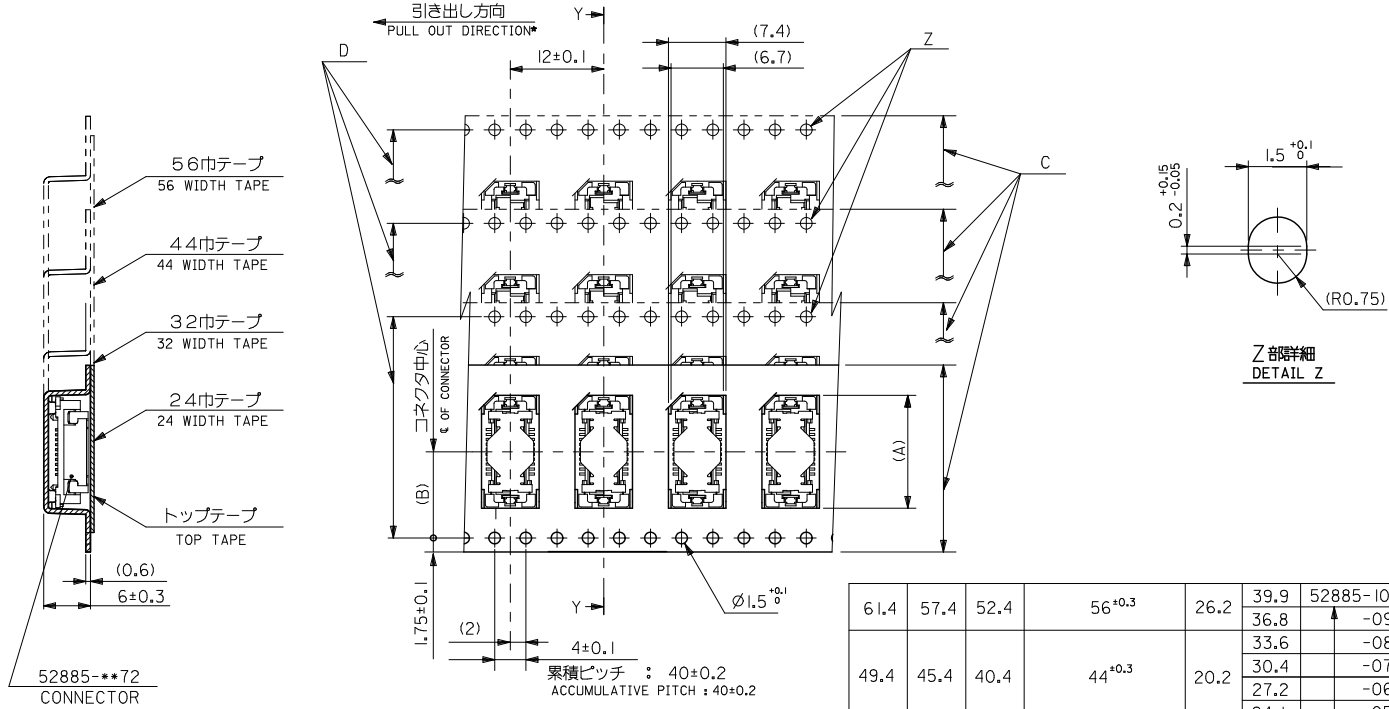
キャリアテープ幅 : 72mm~104mm  
CARRIER TAPE WIDTH : 72mm-104mm

|                      |              |                        |  |
|----------------------|--------------|------------------------|--|
| CONNECTOR SERIES No. |              | 52885-***72            |  |
| SCALE                | DESIGN UNITS | THIRD ANGLE PROJECTION |  |
| ---                  | METRIC       |                        |  |

|   |  |        |                            |            |
|---|--|--------|----------------------------|------------|
| REVISED<br>EC NO: J2010-2458<br>DRAWN: KAIHO<br>CHKD: TOJO<br>APPR: MSASAO<br>REV | GENERAL TOLERANCES (UNLESS SPECIFIED)                      |        | DIMENSION STYLE<br>MM ONLY |            |
|   | 10 UNDER   | ±---   | DRAWN BY                   | DATE       |
|   | 10 OVER 30 UNDER   | ±---   | M. NAGATA                  | 2004/02/25 |
|   | 30 OVER  | ±---   | CHECKED BY                 | DATE       |
|   | ANGULAR  | ±--- ° | K. TOJO                    | 2004/02/25 |
|   | DRAFT WHERE APPLICABLE<br>MUST REMAIN<br>WITHIN DIMENSIONS |        | APPROVED BY                | DATE       |
|   |  |        | M. SASAO                   | 2004/02/25 |
|   |  |        | MATERIAL NO.<br>SEE TABLE  |            |

|                    |  |  |  |
|--------------------|--|--|--|
| TITLE              |  | 52885-***72<br>TAPING PACKAGE<br>-LEAD FREE- |  |
| MOLEX INCORPORATED |  | DOCUMENT NO.                                 |  |
| SD-52885-004       |  | SHEET NO.<br>1 OF 3                          |  |

10 9 8 7 6 5 4 3 2 1

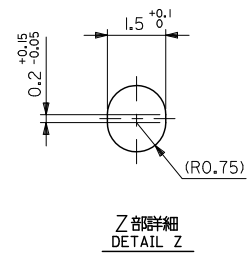
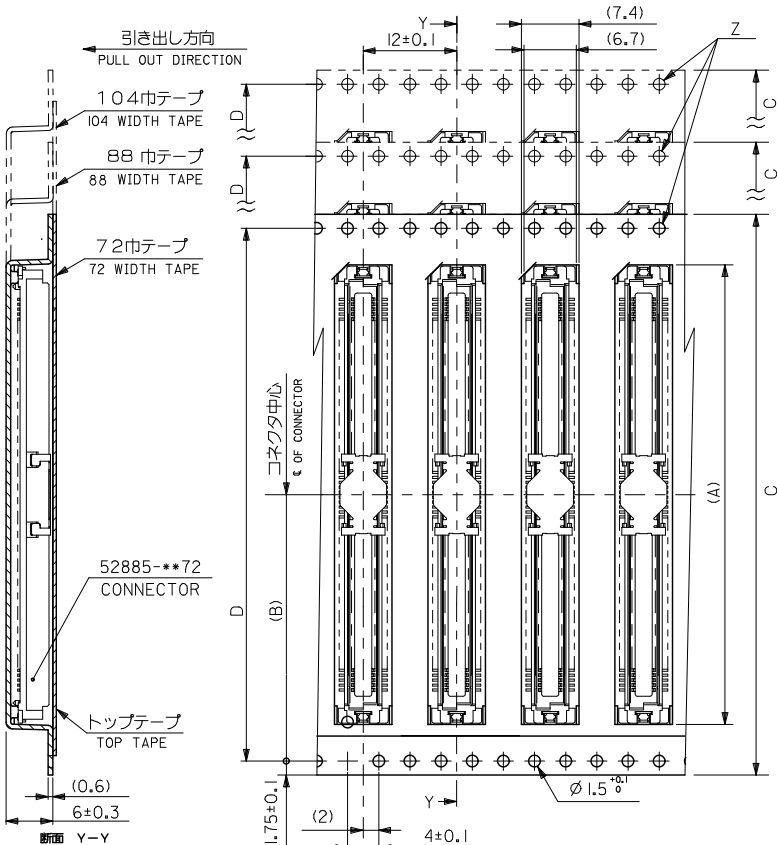


断面 Y-Y  
SECTION Y-Y

|      |      |      |                    |                                |      |            |                            |
|------|------|------|--------------------|--------------------------------|------|------------|----------------------------|
| 61.4 | 57.4 | 52.4 | 56 <sup>+0.3</sup> | 26.2                           | 39.9 | 52885-1074 | 100                        |
|      |      |      |                    |                                | 36.8 | -0974      | 90                         |
|      |      |      |                    |                                | 33.6 | -0874      | 80                         |
| 49.4 | 45.4 | 40.4 | 44 <sup>+0.3</sup> | 20.2                           | 30.4 | -0774      | 70                         |
|      |      |      |                    |                                | 27.2 | -0674      | 60                         |
|      |      |      |                    |                                | 24.1 | -0574      | 50                         |
| 37.4 | 33.4 | 28.4 | 32 <sup>+0.3</sup> | 14.2                           | 20.9 | -0474      | 40                         |
|      |      |      |                    |                                | 17.7 | -0374      | 30                         |
| 29.4 | 25.4 | —    | 24 <sup>+0.3</sup> | 11.5                           | 14.5 | 52885-0274 | 20                         |
| F    | E    | D    | C                  | キャリアテープ幅<br>CARRIER TAPE WIDTH | (B)  | (A)        | MATERIAL NO. 種別<br>CKT.No. |

|   |                                       |  |                            |  |  |                        |                        |
|---|---------------------------------------|--|----------------------------|--|--|------------------------|------------------------|
| REVISED<br>EC NO: J2010-2458<br>DRW: KAIHO 2010/06/04<br>CHK: K. TOJO 2010/06/10<br>APPR: M. SASAO 2010/06/11 | GENERAL TOLERANCES (UNLESS SPECIFIED) |  | DIMENSION STYLE<br>MM ONLY |  | SCALE<br>---   | DESIGN UNITS<br>METRIC | THIRD ANGLE PROJECTION |
|   | 10 UNDER                              | ±---   | DRAWN BY<br>M. NAGATA      | DATE<br>2004/02/25   | TITLE<br>52885-**72<br>TAPING PACKAGE<br>-LEAD FREE- |                        |                        |
|   | 10 OVER 30 UNDER                      | ±---   | CHECKED BY<br>K. TOJO      | DATE<br>2004/02/25   | MOLEX INCORPORATED                                   |                        |                        |
|   | 30 OVER                               | ±---   | APPROVED BY<br>M. SASAO    | DATE<br>2004/02/25   | DOCUMENT NO.<br>SD-52885-004                         | SHEET NO.<br>2 OF 3    |                        |
| DESCRIPTION   | ANGULAR ±--- °                        | DRAFT WHERE APPLICABLE<br>MUST REMAIN<br>WITHIN DIMENSIONS |                            | THIS DRAWING CONTAINS INFORMATION THAT IS PROPRIETARY TO MOLEX<br>INCORPORATED AND SHOULD NOT BE USED WITHOUT WRITTEN PERMISSION |  |                        |                        |

10 9 8 7 6 5 4 3 2 1



|       |       |                     |                                |      |            |                             |
|-------|-------|---------------------|--------------------------------|------|------------|-----------------------------|
| 104.4 | 100.4 | 104 <sup>+0.3</sup> | 50.2                           | 84.4 | 52885-2474 | 240                         |
| 88.4  | 84.4  | 88 <sup>+0.3</sup>  | 42.2                           | 71.7 | 52885-2074 | 200                         |
| 72.4  | 68.4  | 72 <sup>+0.3</sup>  | 34.2                           | 59.0 | 52885-1674 | 160                         |
|       |       |                     |                                | 46.3 | 52885-1274 | 120                         |
| E     | D     | C                   | キャリアテープ幅<br>CARRIER TAPE WIDTH | (B)  | (A)        | MATERIAL NO. 種別<br>CRT. NO. |

累積ピッチ : 40±0.2  
ACCUMULATIVE PITCH : 40±0.2

|  |                                       |      |   |            |                    |  |
|--|---------------------------------------|------|---|------------|--------------------|--|
| REVISED<br>EC NO: J2010-2458<br>DRAWN: KAIHO 2010/06/04<br>CHECKED: TOJO 2010/06/10<br>APPROVED: SASAO 2010/06/11<br>(REV) DESCRIPTION | GENERAL TOLERANCES (UNLESS SPECIFIED) |      | DIMENSION STYLE   | SCALE      | DESIGN UNITS       | THIRD ANGLE PROJECTION                       |
|  |                                       |      | MM ONLY   | ---        | METRIC             |  |
|  | 10 UNDER                              | ±--- |   | DRAWN BY   | DATE               | TITLE  |
|  | 10 OVER 30 UNDER                      | ±--- |   | M. NAGATA  | 2004/02/25         | 52885-***72<br>TAPING PACKAGE<br>-LEAD FREE- |
| 30 OVER  | ±---                                  |      | K. TOJO   | 2004/02/25 |                    |  |
| ANGULAR ±--- °   |                                       |      | APPROVED BY   | DATE       | MOLEX INCORPORATED |  |
| DRAFT WHERE APPLICABLE MUST REMAIN WITHIN DIMENSIONS   |                                       |      | M. SASAO  | 2004/02/25 |                    |  |
|  |                                       |      | MATERIAL NO.  | SEE TABLE  | DOCUMENT NO.       | SHEET NO.                                    |
|  |                                       |      |   |            | SD-52885-004       | 3 OF 3                                       |
|  |                                       |      | THIS DRAWING CONTAINS INFORMATION THAT IS PROPRIETARY TO MOLEX INCORPORATED AND SHOULD NOT BE USED WITHOUT WRITTEN PERMISSION |            |                    |  |