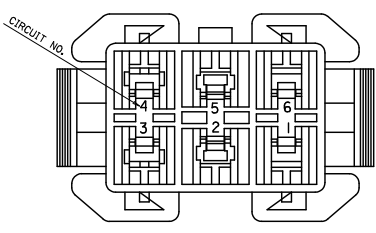
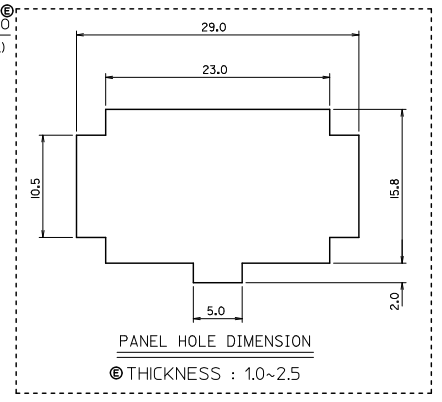
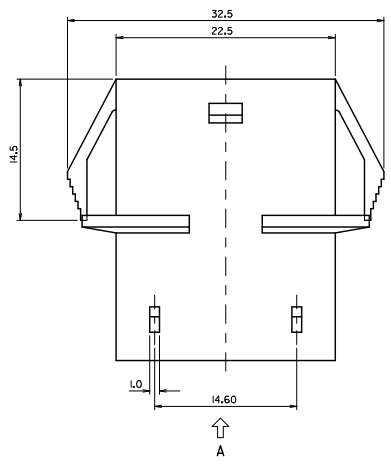
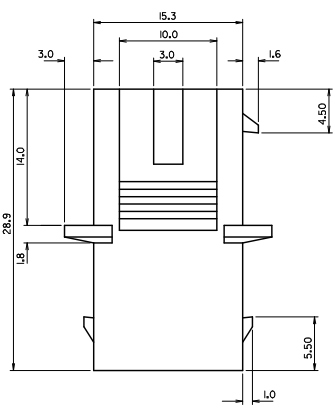
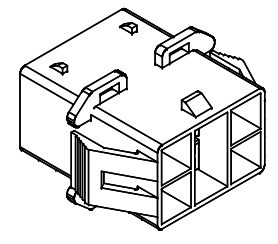
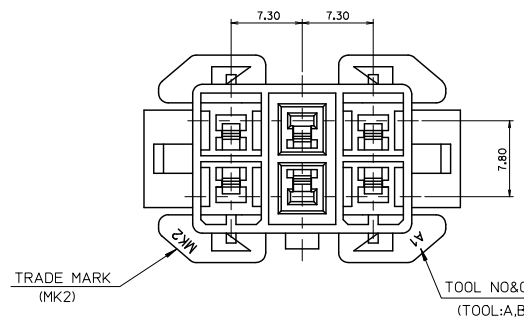


10 9 8 7 6 5 4 3 2 1



VIEW 'A'



- NOTES.
1. MATERIAL & COLOR : SEE TABLE
  2. MATED HOUSING : 35151-061\*/#619
  3. APPLICABLE TERMINAL : 35745-\*\*\*\*\* (3,4 CKT)  
35746-\*\*\*\*\* (2,5 CKT)  
35747-\*\*\*\*\* (1,6 CKT)
  4. APPLICABLE T.P.A : 35150-039\*
  5. PRODUCT SPECIFICATION : PS-35150-003

NO	PRODUCT	MATERIAL	
	PART NO	COLOR	DESCRIPTION
1	35150-0610	NATURAL	POLYESTER (PBT) (UL94V-0)
2	35150-0612	RED	
3	35150-0614	BLUE	
4	35150-0619	NATURAL	PC/PET (UL94V-0)
5	35150-2619	RED	
6	35150-3619	YELLOW	
7	35150-4619	BLUE	

REVISED IEC NO: KOR2010-0092 DRAWN: HPARK01 2010/01/14 CHECKED: YANG 2010/01/14 APPR: YUNSIKKIM 2010/01/14 REV DESCRIPTION	QUALITY SYMBOLS ▽=0 ▽=0	GENERAL TOLERANCES (UNLESS SPECIFIED) mm INCH 4 PLACES ± --- ± --- 3 PLACES ± --- ± --- 2 PLACES ± 0.3 ± --- 1 PLACE ± 0.3 ± --- ANGULAR ± 3°	DIMENSION STYLE MM ONLY DRAWN BY: WY.YANG DATE: 1992/09/14 CHECKED BY: BK.CH01 DATE: 1992/09/14 APPROVED BY: DATE:	SCALE: 1:1 DESIGN UNITS: METRIC THIRD ANGLE PROJECTION	TITLE: 7.3 PITCH W/W MALE HOUSING-6P	
	DRAFT WHERE APPLICABLE MUST REMAIN WITHIN DIMENSIONS	MATERIAL NO. SEE TABLE DOCUMENT NO. SD-35150-061* SHEET NO. 1 OF 01	MOLEX INCORPORATED			
	THIS DRAWING CONTAINS INFORMATION THAT IS PROPRIETARY TO MOLEX INCORPORATED AND SHOULD NOT BE USED WITHOUT WRITTEN PERMISSION					
	SIZE A3					

9 8 7 6 5 4 3 2 1