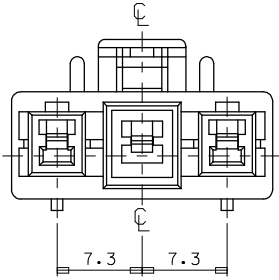
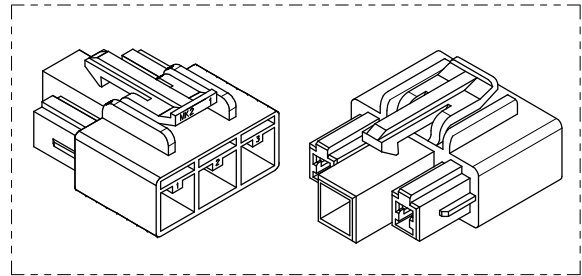
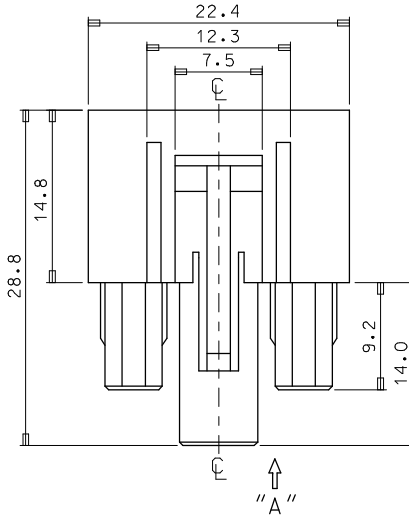
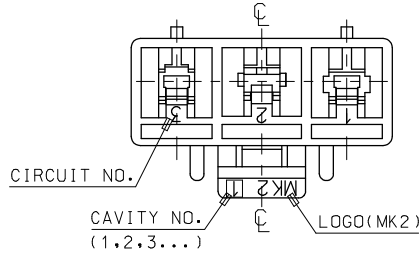
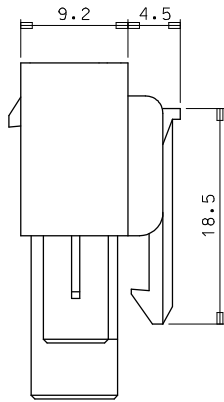


10 9 8 7 6 5 4 3 2 1



VIEW "A"



- NOTES
1. MATERIAL . COLOR : SEE TABLE
 2. MATED HOUSING : 35150-*30*
35150-*31*
35150-039*(T.P.A)
 3. APPLICABLE TERMINAL : 35746-0*10 (1 CIRCUIT)
35745-0*10 (2 CIRCUIT)
35748-0*10 (3 CIRCUIT)

FINISH	DESCRIPTION	ORDER NO	MATERIAL NO	NO
BLUE COLOR	PET/PC (UL94V-0)	35151-4319	351514319	6
YELLOW COLOR		35151-3319	351513319	5
RED COLOR	PBT (UL94V-0)	35151-2319	351512319	4
NATURAL COLOR		35151-0319	351510319	3
BLUE COLOR		35151-0314	351510314	2
NATURAL COLOR		35151-0310	351510310	1
MATERIAL		PRODUCT		

[TABLE]

REVISED EC NO: KOR2009-0014 DRAWN: JHPARK01 2008/08/19 CHKDWY: YANG 2008/08/19 APPR: YUNS.HK.HM 2008/08/19 DESCRIPTION	QUALITY SYMBOLS	GENERAL TOLERANCES (UNLESS SPECIFIED) mm INCH 4 PLACES ± --- ± --- 3 PLACES ± --- ± --- 2 PLACES ± --- ± --- 1 PLACE ± 0.3 ± --- ANGULAR ± 1 °	DIMENSION STYLE	SCALE	DESIGN UNITS	THIRD ANGLE PROJECTION	
			MM ONLY	3:1	METRIC		
				DRAWN BY	DATE	TITLE	
				JS KANG		7.3 PITCH W/W CONN FEMALE HSG-3P	
		CHECKED BY	DATE				
		APPROVED BY	DATE				
				MATERIAL NO.	DOCUMENT NO.	SHEET NO.	
				SEE TABLE	SD-35151-031*	1 OF 01	
				DRAFT WHERE APPLICABLE MUST REMAIN WITHIN DIMENSIONS			
				THIS DRAWING CONTAINS INFORMATION THAT IS PROPRIETARY TO MOLEX INCORPORATED AND SHOULD NOT BE USED WITHOUT WRITTEN PERMISSION			

9 8 7 6 5 4 3 2 1