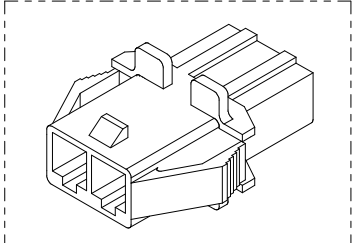
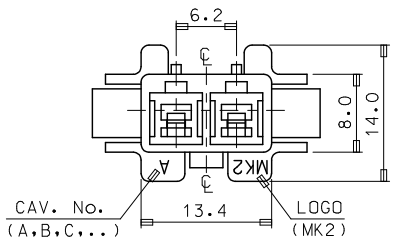
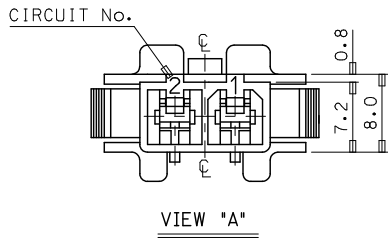
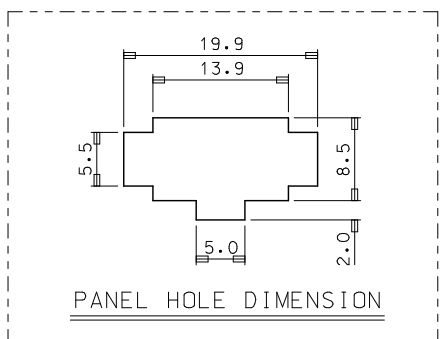
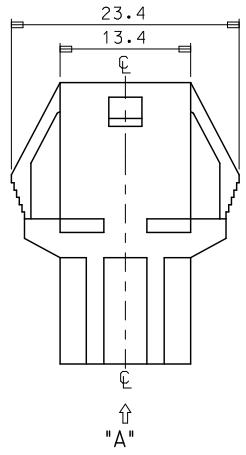
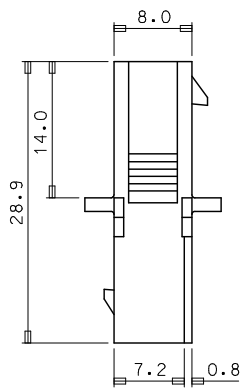


10 9 8 7 6 5 4 3 2 1



- NOTES
1. MATERIAL & COLOR : SEE TABLE
 2. MATCHED HOUSING : 35151-021*
 3. APPLIED TERMINAL : 35745-0*10



NO	PRODUCT		MATERIAL	
	PART NO	MATERIAL NO	COLOR	DESCRIPTION
1	35150-0210	351500210	NATURAL	PBT (UL94V-0)
2	35150-0212	351500212	RED	
3	35150-0214	351500214	BLUE	
4	35150-0219	351500219	NATURAL	
5	35150-2219	351502219	RED	PC/PET (UL94V-0)
6	35150-3219	351503219	YELLOW	
7	35150-4219	351504219	BLUE	

REVISED
 EEC NO: KOR2009-0026
 DRWN: HPARK01 2008/09/25
 CHK: KY YANG 2008/11/25
 APPR: YUNSIKKIM 2008/11/25

QUALITY SYMBOLS	GENERAL TOLERANCES (UNLESS SPECIFIED)	
	mm	INCH
▽=0	4 PLACES ± ---	± ---
▽=0	3 PLACES ± ---	± ---
	2 PLACES ± ---	± ---
	1 PLACE ± 0.2	± ---
	ANGULAR ± 1°	

DRAFT WHERE APPLICABLE MUST REMAIN WITHIN DIMENSIONS

DIMENSION STYLE	SCALE	DESIGN UNITS	THIRD ANGLE PROJECTION
MM ONLY	2:1	METRIC	
DRAWN BY JS. KANG		TITLE 6.2 PITCH W/W CONN MALE HSG-2P(W/EAR)	
CHECKED BY		DATE	
APPROVED BY		DATE	
MATERIAL NO. SEE TABLE		MOLEX INCORPORATED	
SIZE A3		DOCUMENT NO. SD-35150-0210	SHEET NO. 1 OF 01

THIS DRAWING CONTAINS INFORMATION THAT IS PROPRIETARY TO MOLEX INCORPORATED AND SHOULD NOT BE USED WITHOUT WRITTEN PERMISSION

ib_frame_A3_P_ME_T
 Rev. E 2006/04/15

9 8 7 6 5 4 3 2 1