

10 9 8 7 6 5 4 3 2 1

F

E

D

C

B

A

F

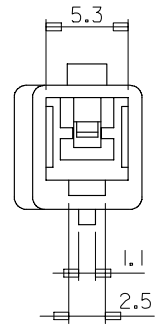
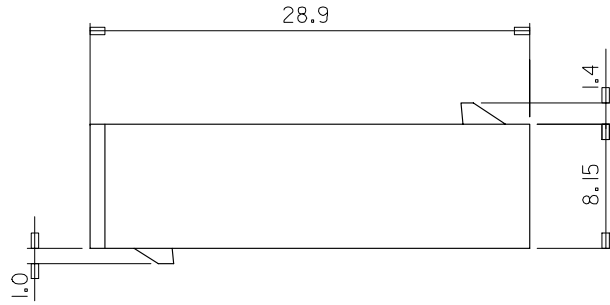
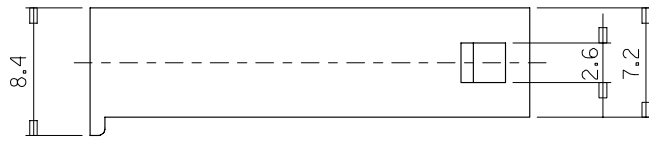
E

D

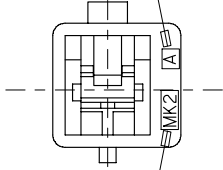
C

B

A



CAV.NO.(A,B..)



TRADE MARK
(MK2)

NOTES

1. MATERIAL & COLOR : SEE TABLE
2. MATING HOUSING: 35151-0110
3. APPLICABLE TERMINAL: 35745-0*10
4. APPLICABLE TPA: 35182-019*

NO	PRODUCT		MATERIAL	
	PART NO	MATERIAL NO	COLOR	DESCRIPTION
1	35150-0100	351500100	NATURAL	PBT
2	35150-0102	351500102	RED	(UL94V-0)
3	35150-0104	351500104	BLUE	
4	35150-0109	351500109	NATURAL	PBT/PC

REVISED
EC NO: KOR2008-0048
DRAWN: JHPARK01 2007/09/10
CHKD: WYANG 2007/09/10
APPR: TUNSIKIM 2007/09/10

QUALITY SYMBOLS
▽=0
▽=0

GENERAL TOLERANCES (UNLESS SPECIFIED)

	mm	INCH
4 PLACES	± .005	± .0002
3 PLACES	± .008	± .0003
2 PLACES	± .015	± .0006
1 PLACE	± 0.3	± .0118
ANGULAR ± 1 °		

DRAFT WHERE APPLICABLE MUST REMAIN WITHIN DIMENSIONS

DIMENSION STYLE
MM ONLY

DRAWN BY	DATE
WY. YANG	
CHECKED BY	DATE
BK. CHOI	
APPROVED BY	DATE
CW. LEE	

MATERIAL NO. SEE TABLE

SCALE 4:1
DESIGN UNITS METRIC
THIRD ANGLE PROJECTION

TITLE
.070 W/W RECEPTACLE HSG-1P

MOLEX INCORPORATED
DOCUMENT NO. SD-35150-0100
SHEET NO. 1 OF 01

THIS DRAWING CONTAINS INFORMATION THAT IS PROPRIETARY TO MOLEX INCORPORATED AND SHOULD NOT BE USED WITHOUT WRITTEN PERMISSION