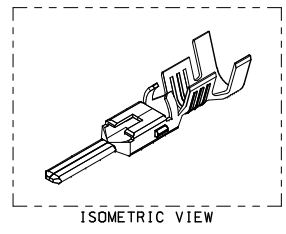
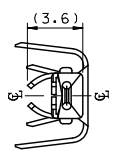
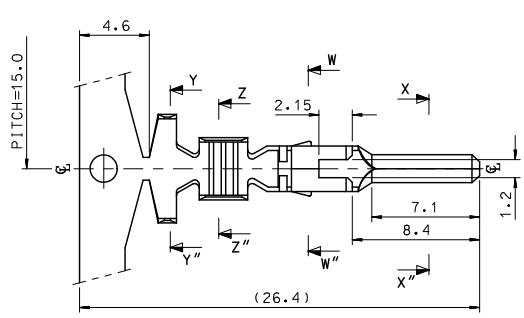
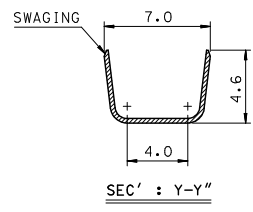
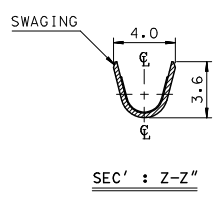
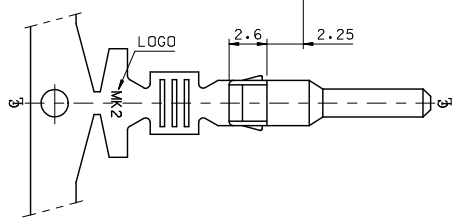
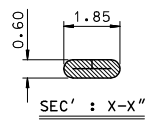
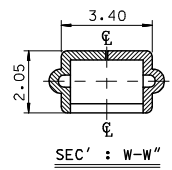
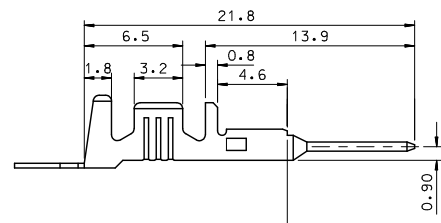


10 9 8 7 6 5 4 3 2 1



- NOTES.
1. MATERIAL : ⓄBRASS, PRE-TIN PLATED
  2. FINISH : 0.8~1.8μm,Tin(Sn) plating overall  
0.3~0.8μm.Copper(Cu) plating
  3. PRODUCT SPECIFICATION : PS-35150-001, PS-35180-002  
PS-35180-003, PS-35182-003, PS-35524-001
  4. CRIMPING SPECIFICAITON : CS-35745-001
  5. RECOMMENDED LENGTH OF WIRE STRIP IS 4.0~4.8mm
  6. APPLICABLE WIRE SIZE : AWG #20+#20  
AWG #20+#18  
AWG #18+#18



REVISED EC NO: KOR2009-0151 D DRAWN: JHPARK01 2009/05/18 CHKDWY. YANG 2009/06/18 APPR: TONSTK11H 2009/07/01	QUALITY SYMBOLS ▽=0 ▽=0	GENERAL TOLERANCES (UNLESS SPECIFIED)		DIMENSION STYLE MM ONLY		SCALE 4:1	DESIGN UNITS METRIC	THIRD ANGLE PROJECTION	
		4 PLACES ± --- ± ---	mm INCH	DRAWN BY JS.KANG	DATE 1998/01/19	TITLE .070 MALE TERMINAL-A (LARGE)			
		3 PLACES ± --- ± ---		CHECKED BY BK.CHOI	DATE 1998/01/19	MOLEX INCORPORATED			
		2 PLACES ± 0.2 ± ---		APPROVED BY CW.LEE	DATE 1998/01/19	MATERIAL NO. 357450310		DOCUMENT NO. SD-35745-002	SHEET NO. 1 OF 01
1 PLACE ± 0.3 ± ---		ANGULAR ± 1°		DRAFT WHERE APPLICABLE MUST REMAIN WITHIN DIMENSIONS					
THIS DRAWING CONTAINS INFORMATION THAT IS PROPRIETARY TO MOLEX INCORPORATED AND SHOULD NOT BE USED WITHOUT WRITTEN PERMISSION									