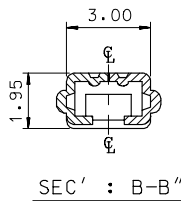
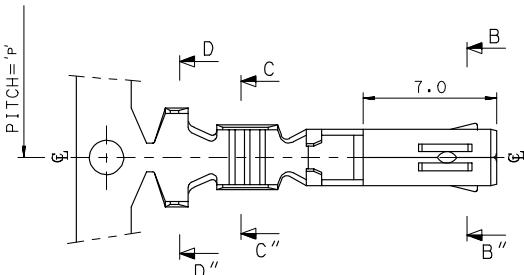
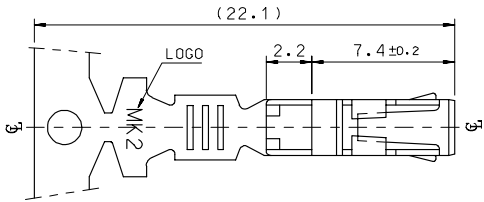
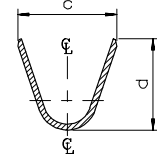
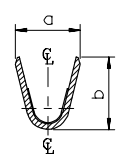
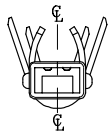
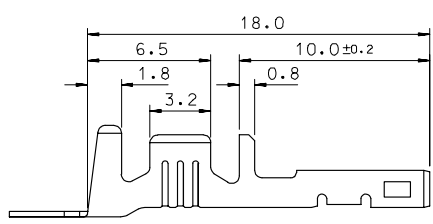
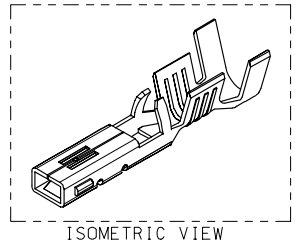


10 9 8 7 6 5 4 3 2 1



- NOTES
1. MATERIAL : PHOSPHOR BRONZE
0.3mm THICKNESS
 2. FINISH : PRE-PLATED TIN
 3. RECOMMENDED LENGTH OF WIRE STRIP IS 4.0-4.8mm.



| MATERIAL NO | ENG. No. | AWG | a | b | c | d | PITCH P |
|-------------|------------|---------|------|------|------|-----|---------|
| 357460210 | 35746-0210 | #18-#14 | 3.4 | 3.8 | 5.2 | 4.8 | 12.0 |
| 357460110 | 35746-0110 | #22-#20 | 2.85 | 2.8 | 4.2 | 4.0 | 10.6 |
| 357460410 | 35746-0410 | #24 | 2.2 | 1.75 | 3.85 | 3.5 | 10.6 |

| | | | | | | |
|--|-----------------|--|-----------------|---|--------------|--|
| REVISED EC NO: KOR2008-0087 TIDRAWN: JHPARK01 2007/11/15 CHIKWANG YANG 2007/11/15 APPR: TUNSIKIM 2007/11/15 DESCRIPTION | QUALITY SYMBOLS | GENERAL TOLERANCES (UNLESS SPECIFIED) | DIMENSION STYLE | SCALE | DESIGN UNITS | THIRD ANGLE PROJECTION |
| | ▽=0 ▽=0 | mm INCH 4 PLACES ± --- ± --- 3 PLACES ± --- ± --- 2 PLACES ± 0.3 ± --- 1 PLACE ± 0.3 ± --- ANGULAR ± 1 ° | MM ONLY | 4:1 | METRIC | DRAWN BY BK.CHOI DATE 1992/11/17 CHECKED BY BK.CHOI DATE 1992/11/17 APPROVED BY CW.LEE DATE 1992/11/17 |
| DRAFT WHERE APPLICABLE MUST REMAIN WITHIN DIMENSIONS | | SEE TABLE | | TITLE .070 FEMALE TERMINAL (A-TYPE) MOLEX INCORPORATED | | MATERIAL NO. SD-35746-001 DOCUMENT NO. 1 OF 01 |
| THIS DRAWING CONTAINS INFORMATION THAT IS PROPRIETARY TO MOLEX INCORPORATED AND SHOULD NOT BE USED WITHOUT WRITTEN PERMISSION | | | | | | |

9 8 7 6 5 4 3 2 1