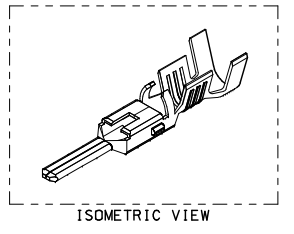
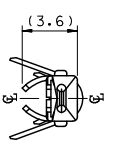
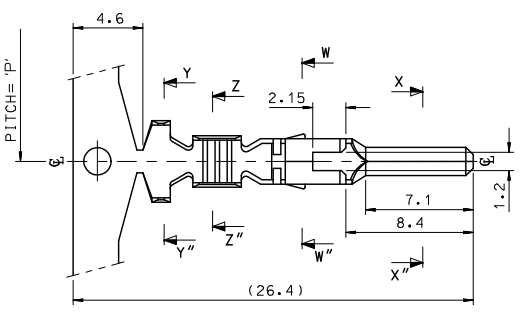
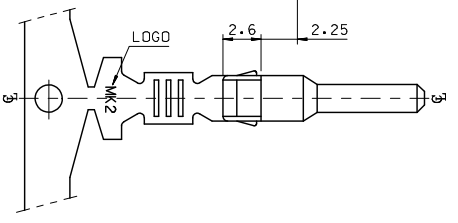
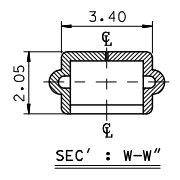
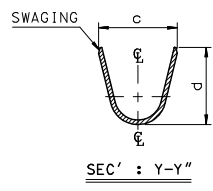
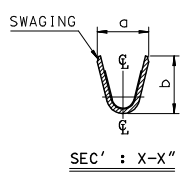
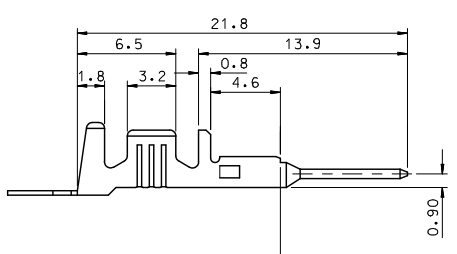
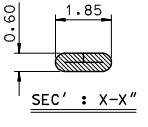


10 9 8 7 6 5 4 3 2 1



- NOTES.
1. MATERIAL :  $\text{Ⓢ}$ BRASS, PRE-TIN PLATED
  2. FINISH : 0.8~1.8 $\mu\text{m}$ ,Tin(Sn) plating overall  
0.3~0.8 $\mu\text{m}$ ,Copper(Cu) plating
  3. PRODUCT SPECIFICATION : PS-35150-001, PS-35180-002  
PS-35180-003, PS-35524-001
  4. CRIMPING SPECIFICATION : CS-35745-001
  5. RECOMMENDED LENGTH OF WIRE STRIP IS 4.0~4.8mm



| MATERIAL NO | ENG. No.   | AWG     | a    | b    | c    | d   | PITCH 'P' |
|-------------|------------|---------|------|------|------|-----|-----------|
| 357450210   | 35745-0210 | #18-#14 | 3.4  | 3.8  | 5.2  | 4.8 | 12.0      |
| 357450110   | 35745-0110 | #22-#20 | 2.85 | 2.8  | 4.2  | 4.0 | 10.6      |
| 357450410   | 35745-0410 | #24     | 2.2  | 1.75 | 3.85 | 3.5 | 10.6      |

|  |                              |   |                                    |   |                             |                        |  |
|--|------------------------------|---|------------------------------------|---|-----------------------------|------------------------|--|
| REVISED<br>EC NO: KOR2009-0151<br>T1: DRWN: JHPARK01 2009/05/18<br>CHYKHW, YANG 2009/06/18<br>APPR: YMSJKKIM 2009/07/01<br>REV DESCRIPTION | QUALITY SYMBOLS              | GENERAL TOLERANCES (UNLESS SPECIFIED)   | DIMENSION STYLE                    | SCALE   | DESIGN UNITS                | THIRD ANGLE PROJECTION |  |
|  | $\nabla=0$<br>$\nabla=0$     | mm INCH   | MM ONLY                            | 4:1   | METRIC                      |                        |  |
|  |                              | 4 PLACES $\pm$ --- $\pm$ ---  | DRAWN BY JS.KANG DATE 1998/01/19   | TITLE   | .070 MALE TERMINAL (A-TYPE) |                        |  |
|  |                              | 3 PLACES $\pm$ --- $\pm$ ---  | CHECKED BY BK.CHOI DATE 1998/01/19 | MOLEX INCORPORATED<br>DOCUMENT NO. SD-35745-001 SHEET NO. 1 OF 01 |                             |                        |  |
|  | 2 PLACES $\pm$ 0.2 $\pm$ --- | APPROVED BY CW.LEE DATE 1998/01/19  |                                    |   |                             |                        |  |
|  | 1 PLACE $\pm$ 0.3 $\pm$ ---  | ANGULAR $\pm$ 1°  | MATERIAL NO. SEE TABLE             |   |                             |                        |  |
| DRAFT WHERE APPLICABLE MUST REMAIN WITHIN DIMENSIONS   |                              | THIS DRAWING CONTAINS INFORMATION THAT IS PROPRIETARY TO MOLEX INCORPORATED AND SHOULD NOT BE USED WITHOUT WRITTEN PERMISSION |                                    |   |                             |                        |  |

ib\_frame\_A3\_P\_ME\_T  
Rev. E 2006/04/15

9 8 7 6 5 4 3 2 1