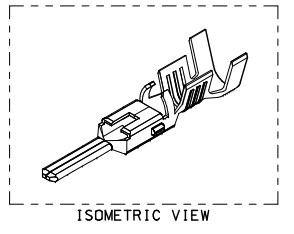
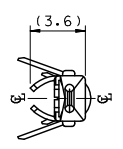
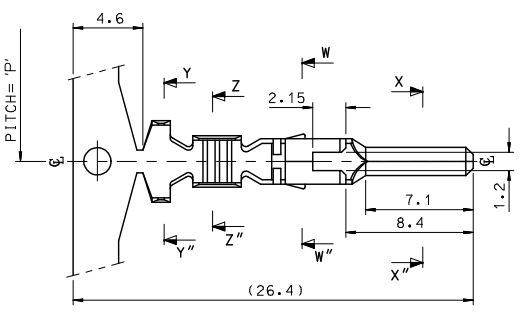
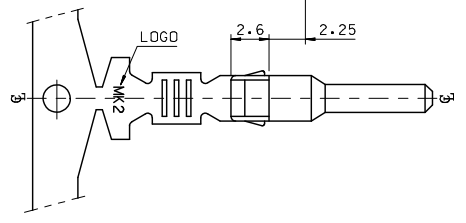
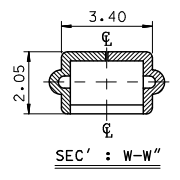
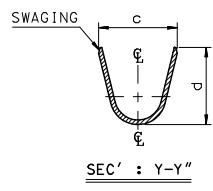
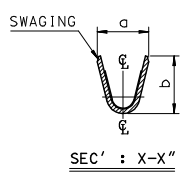
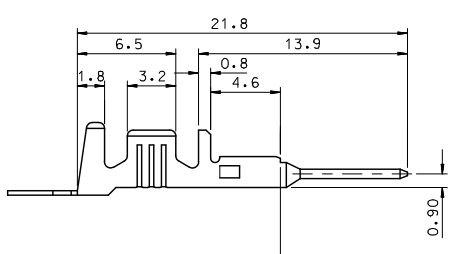
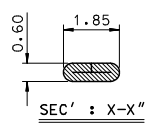


10 9 8 7 6 5 4 3 2 1



- NOTES.
1. MATERIAL : Cu BRASS, PRE-TIN PLATED
 2. FINISH : 0.8~1.8 μm , Tin(Sn) plating overall
0.3~0.8 μm , Copper(Cu) plating
 3. PRODUCT SPECIFICATION : PS-35150-001, PS-35180-002
PS-35180-003, PS-35524-001
 4. CRIMPING SPECIFICATION : CS-35745-001
 5. RECOMMENDED LENGTH OF WIRE STRIP IS 4.0~4.8mm



MATERIAL NO	ENG. No.	AWG	a	b	c	d	PITCH 'P'
357450210	35745-0210	#18-#14	3.4	3.8	5.2	4.8	12.0
357450110	35745-0110	#22-#20	2.85	2.8	4.2	4.0	10.6
357450410	35745-0410	#24	2.2	1.75	3.85	3.5	10.6

REVISED EC NO: KOR2009-0151 TDRW: JHPARK01 2009/05/18 CHK: HWYANG 2009/06/18 APPR: YMSIKKIM 2009/07/01 REV DESCRIPTION	QUALITY SYMBOLS	GENERAL TOLERANCES (UNLESS SPECIFIED)	DIMENSION STYLE	SCALE	DESIGN UNITS	THIRD ANGLE PROJECTION
	$\nabla=0$ $\nabla=0$	mm INCH 4 PLACES \pm --- \pm --- 3 PLACES \pm --- \pm --- 2 PLACES ± 0.2 \pm --- 1 PLACE ± 0.3 \pm --- ANGULAR $\pm 1^\circ$	MM ONLY	4:1	METRIC	
	DRAFT WHERE APPLICABLE MUST REMAIN WITHIN DIMENSIONS		DRAWN BY JS.KANG DATE 1998/01/19		TITLE .070 MALE TERMINAL (A-TYPE)	
			CHECKED BY BK.CHOI DATE 1998/01/19		APPROVED BY CW.LEE DATE 1998/01/19	MATERIAL NO. SEE TABLE

ib_frame_A3_P_ME_T
Rev. E 2006/04/15

9 8 7 6 5 4 3 2 1