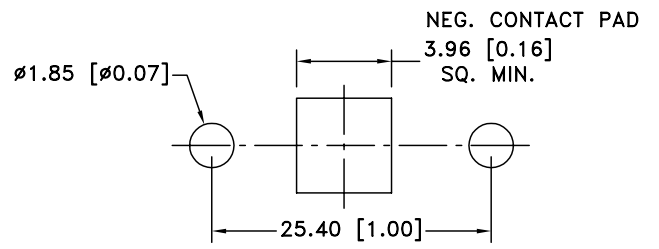
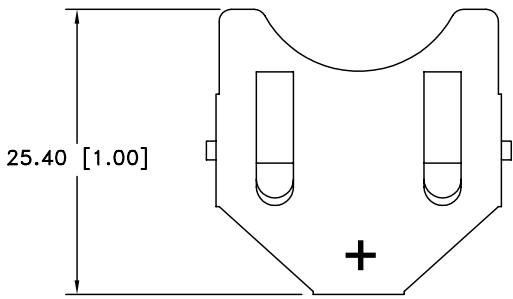
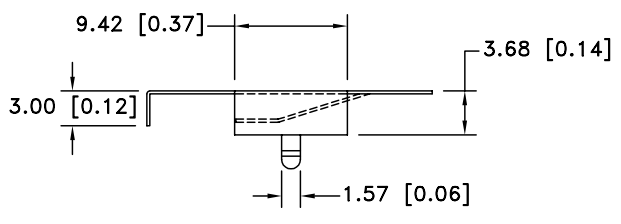
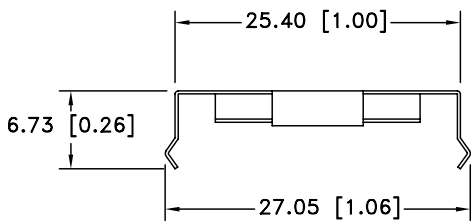



Date	SYM	REVISION RECORD	AUTH	DR.	CK.
1/07/06	A	ADDED "ROHS COMPLIANT"	T.B.	B.S.	
2/04/06	B	ADDED CHAMFERS	T.B.	B.S.	



PCB LAYOUT



- NOTES:
 1. MATERIAL:
 0.25mm PHOSPHOR BRONZE, NICKLE PLTD.
 2. ROHS COMPLIANT

Tolerance (Except as noted)	 Memory Protection Devices, Inc 200 Broad Hollow Road, Farmingdale, New York 11735	Scale	Drawn By B.S.
decimal ± .5 (.020)		Approved By T.B.	
Fractional ± .8 (.030)	Title COIN CELL RETAINER FOR 24mm DIA. BATTERIES		
Angular ± 3°	Date 2/04/06	Drawing Number BK-887	

CELL SIZE	RETAINS BATTERY NUMBERS
24mm	CR2430, DL2430