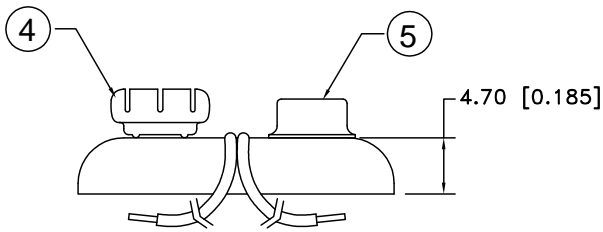
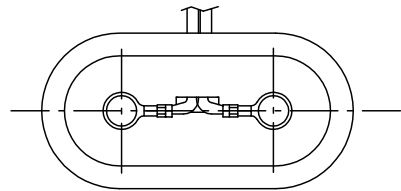


| Date    | SYM | REVISION RECORD        | AUTH | DR.  | CK. |
|---------|-----|------------------------|------|------|-----|
| 5/26/07 | A   | ADDED "ROHS COMPLIANT" | T.B. | B.S. |     |
|         |     |                        |      |      |     |
|         |     |                        |      |      |     |
|         |     |                        |      |      |     |



**NOTES:**

1. T STYLE 2 PCS. MOLDED CASE CONSTRUCTION WITH CRIMP CONNECTIONS. CRIMP ON WIRE INSULATION AND ON WIRE PROVIDES STRAIN RELIEF THAT STANDARD SOLDERED SNAPS DO NOT HAVE.
2. ROHS COMPLIANT

| NO. | PART NAME     | MATERIAL   | QTY. | Tolerance<br>(Except as noted) | Memory Protection Devices, Inc<br>200 Broad Hollow Road, Farmingdale, New York 11735 |   |
|-----|---------------|--|------|--------------------------------|--|---|
| 1   | MOLDED CASE   | 2 PCS., POLYETHYLENE, WHITE WITH BLUE INSERT     | 1    | decimal<br>±.5 (.020)          | Scale  | Drawn By B.S.   |
| 2   | BLACK WIRE(-) | 24 AWG OR 26 AWG, UL-1007, CSA TR-64, 300V, 80°C | 1    |                                |  | Approved By T.B.  |
| 3   | RED WIRE (+)  | 24 AWG OR 26 AWG, UL-1007, CSA TR-64, 300V, 80°C | 1    | Fractional<br>±.8 (.030)       | Title  | 9 VOLT BATTERY SNAP-T STYLE-12" WIRE LEADS, MOLDED CASE |
| 4   | FEMALE SNAP   | BRASS, NICKLE PLATED                             | 1    |                                |  |   |
| 5   | MALE SNAP     | BRASS NICKLE PLATED                              | 1    | Angular<br>± 3°                | Date   | Drawing Number  |
|     |               |  |      |                                | 5/26/07  | BS12T-MC  |