


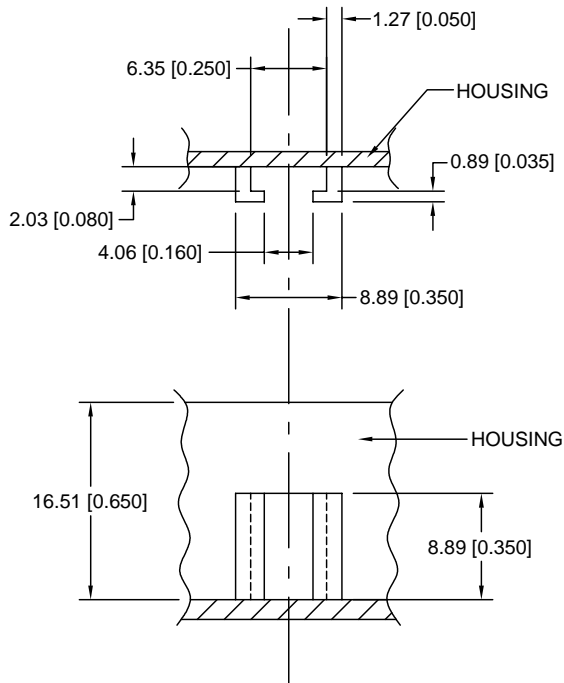
Date	SYM	REVISION RECORD	AUTH	DR.	CK.
05/01/01	A	ADDED LOCKING TAB	T.B.	B.S.	
01/31/04	B	REDRAWN WITH NEW DIMENSION	T.B.	B.S.	


**NOTES:**

1. MATERIAL: 0.38mm (0.015") THICK., PHOSPHOR BRONZE, ASTM B159 SPRING HARD TEMPER.
2. DEBURR ALL CORNERS AND EDGES R0.13mm (0.005") MIN.
3. BRIGHT NICKLE PLATE QQ-N-290 CLASS 1, GRADE G, TYPE 1, 4-6% PLATING PHOSPHOR CONTENT.
4. SOLDER WIRE LEADS INTO Ø1.02mm (Ø0.040") HOLES AS NEEDED.

Tolerance (Except as noted)	 <b>Memory Protection Devices, Inc</b> 200 Broad Hollow Road, Farmingdale, New York 11735	
decimal		Scale
±.5 (.020)		Drawn By B.S.
Fractional	Title	
± .8 (.030)	MPD DL223A BATTERY HOLDER CONTACT	
Angular	Date	Drawing Number
± 3°	01/31/04	ABG-165

Date	SYM	REVISION RECORD	AUTH	DR.	CK.



Tolerance (Except as noted)	 <b>Memory Protection Devices, Inc</b> 200 Broad Hollow Road, Farmingdale, New York 11735		
decimal ±.5 (.020)		Scale	Drawn By B.S. Approved By T.B.
Fractional ± .8 (.030)	Title ABG-165 APPLICATION NOTES		
Angular ± 3°	Date 4/22/06	Drawing Number ABG-165 APPLICATION	