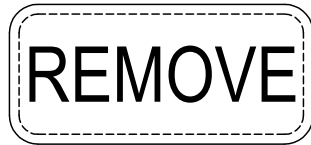
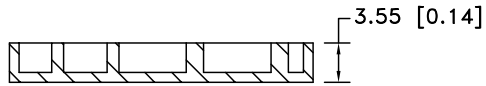
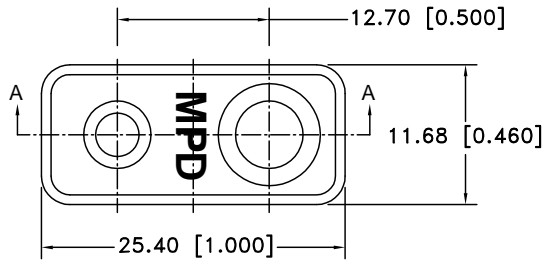



| Date | SYM | REVISION RECORD | AUTH | DR. | CK. |
|---------|-----|------------------------|------|------|-----|
| 9/10/06 | A | ADDED "ROHS COMPLIANT" | T.B. | B.S. | |
| | | | | | |
| | | | | | |
| | | | | | |



NOTES:
MATERIAL: GP POLYPROPYLENE, BLACK
ROHS COMPLIANT

| | | | |
|--------------------------------|--|----------------------------|------------------|
| Tolerance (Except as noted) |  Memory Protection Devices, Inc 200 Broad Hollow Road, Farmingdale, New York 11735 | Scale | Drawn By B.S. |
| decimal ± .5 (.020) | | | Approved By T.B. |
| Fractional ± .8 (.030) | Title COVER FOR 9 VOLT TERMINALS WITH 1/2" SPACING | | |
| Angular ± 3° | Date 9/10/06 | Drawing Number BS-COVER | |