

Cylindrical Inductive Sensors with Separate Amplifiers Provide Variable Detecting Capabilities

- Separate amplifier allows sensor to fit in space-confined sites, providing easy access for monitoring and remote adjustments
- Detecting distance and differential travel can be adjusted to meet specific application requirements
- Adjustable differential travel to set switching trigger point available on some amplifiers



Ordering Information

■ SENSORS

Miniature Sizes

| Sensor type | Shielded | | | | |
|----------------------------|------------------|------------------|------------------|----------------|----------------|
| Size | 2.0 mm dia. | 3.5 mm dia. | 3.8 mm dia. | M5 | 5.4 mm dia. |
| Nominal detecting distance | 0.5 mm (0.02 in) | 0.8 mm (0.03 in) | 0.8 mm (0.03 in) | 1 mm (0.04 in) | 1 mm (0.04 in) |
| Part number | E2C-CR5B | E2C-CR8A | E2C-CR8B | E2C-X1A | E2C-C1A |

Standard Sizes

| Sensor type | Shielded | | | | Unshielded |
|----------------------------|------------------|----------------|----------------|-----------------|------------------|
| Size | M8 | M12 | M18 | M30 | 40 mm dia. |
| Nominal detecting distance | 1.5 mm (0.06 in) | 2 mm (0.08 in) | 5 mm (0.20 in) | 10 mm (0.39 in) | 20 mm (0.79 in) |
| Part number | E2C-X1R5A | E2C-X2A | E2C-X5A | E2C-X10A | E2C-C20MA |

■ AMPLIFIERS

Socket-Mount Types

| Size | 1/16 DIN | | Miniature | | | |
|--------------------|-------------------------|----------------------------|---|-----------------|-----------------|-----------------|
| Applicable sensors | All models | | E2C-CR8A, E2C-CR8B, E2C-X1A, E2C-C1A, E2C-X1R5A | | E2C-CR5B | |
| Supply voltage | 90 to 264 VAC, 50/60 Hz | 10 to 30 VDC | 10 to 30 VDC | | | |
| Output type | Transistor and relay | Open collector NPN and PNP | NPN | PNP | NPN | PNP |
| Part number | E2C-AK4A | E2C-AM4A | E2C-GE4A | E2C-GF4A | E2C-GE4B | E2C-GF4B |

■ AMPLIFIERS

Track-Mount Types

| | | |
|--------------------|--|--|
| Size | Prewired | Screw terminal |
| Applicable sensors | E2C-CR8A, E2C-X1A, E2C-C1A E2C-X1R5A, E2C-X2A | E2C-CR8A, E2C-X1A, E2C-C1A, E2C-X1R5A |
| Supply voltage | 10 to 30 VDC, | |
| Output type | NPN with alarm output | Open collector NPN and PNP |
| Part number | E2C-JC4AP | E2C-WH4AF |

■ ACCESSORIES

| Description | | Part number | |
|---|---|--|-----------------|
| Mounting brackets for sensors | Fits 3.5 mm and 3.8 mm dia. unthreaded sensor | Y92E-F3R5 | |
| | Fits M8 size threaded sensor | Y92E-B8 | |
| | Fits M12 size threaded sensor | Y92E-B12 | |
| | Fits M18 size threaded sensor | Y92E-B18 | |
| | Fits M30 size threaded sensor | Y92E-B30 | |
| Sockets for amplifiers | E2C-AK4A amplifier | Bottom surface or track mounting, top screw terminals | P2CF-11 |
| | | Panel mounting, bottom solder terminal | PL11 |
| | | Back mounting, for use with Y92F-30 mounting adapter, bottom screw terminals | P3G-11 |
| | E2C-AM4A amplifier | Bottom surface or track mounting, top screw terminals | P2CF-08 |
| | | Panel mounting, bottom solder terminals | PL08 |
| | | Back mounting, for use with Y92F-30 mounting adapter, bottom screw terminals | P3G-08 |
| | E2C-G□4□ amplifiers | Bottom surface or track mounting, top screw terminals | PYF08A-E |
| | | Panel mounting, bottom solder terminals | PY08 |
| | | Bottom surface mounting, bottom screw terminals | PYF08M |
| Panel mounting adapters for E2C-A□4A amplifiers | Fits behind panel; ideal for side by side installation. Use P2CF-□□ sockets. | Y92F-30 | |
| | Installs through panel front; amplifier face fits bezel, rear of amplifier clips to adapter. Use P3G-□□ sockets. Charcoal gray. | Y92F-70 | |
| Protective covers for E2C-A□4A amplifiers | Hard plastic cover; not for use with Y92F-70 panel adapter | Y92A-48 | |
| | Soft plastic cover; not for use with Y92F-70 panel adapter | Y92A-48D | |
| Mounting track | DIN rail, 50 cm (1.64 ft) length | PFP-50N | |
| | DIN rail, 1 m (3.28 ft) length | PFP-100N | |
| | End plate | PFP-M | |
| | Spacer | PFP-S | |

■ REPLACEMENT PARTS

| Description | | Part number |
|---|---|-----------------|
| Mounting hardware includes one pair of metal nuts and washers | Fits M5 size sensors (supplied with each sensor) | M5-MHWS |
| | Fits M8 size sensors (supplied with each sensor) | M8-MHWS |
| | Fits M12 size sensors (supplied with each sensor) | M12-MHWS |
| | Fits M18 size sensors (supplied with each sensor) | M18-MHWS |
| | Fits M30 size sensors (supplied with each sensor) | M30-MHWS |

Specifications

■ MINIATURE SENSORS

| | | | | | | |
|--|--|---|--------------------|--|---------------------|-------------|
| Part number | E2C-CR5B | E2C-CR8A | E2C-CR8B | E2C-X1A | E2C-C1A | |
| Sensor type | Inductive | | | | | |
| Body | Size | 2.0 mm dia. | 3.5 mm dia. | 3.8 mm dia. | M5 | 5.4 mm dia. |
| | Type | Shielded | | | | |
| Required amplifier | E2C-AK4A, E2C-AM4A, E2C-GE4B or E2C-GF4B | E2C-AK4A, E2C-AM4A, E2C-GE4A, E2C-GF4A, E2C-JC4AP or E2C-WH4AF | | | | |
| Detectable object type | Metallic objects | | | | | |
| Usable setting distance at ambient (with standard target) | 0 to 0.5 mm (0 to 0.02 in) | 0 to 0.8 mm (0 to 0.03 in) | | 0 to 1.0 mm (0 to 0.04 in) | | |
| Usable setting distance at 0° to 40°C (with standard target) | 0 to 0.7 mm (0 to 0.028 in) | 0 to 1.2 mm (0 to 0.047 in) | | 0 to 1.5 mm (0 to 0.059 in) | | |
| Standard target size (mild steel, L x W x H) | 5 x 5 x 1 mm (0.20 x 0.20 x 0.04 in) | | | | | |
| Differential travel | See "Differential Travel" tables | | | | | |
| Response frequency | 1 kHz | | | | | |
| Materials | Housing | 304 stainless steel | | | Nickel-plated brass | |
| | Sensing face | ABS | | | | |
| | Cable sheath | Polyethylene | | | | |
| Mounting | — | Optional mounting strap Y92E-F3R5, order separately | | Two lock washers and M5 nuts included | — | |
| Connections | Prewired | Two-conductor cable, 3 m (9.8 ft) length | | | | |
| Weight with cable | 10 g (0.4 oz.) | 40 g (1.4 oz.) | | 45 g (1.6 oz.) | | |
| Enclosure ratings | UL | — | | | | |
| | NEMA | 1,2 | 1, 3, 4, 6, 12, 13 | | | |
| | IEC 144 | IP64 | IP67 | | | |
| Approvals | UL | — | | | | |
| | CSA | — | | | | |
| Ambient operating temperature | -25° to 70°C (-13° to 158°F) | | | | | |
| Vibration | 10 to 55 Hz, 1.5 mm (0.06 in) double amplitude, 2 hours each, X and Y directions | | | | | |
| Shock | 50 G's, 3 times each, X and Y directions | | | | | |

■ STANDARD SIZE SENSORS

| Part number | | E2C-X1R5A | E2C-X2A | E2C-X5A | E2C-X10A | E2C-C20MA |
|---|--------------|--|--|--|--|---|
| Sensor type | | Inductive | | | | |
| Body | Size | M8 | M12 | M18 | M30 | 40 mm dia. |
| | Type | Shielded | | | | Unshielded |
| Required amplifier | | E2C-JC4AP, E2C-AK4A or E2C-AM4A | | E2C-AK4A or E2C-AM4A | | |
| Detectable object type | | Metallic objects | | | | |
| Usable setting distance at ambient (with standard target) | | 0 to 1.5 mm (0 to 0.06 in) | 0 to 2 mm (0 to 0.08 in) | 0 to 5 mm (0 to 0.20 in) | 0 to 10 mm (0 to 0.39 in) | 0 to 20 mm (0 to 0.79 in) |
| Usable setting distance 0° to 40°C (with standard target) | | 0 to 2 mm (0 to 0.079 in) | 0 to 2.5 mm (0 to 0.098 in) | 0 to 7 mm (0 to 0.276 in) | 0 to 15 mm (0 to 0.591 in) | 0 to 28 mm (0 to 1.102 in) |
| Standard target size (mild steel, L x W x H) | | 8 x 8 x 1 mm (0.32 x 0.32 x 0.04 in) | 12 x 12 x 1 mm (0.47 x 0.47 x 0.04 in) | 18 x 18 x 1 mm (0.71 x 0.71 x 0.04 in) | 30 x 30 x 1 mm (1.18 x 1.18 x 0.04 in) | 50 x 50 x 1 mm (1.97 x 1.97 x 0.04 in) |
| Differential travel | | See "Differential Travel" tables | | | | |
| Response frequency | | 800 Hz | | 350 Hz | 100 Hz | 50 Hz |
| Materials | Housing | Nickel-plated brass | | | | |
| | Sensing face | ABS | | | | |
| | Cable sheath | Polyethylene | | | | |
| Mounting | | Two lock washers and M8 nuts included. Bracket Y92E-B8 optional. | Two lock washers and M12 nuts included. Bracket Y92E-B12 optional. | Two lock washers and M18 nuts included. Bracket Y92E-B18 optional. | Two lock washers and M30 nuts included. Bracket Y92E-B30 optional. | — |
| Connections | Prewired | Two-conductor cable, 3 m (9.8 ft) length | | | | |
| Weight with cable | | 50 g (1.8 oz.) | 60 g (2.1 oz.) | 140 g (4.9 oz.) | 270 g (9.5 oz.) | 300 g (10.6 oz.) |
| Enclosure ratings | UL | — | | | | |
| | NEMA | 1, 3, 4, 6, 12, 13 | | | | |
| | IEC 144 | IP67 | | | | |
| Approvals | UL | — | | | | |
| | CSA | — | | | | |
| Ambient operating temperature | | -25° to 70°C (-13° to 158°F) | | | | |
| Vibration | | 10 to 55 Hz, 1.5 mm (0.06 in) double amplitude, 2 hours each, X and Y directions | | | | |
| Shock | | 50 G's, 3 times each, X and Y directions | | | | |

■ AMPLIFIERS

Socket-Mount Type

| Part number | | E2C-AK4A | E2C-AM4A | E2C-GE4A | E2C-GF4A | E2C-GE4B | E2C-GF4B | |
|-------------------------------|----------------|--|--|---|---------------------------------|-----------------------------------|---------------------------------|-----------------------------------|
| Supply voltage | | 90 to 264 VAC, 50/60 Hz | 10 to 30 VDC | | | | | |
| Current consumption | | 55 mA max. | 25 mA max. | | | | | |
| Differential travel | | See "Differential Travel" tables | | | | | | |
| Control output | Relay | Type | SPDT | — | | | | |
| | | Max. load | 2 A, 250 VAC (p.f. = 1) | — | | | | |
| | | Min. load | 1 mA, 5 VDC | — | | | | |
| | DC solid-state | Type | Transistor, SPST | One NPN open collector, one PNP open collector | NPN open collector with pull-up | PNP open collector with pull-down | NPN open collector with pull-up | PNP open collector with pull-down |
| | | Max. load | 50 mA, 40 VDC | 200 mA | 100 mA | | | |
| | | Max. on-state voltage drop | 2 VDC | 1.5 VDC | | | | |
| Indicators | | Output Operation (red LED) and Output Stability (red LED) | | Output Operation (red LED) | | | | |
| Materials | Case | Plastic | | | | | | |
| Mounting | | Requires P2CF-11, PL11 or P3G-11 socket (not included). Order separately from Accessories. | Requires P2CF-08, PL08 or P3G-08 socket (not included). Order separately from Accessories. | Requires PYF08A-E, PY08 or PYF08M socket (not included). Order separately from Accessories. | | | | |
| Connections | | Plated steel screw terminals or solder terminals, refer to sockets in Accessories section. | | | | | | |
| Weight (not including socket) | | 250 g (8.8 oz.) | 140 g (4.9 oz.) | 20 g (0.7 oz.) | | | | |
| Enclosure ratings | UL | — | | | | | | |
| | NEMA | 1 | | | | | | |
| | IEC 144 | IP 40 | | | | | | |
| Approvals | UL | — | | | | | | |
| | CSA | — | | | | | | |
| Ambient operating temperature | | -10° to 55°C (14° to 131°F) | | | | | | |
| Vibration | | 10 to 25 Hz, 2 mm (0.08 in) double amplitude, 2 hours each, X and Y directions | | | | | | |
| Shock | | 10 G's, 3 times each, X and Y directions | | | | | | |

■ AMPLIFIERS

Track-Mount Type

| | | | | |
|-------------------------------|----------------|--|---|--|
| Part number | | E2C-JC4AP | E2C-WH4AF | |
| Supply voltage | | 10 to 30 VDC | | |
| Current consumption | | 45 mA | 25 mA | |
| Differential travel | | See "Differential Travel" tables | | |
| Control output | DC solid-state | Type | NPN open collector | One NPN open collector, one PNP open collector |
| | | Max. load | 100 mA | 200 mA |
| | | Max. on-state voltage drop | 1 VDC | 0.7 VDC |
| Alarm output | Type | NPN open collector | Not provided | |
| | Max. load | 50 mA | — | |
| Indicators | | Output Operation (red LED), Output Stability (green LED) | Output Operation (red LED) | |
| Materials | Case | Plastic | | |
| Mounting | | DIN rail track, E39-L48 mounting bracket, or two side through holes | DIN rail track or bottom surface with two through holes | |
| Connections | | Prewired, 4-conductor cable, 2 m (6.56 ft) length | Terminal screws or direct connection to S308 sensor controller with E99-C connector (included). | |
| Weight | | 80 g (2.8 oz.) with cable | 80 g (2.8 oz.) with cable | |
| Enclosure ratings | UL | — | | |
| | NEMA | 1 | | |
| | IEC 144 | IP 40 | | |
| Approvals | UL | — | | |
| | CSA | — | | |
| Ambient operating temperature | | -10° to 55°C (14° to 131°F) | | |
| Vibration | | 10 to 25 Hz, 2 mm (0.08 in) double amplitude, 2 hours each, X and Y directions | | |
| Shock | | 10 G's, 3 times each, X and Y directions | | |

■ DIFFERENTIAL TRAVEL

E2C-AK4A and E2C-AM4A amplifiers

| Amplifier part number | Sensor part number | Differential travel (% of detecting distance) | |
|-----------------------|--------------------|---|-------------------------------|
| | | At minimum detecting distance | At maximum detecting distance |
| E2C-AK4A | E2C-CR5B | 1 to 5%, adjustable | 1 to 5%, adjustable |
| | E2C-CR8A | | |
| | E2C-CR8B | | |
| | E2C-X1A | | |
| | E2C-C1A | | |
| | E2C-X1R5A | | |
| | E2C-X2A | | |
| | E2C-X5A | | |
| | E2C-X10A | | |
| | E2C-C20MA | | |
| | E2C-AM4A | | |
| E2C-CR8A | | | |
| E2C-CR8B | | | |
| E2C-X1A | | | |
| E2C-C1A | | | |
| E2C-X1R5A | | | |
| E2C-X2A | | | |
| E2C-X5A | | | |
| E2C-X10A | | | |
| E2C-C20MA | | | |

E2C-G□4A, E2C-G□4B and E2C-WH4AF amplifiers

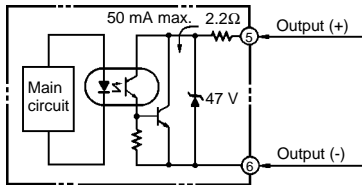
| Amplifier part number | Sensor part number | Differential travel (% of detecting distance) | |
|-----------------------|--------------------|---|-------------------------------|
| | | At minimum detecting distance | At maximum detecting distance |
| E2C-G□4A | E2C-CR8A,8B | 2.0 to 4.7%, fixed | 3.8 to 6.0%, fixed |
| | E2C-X1A | 0.9 to 1.9%, fixed | 0.4 to 3.8%, fixed |
| | E2C-C1A | 0.5 to 2.6%, fixed | 0.1 to 4.3%, fixed |
| | E2C-X1R5A | 1.7 to 4.2%, fixed | 2.7 to 6.0%, fixed |
| E2C-G□4B | E2C-CR5B | 1.6 to 17.6%, fixed | 4.4 to 19.2%, fixed |
| E2C-JC4AP, E2C-WH4AF | E2C-CR8A | 2.0 to 4.7%, fixed | 3.8 to 6.0%, fixed |
| | E2C-X1A | 0.9 to 1.9%, fixed | 0.4 to 3.8%, fixed |
| | E2C-C1A | 0.5 to 2.6%, fixed | 0.1 to 4.3%, fixed |
| | E2C-X1R5A | 1.7 to 4.2%, fixed | 2.7 to 6.0%, fixed |

Operation

■ OUTPUT CIRCUIT DIAGRAMS

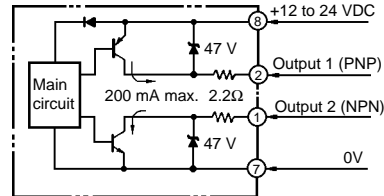
E2C-AK4A Amplifier

AC input, transistor and relay outputs



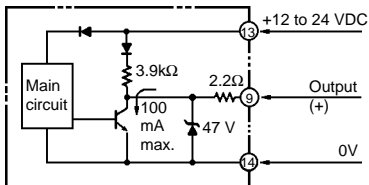
E2C-AM4A Amplifier

DC input, open collector NPN and PNP outputs



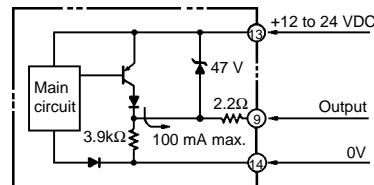
E2C-GE4□ Amplifiers

DC input, NPN or PNP outputs



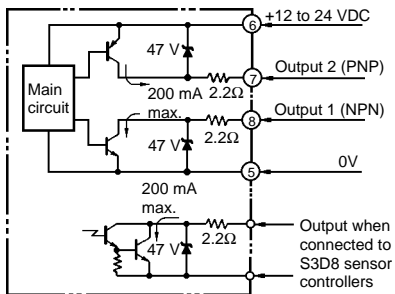
E2C-GF4□ Amplifiers

DC input, NPN and PNP outputs



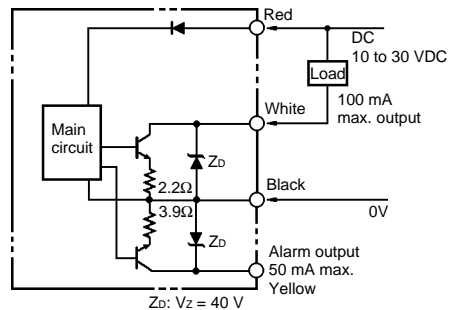
E2C-WH4AF Amplifier

DC input, open collector NPN and PNP outputs



E2C-JC4AP Amplifier

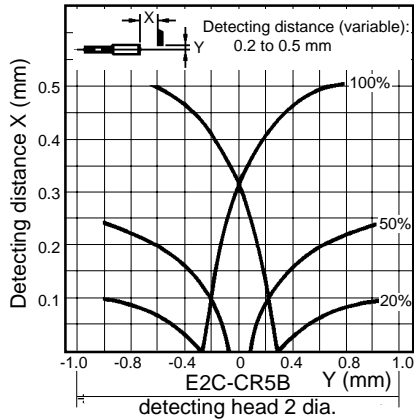
DC input, open collector NPN output with alarm



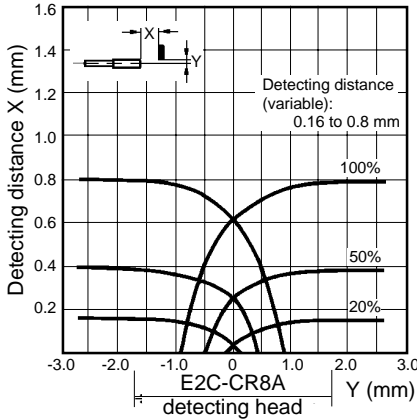
Engineering Data

OPERATING RANGE

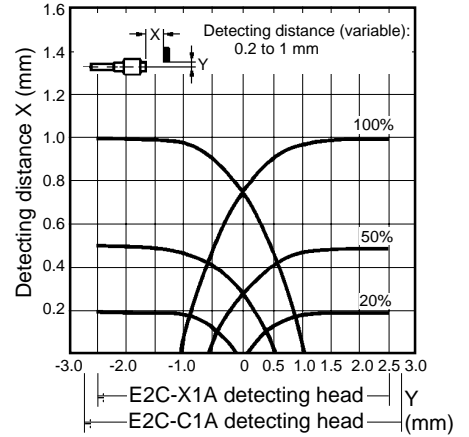
**Shielded 2 mm dia. sensor
E2C-CR5B**



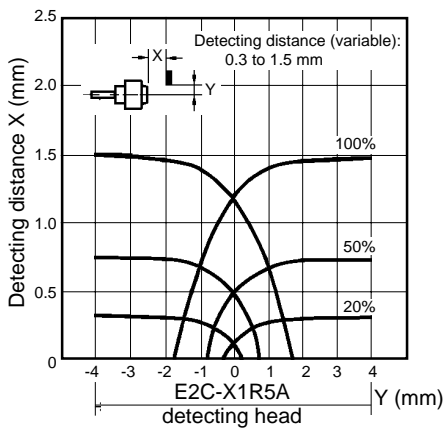
**Shielded 3.5 mm & 3.8 mm dia. sensor
E2C-CR8A, E2C-CR8B**



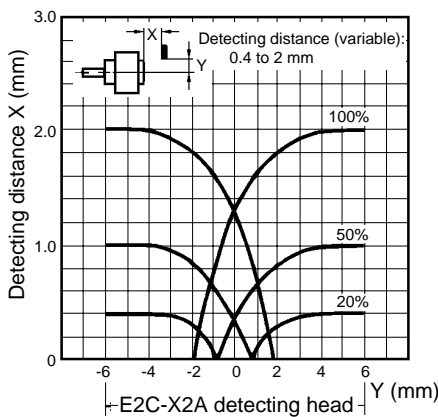
**Shielded M5 and 5.4 mm dia. sensors
E2C-X1A, E2C-C1A**



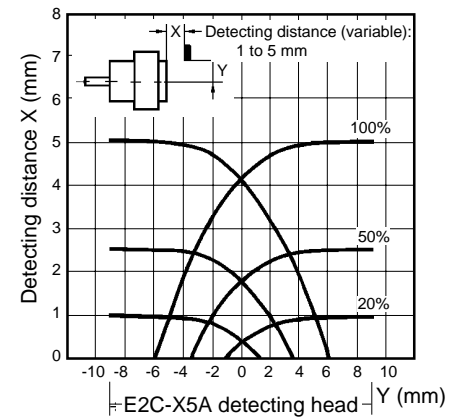
**Shielded M8 sensor
E2C-X1R5A**



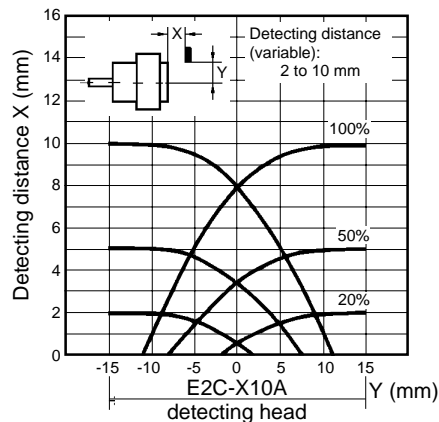
**Shielded M12 sensor
E2C-X2A**



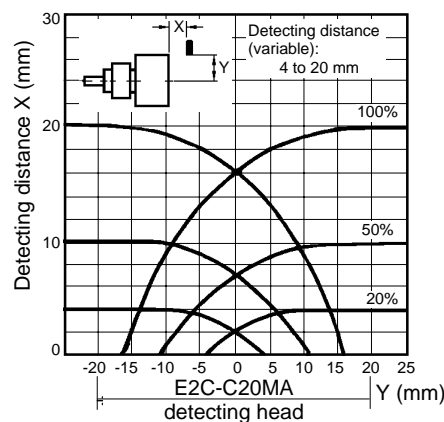
**Shielded M18 sensor
E2C-X5A**



**Shielded M30 sensor
E2C-X10A**

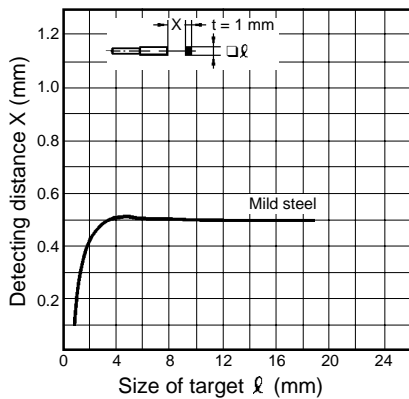


**Unshielded 40 mm dia. sensor
E2C-C20MA**

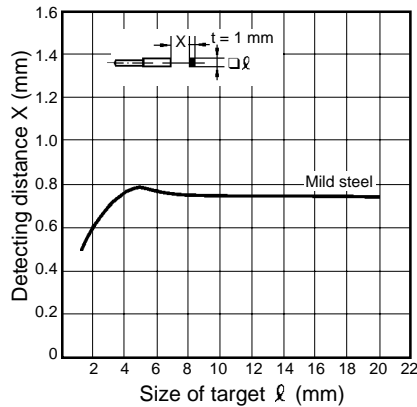


DETECTING DISTANCE vs. SIZE AND MATERIAL OF TARGET

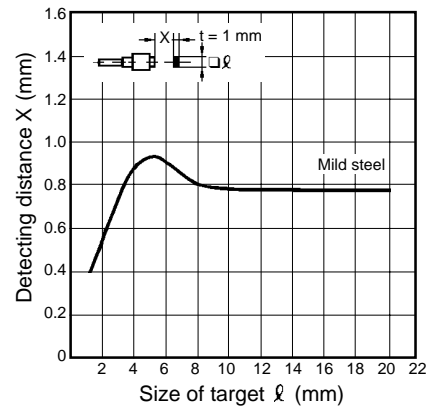
Shielded 2 mm dia. sensor
E2C-CR5B



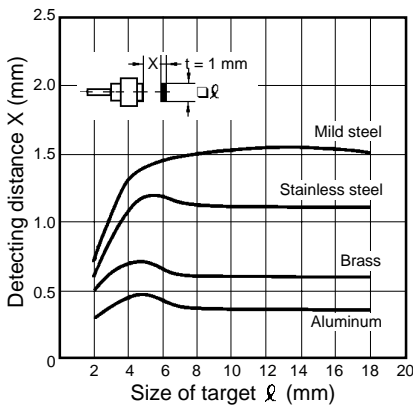
Shielded 3.5 mm & 3.8 mm dia. sensor
E2C-CR8A, E2C-CR8B



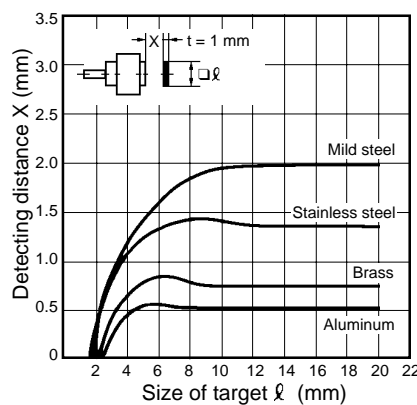
Shielded M5 and 5.4 mm dia. sensors
E2C-X1A, E2C-C1A



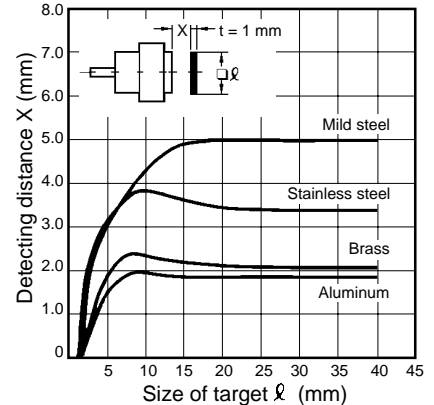
Shielded M8 sensor
E2C-X1R5A



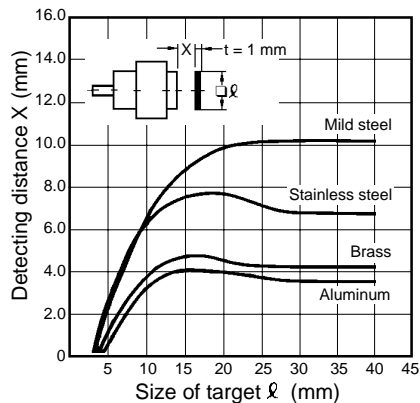
Shielded M12 sensor
E2C-X2A



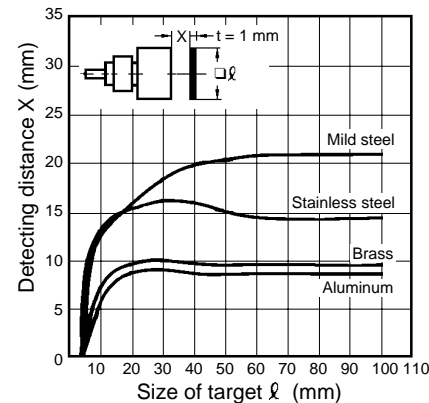
Shielded M18 sensor
E2C-X5A



Shielded M30 sensor
E2C-X10A



Unshielded 40 mm dia. sensor
E2C-C20MA



Note: If the target is a nonferrous metal, the operating distance of the proximity sensor decreases. However, with a piece of foil measuring about 0.01 mm (0.0004 inch) in thickness, the detecting distance is equivalent to that with a ferrous metal. Note that the proximity sensor cannot detect extremely thin evaporated films and non-conductive targets.

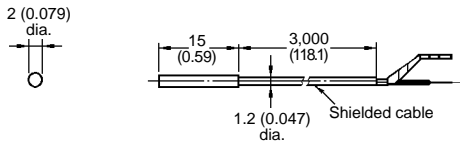
Dimensions

Unit: mm (inch)

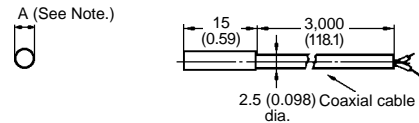
■ SENSORS

Miniature Sizes

E2C-CR5B

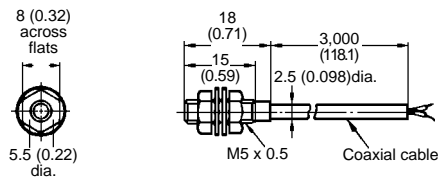


E2C-CR8A, E2C-CR8B

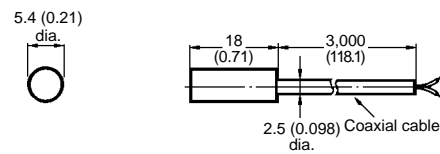


Note: For E2C-CR8A, A= 3.5 mm (0.14 in)
For E2C-CR8B, A=3.8 mm (0.15 in)

E2C-X1A

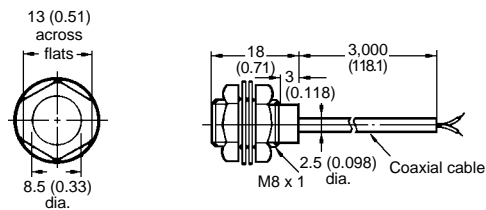


E2C-C1A

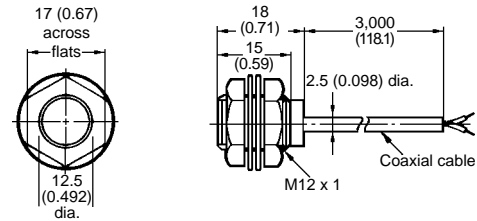


Standard Sizes

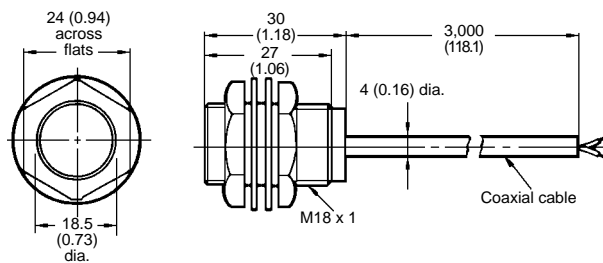
E2C-X1R5A



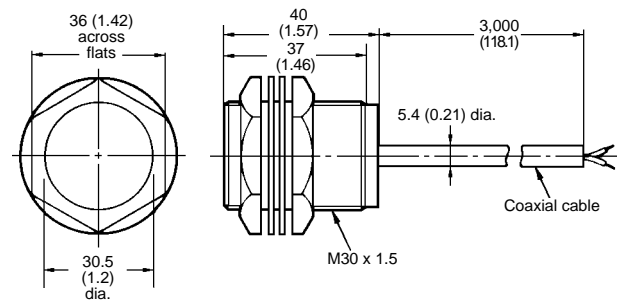
E2C-X2A



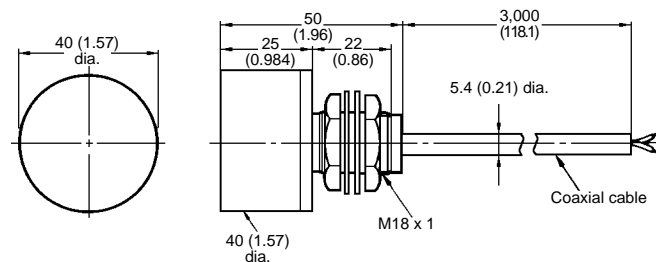
E2C-X5A



E2C-X10A



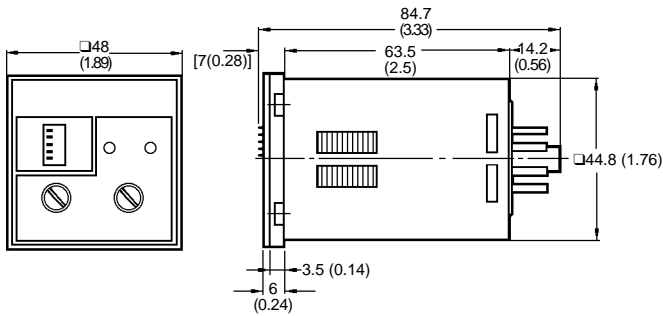
E2C-C20MA



■ SOCKET-MOUNT AMPLIFIERS

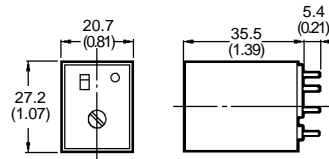
1/16 DIN Size

E2C-AK4A AC type, fits 11-pin sockets
E2C-AM4A DC type, fits 8-pin sockets



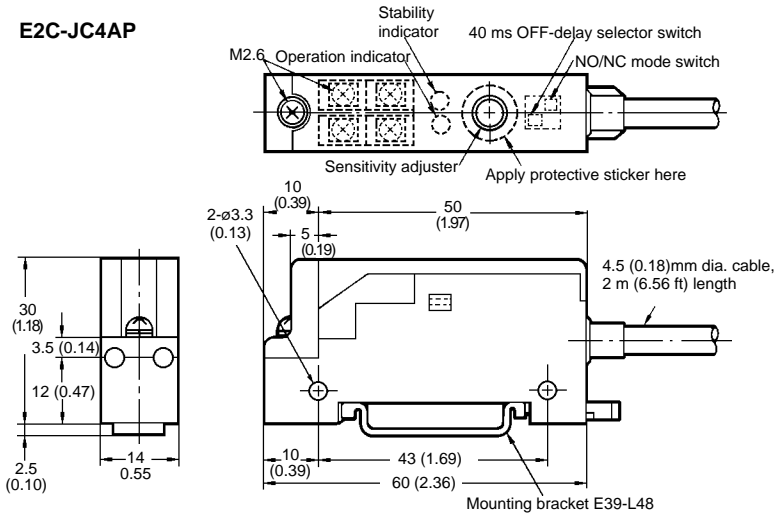
Miniature

E2C-G□4□

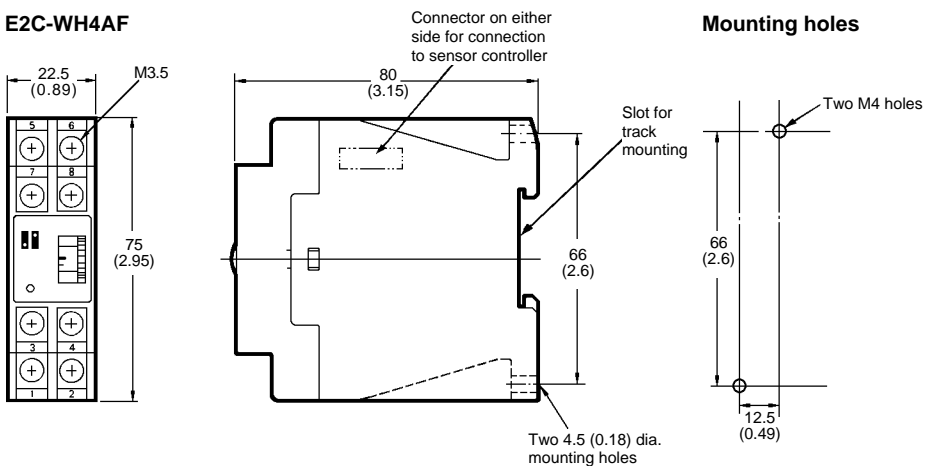


■ TRACK-MOUNT AMPLIFIERS

E2C-JC4AP

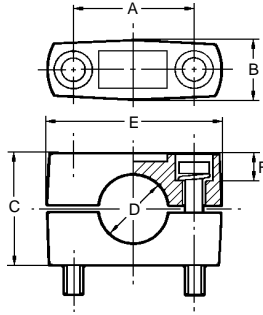


E2C-WH4AF



Note: When E2C-WH4AF amplifier is connected to S3D8 sensor controller, using the E99-C connector supplied, the amplifier is powered by the controller and the output is connected to the sensor controller.

OPTIONAL MOUNTING BRACKETS FOR STANDARD SIZE THREADED SENSORS

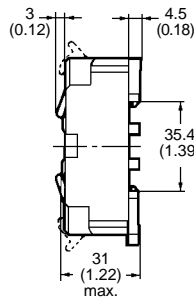
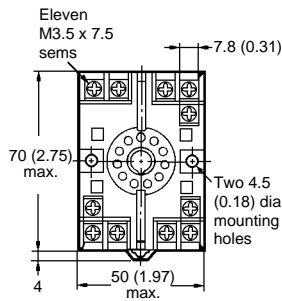


| Part number | Drawing dimensions | | | | | | Applicable sensor models |
|-------------|--------------------|------------------|-----------|----------------|----------------|--------------|--------------------------|
| | A | B | C | D | E | F | |
| Y92E-B8 | 18 (0.71) ± 0.2 | 10 (0.39) max. | 18 (0.71) | 8 (0.31) dia. | 28 (1.10) max. | M4 x 20 bolt | E2C-X1R5A |
| Y92E-B12 | 24 (0.94) ± 0.2 | 12.5 (0.49) max. | 20 (0.79) | 12 (0.47) dia. | 37 (1.46) max. | M4 x 25 bolt | E2C-X2A |
| Y92E-B18 | 32 (1.26) ± 0.2 | 17 (0.67) max. | 30 (1.18) | 18 (0.71) dia. | 47 (1.85) max. | M5 x 32 bolt | E2C-X5A |
| Y92E-B30 | 45 (1.77) ± 0.2 | 17 (0.67) max. | 50 (1.97) | 30 (1.18) dia. | 60 (2.36) max. | M5 x 50 bolt | E2C-X10A |

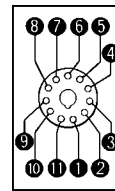
SOCKETS FOR AMPLIFIERS

11-Pin Sockets for E2C-AK4A Amplifier

P2CF-11 Bottom surface or track mounting socket

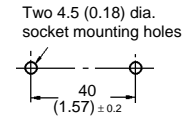


Terminal arrangement

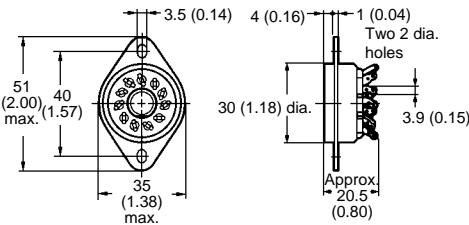


(Top view)

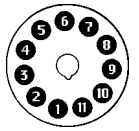
Mounting holes



PL11 Panel mounting socket

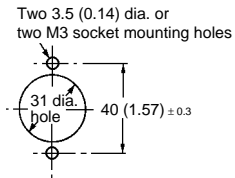


Terminal arrangement

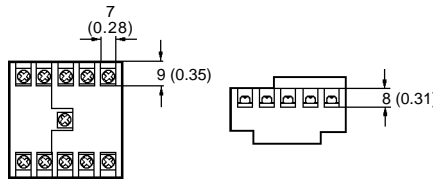
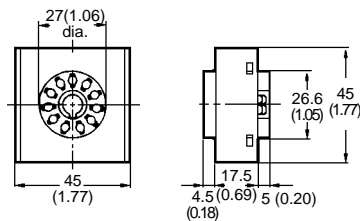


(Bottom view)

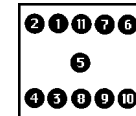
Mounting holes



P3G-11 Back mounting socket



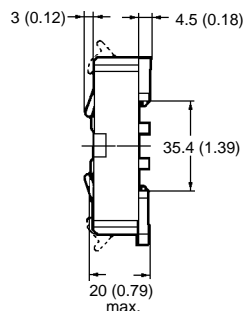
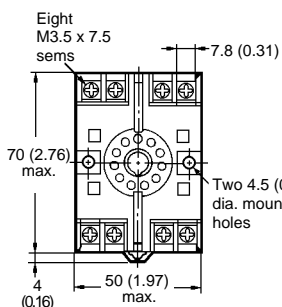
Terminal arrangement



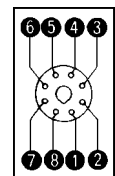
(Bottom view)

8-Pin Sockets for E2C-AM4A Amplifier

P2CF-08 Bottom surface or track mounting socket

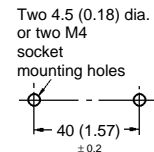


Terminal arrangement



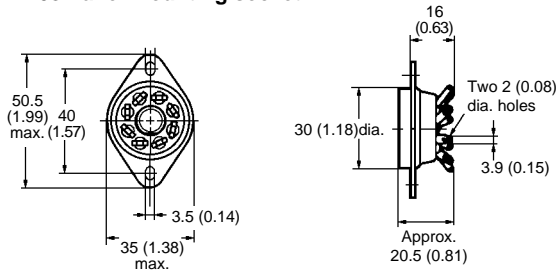
(Top view)

Mounting holes

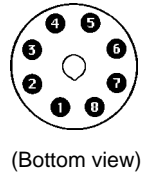


8-Pin Sockets for E2C-AM4A Amplifier (continued)

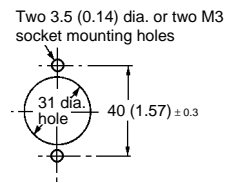
PL08 Panel mounting socket



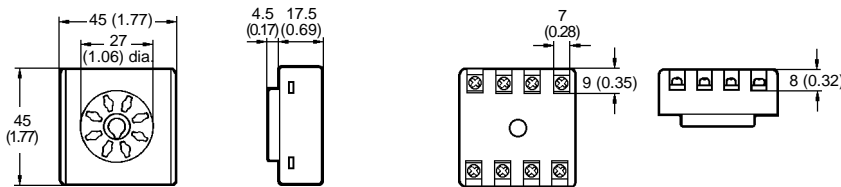
Terminal arrangement



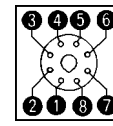
Mounting holes



P3G-08 Back mounting socket

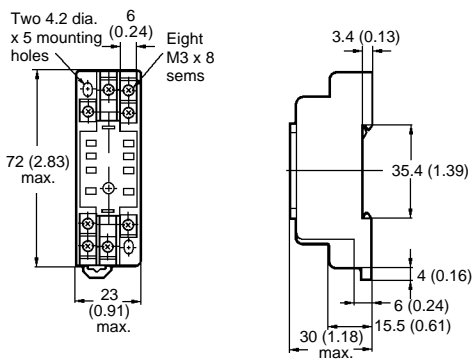


Terminal arrangement

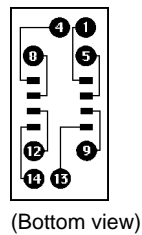


Sockets for E2C-G□4□ Amplifiers

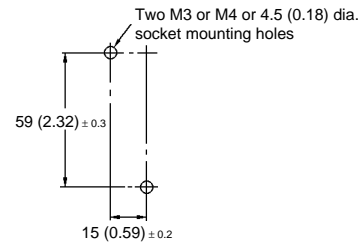
PYF08A-E Bottom surface or track mounting socket



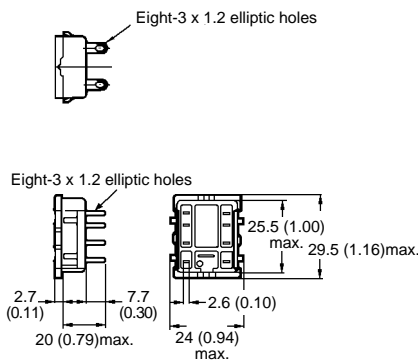
Terminal arrangement



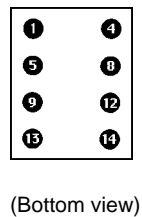
Mounting holes



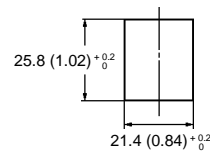
PY08 Panel mounting socket



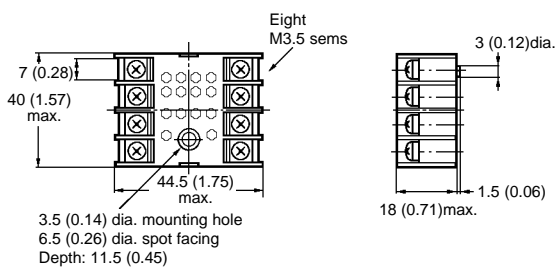
Terminal arrangement



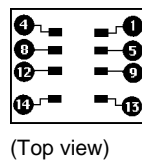
Panel cutout



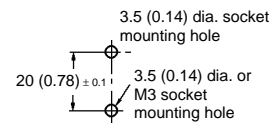
PYF08M Bottom surface mounting socket



Terminal arrangement



Mounting holes

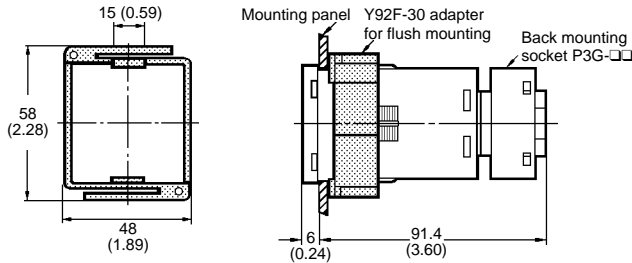


■ PANEL MOUNTING ADAPTERS

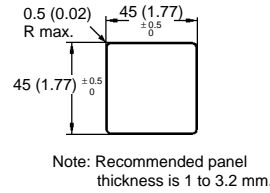
For E2C-A□4A Amplifiers

Y92F-30 Mounting adapter

Adapter installs behind the panel. It is ideal for side by side installation. Use P2CF-□□ sockets

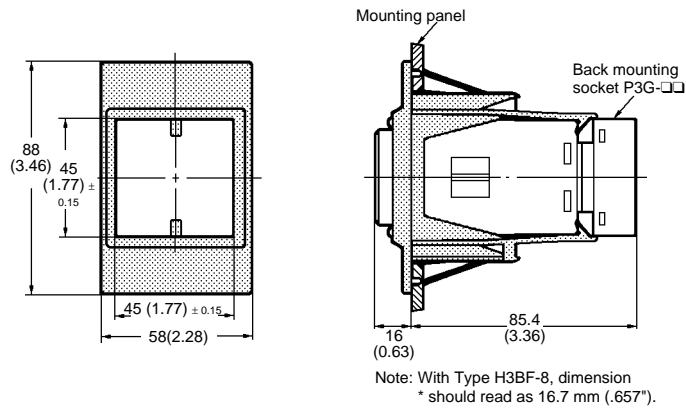


Panel cutout

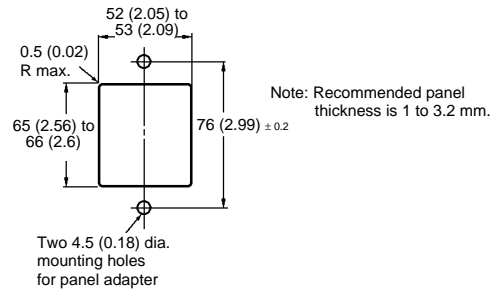


Y92F-70 Mounting adapter

Charcoal gray panel adapter installs through panel front. Amplifier face fits bezel, rear of amplifier clips to adapter. Use P3G-□□ sockets.



Panel cutout



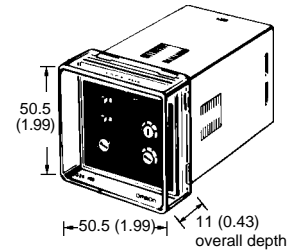
■ PROTECTIVE COVERS

For E2C-A□4A Amplifiers

Y92A-48 Hard plastic cover, Y92A-48D Soft plastic cover

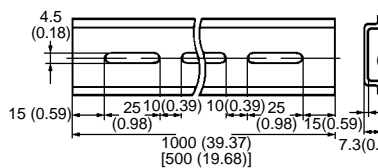
Hard plastic cover Y92A-48 and soft plastic cover Y92A-48D snap onto the front of the amplifier to protect it from dust, dirt and water drip. The Y92A-48

hard plastic cover projects 4 mm from the front of the amplifier. Y92A-48D soft plastic cover fits snugly over the front.

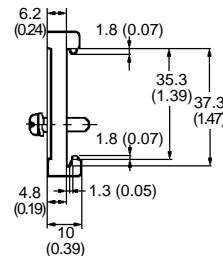
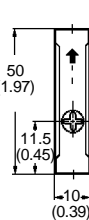


■ MOUNTING TRACK AND ACCESSORIES

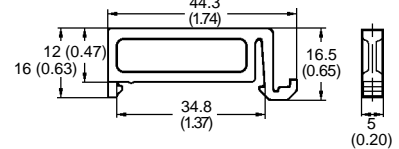
PPF-100N/PPF-50N DIN Rail



PPF-M End Plate



PPF-S Spacer



OMRON

OMRON ELECTRONICS LLC

One East Commerce Drive
Schaumburg, IL 60173

1-800-55-OMRON

Cat. No. CEDSAX4

11/01

OMRON ON-LINE

Global - <http://www.omron.com>

USA - <http://www.omron.com/oei>

Canada - <http://www.omron.com/oci>

Specifications subject to change without notice.

OMRON CANADA, INC.

885 Milner Avenue
Scarborough, Ontario M1B 5V8

416-286-6465

Printed in the U.S.A.