

SMD Inductors(Coils) For Power Line(Wound, Magnetic Shielded)

Conformity to RoHS Directive

SLF Series SLF10165

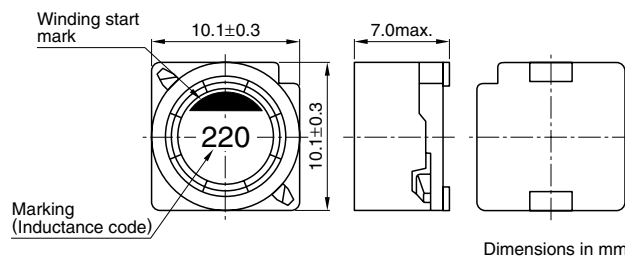
FEATURES

- Miniature size
Mount area: 10.1×10.1mm
Height: 7mm max.
- Generic use for portable DC to DC converter line.
- High magnetic shield construction should actualize high resolution for EMC protection.
- Available for automatic mounting in tape and reel package.
- The products do not contain lead and support lead-free soldering.

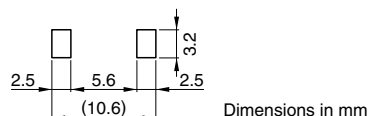
APPLICATIONS

TVs, PDPs, notebook PCs, portable DVD players, terminal adapters, amusement games, LCD monitors, digital audios, etc.

SHAPES AND DIMENSIONS



RECOMMENDED PC BOARD PATTERN



ELECTRICAL CHARACTERISTICS

| Part No. | Inductance (μH) | Inductance tolerance(%) | Test frequency (kHz) | DC resistance (mΩ) | Rated current(A)* | |
|----------------------|-----------------|-------------------------|----------------------|--------------------|---------------------------------|--------------------------------|
| | | | | | Based on inductance change typ. | Based on temperature rise typ. |
| SLF10165T-1R5N6R83PF | 1.5 | ±30 | 100 | 6.7±30% | 10.7 | 6.8 |
| SLF10165T-2R2N6R33PF | 2.2 | ±30 | 100 | 8.4±30% | 8.9 | 6.3 |
| SLF10165T-3R3N5R83PF | 3.3 | ±30 | 100 | 9.6±30% | 7.8 | 5.8 |
| SLF10165T-4R7N4R73PF | 4.7 | ±30 | 100 | 11.7±30% | 6.1 | 4.7 |
| SLF10165T-6R8N4R33PF | 6.8 | ±30 | 100 | 14±30% | 4.6 | 4.3 |
| SLF10165T-100M3R83PF | 10 | ±20 | 100 | 18.5±20% | 4.1 | 3.8 |
| SLF10165T-150M3R13PF | 15 | ±20 | 100 | 27±20% | 3.1 | 3.1 |
| SLF10165T-220M2R43PF | 22 | ±20 | 100 | 44.8±20% | 2.7 | 2.4 |

* Rated current: Value obtained when current flows and the temperature has risen to 30°C or when DC current flows and the nominal value of inductance has fallen by 10%, whichever is smaller.

- Operating temperature range: -40 to +105°C (Including self-temperature rise)

• Conformity to RoHS Directive: This means that, in conformity with EU Directive 2002/95/EC, lead, cadmium, mercury, hexavalent chromium, and specific bromine-based flame retardants, PBB and PBDE, have not been used, except for exempted applications.

• All specifications are subject to change without notice.