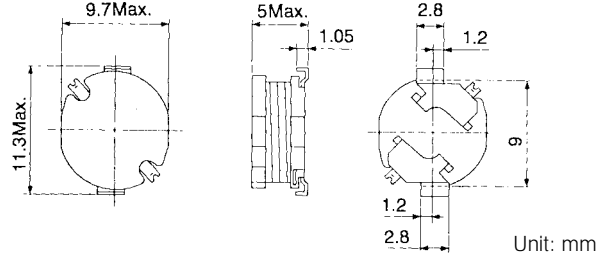


TYPE D10F

For Reflow Soldering

Frequency Range: 1kHz ~ 1MHz

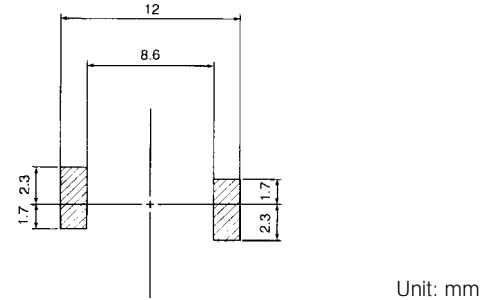
Inductance Range: 10 ~ 1500μH



Features

- Low profile SMD Type (5mm high)
- Suitable for large current
- Suitable for reflow soldering
- Available on tape and reel for automatic insertion

Recommended patterns:



STANDARD PARTS SELECTION GUIDE

(1) Inductance is measured by LCR-meter 4284A (HP) or equivalent.
(2) DC resistance is measured by Digital Multimeter TR6871 (Advantest) or equivalent.

(3) Maximum allowable DC current is that which causes a 10% inductance reduction from the initial value, or coil temperature to rise by 40°C, whichever is smaller. (Reference ambient temperature 20°C).

TYPE D10F

| TOKO Part Number | Inductance ⁽¹⁾ L (μH) | Tolerance | Test Frequency (kHz) | DC Resistance ⁽²⁾ (Ω) max. | Rated DC Current ⁽³⁾ (A) max. |
|------------------|----------------------------------|-----------|----------------------|---------------------------------------|--|
| A814AY-100M=P3 | 10 | ±20% | 100 | 0.047 | 2.60 |
| A814AY-120M=P3 | 12 | ±20% | 100 | 0.050 | 2.48 |
| A814AY-150M=P3 | 15 | ±20% | 100 | 0.058 | 2.27 |
| A814AY-180M=P3 | 18 | ±20% | 100 | 0.067 | 2.15 |
| A814AY-220M=P3 | 22 | ±20% | 100 | 0.075 | 2.00 |
| A814AY-270M=P3 | 27 | ±20% | 100 | 0.087 | 1.84 |
| A814AY-330M=P3 | 33 | ±20% | 100 | 0.095 | 1.72 |
| A814AY-390M=P3 | 39 | ±20% | 100 | 0.12 | 1.58 |
| A814AY-470K=P3 | 47 | ±10% | 100 | 0.15 | 1.44 |
| A814AY-560K=P3 | 56 | ±10% | 100 | 0.18 | 1.28 |
| A814AY-680K=P3 | 68 | ±10% | 100 | 0.20 | 1.20 |
| A814AY-820K=P3 | 82 | ±10% | 100 | 0.23 | 1.09 |
| A814AY-101K=P3 | 100 | ±10% | 100 | 0.27 | 1.05 |
| A814AY-121K=P3 | 120 | ±10% | 100 | 0.33 | 0.92 |
| A814AY-151K=P3 | 150 | ±10% | 100 | 0.40 | 0.80 |
| A814AY-181K=P3 | 180 | ±10% | 100 | 0.53 | 0.73 |
| A814AY-221K=P3 | 220 | ±10% | 100 | 0.60 | 0.69 |
| A814AY-271K=P3 | 270 | ±10% | 100 | 0.84 | 0.60 |
| A814AY-331K=P3 | 330 | ±10% | 100 | 1.00 | 0.53 |
| A814AY-391K=P3 | 390 | ±10% | 100 | 1.09 | 0.49 |
| A814AY-471K=P3 | 470 | ±10% | 100 | 1.25 | 0.46 |
| A814AY-561K=P3 | 560 | ±10% | 100 | 1.63 | 0.41 |
| A814AY-681K=P3 | 680 | ±10% | 100 | 1.90 | 0.38 |
| A814AY-821K=P3 | 820 | ±10% | 100 | 2.44 | 0.34 |
| A814AY-102K=P3 | 1000 | ±10% | 100 | 2.80 | 0.31 |
| A814AY-122K=P3 | 1200 | ±10% | 100 | 3.67 | 0.27 |
| A814AY-152K=P3 | 1500 | ±10% | 100 | 4.37 | 0.25 |

Note: =P3 is added to each part number to indicate tape and reel packaging.

⚠ Please read PRECAUTIONS and NOTES sections of this catalog for safe operation. This catalog contains consumer grade specifications only. Detailed technical specifications are available upon request.