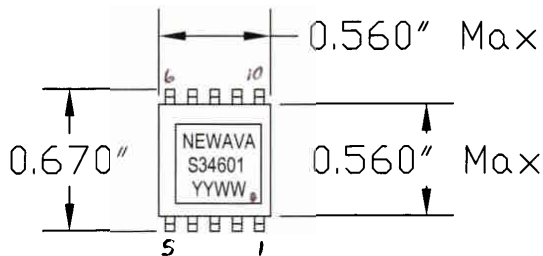
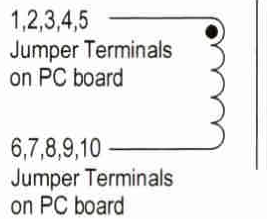
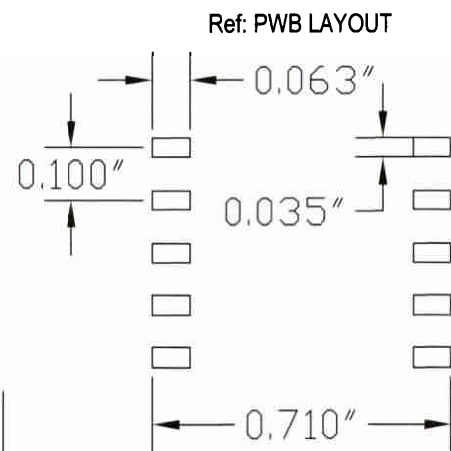


EP13 LM259X Inductor  
100 uHy 1.50 ADC



MECHANICALS: 0.500" Max Height  
0.560" Max Width of Body  
0.560" Max Length of Body  
Coplanarity of +/- 0.004" Across all Leads  
All pins may not be used.



ELECTRICAL SPECS:

- 1: INDUCTANCE: @ 10 kHz, 0.1 Vrms  
(1 thru 5 to 6 thru 10) = 100 - 130 uHy
- 2: DCRs:  
(1 thru 5 to 6 thru 10) = 0.090 Ohms Max.
- 3: SRF: 2.0 MHz Min
- 4: HIPOT: 500 VDC  
Winding to core (2 Sec., 5 mA Max)

Specifications at room temperature of 25 C.

A	2/28/03		KAM	Production Release
REV.	DATE	ECN	BY	DESCRIPTION
TOLERANCES UNLESS OTHERWISE SPECIFIED				<b>Newava Tech.</b> Watertown, SD 57201 605-886-0264
.XXX	.XX	ANGLE		
+ -	+ -	+ -		<b>100 uHy Inductor</b> <b>1.50 ADC</b>
DRAWN:		DATE	SCALE	MODEL
CHECKED: -				DRAWING NO.
APPROVED: -			NEXT ASSY:	REV.
THIS PRINT MUST NOT BE COPIED IN WHOLE OR IN PART OR USED DETRIMENTALLY TO OUR INTEREST				SHEET 1 OF 1