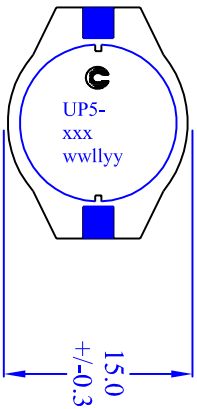
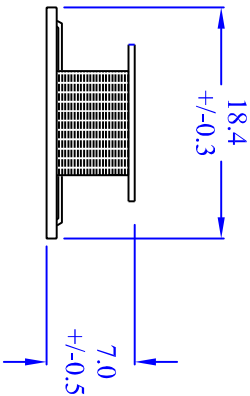


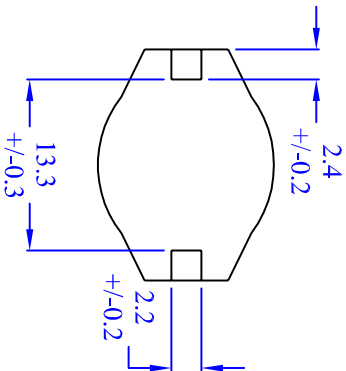
TOP VIEW



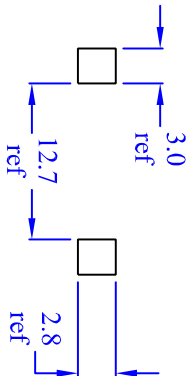
FRONT VIEW



BOTTOM VIEW

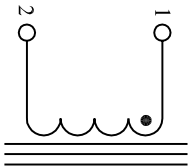


RECOMMENDED PCB LAYOUT

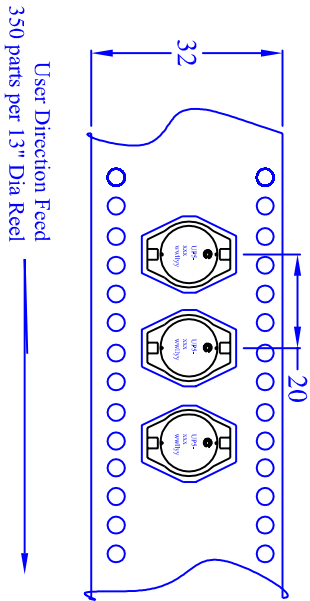


Component Side

SCHEMATIC



TAPE AND REEL ORIENTATION



Notes:

1) All Dimensions are in millimeters unless otherwise specified.

2) Stamp as Shown above--

Line 1 - "C" logo

Line 2- UP5

Line 3- xxx (xxx=inductance value per family chart)

Line 4- wwllly

ww=(week date code), ll=(location), yy=(year)

Cooper Electronic Technologies

3601 Quantum Boulevard, Boynton Beach, FL 33426

Unipac 5 (UP5) Inductor Line
SMD, 7.5mm max ht, Drum core/header

| Size | Drawing Number: | UP5 Inductor Line |
|------|-----------------|-------------------|
| A | Revision Level: | X1 |
| | | Sheet 3 of 4 |