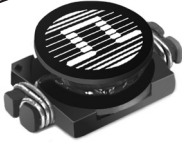






# SMT POWER INDUCTORS

## Unshielded Drum Core - P0770NL Series



-  **Height:** 2.9mm Max
-  **Footprint:** 6.6mm x 4.5mm Max
-  **Current Rating:** up to 2.9A
-  **Inductance Range:** 1.0μH to 220μH

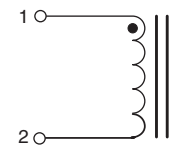
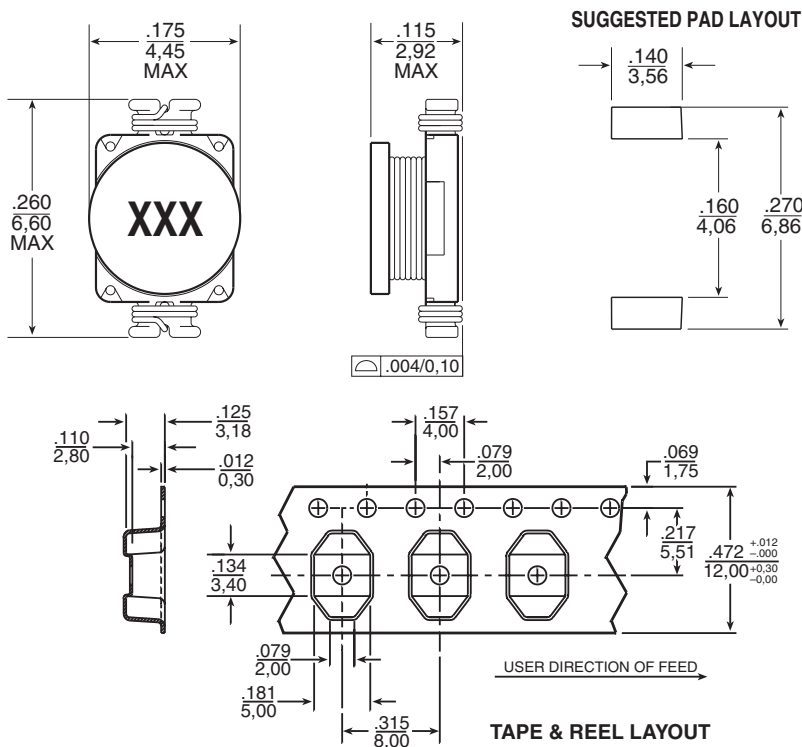
### Electrical Specifications @ 25°C — Operating Temperature -40°C to +130°C

| Part <sup>6,7</sup><br>Number | Inductance<br>@ I <sub>PK</sub> A <sub>DC</sub><br>(μH ± 20%) | I <sub>rated</sub> <sup>5</sup><br>(A) | DCR (MAX)<br>(mΩ) | Saturation Current<br>(A) @ 25°C | Heating Current<br>(A) |
|-------------------------------|---|--|-------------------|----------------------------------|------------------------|
| P0770.102NL                   | 1.0   | 2.90                                   | 50                | 2.90                             | 2.90                   |
| P0770.152NL                   | 1.5   | 2.60                                   | 50                | 2.60                             | 2.80                   |
| P0770.222NL                   | 2.2   | 2.30                                   | 70                | 2.30                             | 2.40                   |
| P0770.332NL                   | 3.3   | 2.00                                   | 80                | 2.00                             | 2.00                   |
| P0770.472NL                   | 4.7   | 1.50                                   | 90                | 1.50                             | 1.50                   |
| P0770.682NL                   | 6.8   | 1.20                                   | 130               | 1.20                             | 1.40                   |
| P0770.103NL                   | 10  | 1.10                                   | 160               | 1.10                             | 1.10                   |
| P0770.153NL                   | 15  | 0.90                                   | 230               | 0.90                             | 1.20                   |
| P0770.223NL                   | 22  | 0.70                                   | 370               | 0.70                             | 0.80                   |
| P0770.333NL                   | 33  | 0.58                                   | 510               | 0.58                             | 0.60                   |
| P0770.473NL                   | 47  | 0.50                                   | 640               | 0.50                             | 0.50                   |
| P0770.683NL                   | 68  | 0.40                                   | 860               | 0.40                             | 0.40                   |
| P0770.104NL                   | 100   | 0.30                                   | 1270              | 0.31                             | 0.30                   |
| P0770.154NL                   | 150   | 0.25                                   | 2000              | 0.27                             | 0.2                    |
| P0770.224NL                   | 220   | 0.20                                   | 3110              | 0.22                             | 0.20                   |

- NOTES:**
- The temperature of the component (ambient plus temperature rise) must be within the specified operating temperature range.
  - Inductance tested at 100kHz, 10 mV<sub>RMS</sub>
  - Inductance drop = 10% typical at the Saturation Current
  - ΔT = 15°C rise typical at the Heating Current
  - The rated current is the lower of the saturation or heating current.
  - Optional Tape & Reel packaging can be ordered by adding a "T" suffix to the part no. (i.e. P0770.102NL becomes P0770.102NLT). Pulse complies to industry standard tape and reel specification EIA481.
  - The "NL" suffix indicates an RoHS-compliant part number. Non-NL suffixed parts are not necessarily RoHS compliant, but are electrically and mechanically equivalent to NL versions. If a part number does not have the "NL" suffix, but an RoHS compliant version is required, please contact Pulse for availability.

### Mechanical

### Schematic



Weight . . . . . 0.2 grams  
Tape & Reel . . . . . 2500/reel

Dimensions: Inches  
mm  
Unless otherwise specified,  
all tolerances are ± .010  
0,25