



Features

- Formerly *JW.Miller* model
- Current rating up to 200 mA
- Inductance range: 100 μ H to 15,000 μ H
- High Q
- RoHS compliant*

Applications

- DC/DC converters
- Power supplies
- Desktop notebooks
- Output chokes

RL262 Series - Radial Lead RF Choke

Electrical Specifications (@ 25 °C)

Part Number	Inductance (μ H)	Tol.	Q (Min.)	Test Frequency		SRF (MHz) Typ.	DCR (Ω) Max.	I dc (mA)
				L	Q			
RL262-101J-RC	100	$\pm 5\%$	60	796 KHz	796 KHz	6.1	2.0	200
RL262-121J-RC	120	$\pm 5\%$	60	796 KHz	796 KHz	5.5	3.0	200
RL262-151J-RC	150	$\pm 5\%$	60	796 KHz	796 KHz	5.0	2.0	200
RL262-181J-RC	180	$\pm 5\%$	60	796 KHz	796 KHz	4.7	3.0	200
RL262-221J-RC	220	$\pm 5\%$	60	796 KHz	796 KHz	4.5	3.0	150
RL262-271J-RC	270	$\pm 5\%$	60	796 KHz	796 KHz	4.1	3.0	150
RL262-331J-RC	330	$\pm 5\%$	60	796 KHz	796 KHz	3.8	4.0	150
RL262-391J-RC	390	$\pm 5\%$	60	796 KHz	796 KHz	3.5	4.0	100
RL262-471J-RC	470	$\pm 5\%$	60	796 KHz	796 KHz	3.2	5.0	100
RL262-561J-RC	560	$\pm 5\%$	60	796 KHz	796 KHz	2.9	6.0	100
RL262-681J-RC	680	$\pm 5\%$	60	796 KHz	796 KHz	2.7	6.0	100
RL262-821J-RC	820	$\pm 5\%$	60	796 KHz	796 KHz	2.3	7.0	50
RL262-102J-RC	1000	$\pm 5\%$	80	252 KHz	252 KHz	2.1	9.0	50
RL262-122J-RC	1200	$\pm 5\%$	80	252 KHz	252 KHz	1.9	9.0	50
RL262-152J-RC	1500	$\pm 5\%$	80	252 KHz	252 KHz	1.8	11	50
RL262-182J-RC	1800	$\pm 5\%$	80	252 KHz	252 KHz	1.6	12	50
RL262-222J-RC	2200	$\pm 5\%$	80	252 KHz	252 KHz	1.5	14	50
RL262-272J-RC	2700	$\pm 5\%$	80	252 KHz	252 KHz	1.4	15	50
RL262-332J-RC	3300	$\pm 5\%$	80	252 KHz	252 KHz	0.9	25	40
RL262-392J-RC	3900	$\pm 5\%$	80	252 KHz	252 KHz	0.9	30	40
RL262-472J-RC	4700	$\pm 5\%$	80	252 KHz	252 KHz	0.8	32	40
RL262-562J-RC	5600	$\pm 5\%$	80	252 KHz	252 KHz	0.7	36	30
RL262-682J-RC	6800	$\pm 5\%$	80	252 KHz	252 KHz	0.7	40	30
RL262-822J-RC	8200	$\pm 5\%$	80	252 KHz	252 KHz	0.6	45	30
RL262-103J-RC	10,000	$\pm 5\%$	60	79.6 KHz	79.6 KHz	0.6	55	20
RL262-123J-RC	12,000	$\pm 5\%$	60	79.6 KHz	79.6 KHz	0.5	65	20
RL262-153J-RC	15,000	$\pm 5\%$	60	79.6 KHz	79.6 KHz	0.5	80	20

General Specifications

Rated Current Inductance drop 10 %
 Operating Temperature -55 °C to +105 °C
 Storage Temperature -55 °C to +105 °C

Materials

Core Material Ferrite
 Wire Enameled copper
 Terminal Coating Sn

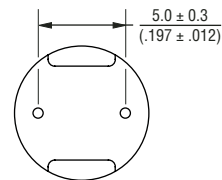
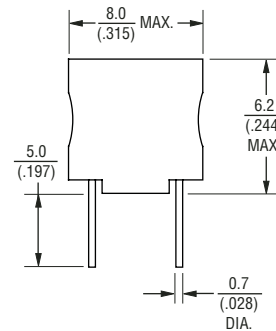
Marking

..... Value code on side of inductor

Packaging

Standard 100 pcs. per bag

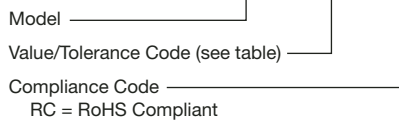
Product Dimensions



DIMENSIONS: $\frac{\text{MM}}{\text{(INCHES)}}$

How To Order

RL262 - 102J - RC



Example:
 RL262-102J-RC = 1000 μ H, $\pm 5\%$

Electrical Schematic

