



Features

- Formerly *JW.Miller* model
- Current rating up to 3.71 A
- Inductance range: 1 μH to 1000 μH
- RoHS compliant*

Applications

- DC/DC converters
- Power supplies
- Desktop notebooks
- Output chokes

RL822 Series - Radial Lead RF Choke

Electrical Specifications (@ 25 °C)

Part Number	Inductance (μH)	Tol.	Q	Test Frequency		SRF (MHz) Min.	DCR (Ω) Max.	I dc (A)
				L	Q			
RL822-1R0K-RC	1.0	$\pm 10\%$	20	1.0 KHz	7.96 MHz	150	0.013	3.71
RL822-1R5K-RC	1.5	$\pm 10\%$	20	1.0 KHz	7.96 MHz	130	0.016	3.32
RL822-2R2K-RC	2.2	$\pm 10\%$	20	1.0 KHz	7.96 MHz	100	0.021	3.15
RL822-3R3K-RC	3.3	$\pm 10\%$	20	1.0 KHz	7.96 MHz	79	0.025	2.66
RL822-4R7K-RC	4.7	$\pm 10\%$	20	1.0 KHz	7.96 MHz	51	0.030	2.27
RL822-6R8K-RC	6.8	$\pm 10\%$	20	1.0 KHz	7.96 MHz	29	0.035	2.10
RL822-100K-RC	10	$\pm 10\%$	50	1.0 KHz	2.52 MHz	14	0.045	1.96
RL822-120K-RC	12	$\pm 10\%$	50	1.0 KHz	2.52 MHz	13	0.050	1.82
RL822-150K-RC	15	$\pm 10\%$	40	1.0 KHz	2.52 MHz	12	0.058	1.75
RL822-180K-RC	18	$\pm 10\%$	40	1.0 KHz	2.52 MHz	11	0.061	1.54
RL822-220K-RC	22	$\pm 10\%$	40	1.0 KHz	2.52 MHz	9.2	0.070	1.29
RL822-270K-RC	27	$\pm 10\%$	30	1.0 KHz	2.52 MHz	8.5	0.080	1.22
RL822-330K-RC	33	$\pm 10\%$	30	1.0 KHz	2.52 MHz	7.8	0.090	1.17
RL822-390K-RC	39	$\pm 10\%$	30	1.0 KHz	2.52 MHz	6.9	0.10	1.14
RL822-470K-RC	47	$\pm 10\%$	30	1.0 KHz	2.52 MHz	6.5	0.17	0.79
RL822-560K-RC	56	$\pm 10\%$	30	1.0 KHz	2.52 MHz	5.4	0.20	0.76
RL822-680K-RC	68	$\pm 10\%$	30	1.0 KHz	2.52 MHz	4.9	0.22	0.70
RL822-820K-RC	82	$\pm 10\%$	30	1.0 KHz	2.52 MHz	4.1	0.25	0.67
RL822-101K-RC	100	$\pm 10\%$	20	1.0 KHz	796 KHz	3.7	0.28	0.58
RL822-121K-RC	120	$\pm 10\%$	20	1.0 KHz	796 KHz	3.4	0.32	0.56
RL822-151K-RC	150	$\pm 10\%$	20	1.0 KHz	796 KHz	3.2	0.54	0.42
RL822-181K-RC	180	$\pm 10\%$	20	1.0 KHz	796 KHz	2.8	0.60	0.40
RL822-221K-RC	220	$\pm 10\%$	20	1.0 KHz	796 KHz	2.7	0.68	0.38
RL822-271K-RC	270	$\pm 10\%$	20	1.0 KHz	796 KHz	2.4	0.80	0.35
RL822-331K-RC	330	$\pm 10\%$	20	1.0 KHz	796 KHz	2.3	0.90	0.33
RL822-391K-RC	390	$\pm 10\%$	20	1.0 KHz	796 KHz	2.1	1.20	0.28
RL822-471K-RC	470	$\pm 10\%$	20	1.0 KHz	796 KHz	1.9	1.37	0.25
RL822-561K-RC	560	$\pm 10\%$	20	1.0 KHz	796 KHz	1.8	1.53	0.23
RL822-681K-RC	680	$\pm 10\%$	20	1.0 KHz	796 KHz	1.6	2.00	0.21
RL822-821K-RC	820	$\pm 10\%$	20	1.0 KHz	796 KHz	1.5	2.70	0.18
RL822-102K-RC	1000	$\pm 10\%$	50	1.0 KHz	252 KHz	1.3	2.96	0.16

General Specifications

Rated Current Inductance drop 10 %
 Operating Temperature -55 °C to +105 °C
 Storage Temperature -55 °C to +105 °C

Materials

Core Material Ferrite
 Wire Enamelled copper
 Terminal Coating Sn

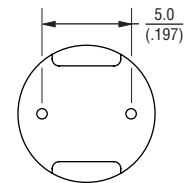
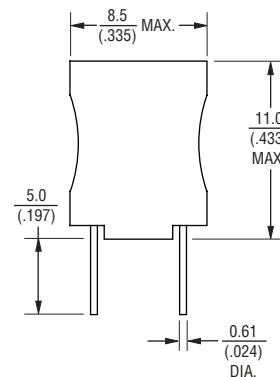
Marking

..... Value code on side of inductor

Packaging

Standard 100 pcs. per bag

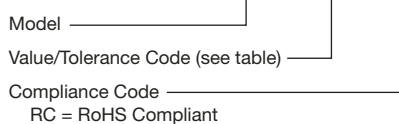
Product Dimensions



DIMENSIONS: $\frac{\text{MM}}{(\text{INCHES})}$

How To Order

RL822 - 102K - RC



Example:
 RL822-102K-RC = 1000 μH , $\pm 10\%$

Electrical Schematic



REV. 02/09

*RoHS Directive 2002/95/EC Jan 27 2003 including Annex.
 Specifications are subject to change without notice.
 Customers should verify actual device performance in their specific applications