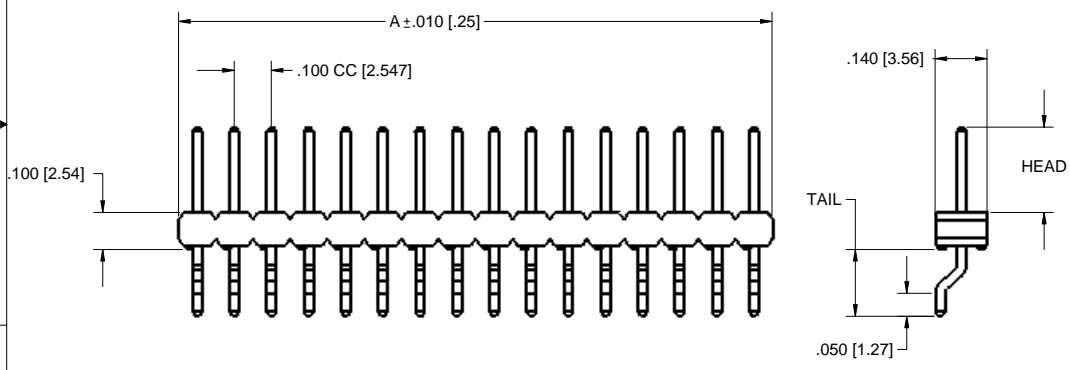


PLATING SPECIFICATIONS		TERMINAL
A	.000015" GOLD	.0001" TINLEAD
D	.00003" GOLD	.00003" GOLD OVERALL
G	.00001" GOLD	.000005" GOLD
M	.00003" GOLD	.00001" GOLD OVERALL
N	.00005" GOLD	.0001" TINLEAD
O	.00003" GOLD	.0001" TINLEAD
P	GOLD FLASH	GOLD FLASH
R	.00002" GOLD	.0001" TINLEAD
S	.00001" GOLD	.00001" GOLD OVERALL
T	.0001" TINLEAD	.0001" TINLEAD OVERALL
V	.00003" GOLD	.000005" GOLD
W	GOLD FLASH	.0001" TINLEAD
X	.00003" GOLD	.0001" TINLEAD
Y	.00003" GOLD	.000005" GOLD
Z	.00001" GOLD	.0001" TINLEAD

TERMINATION TYPES		
P/N CODE	HEAD DIMENSIONS	TAIL DIMENSIONS
BS	0.230 [5.84]	.180 [4.57]
GS	0.318 [8.08]	.180 [4.57]

PART NUMBER	BODY NUMBER	A
G_C01S_N-M89	H01R-A360	0.100 [2.54]
G_C02S_N-M89	H02R-A360	0.200 [5.08]
G_C03S_N-M89	H03R-A360	0.300 [7.62]
G_C04S_N-M89	H04R-A360	0.400 [10.16]
G_C05S_N-M89	H05R-A360	0.500 [12.70]
G_C06S_N-M89	H06R-A360	0.600 [15.24]
G_C07S_N-M89	H07R-A360	0.700 [17.78]
G_C08S_N-M89	H08R-A360	0.800 [20.32]
G_C09S_N-M89	H09R-A360	0.900 [22.86]
G_C10S_N-M89	H10R-A360	1.000 [25.40]
G_C11S_N-M89	H11R-A360	1.100 [27.94]
G_C12S_N-M89	H12R-A360	1.200 [30.48]
G_C13S_N-M89	H13R-A360	1.300 [33.02]
G_C14S_N-M89	H14R-A360	1.400 [35.56]
G_C15S_N-M89	H15R-A360	1.500 [38.10]
G_C16S_N-M89	H16R-A360	1.600 [40.64]
G_C17S_N-M89	H17R-A360	1.700 [43.18]
G_C18S_N-M89	H18R-A360	1.800 [45.72]
G_C19S_N-M89	H19R-A360	1.900 [48.26]
G_C20S_N-M89	H20R-A360	2.000 [50.80]
G_C21S_N-M89	H21R-A360	2.100 [53.34]
G_C22S_N-M89	H22R-A360	2.200 [55.88]
G_C23S_N-M89	H23R-A360	2.300 [58.42]
G_C24S_N-M89	H24R-A360	2.400 [60.96]
G_C25S_N-M89	H25R-A360	2.500 [63.50]
G_C26S_N-M89	H26R-A360	2.600 [66.04]
G_C27S_N-M89	H27R-A360	2.700 [68.58]
G_C28S_N-M89	H28R-A360	2.800 [71.12]
G_C29S_N-M89	H29R-A360	2.900 [73.66]
G_C30S_N-M89	H30R-A360	3.000 [76.20]
G_C31S_N-M89	H31R-A360	3.100 [78.74]
G_C32S_N-M89	H32R-A360	3.200 [81.28]
G_C33S_N-M89	H33R-A360	3.300 [83.82]
G_C34S_N-M89	H34R-A360	3.400 [86.36]
G_C35S_N-M89	H35R-A360	3.500 [88.90]
G_C36S_N-M89	H36R-A360	3.600 [91.44]

*ALL CONTACT PINS HAVE A .00005" NICKEL UNDERPLATE.



SAMPLE PART NUMBER: GTC16SBSN-M89

PLATING SPECIFICATION — TERMINATION TYPE



PROPRIETARY AND CONFIDENTIAL
THIS DRAWING AND DESIGN IS THE PROPERTY OF SULLINS ELECTRONICS. IT MAY NOT BE USED FOR ANY PURPOSES OTHER THAN BY THE OWNER. SULLINS ELECTRONICS DOES NOT AUTHORIZE THE REPRODUCTION OR CONVEYANCE OF ANY INFORMATION CONTAINED HEREIN.

REV.	ECO NO.	DESCRIPTION	DATE	BY	APP'VD
A	62	ORIGINAL RELEASE	9/24/03	JFW	AJT

UNLESS OTHERWISE SPECIFIED: DIMENSIONS ARE IN INCHES FRACTIONS & 1/32 ANGLES & 1°	DRAWN 9/24/03 JWHITE	DATE 9/24/03	NAME AJT
TWO PLACE DECIMAL # 00 THREE PLACE DECIMAL # 000 FOUR PLACE DECIMAL # 0000	CHECKED	DATE	NAME
REVISIONS: GEOMETRIC TOLERANCING PER	COMMENTS	PART NO./DESCRIPTION	
MATERIAL	NOTED	HEADERS G_C_S_N-M89	
FINISH	N/A	SIZE C	DWG. NO. 10060
NEXT ASSY	USED ON	SCALE: 5:1	REV A
APPLICATION	DO NOT SCALE DRAWING	SHEET 1 OF 1	