

NOTES:

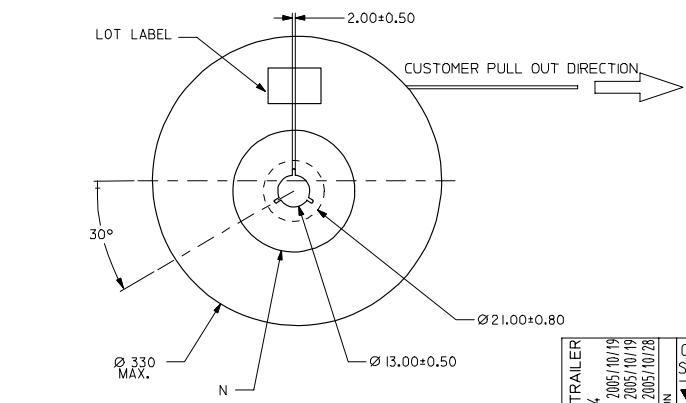
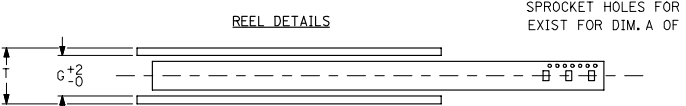
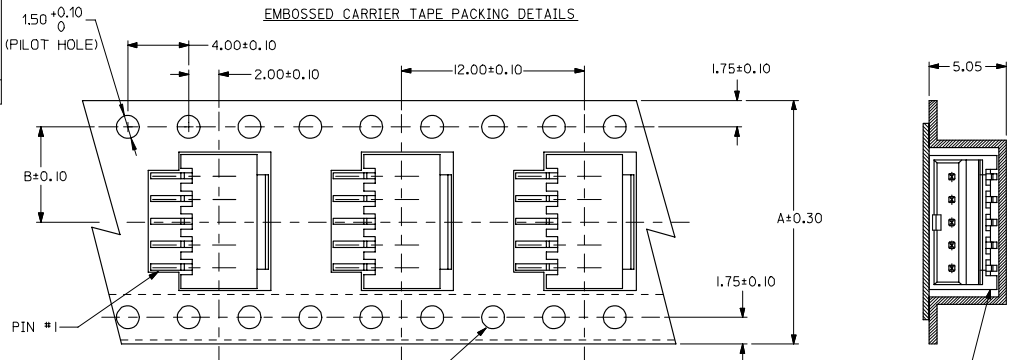
- MATERIALS:
HOUSING : GLASS-FILLED NYLON (PA46), UL RATED 94V-0,
COLOR: BEIGE
PINS: BRASS ALLOY, C26000
- PLATING: 2.54MM MIN. TIN/LEAD OR TIN OVER 1.27MM MIN. NICKEL.
- DRAWING SHOWS PLUG WITH 5 CIRCUITS.
- HEADER TO BE USED WITH CRIMP HOUSING, P/N 87439
AND CRIMP TERMINAL, P/N 87421

UPDATE REVISION EC NO. S2005-0714 DRAWN BY DRANKSEE CHECKED BY CHIKOBILOW APPROVED BY PILLIM 2005/10/19 2005/10/19 2005/11/05 DESCRIPTION REV C1	QUALITY SYMBOLS	GENERAL TOLERANCES (UNLESS SPECIFIED)	DIMENSION STYLE	SCALE	DESIGN UNITS	THIRD ANGLE PROJECTION																		
	$\nabla=0$ $\nabla=0$	<table border="1"> <tr><th colspan="2">mm</th><th>INCH</th></tr> <tr><td>4 PLACES</td><td>± ---</td><td>± ---</td></tr> <tr><td>3 PLACES</td><td>± ---</td><td>± ---</td></tr> <tr><td>2 PLACES</td><td>± 0.20</td><td>± ---</td></tr> <tr><td>1 PLACE</td><td>± ---</td><td>± ---</td></tr> <tr><td colspan="2">ANGULAR</td><td>± 3 °</td></tr> </table>	mm		INCH	4 PLACES	± ---	± ---	3 PLACES	± ---	± ---	2 PLACES	± 0.20	± ---	1 PLACE	± ---	± ---	ANGULAR		± 3 °	MM ONLY	NTS	METRIC	
	mm		INCH																					
	4 PLACES	± ---	± ---																					
3 PLACES	± ---	± ---																						
2 PLACES	± 0.20	± ---																						
1 PLACE	± ---	± ---																						
ANGULAR		± 3 °																						
			DRAWN BY KCLING DATE 1994/04/08 CHECKED BY SKTOH DATE 1994/04/21 APPROVED BY ROYWONG DATE 1994/04/24			TITLE SALES DRAWING 1.50MM PITCH, W-T-B HEADER, R/A, SMT																		
		DRAFT WHERE APPLICABLE MUST REMAIN WITHIN DIMENSIONS	SEE TABLE			MOLEX MOLEX INCORPORATED MATERIAL NO. SD-87438-***31 DOCUMENT NO. SD-87438-***31 SHEET NO. 1 OF 3																		

10	9	8	7	6	5	4	3	2	1				
HOUSING COLOUR	LEAD FREE TERMINAL P/N	HEADER IN TUBE PACKING	HEADER IN TAPE & REEL	TIN/ LEAD TERMINAL P/N	HEADER IN TUBE PACKING	HEADER IN TAPE & REEL	STATUS	CKT SIZE	A	B	C	D	E
BIEGE	87438-8084	87438-0242	87438-0243	87438-8082	87438-0232	87438-0233	M	2	1.50	3.30	3.70	4.30	1.70
		87438-0342	87438-0343		87438-0332	87438-0333	M	3	3.00	4.80	5.20	5.80	3.20
		87438-0442	87438-0443		87438-0432	87438-0433	M	4	4.50	6.30	6.70	7.30	4.70
		87438-0542	87438-0543		87438-0532	87438-0533	M	5	6.00	7.80	8.20	8.80	6.20
		87438-0642	87438-0643		87438-0632	87438-0633	M	6	7.50	9.30	9.70	10.30	7.70
		87438-0742	87438-0743		87438-0732	87438-0733	M	7	9.00	10.80	11.20	11.80	9.20
		87438-0842	87438-0843		87438-0832	87438-0833	M	8	10.50	12.30	12.70	13.30	10.70
		87438-0942	87438-0943		87438-0932	87438-0933	M	9	12.00	13.80	14.20	14.80	12.20
		87438-1042	87438-1043		87438-1032	87438-1033	M	10	13.50	15.30	15.70	16.30	13.70
		87438-1142	87438-1143		87438-1132	87438-1133	M	11	15.00	16.80	17.20	17.80	15.20
		87438-1242	87438-1243		87438-1232	87438-1233	M	12	16.50	18.30	18.70	19.30	16.70
		87438-1342	87438-1343		87438-1332	87438-1333	M	13	18.00	19.80	20.20	20.80	18.20
		87438-1442	87438-1443		87438-1432	87438-1433	M	14	19.50	21.30	21.70	22.30	19.70
		87438-1542	87438-1543		87438-1532	87438-1533	M	15	21.00	22.80	23.20	23.80	21.20
LEAD FREE					TIN/LEAD								

UPDATE REVISION EC NO. S2005-0714 DRW:KSEE CHK:CHLOW APPR:PTLIM 2005/10/19 2005/10/19 2005/10/27	QUALITY SYMBOLS ▽=0 ▽=0	GENERAL TOLERANCES (UNLESS SPECIFIED)		DIMENSION STYLE MM ONLY		SCALE NTS	DESIGN UNITS METRIC	THIRD ANGLE PROJECTION	
		4 PLACES ± --- ± --- 3 PLACES ± --- ± --- 2 PLACES ± 0.20 ± --- 1 PLACE ± --- ± ---	mm INCH	DRAWN BY KCLING	DATE 1994/04/08	TITLE SALES DRAWING 1.50MM PTICH, W-T-B HEADER, R/A, SMT			
		ANGULAR ± 3 °		CHECKED BY SKTOH	DATE 1994/04/21	MOLEX INCORPORATED			
		DRAFT WHERE APPLICABLE MUST REMAIN WITHIN DIMENSIONS		APPROVED BY ROYWONG	DATE 1994/04/21	MATERIAL NO. SEE TABLE	DOCUMENT NO. SD-87438-***31	SHEET NO. 2 OF 3	

10	9	8	7	6	5	4	3	2	1
IS	44	20.20	100	44.40	50.40				
11, 12, 13, 14	32	14.20	100	32.40	38.40				
7, 8, 9, 10	24	11.50	100	24.40	30.40				
2, 3, 4, 5, 6	16	7.50	100	16.40	22.40				
CIRCUIT SIZE	A	B	N	G	T MAX				



SPROCKET HOLES FOR BOTH SIDES ONLY EXIST FOR DIM. A OF 32 mm. & 44 mm.

P/N: 87438-**-31

NOTES:

- LEADER AND TRAILER TAPE
- PEELING OFF FORCE OF THE TOP TAPE: 20-80gf. (PEELING DIRECTION AS SHOWN IN FOLLOWING FIGURE)
- PACKAGING STANDARD IS AS PER EIA-481.
- TAPE & REEL QUANTITY = 1000PCS/REEL
- THE TAPE IS TREATED FOR ANTI-STATIC

ADD LEADER & TRAILER EC NO. S2005-0714 DRAWN BY DRANKSEE CHKD BY CHIKOBILOW APPR: PTLIM	DESCRIPTION 2005/10/19 2005/10/19 2005/10/28	QUALITY SYMBOLS ▽=0 ▽=0	GENERAL TOLERANCES (UNLESS SPECIFIED)		DIMENSION STYLE MM ONLY		SCALE NTS	DESIGN UNITS METRIC	THIRD ANGLE PROJECTION			
			4 PLACES ± --- ± ---	3 PLACES ± --- ± ---	2 PLACES ± 0.20 ± ---	1 PLACE ± --- ± ---	ANGULAR ± 3 °	DRAWN BY KCLING	DATE 1994/04/08	CHECKED BY SKTOH	DATE 1994/04/21	APPROVED BY ROYWONG
DRAFT WHERE APPLICABLE MUST REMAIN WITHIN DIMENSIONS			SEE TABLE		MATERIAL NO.		DOCUMENT NO.		SHEET NO.			
REV C1			SIZE A3		THIS DRAWING CONTAINS INFORMATION THAT IS PROPRIETARY TO MOLEX INCORPORATED AND SHOULD NOT BE USED WITHOUT WRITTEN PERMISSION		SD-87438-**-31		3 OF 3			