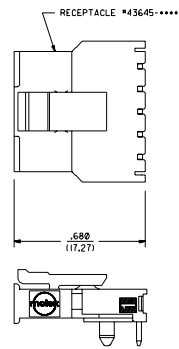
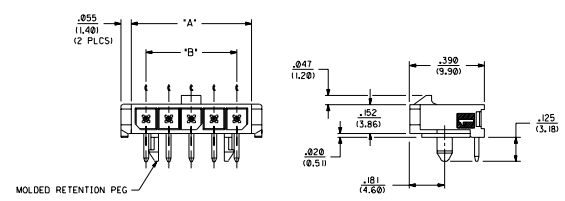
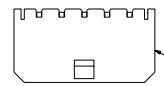


ASSEMBLY ITEM NUMBER	PART CHARACTERISTICS FOR RIGHT ANGLE	
	NUMBER OF POSITION	PLATING OPTION
43650-0200	02	A
43650-0201	02	B
43650-0202	02	C
43650-0300	03	A
43650-0301	03	B
43650-0302	03	C
43650-0400	04	A
43650-0401	04	B
43650-0402	04	C
43650-0500	05	A
43650-0501	05	B
43650-0502	05	C
43650-0600	06	A
43650-0601	06	B
43650-0602	06	C
43650-0700	07	A
43650-0701	07	B
43650-0702	07	C
43650-0800	08	A
43650-0801	08	B
43650-0802	08	C
43650-0900	09	A
43650-0901	09	B
43650-0902	09	C
43650-1000	10	A
43650-1001	10	B
43650-1002	10	C
43650-1100	11	A
43650-1101	11	B
43650-1102	11	C
43650-1200	12	A
43650-1201	12	B
43650-1202	12	C

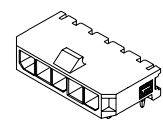
CKT. NO.	DIM. "A"	DIM. "B"	DIM. "C"
2	.270/(6.85)	.118/(3.00)	NA
3	.388/(9.85)	.236/(6.00)	NA
4	.506/(12.85)	.354/(9.00)	.185/(4.70)
5	.624/(15.85)	.472/(12.00)	.303/(7.70)
6	.742/(18.85)	.591/(15.00)	.421/(10.70)
7	.860/(21.85)	.709/(18.00)	.539/(13.70)
8	.978/(24.85)	.827/(21.00)	.657/(16.70)
9	1.096/(27.85)	.945/(24.00)	.776/(19.70)
10	1.215/(30.85)	1.063/(27.00)	.894/(22.70)
11	1.333/(33.85)	1.181/(30.00)	1.012/(25.70)
12	1.451/(36.85)	1.299/(33.00)	1.130/(28.70)



MATED MICRO-FIT CONNECTOR

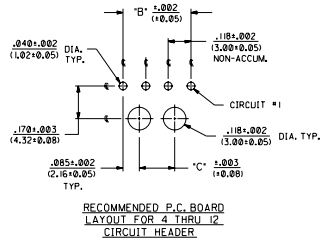


RIGHT ANGLE THRU HOLE

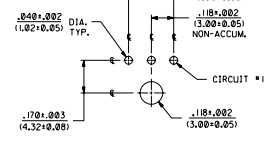


RIGHT ANGLE THRU HOLE HEADER ISO VIEW

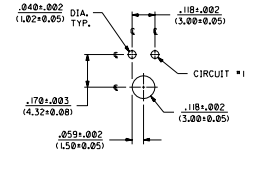
- NOTES:
- HOUSING MATERIAL: 30% GLASS FILLED LIQUID CRYSTAL POLYMER (LCP), UL 94V-0, COLOR IS BLACK.
  - THIS HEADER MATES WITH MICRO-FIT RECEPTACLE \*43645-\*\*\*\*.
  - THIS HEADER IS DESIGNED IN METRIC.
  - SEE SHEETS 1 THRU 5 FOR RIGHT ANGLE ASSEMBLIES AND THEIR RESPECTIVE PART NUMBERS.
  - SEE SHEETS 6 THRU 10 FOR VERTICAL ASSEMBLIES AND THEIR RESPECTIVE PART NUMBERS.
  - TERMINAL PLATING:
    - "A": .000100/(0.0025) BRIGHT TIN-LEAD (90/10) OVER .000030/(0.00076) NICKEL.
    - "B": .000015/(0.00038) GOLD IN SELECTIVE AREA, AND .000050/(0.0013) TIN-LEAD (90/10) IN SELECTIVE AREA, BOTH OVER .000030/(0.00076) NICKEL.
    - "C": .000030/(0.00076) GOLD IN SELECTIVE AREA, AND .000050/(0.0013) TIN-LEAD (90/10) IN SELECTIVE AREA, BOTH OVER .000030/(0.00076) NICKEL.
  - DESIGNED FOR .062/(1.57) THICK P.C. BOARDS.
  - ALL CONNECTORS MUST MEET THE PERFORMANCE REQUIREMENTS OF MOLEX PRODUCT SPECIFICATION PFS-43650.
  - TRAY PACKAGING SPECIFICATIONS ARE SHOWN ON DRAWING \*PK-70873-032L.



RECOMMENDED P.C. BOARD LAYOUT FOR 4 THRU 12 CIRCUIT HEADER



RECOMMENDED P.C. BOARD LAYOUT FOR 3 CIRCUIT HEADER



RECOMMENDED P.C. BOARD LAYOUT FOR 2 CIRCUIT HEADER

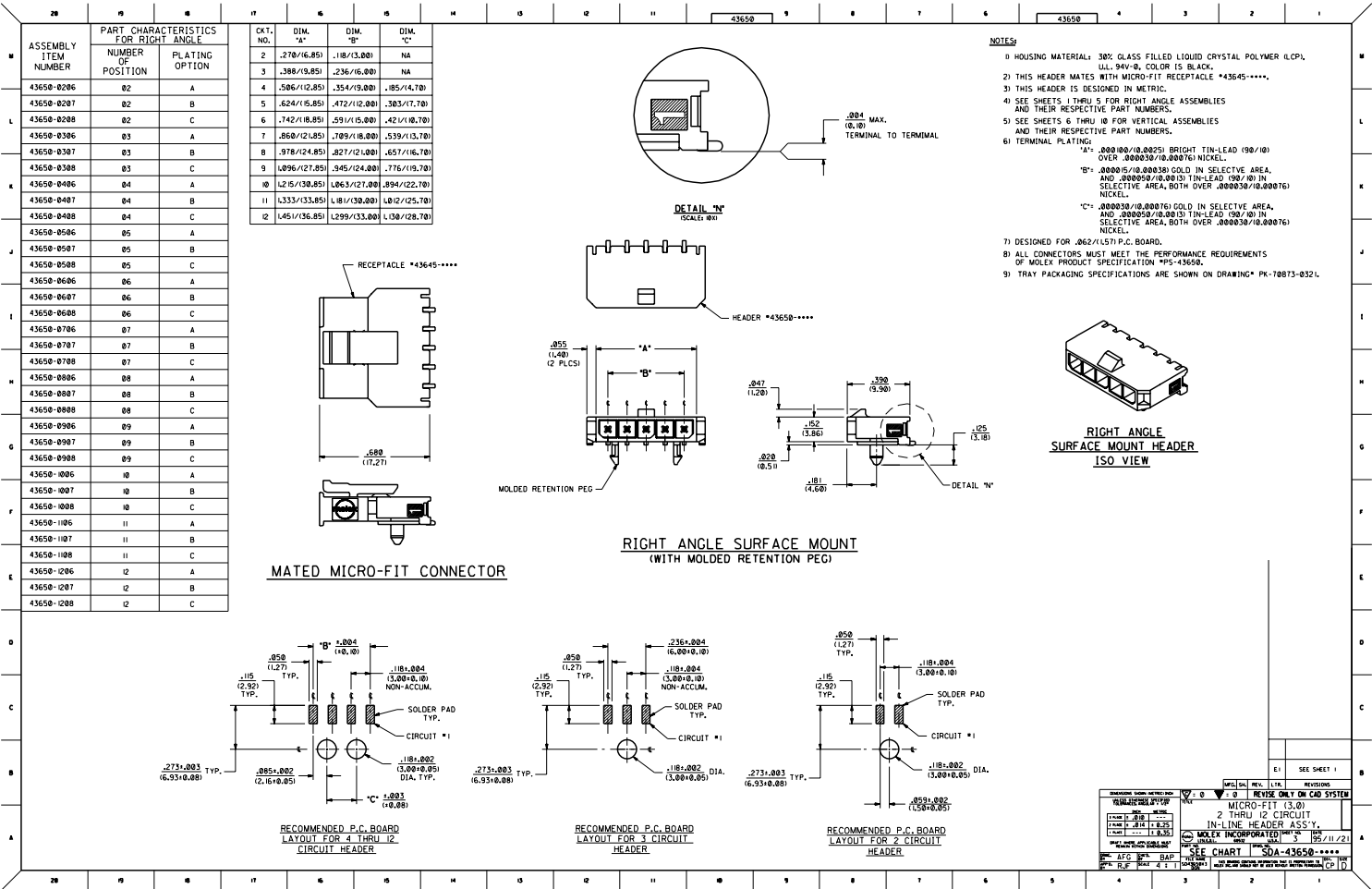
REV.	DATE	DESCRIPTION
F		REVISE PER MICROFIT-0446 (REV. 02/2/99)
E2		REVISE PER ECH *43650-0571 (30-05-05) AUG21K
E1		REVISE PER ECH *43650-0541 (30-05-05) AUG21K
E		REVISE PER ECH *43650-0571 (30-05-05) AUG21K
D2		REVISE PER ECH *43650-0571 (30-05-05) AUG21K
D1		REVISE PER ECH *43650-0571 (30-05-05) AUG21K
C2		REVISE PER ECH *43650-0571 (30-05-05) AUG21K
C1		REVISE PER ECH *43650-0571 (30-05-05) AUG21K
B2		REVISE PER ECH *43650-0571 (30-05-05) AUG21K
B1		REVISE PER ECH *43650-0571 (30-05-05) AUG21K
A		FINAL RELEASE ECH *43650-0571 (30-05-05) AUG21K
1		1-RELEASE ECH *43650-0571 (30-05-05) AUG21K
1		1-RELEASE ECH *43650-0571 (30-05-05) AUG21K

DESIGNED BY: J. J. J. J.	DATE: 11/95	REV. 1
DRAWN BY: J. J. J. J.	DATE: 11/95	REV. 1
CHECKED BY: J. J. J. J.	DATE: 11/95	REV. 1
APPROVED BY: J. J. J. J.	DATE: 11/95	REV. 1

MOLEX INCORPORATED

SEE CHART SDA-43650-\*\*\*\*



CT. NO.	DIM. "A"	DIM. "B"	DIM. "C"
2	.270(6.85)	.18(4.57)	NA
3	.388(9.85)	.236(6.00)	NA
4	.586(14.85)	.354(9.00)	.185(4.70)
5	.624(15.85)	.472(12.00)	.383(9.70)
6	.742(18.85)	.591(15.00)	.421(10.70)
7	.860(21.85)	.709(18.00)	.539(13.70)
8	.978(24.85)	.827(21.00)	.657(16.70)
9	1.096(27.85)	.945(24.00)	.776(19.70)
10	1.215(30.85)	1.063(27.00)	.894(22.70)
11	1.333(33.85)	1.181(30.00)	1.012(25.70)
12	1.451(36.85)	1.299(33.00)	1.130(28.70)

- NOTES:**
- HOUSING MATERIAL: 30% GLASS FILLED LIQUID CRYSTAL POLYMER (LCP), ULL 94V-0, COLOR IS BLACK.
  - THIS HEADER MATES WITH MICRO-FIT RECEPTACLE \*43645-\*\*\*\*.
  - THIS HEADER IS DESIGNED IN METRIC.
  - SEE SHEETS 1 THRU 5 FOR RIGHT ANGLE ASSEMBLIES AND THEIR RESPECTIVE PART NUMBERS.
  - SEE SHEETS 6 THRU 10 FOR VERTICAL ASSEMBLIES AND THEIR RESPECTIVE PART NUMBERS.
  - TERMINAL PLATING:
    - "A": .000100/(0.0025) BRIGHT TIN-LEAD (90/10) OVER .000030/(0.00075) NICKEL.
    - "B": .000015/(0.00038) GOLD IN SELECTIVE AREA, AND .000050/(0.0013) TIN-LEAD (90/10) IN SELECTIVE AREA, BOTH OVER .000030/(0.00075) NICKEL.
    - "C": .000030/(0.00075) GOLD IN SELECTIVE AREA, AND .000030/(0.00075) TIN-LEAD (90/10) IN SELECTIVE AREA, BOTH OVER .000030/(0.00075) NICKEL.
  - DESIGNED FOR .062/(1.57) P.C. BOARD.
  - ALL CONNECTORS MUST MEET THE PERFORMANCE REQUIREMENTS OF MOLEX PRODUCT SPECIFICATION PMS-43650.
  - TRAY PACKAGING SPECIFICATIONS ARE SHOWN ON DRAWING\* PK-70873-032L.

**MATED MICRO-FIT CONNECTOR**

**RIGHT ANGLE SURFACE MOUNT (WITH MOLDED RETENTION PEG)**

**RECOMMENDED P.C. BOARD LAYOUT FOR 4 THRU 12 CIRCUIT HEADER**

**RECOMMENDED P.C. BOARD LAYOUT FOR 1 CIRCUIT HEADER**

**RECOMMENDED P.C. BOARD LAYOUT FOR 2 CIRCUIT HEADER**

REV.	DATE	BY	CHKD.	REVISIONS
1	05/11/21			REVISION ONLY ON CAD SYSTEM

MICRO-FIT (3.0)  
 2 THRU 12 CIRCUIT  
 IN-LINE HEADER ASS'Y.  
 MOLEX INCORPORATED  
 SEE CHART SDA-43650-\*\*\*\*  
 AFG BAP  
 PK-70873-032L