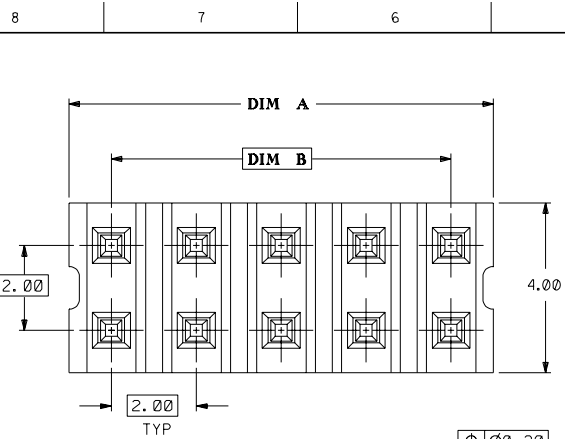
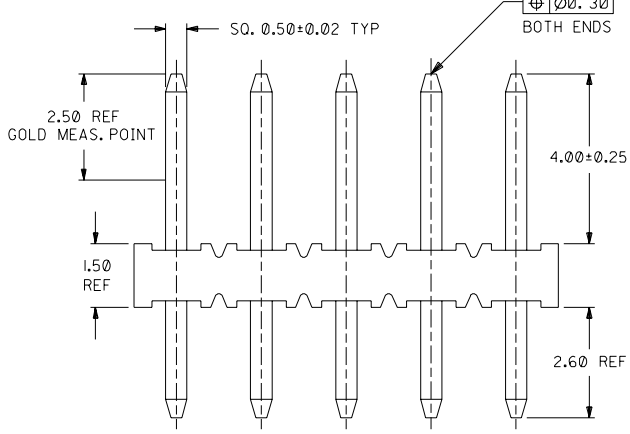
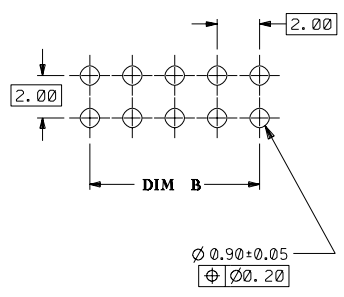


DWG. NO. SD 87089-**-16
 CAD FILE S8708916.DGN

DO NOT SCALE DRAWING



RECOMMENDED PCB PATTERN
(SCALE 5:1)



PART NO.	CKT SIZE	DIM A	DIM B
87089-02**	2	NA	NA
87089-04**	4	3.90	2.00
87089-06**	6	5.90	4.00
87089-08**	8	7.90	6.00
87089-10**	10	9.90	8.00
87089-12**	12	11.90	10.00
87089-14**	14	13.90	12.00
87089-16**	16	15.90	14.00
87089-18**	18	17.90	16.00
87089-20**	20	19.90	18.00
87089-22**	22	21.90	20.00
87089-24**	24	23.90	22.00
87089-26**	26	25.90	24.00
87089-28**	28	27.90	26.00
87089-30**	30	29.90	28.00
87089-32**	32	31.90	30.00
87089-34**	34	33.90	32.00
87089-36**	36	35.90	34.00
87089-38**	38	37.90	36.00
87089-40**	40	39.90	38.00
87089-42**	42	41.90	40.00
87089-44**	44	43.90	42.00
87089-46**	46	45.90	44.00
87089-48**	48	47.90	46.00
87089-50**	50	49.90	48.00

NOTES:

- ▽ 4 & 6 CKT SIZE ARE MADE BY BREAKING ASSEMBLY P/N 87089-081* AND P/N 87089-121* INTO HALVES RESPECTIVELY. BREAK-AWAY PROFILES ARE EXPECTED TO BE IRREGULAR.
- ▽ 2 CKT SIZE ARE MADE BY BREAKING LARGER ASSEMBLY P/N, THE CUT PROFILES ARE IRREGULAR AND UNDEFINED.
- 3. 10 CIRCUIT SIZE SHOWN FOR ILLUSTRATION ONLY. SEE CHART FOR AVAILABLE PART SIZES.
- 4. PLATING FINISH :
 - 16 - 0.38um/15uin MIN. GOLD SELECTIVE AREA
1.90um/75uin MIN. TIN/LEAD IN SELECTED AREA OVER
1.27um/50uin MIN. NICKEL OVERALL
 - 17 - 0.76um/30uin MIN. GOLD SELECTIVE AREA
1.90um/75uin MIN. TIN/LEAD IN SELECTED AREA OVER
1.27um/50uin MIN. NICKEL OVERALL
- 5. PRODUCT SPECIFICATION PS-87049 APPLIES
- 6. RECOMMENDED PC BOARD THICKNESS IS 1.60 ± 0.10mm. mm

PART NUMBER LEGEND

87089 - * * * *

CKT SIZE PLATING

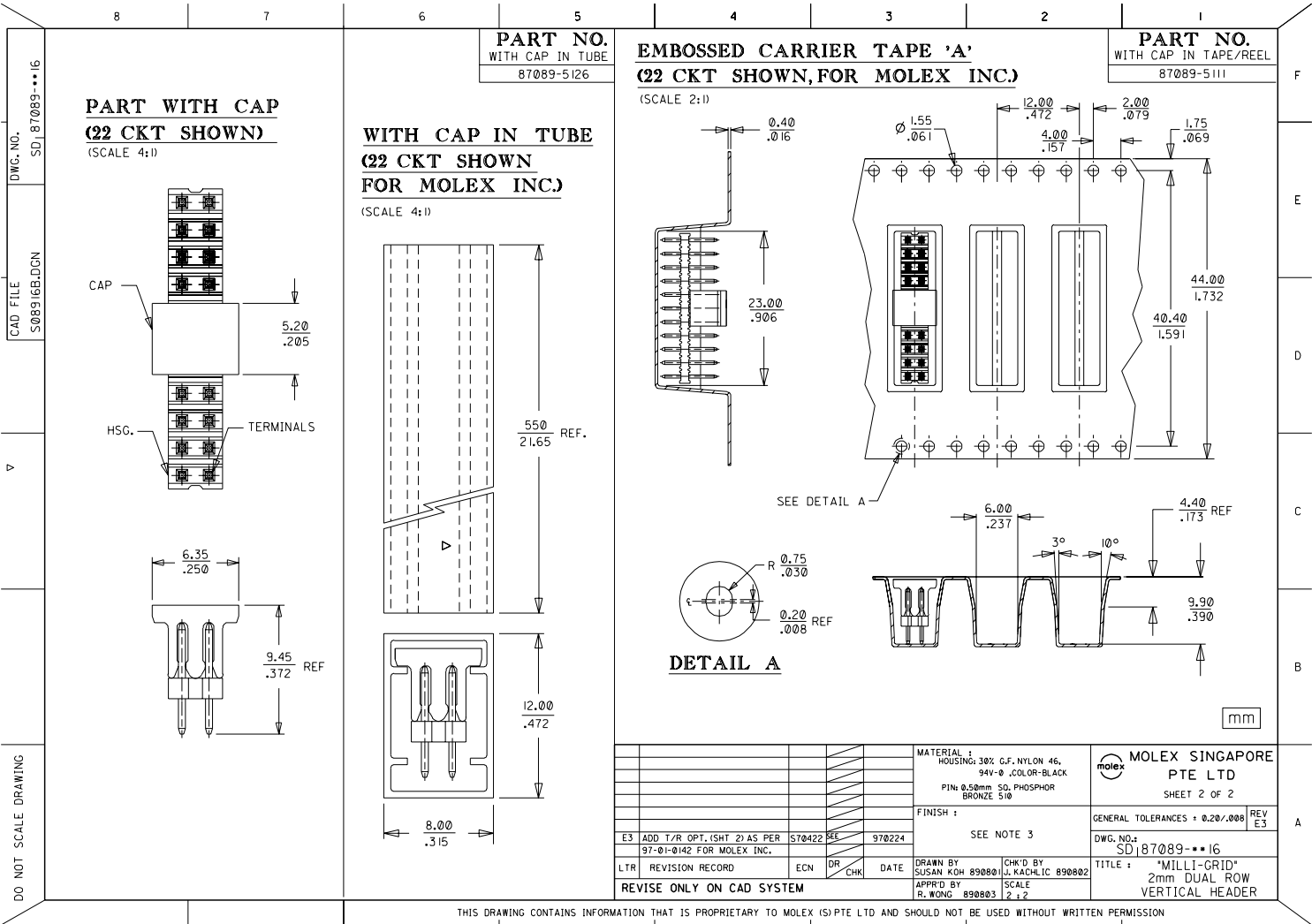
16 (SEE NOTE 4)

17

SHT	1	2
REV	E3	E3

MATERIAL : HOUSING: 30% G.F. NYLON 46, 94V-0 ,COLOR-BLACK PIN: 0.50mm SD, PHOSPHOR BRONZE 510				MOLEX SINGAPORE PTE LTD SHEET 1 OF 2	
FINISH : SEE NOTE 3				GENERAL TOLERANCES : ± 0.20/.008 REV E3	
E3 ADD T/R OPT. (SHT 2) AS PER S70422 SEE 970224				DWG. NO.: SD 87089-**-16	
E2 ADD 2 CKT SIZE S60168 SEE GMS 950929				TITLE : 'MILLI-GRID' 2mm DUAL ROW VERTICAL HEADER	
E1 REVISED HOUSING MAT'L S40030 JACK LINK 930814				DRAWN BY SUSAN KOH 890801 CHK'D BY J. KACHLIC 890802	
LTR REVISION RECORD ECN DR CHK DATE				APPR'D BY R. WONG 890803 SCALE 10 : 1	
REVISE ONLY ON CAD SYSTEM					

THIS DRAWING CONTAINS INFORMATION THAT IS PROPRIETARY TO MOLEX (S) PTE LTD AND SHOULD NOT BE USED WITHOUT WRITTEN PERMISSION



PART NO.
WITH CAP IN TUBE
87089-5126

EMBOSSD CARRIER TAPE 'A'
(22 CKT SHOWN, FOR MOLEX INC.)

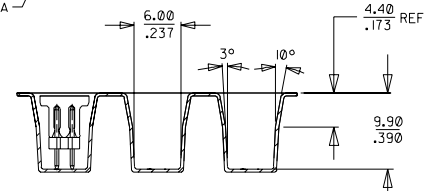
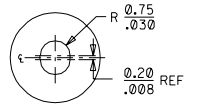
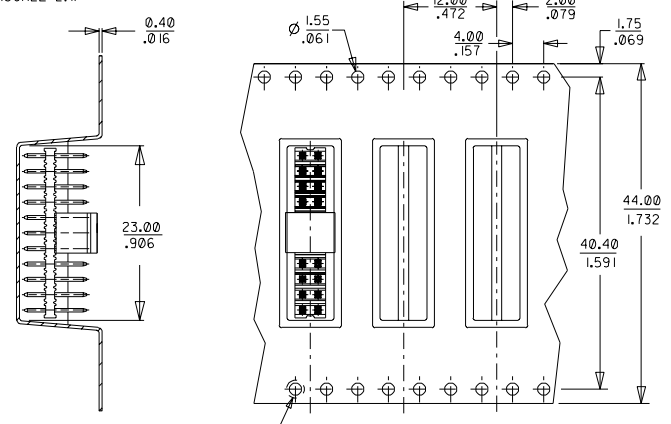
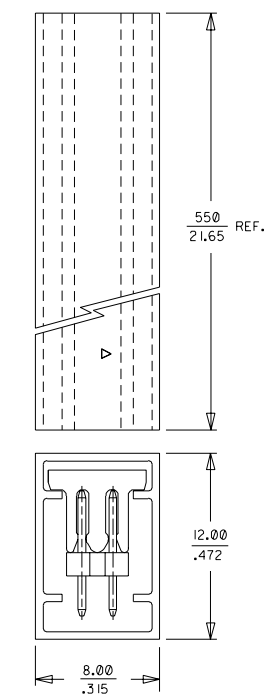
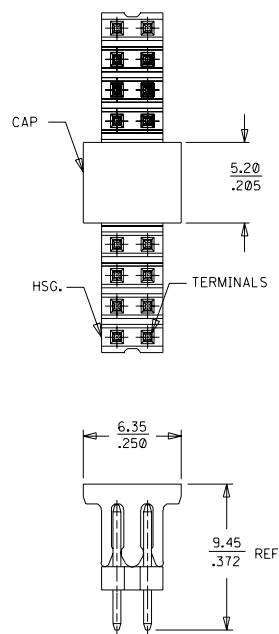
PART NO.
WITH CAP IN TAPE/REEL
87089-5111

PART WITH CAP
(22 CKT SHOWN)
(SCALE 4:1)

WITH CAP IN TUBE
(22 CKT SHOWN
FOR MOLEX INC.)
(SCALE 4:1)

(SCALE 2:1)

DWG. NO. SD 87089-116
 CAD FILE S08916B.DCN
 DO NOT SCALE DRAWING



mm

				MATERIAL : HOUSING: 30% C.F. NYLON 46, 94V-0 .COLOR-BLACK PIN: 0.50mm SQ. PHOSPHOR BRONZE 5/0		MOLEX SINGAPORE PTE LTD SHEET 2 OF 2	
				FINISH :		GENERAL TOLERANCES : 0.20/.008	
				SEE NOTE 3		REV E3	
E3 ADD T/R OPT. (SHT 2) AS PER 97-01-0142 FOR MOLEX INC.				S70422		970224	
LTR REVISION RECORD REVISE ONLY ON CAD SYSTEM				ECN DR CHK		DATE	
				DRAWN BY SUSAN KOH 890801		CHK'D BY J. KACHLIC 890802	
				APPR'D BY R. WONG 890803		SCALE 2:1	
						DWG. NO.: SD187089-116 TITLE : 'MILLI-GRID' 2mm DUAL ROW VERTICAL HEADER	

THIS DRAWING CONTAINS INFORMATION THAT IS PROPRIETARY TO MOLEX (S) PTE LTD AND SHOULD NOT BE USED WITHOUT WRITTEN PERMISSION