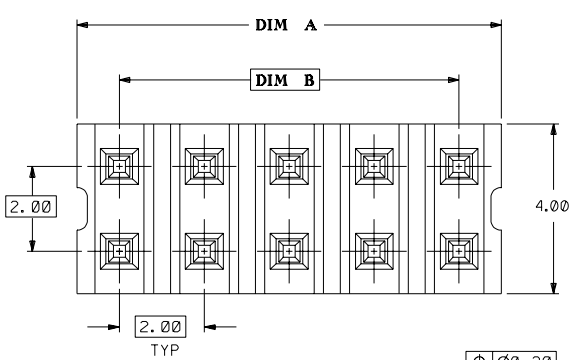


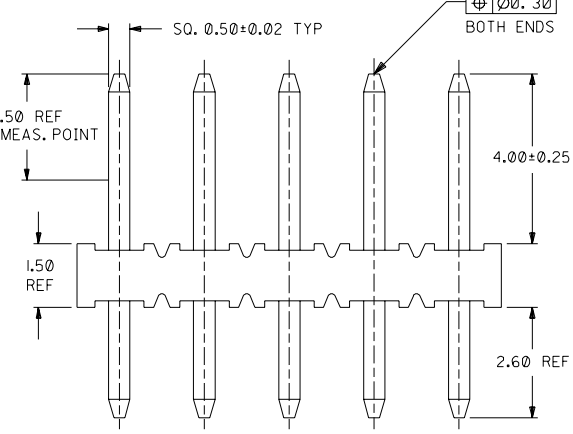
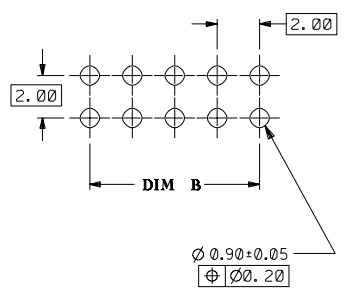
DWG. NO. SD 87089-**-16
 CAD FILE S8708916.DGN

DO NOT SCALE DRAWING

8 | 7 | 6 | 5 | 4 | 3 | 2 | 1



RECOMMENDED PCB PATTERN
(SCALE 5:1)



PART NO.	CKT SIZE	DIM A	DIM B
87089-02**	2	NA	NA
87089-04**	4	3.90	2.00
87089-06**	6	5.90	4.00
87089-08**	8	7.90	6.00
87089-10**	10	9.90	8.00
87089-12**	12	11.90	10.00
87089-14**	14	13.90	12.00
87089-16**	16	15.90	14.00
87089-18**	18	17.90	16.00
87089-20**	20	19.90	18.00
87089-22**	22	21.90	20.00
87089-24**	24	23.90	22.00
87089-26**	26	25.90	24.00
87089-28**	28	27.90	26.00
87089-30**	30	29.90	28.00
87089-32**	32	31.90	30.00
87089-34**	34	33.90	32.00
87089-36**	36	35.90	34.00
87089-38**	38	37.90	36.00
87089-40**	40	39.90	38.00
87089-42**	42	41.90	40.00
87089-44**	44	43.90	42.00
87089-46**	46	45.90	44.00
87089-48**	48	47.90	46.00
87089-50**	50	49.90	48.00

NOTES:

- ▽ 4 & 6 CKT SIZE ARE MADE BY BREAKING ASSEMBLY P/N 87089-081* AND P/N 87089-121* INTO HALVES RESPECTIVELY. BREAK-AWAY PROFILES ARE EXPECTED TO BE IRREGULAR.
- ▽ 2 CKT SIZE ARE MADE BY BREAKING LARGER ASSEMBLY P/N, THE CUT PROFILES ARE IRREGULAR AND UNDEFINED.
- 3. 10 CIRCUIT SIZE SHOWN FOR ILLUSTRATION ONLY. SEE CHART FOR AVAILABLE PART SIZES.
- 4. PLATING FINISH :
 - 16 - 0.38um/15uin MIN. GOLD SELECTIVE AREA
1.90um/75uin MIN. TIN/LEAD IN SELECTED AREA OVER
1.27um/50uin MIN. NICKEL OVERALL
 - 17 - 0.76um/30uin MIN. GOLD SELECTIVE AREA
1.90um/75uin MIN. TIN/LEAD IN SELECTED AREA OVER
1.27um/50uin MIN. NICKEL OVERALL
- 5. PRODUCT SPECIFICATION PS-87049 APPLIES
- 6. RECOMMENDED PC BOARD THICKNESS IS 1.60 ± 0.10mm. mm

PART NUMBER LEGEND

87089 - * * * *

CKT SIZE PLATING

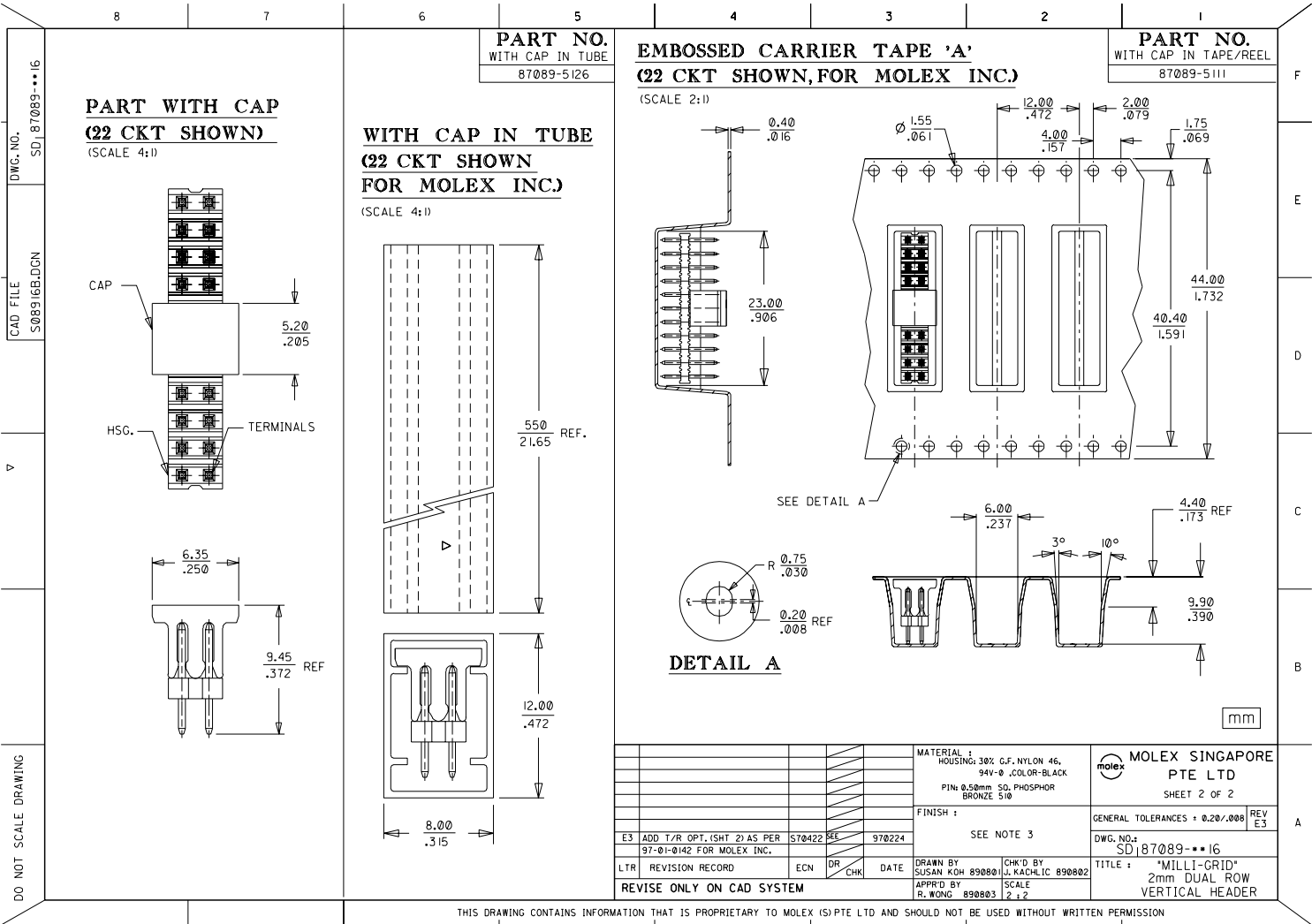
16 (SEE NOTE 4)

17

SHT	1	2
REV	E3	E3

MATERIAL : HOUSING: 30% G.F. NYLON 46, 94V-0 ,COLOR-BLACK PIN: 0.50mm SD, PHOSPHOR BRONZE 510				MOLEX SINGAPORE PTE LTD SHEET 1 OF 2	
FINISH : SEE NOTE 3				GENERAL TOLERANCES : ± 0.20/.008 REV E3	
DRAWN BY SUSAN KOH 890801 APPR'D BY R. WONG 890803				TITLE : 'MILLI-GRID' 2mm DUAL ROW VERTICAL HEADER	

THIS DRAWING CONTAINS INFORMATION THAT IS PROPRIETARY TO MOLEX (S) PTE LTD AND SHOULD NOT BE USED WITHOUT WRITTEN PERMISSION



PART NO.
WITH CAP IN TUBE
87089-5126

EMBOSSD CARRIER TAPE 'A'
(22 CKT SHOWN, FOR MOLEX INC.)
(SCALE 2:1)

PART NO.
WITH CAP IN TAPE/REEL
87089-5111

PART WITH CAP
(22 CKT SHOWN)
(SCALE 4:1)

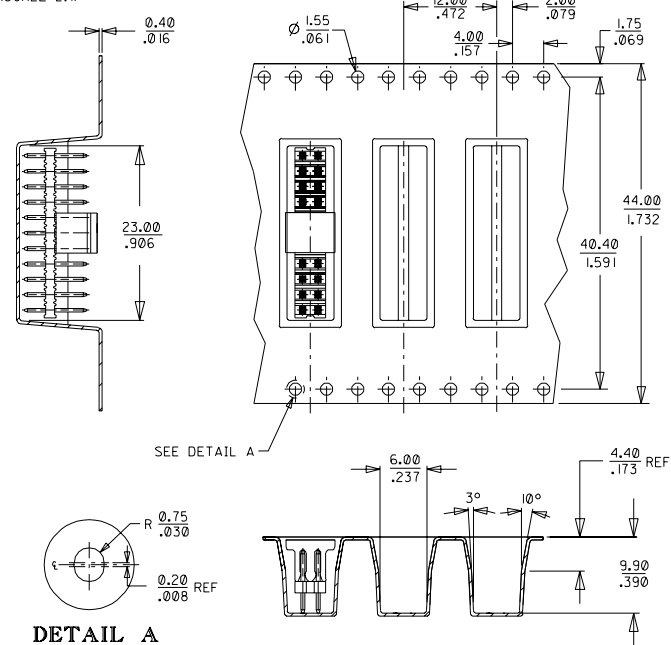
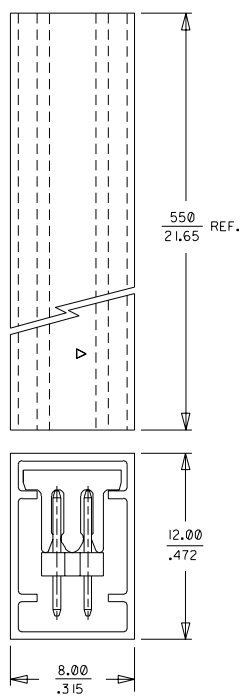
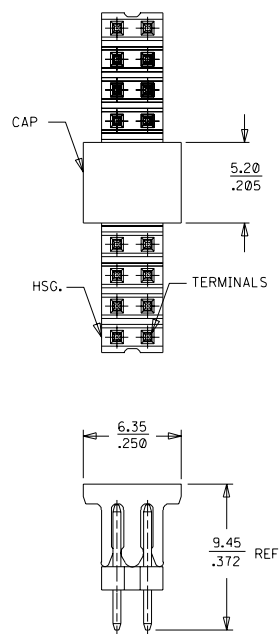
WITH CAP IN TUBE
(22 CKT SHOWN
FOR MOLEX INC.)
(SCALE 4:1)

DWG. NO. SD 87089-116

CAD FILE S08916B.DCN

V

DO NOT SCALE DRAWING



				MATERIAL : HOUSING: 30% C.F. NYLON 46, 94V-0 .COLOR-BLACK		MOLEX SINGAPORE PTE LTD	
				FINISH : PINS: 0.50mm SQ. PHOSPHOR BRONZE 5/0		SHEET 2 OF 2	
				FINISH : SEE NOTE 3		GENERAL TOLERANCES : 0.20/.008 REV E3	
E3 ADD T/R OPT. (SHT 2) AS PER 97-01-0142 FOR MOLEX INC.				S70422	970224	DWG. NO.: SD 87089-116	
LTR REVISION RECORD				ECN	DR	CHK	DATE
REVISE ONLY ON CAD SYSTEM				DRAWN BY SUSAN KOH 890801		CHK'D BY J. KACHLIC 890802	
				APPR'D BY R. WONG 890803		SCALE 2:1	
				TITLE : 'MILLI-GRID' 2mm DUAL ROW VERTICAL HEADER			

THIS DRAWING CONTAINS INFORMATION THAT IS PROPRIETARY TO MOLEX (S) PTE LTD AND SHOULD NOT BE USED WITHOUT WRITTEN PERMISSION