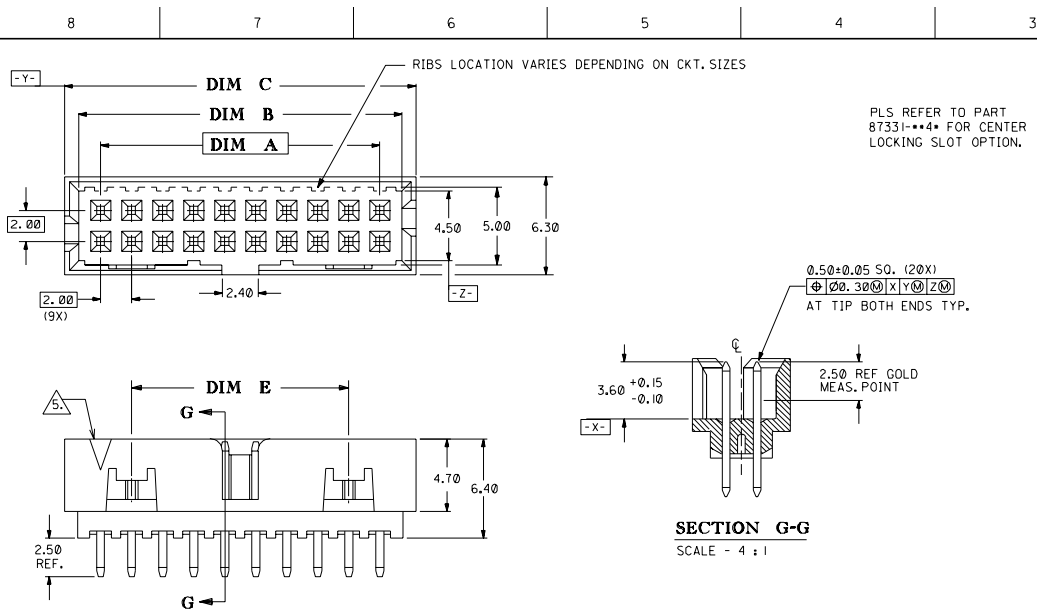


DWG. NO. SD1 87331-\*\*-20  
 CAD FILE S8733120.DGN



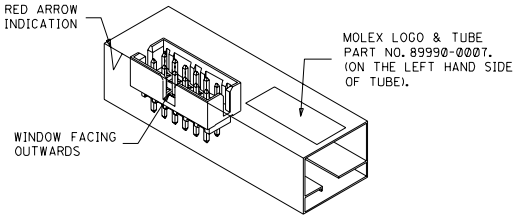
PART NO.	CKT SIZE	DIM A	DIM B	DIM C	DIM D	DIM E
87331-042*	4	2.00	4.85	6.65	5.00	—
87331-062*	6	4.00	6.85	8.65	7.00	—
87331-082*	8	6.00	8.85	10.65	9.00	—
87331-102*	10	8.00	10.85	12.65	11.00	—
87331-122*	12	10.00	12.85	14.65	13.00	—
87331-142*	14	12.00	14.85	16.65	15.00	8.00
87331-162*	16	14.00	16.85	18.65	17.00	10.00
87331-182*	18	16.00	18.85	20.65	19.00	12.00
87331-202*	20	18.00	20.85	22.65	21.00	14.00
87331-222*	22	20.00	22.85	24.65	23.00	16.00
87331-242*	24	22.00	24.85	26.65	25.00	18.00
87331-262*	26	24.00	26.85	28.65	27.00	20.00
87331-282*	28	26.00	28.85	30.65	29.00	22.00
87331-302*	30	28.00	30.85	32.65	31.00	24.00
87331-322*	32	30.00	32.85	34.65	33.00	26.00
87331-342*	34	32.00	34.85	36.65	35.00	28.00
87331-362*	36	34.00	36.85	38.65	37.00	30.00
87331-382*	38	36.00	38.85	40.65	39.00	32.00
87331-402*	40	38.00	40.85	42.65	41.00	34.00
87331-422*	42	40.00	42.85	44.65	43.00	36.00
87331-442*	44	42.00	44.85	46.65	45.00	38.00
87331-462*	46	44.00	46.85	48.65	47.00	40.00
87331-482*	48	46.00	48.85	50.65	49.00	42.00
87331-502*	50	48.00	50.85	52.65	51.00	44.00

**PART NUMBER LEGEND:**

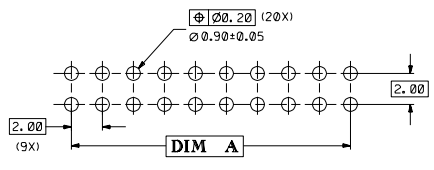
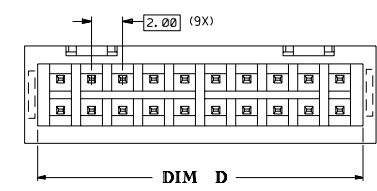
87331-\*\*-\*\*  
 CKT SIZE  
 PLATING OPTION  
 20 - 0.38um/15uin GOLD IN CONTACT AREA AND 1.90um/75uin MIN. TIN/LEAD IN SOLDER TAIL AREA OVER 1.27um/50uin MIN. NICKEL OVERALL.  
 21 - 0.76um/30uin GOLD IN CONTACT AREA AND 1.90um/75uin MIN. TIN/LEAD IN SOLDER TAIL AREA OVER 1.27um/50uin MIN. NICKEL OVERALL.

**NOTES:**

- FOR ILLUSTRATION PURPOSES, 20 CIRCUIT SIZE WAFER IS SHOWN
  - NO CENTRE POLARIZATION SLOT FOR CKT SIZE 4 AND 6.
  - PRODUCT SPECIFICATION PS-87331 APPLIES.
  - NO SIDE LOCKING SLOT FROM 4 TO 12 CKT SIZE.
- △ 5) CKT 4 & 6 HAS NO IDENTIFICATION TAG



**FIG.1 : ORIENTATION OF PART IN TUBE.**  
 (FOR THE REFERENCE OF PART/TUBE ASSEMBLY.)



**RECOMMENDED PCB PATTERN**

B3	ADD NOTE 5 & SYMBOL IECN* 2000 (-007B)	SEL	990803
B2	ADD FIG. 1	SEL	960328
B1	REVISE PER ECN*	SEL	940818
B	REVISE PER ECN*	SEL	940803
A	REVISE PER ECN*	SEL	930427
I	PRE-REL PER ECN*	SEL	920612
LTR	REVISION RECORD	DR	CHK

MATERIAL : HOUSING : 30% G.F. NYLON 46 UL94V-0 COLOR - BLACK  
 PIN : 0.50MM SQ. PHOSPHOR BRONZE  
 FINISH : SEE ABOVE

**MOLEX SINGAPORE PTE LTD**  
 SHEET 1 OF 1  
 GENERAL TOLERANCES ± 0.20/.008  
 DWG. NO.: SD1 87331-\*\*-20  
 TITLE : \*MILLI-GRID\* VERTICAL SHROUDED HEADER W/SLOT STANDOFF

REVISE ONLY ON CAD SYSTEM

THIS DRAWING CONTAINS INFORMATION THAT IS PROPRIETARY TO MOLEX (S) PTE LTD AND SHOULD NOT BE USED WITHOUT WRITTEN PERMISSION

DO NOT SCALE DRAWING