

DWG. NO. SD1 87331-**-20
CAD FILE S8733120.DGN

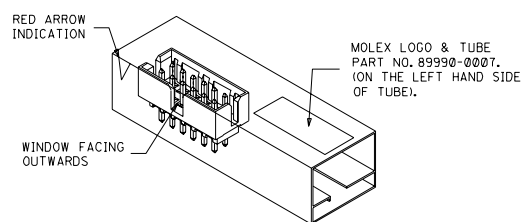
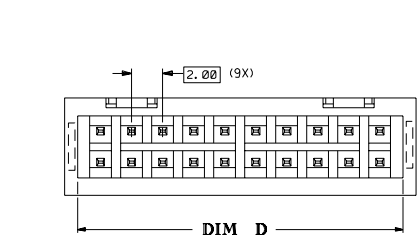
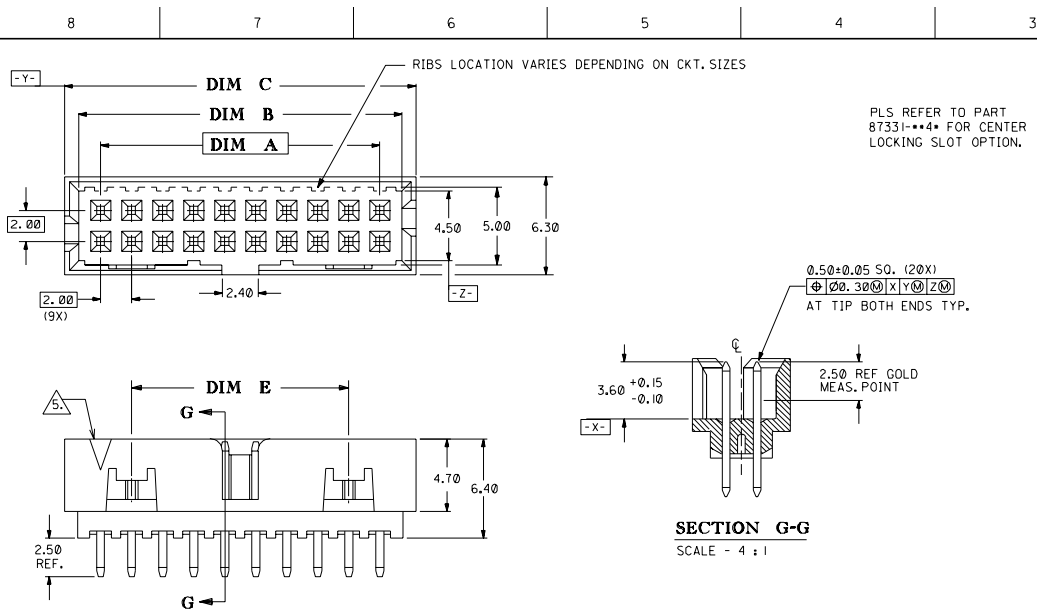


FIG.1 : ORIENTATION OF PART IN TUBE.
(FOR THE REFERENCE OF PART/TUBE ASSEMBLY.)

PART NO.	CKT SIZE	DIM A	DIM B	DIM C	DIM D	DIM E
87331-042*	4	2.00	4.85	6.65	5.00	—
87331-062*	6	4.00	6.85	8.65	7.00	—
87331-082*	8	6.00	8.85	10.65	9.00	—
87331-102*	10	8.00	10.85	12.65	11.00	—
87331-122*	12	10.00	12.85	14.65	13.00	—
87331-142*	14	12.00	14.85	16.65	15.00	8.00
87331-162*	16	14.00	16.85	18.65	17.00	10.00
87331-182*	18	16.00	18.85	20.65	19.00	12.00
87331-202*	20	18.00	20.85	22.65	21.00	14.00
87331-222*	22	20.00	22.85	24.65	23.00	16.00
87331-242*	24	22.00	24.85	26.65	25.00	18.00
87331-262*	26	24.00	26.85	28.65	27.00	20.00
87331-282*	28	26.00	28.85	30.65	29.00	22.00
87331-302*	30	28.00	30.85	32.65	31.00	24.00
87331-322*	32	30.00	32.85	34.65	33.00	26.00
87331-342*	34	32.00	34.85	36.65	35.00	28.00
87331-362*	36	34.00	36.85	38.65	37.00	30.00
87331-382*	38	36.00	38.85	40.65	39.00	32.00
87331-402*	40	38.00	40.85	42.65	41.00	34.00
87331-422*	42	40.00	42.85	44.65	43.00	36.00
87331-442*	44	42.00	44.85	46.65	45.00	38.00
87331-462*	46	44.00	46.85	48.65	47.00	40.00
87331-482*	48	46.00	48.85	50.65	49.00	42.00
87331-502*	50	48.00	50.85	52.65	51.00	44.00

PART NUMBER LEGEND:

- 87331-**-**
- CKT SIZE
- PLATING OPTION
- 20 - 0.38um/15uin GOLD IN CONTACT AREA AND 1.90um/75uin MIN. TIN/LEAD IN SOLDER TAIL AREA OVER 1.27um/50uin MIN. NICKEL OVERALL.
 - 21 - 0.76um/30uin GOLD IN CONTACT AREA AND 1.90um/75uin MIN. TIN/LEAD IN SOLDER TAIL AREA OVER 1.27um/50uin MIN. NICKEL OVERALL.

NOTES:

- FOR ILLUSTRATION PURPOSES, 20 CIRCUIT SIZE WAFER IS SHOWN
 - NO CENTRE POLARIZATION SLOT FOR CKT SIZE 4 AND 6.
 - PRODUCT SPECIFICATION PS-87331 APPLIES.
 - NO SIDE LOCKING SLOT FROM 4 TO 12 CKT SIZE.
- △ 5) CKT 4 & 6 HAS NO IDENTIFICATION TAG

B3 ADD NOTE 5 & SYMBOL IECN* 2000 - (007B)		SEL	990803	MATERIAL : HOUSING : 30% G.F. NYLON 46 UL94V-0 COLOR - BLACK FINISH : SEE ABOVE PIN : 0.50MM SQ. PHOSPHOR BRONZE	MOLEX SINGAPORE PTE LTD SHEET 1 OF 1
B2 ADD FIG. 1	S60450	SEL	960328		
B1 REVISE PER ECN*	S50078	MAC	940818		
B REVISE PER ECN*	S40584	SEL	940803		
A REVISE PER ECN*	S30634	ANG	930427		
I PRE-REL PER ECN*	S30099	ANG	920612	GENERAL TOLERANCES ± 0.20/.008 DWG. NO.: SD1 87331-**-20 TITLE : *MILLI-GRID* VERTICAL SHROUDED HEADER W/SLOT STANDOFF	
LTR REVISION RECORD		DR	DATE	DRAWN BY ANG GW 920612 APPR'D BY ROY WONG 920914 CHK'D BY TOH SK 920914 SCALE 4 : 1	REV B3
REVISE ONLY ON CAD SYSTEM					

THIS DRAWING CONTAINS INFORMATION THAT IS PROPRIETARY TO MOLEX (S) PTE LTD AND SHOULD NOT BE USED WITHOUT WRITTEN PERMISSION

DO NOT SCALE DRAWING