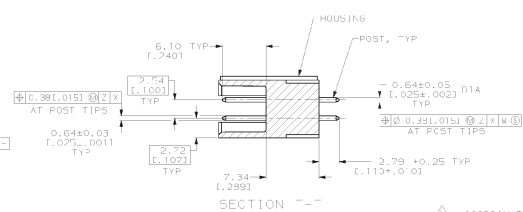
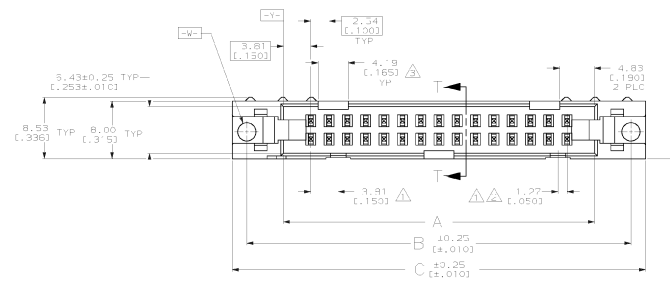
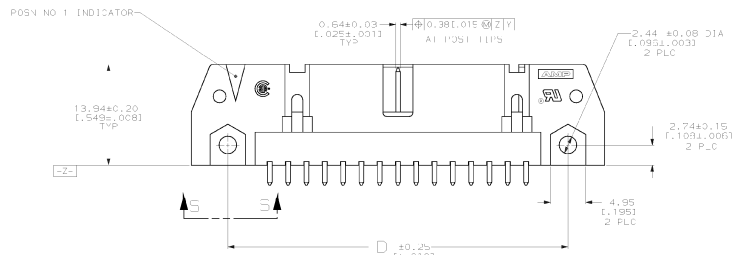


BRAND NAME IN THIS ANGLE PROTECTION
THIS DRAWING IS UNCLASSIFIED. RELEASED FOR PUBLICATION
© COPYRIGHT 19 BY AMP INCORPORATED. ALL INTERNATIONAL RIGHTS RESERVED.

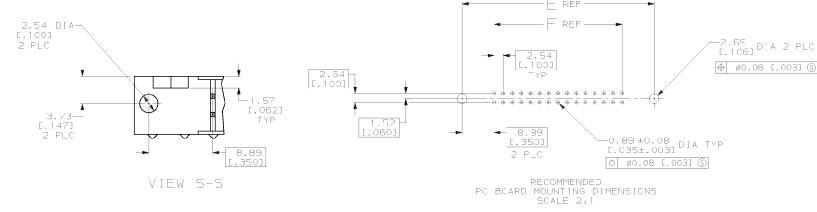
REVISED		DATE	APP'D
1	D	REVISION PER EDR 40832	1-22-95
2	E	RES-20, 11, 13 PER EC 0020-004-85	04-04-95
3	F	SNPSD -10, -2 PER EC 0020-503-95	02-04-95
4	G	085-1 THROUGH 8-25 PER EC 051A-0083-00	01-04-95



- △ COORDINATE DIMENSION APPLIES FROM BASIC LOCATION.
- △ 10 AND 14 POSITION SIZES CONTAIN ONLY ONE SLOT FOR SNAP-IN POLARIZER (MILITARY POLARIZATION) LOCATED AS SHOWN.
- △ 10 POSITION SIZES CONTAIN ONLY ONE SLOT FOR DUAL POLARIZATION, LOCATED AS SHOWN.
- 4. RECOMMENDED PRINTED CIRCUIT BOARD THICKNESS IS 1.57 (L.062).



	F	E	D	C	B	A	NO OF POSN	PART NUMBER
CBSOLETE	53.34 (2.100)	71.12 (2.800)	69.02 (2.560)	79.18 (2.963)	71.12 (2.800)	60.96 (2.400)	44	1-499703-3
SUPSD BY 1-102153-2	78.74 (3.100)	96.52 (3.800)	95.42 (3.560)	100.58 (3.960)	96.52 (3.800)	86.36 (3.400)	64	1-499703-2
CBSOLETE	73.65 (2.900)	91.44 (3.600)	93.34 (3.360)	95.25 (3.750)	91.44 (3.600)	87.26 (3.200)	60	1-499703-1
SUPSD BY 1-102153-0	60.96 (2.400)	78.74 (3.100)	72.64 (2.860)	82.80 (3.260)	78.74 (3.100)	68.52 (2.700)	50	1-499703-C
CBSOLETE	48.25 (1.900)	66.04 (2.600)	53.34 (2.100)	60.12 (2.360)	66.04 (2.600)	55.96 (2.200)	40	199703-S
CBSOLETE	40.64 (1.600)	58.42 (2.300)	52.32 (2.060)	62.49 (2.460)	58.42 (2.300)	48.26 (1.900)	34	499703-R
CBSOLETE	35.56 (1.400)	53.34 (2.100)	47.24 (1.860)	57.45 (2.260)	53.34 (2.100)	43.18 (1.700)	30	499703-7
CBSOLETE	30.48 (1.200)	48.26 (1.900)	42.16 (1.660)	52.33 (2.060)	48.26 (1.900)	40.10 (1.580)	26	499703-E
CBSOLETE	27.94 (1.100)	45.72 (1.800)	39.62 (1.560)	49.78 (1.960)	45.72 (1.800)	35.56 (1.400)	24	499703-E
CBSOLETE	22.86 (0.900)	40.64 (1.600)	34.54 (1.360)	44.73 (1.760)	40.64 (1.600)	30.48 (1.200)	20	499703-4
CBSOLETE	17.78 (0.700)	35.56 (1.400)	29.46 (1.160)	39.62 (1.560)	35.56 (1.400)	25.40 (1.000)	16	499703-3
CBSOLETE	15.24 (0.600)	33.02 (1.300)	25.92 (1.020)	37.08 (1.460)	33.02 (1.300)	22.86 (0.900)	14	499703-2
CBSOLETE	10.16 (0.400)	27.94 (1.100)	21.84 (0.860)	33.02 (1.300)	27.94 (1.100)	17.78 (0.700)	10	499703-1



DO NOT SCALE PRINT. UNLESS SPECIFIED DIMENSIONS IN MM (INCHES) TOLERANCES IN: 3 PLC DEC ± 0.14 (0.005) 2 PLC DEC ± 0.10 (0.004) 1 PLC DEC ± 0.075 (0.003) ANGLES ± 0.5°	DT 4-20-90 MILL CR 1-20-90 1.5002 APPD 1-28-90 1.6000 MAGLES -	AMP INCORPORATED MILITARY P.C. 7.8
PREPARED BY: J. W. BROWN CLASSIFIED BY: J. W. BROWN DATE: 04/27/90 PART: 499703-1 MATERIAL: 108 40018	APPROVED BY: J. W. BROWN DATE: 04/27/90 PART: 499703-1 MATERIAL: 108 40018	DATE: 1-22-95 PAGE CODE: D DRAWING NO: 499703 SCALE: 4:1 SHEET: 1 OF 1

CUSTOMER DRAWING