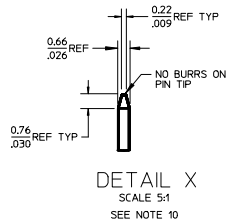
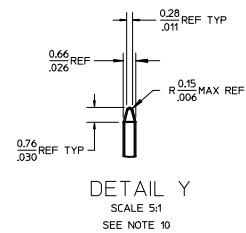


| NO. CKTS | DM. A | DM. B |
|----------|-------|-------|
| 2 | 5.08 | 2.54 |
| 3 | 7.62 | 5.08 |
| 4 | 10.16 | 7.62 |
| 5 | 12.70 | 10.16 |
| 6 | 15.24 | 12.70 |
| 7 | 17.78 | 15.24 |
| 8 | 20.32 | 17.78 |
| 9 | 22.86 | 20.32 |
| 10 | 25.40 | 22.86 |
| 11 | 27.94 | 25.40 |
| 12 | 30.48 | 27.94 |
| 13 | 33.02 | 30.48 |
| 14 | 35.56 | 33.02 |
| 15 | 38.10 | 35.56 |
| 16 | 40.64 | 38.10 |
| 17 | 43.18 | 40.64 |
| 18 | 45.72 | 43.18 |
| 19 | 48.26 | 45.72 |
| 20 | 50.80 | 48.26 |
| 21 | 53.34 | 50.80 |
| 22 | 55.88 | 53.34 |
| 23 | 58.42 | 55.88 |
| 24 | 60.96 | 58.42 |
| 25 | 63.50 | 60.96 |
| 26 | 66.04 | 63.50 |
| 27 | 68.58 | 66.04 |
| 28 | 71.12 | 68.58 |
| 29 | 73.66 | 71.12 |
| 30 | 76.20 | 73.66 |
| 31 | 78.74 | 76.20 |
| 32 | 81.28 | 78.74 |
| 33 | 83.82 | 81.28 |
| 34 | 86.36 | 83.82 |
| 35 | 88.90 | 86.36 |
| 36 | 91.44 | 88.90 |
| | 3.600 | 3.500 |



- NOTES:
- MATERIAL: GLASS FILLED NYLON
UL, 94V-0, COLOR: BLACK
 - FINISH: (SEE LAST 3 DIGITS OF PIN NUMBER)
(154) OVERALL TIN: 0.00254/0.000100 MIN. OVER
NICKEL: 0.00127/0.000050 MIN.
(118) OVERALL TIN: 0.00152/0.000060 MIN. OVER
NICKEL: 0.00127/0.000050 MIN.
(208) SELECT GOLD: 0.000381/0.000015 MIN.
* SELECT TIN: 0.00254/0.000100 MIN.
WITH OVERALL NICKEL UNDERPLATE: 0.00127/0.000050 MIN.
(228) SELECT GOLD: 0.00076/0.000030 MIN.
* SELECT TIN: 0.00254/0.000100 MIN.
WITH OVERALL NICKEL UNDERPLATE: 0.00127/0.000050 MIN.
 - PRODUCT SPECIFICATION PS 10-07.
 - PACKAGING INFORMATION: SEE TABLES
 - SOLDERABILITY PER SMES-62.
 - SEE SMES-42003 FOR ADDITIONAL INFORMATION ON KINK PIN DIRECTION AND PLACEMENT.
 - HEADERS ARE NOT STACKABLE ON 2.54/.100 CENTERS.
 - PIN PUSH OUT FORCE: 3 LBS. MIN
 - THIS PART CONFORMS TO CLASS B REQUIREMENTS OF COSMETIC SPECIFICATION PS-4599-002.
 - PIN TIP DIMENSIONS ARE SHOWN FOR REFERENCE ONLY. DIMENSIONS APPLY PRIOR TO PLATING OR ASSEMBLY.



| | |
|------|------|
| 2-x | T15 |
| 1 | T15 |
| SHT. | REV. |

ADD 42375-4236
EC NO. UCF2009-1249
DRAWN: JUPPER 2008/11/25
CHKD: BELL 2008/12/01
APPR: F. SMITH 2008/12/02

QUALITY SYMBOLS
▽=0
▽=0

| GENERAL TOLERANCES (UNLESS SPECIFIED) | |
|---------------------------------------|--------|
| mm | INCH |
| 4 PLACES ± --- | ± --- |
| 3 PLACES ± --- | ± .010 |
| 2 PLACES ± 0.25 | ± .015 |
| 1 PLACE ± 0.38 | ± --- |
| ANGULAR ± 1/2° | |

DRAFT WHERE APPLICABLE
MUST REMAIN WITHIN DIMENSIONS

| DIMENSION STYLE | | SCALE | DESIGN UNITS | THIRD ANGLE PROJECTION |
|-----------------|--------------|--|--------------|------------------------|
| MM/IN | | 2:1 | INCH | ☉ |
| DRAWN BY | DATE | TITLE | | |
| SCHAFFER | 11/3/03 | KK 100 HEADER ASSY FLAT VERTICAL BREAKAWAY | | |
| CHECKED BY | DATE | MOLEX INCORPORATED | | |
| SAMIEC | 2004/02/27 | MOLEX INCORPORATED | | |
| APPROVED BY | DATE | DOCUMENT NO. | | |
| MARGULIS | 2004/02/27 | SD-42375-001 | | |
| MATERIAL NO. | DOCUMENT NO. | SHEET NO. | | |
| SEE CHART | | 1 OF * | | |

THIS DRAWING CONTAINS INFORMATION THAT IS PROPRIETARY TO MOLEX INCORPORATED AND SHOULD NOT BE USED WITHOUT WRITTEN PERMISSION

42375

ENG. NO: A-42375-0002/0036

| HEADER NUMBER: | 42312-0036 | | | | |
|-------------------|--------------------|--------------|------|-----------------|--------------|
| PIN NUMBER: | 42663-ABA154 | | | | |
| PIN LENGTH: L | .455 / 11.56 | | | | |
| MATING LENGTH: M | .240 / 6.09 | | | | |
| GOLD POINT: G | N/A | | | | |
| PC TAIL LENGTH: P | .125 / 3.18 | | | | |
| TIN: T | OVERALL | | | | |
| CKTS: | 2-36 | | | | |
| KINKS: | NO | | | | |
| VOIDED CKTS: | NONE | | | | |
| PACKAGING: | BULK PK-40873-0041 | | | | |
| CKTS | MATERIAL NUMBER | ENG NUMBER | CKTS | MATERIAL NUMBER | ENG NUMBER |
| 02 | 22-28-4020 | A-42375-0002 | 20 | 22-28-4200 | A-42375-0020 |
| 03 | 22-28-4030 | A-42375-0003 | 21 | 22-28-4210 | A-42375-0021 |
| 04 | 22-28-4040 | A-42375-0004 | 22 | 22-28-4220 | A-42375-0022 |
| 05 | 22-28-4050 | A-42375-0005 | 23 | 22-28-4230 | A-42375-0023 |
| 06 | 22-28-4060 | A-42375-0006 | 24 | 22-28-4240 | A-42375-0024 |
| 07 | 22-28-4070 | A-42375-0007 | 25 | 22-28-4250 | A-42375-0025 |
| 08 | 22-28-4080 | A-42375-0008 | 26 | 22-28-4260 | A-42375-0026 |
| 09 | 22-28-4090 | A-42375-0009 | 27 | 22-28-4270 | A-42375-0027 |
| 10 | 22-28-4100 | A-42375-0010 | 28 | 22-28-4280 | A-42375-0028 |
| 11 | 22-28-4110 | A-42375-0011 | 29 | 22-28-4290 | A-42375-0029 |
| 12 | 22-28-4120 | A-42375-0012 | 30 | 22-28-4300 | A-42375-0030 |
| 13 | 22-28-4130 | A-42375-0013 | 31 | 22-28-4310 | A-42375-0031 |
| 14 | 22-28-4140 | A-42375-0014 | 32 | 22-28-4320 | A-42375-0032 |
| 15 | 22-28-4150 | A-42375-0015 | 33 | 22-28-4330 | A-42375-0033 |
| 16 | 22-28-4160 | A-42375-0016 | 34 | 22-28-4340 | A-42375-0034 |
| 17 | 22-28-4170 | A-42375-0017 | 35 | 22-28-4350 | A-42375-0035 |
| 18 | 22-28-4180 | A-42375-0018 | 36 | 22-28-4360 | A-42375-0036 |
| 19 | 22-28-4190 | A-42375-0019 | | | |

ENG. NO: A-42375-0037/0071

| HEADER NUMBER: | 42312-0036 | | | | |
|-------------------|--------------------|--------------|------|-----------------|--------------|
| PIN NUMBER: | 42663-ABB208 | | | | |
| PIN LENGTH: L | .455 / 11.56 | | | | |
| MATING LENGTH: M | .240 / 6.09 | | | | |
| GOLD POINT: G | .100 / 2.54 | | | | |
| PC TAIL LENGTH: P | .125 / 3.18 | | | | |
| TIN: T | .100 / 3.18 | | | | |
| CKTS: | 2-36 | | | | |
| KINKS: | NO | | | | |
| VOIDED CKTS: | NONE | | | | |
| PACKAGING: | BULK PK-40873-0041 | | | | |
| CKTS | MATERIAL NUMBER | ENG NUMBER | CKTS | MATERIAL NUMBER | ENG NUMBER |
| 02 | 22-28-4023 | A-42375-0037 | 20 | 22-28-4203 | A-42375-0055 |
| 03 | 22-28-4033 | A-42375-0038 | 21 | 22-28-4213 | A-42375-0056 |
| 04 | 22-28-4043 | A-42375-0039 | 22 | 22-28-4223 | A-42375-0057 |
| 05 | 22-28-4053 | A-42375-0040 | 23 | 22-28-4233 | A-42375-0058 |
| 06 | 22-28-4063 | A-42375-0041 | 24 | 22-28-4243 | A-42375-0059 |
| 07 | 22-28-4073 | A-42375-0042 | 25 | 22-28-4253 | A-42375-0060 |
| 08 | 22-28-4083 | A-42375-0043 | 26 | 22-28-4263 | A-42375-0061 |
| 09 | 22-28-4093 | A-42375-0044 | 27 | 22-28-4273 | A-42375-0062 |
| 10 | 22-28-4103 | A-42375-0045 | 28 | 22-28-4283 | A-42375-0063 |
| 11 | 22-28-4113 | A-42375-0046 | 29 | 22-28-4293 | A-42375-0064 |
| 12 | 22-28-4123 | A-42375-0047 | 30 | 22-28-4303 | A-42375-0065 |
| 13 | 22-28-4133 | A-42375-0048 | 31 | 22-28-4313 | A-42375-0066 |
| 14 | 22-28-4143 | A-42375-0049 | 32 | 22-28-4323 | A-42375-0067 |
| 15 | 22-28-4153 | A-42375-0050 | 33 | 22-28-4333 | A-42375-0068 |
| 16 | 22-28-4163 | A-42375-0051 | 34 | 22-28-4343 | A-42375-0069 |
| 17 | 22-28-4173 | A-42375-0052 | 35 | 22-28-4353 | A-42375-0070 |
| 18 | 22-28-4183 | A-42375-0053 | 36 | 22-28-4363 | A-42375-0071 |
| 19 | 22-28-4193 | A-42375-0054 | | | |

REV:

T15ECR/ECN INFORMATION:

EC No.: UCP2009-1249

DATE: 12/2/2008

TITLE:

**KK 100 HEADER ASSY
FLAT VERTICAL
BREAKAWAY**

SHEET No.**- 2 -**DOCUMENT NUMBER:**SD- 42375-001**CREATED / REVISED BY:**MKIPPER**CHECKED BY:**JBELL**APPROVED BY:**FSMITH**

TEMPLATE FILENAME: PRODUCT_SPEC(SIZE_A)(V.1).DOC

| ENG. NO: A-42375-0072/0106 | | | | | | ENG. NO: A-42375-0107/0141 | | | | | |
|---|-----------------|--|------|--|--------------|--|-----------------|--------------------------------------|------|----------------------------------|--------------|
| HEADER NUMBER: | | 42312-0036 | | | | HEADER NUMBER: | | 42312-0036 | | | |
| PIN NUMBER: | | 42663-ABB228 | | | | PIN NUMBER: | | 42663-ATA154 | | | |
| PIN LENGTH: L | | .455 / 11.56 | | | | PIN LENGTH: L | | .530 / 13.46 | | | |
| MATING LENGTH: M | | .240 / 6.09 | | | | MATING LENGTH: M | | .320 / 8.13 | | | |
| GOLD POINT: G | | .100 / 2.54 | | | | GOLD POINT: G | | N/A | | | |
| PC TAIL LENGTH: P | | .125 / 3.18 | | | | PC TAIL LENGTH: P | | .120 / 3.05 | | | |
| TIN: T | | .100 / 2.54 | | | | TIN: T | | OVERALL | | | |
| CKTS: | | 2-36 | | | | CKTS: | | 2-36 | | | |
| KINKS: | | NO | | | | KINKS: | | NO | | | |
| VOIDED CKTS: | | NONE | | | | VOIDED CKTS: | | NONE | | | |
| PACKAGING: | | BULK PK-40873-0041 | | | | PACKAGING: | | BULK PK-40873-0041 | | | |
| CKTS | MATERIAL NUMBER | ENG NUMBER | CKTS | MATERIAL NUMBER | ENG NUMBER | CKTS | MATERIAL NUMBER | ENG NUMBER | CKTS | MATERIAL NUMBER | ENG NUMBER |
| 02 | 22-28-4026 | A-42375-0072 | 20 | 22-28-4206 | A-42375-0090 | 02 | 22-28-4021 | A-42375-0107 | 20 | 22-28-4201 | A-42375-0125 |
| 03 | 22-28-4036 | A-42375-0073 | 21 | 22-28-4216 | A-42375-0091 | 03 | 22-28-4031 | A-42375-0108 | 21 | 22-28-4211 | A-42375-0126 |
| 04 | 22-28-4046 | A-42375-0074 | 22 | 22-28-4226 | A-42375-0092 | 04 | 22-28-4041 | A-42375-0109 | 22 | 22-28-4221 | A-42375-0127 |
| 05 | 22-28-4056 | A-42375-0075 | 23 | 22-28-4236 | A-42375-0093 | 05 | 22-28-4051 | A-42375-0110 | 23 | 22-28-4231 | A-42375-0128 |
| 06 | 22-28-4066 | A-42375-0076 | 24 | 22-28-4246 | A-42375-0094 | 06 | 22-28-4061 | A-42375-0111 | 24 | 22-28-4241 | A-42375-0129 |
| 07 | 22-28-4076 | A-42375-0077 | 25 | 22-28-4256 | A-42375-0095 | 07 | 22-28-4071 | A-42375-0112 | 25 | 22-28-4251 | A-42375-0130 |
| 08 | 22-28-4086 | A-42375-0078 | 26 | 22-28-4266 | A-42375-0096 | 08 | 22-28-4081 | A-42375-0113 | 26 | 22-28-4261 | A-42375-0131 |
| 09 | 22-28-4096 | A-42375-0079 | 27 | 22-28-4276 | A-42375-0097 | 09 | 22-28-4091 | A-42375-0114 | 27 | 22-28-4271 | A-42375-0132 |
| 10 | 22-28-4106 | A-42375-0080 | 28 | 22-28-4286 | A-42375-0098 | 10 | 22-28-4101 | A-42375-0115 | 28 | 22-28-4281 | A-42375-0133 |
| 11 | 22-28-4116 | A-42375-0081 | 29 | 22-28-4296 | A-42375-0099 | 11 | 22-28-4111 | A-42375-0116 | 29 | 22-28-4291 | A-42375-0134 |
| 12 | 22-28-4126 | A-42375-0082 | 30 | 22-28-4306 | A-42375-0100 | 12 | 22-28-4121 | A-42375-0117 | 30 | 22-28-4301 | A-42375-0135 |
| 13 | 22-28-4136 | A-42375-0083 | 31 | 22-28-4316 | A-42375-0101 | 13 | 22-28-4131 | A-42375-0118 | 31 | 22-28-4311 | A-42375-0136 |
| 14 | 22-28-4146 | A-42375-0084 | 32 | 22-28-4326 | A-42375-0102 | 14 | 22-28-4141 | A-42375-0119 | 32 | 22-28-4321 | A-42375-0137 |
| 15 | 22-28-4156 | A-42375-0085 | 33 | 22-28-4336 | A-42375-0103 | 15 | 22-28-4151 | A-42375-0120 | 33 | 22-28-4331 | A-42375-0138 |
| 16 | 22-28-4166 | A-42375-0086 | 34 | 22-28-4346 | A-42375-0104 | 16 | 22-28-4161 | A-42375-0121 | 34 | 22-28-4341 | A-42375-0139 |
| 17 | 22-28-4176 | A-42375-0087 | 35 | 22-28-4356 | A-42375-0105 | 17 | 22-28-4171 | A-42375-0122 | 35 | 22-28-4351 | A-42375-0140 |
| 18 | 22-28-4186 | A-42375-0088 | 36 | 22-28-4366 | A-42375-0106 | 18 | 22-28-4181 | A-42375-0123 | 36 | 22-28-4361 | A-42375-0141 |
| 19 | 22-28-4196 | A-42375-0089 | | | | 19 | 22-28-4191 | A-42375-0124 | | | |
| REV: T15 | | <u>ECR/ECN INFORMATION:</u> EC No.: UCP2009-1249 DATE: 12/2/2008 | | | | <u>TITLE:</u> KK 100 HEADER ASSY FLAT VERTICAL BREAKAWAY | | | | <u>SHEET No.</u> - 3 - | |
| <u>DOCUMENT NUMBER:</u> SD- 42375-001 | | | | <u>CREATED / REVISED BY:</u> MKIPPER | | <u>CHECKED BY:</u> JBELL | | <u>APPROVED BY:</u> FSMITH | | | |
| <small>TEMPLATE FILENAME: PRODUCT_SPEC(SIZE_A)(V.1).DOC</small> | | | | | | | | | | | |

42375

ENG. NO: A-42375-0142/0176

| | |
|-------------------|--------------------|
| HEADER NUMBER: | 42312-0036 |
| PIN NUMBER: | 42663-ATB208 |
| PIN LENGTH: L | .530 / 13.46 |
| MATING LENGTH: M | .320 / 8.13 |
| GOLD POINT: G | .140 / 3.56 |
| PC TAIL LENGTH: P | .120 / 3.05 |
| TIN: T | .135 / 3.43 |
| CKTS: | 2-36 |
| KINKS: | NO |
| VOIDED CKTS: | NONE |
| PACKAGING: | BULK PK-40873-0041 |

| CKTS | MATERIAL NUMBER | ENG NUMBER | CKTS | MATERIAL NUMBER | ENG NUMBER |
|------|-----------------|--------------|------|-----------------|--------------|
| 02 | 22-28-4024 | A-42375-0142 | 20 | 22-28-4204 | A-42375-0160 |
| 03 | 22-28-4034 | A-42375-0143 | 21 | 22-28-4214 | A-42375-0161 |
| 04 | 22-28-4044 | A-42375-0144 | 22 | 22-28-4224 | A-42375-0162 |
| 05 | 22-28-4054 | A-42375-0145 | 23 | 22-28-4234 | A-42375-0163 |
| 06 | 22-28-4064 | A-42375-0146 | 24 | 22-28-4244 | A-42375-0164 |
| 07 | 22-28-4074 | A-42375-0147 | 25 | 22-28-4254 | A-42375-0165 |
| 08 | 22-28-4084 | A-42375-0148 | 26 | 22-28-4264 | A-42375-0166 |
| 09 | 22-28-4094 | A-42375-0149 | 27 | 22-28-4274 | A-42375-0167 |
| 10 | 22-28-4104 | A-42375-0150 | 28 | 22-28-4284 | A-42375-0168 |
| 11 | 22-28-4114 | A-42375-0151 | 29 | 22-28-4294 | A-42375-0169 |
| 12 | 22-28-4124 | A-42375-0152 | 30 | 22-28-4304 | A-42375-0170 |
| 13 | 22-28-4134 | A-42375-0153 | 31 | 22-28-4314 | A-42375-0171 |
| 14 | 22-28-4144 | A-42375-0154 | 32 | 22-28-4324 | A-42375-0172 |
| 15 | 22-28-4154 | A-42375-0155 | 33 | 22-28-4334 | A-42375-0173 |
| 16 | 22-28-4164 | A-42375-0156 | 34 | 22-28-4344 | A-42375-0174 |
| 17 | 22-28-4174 | A-42375-0157 | 35 | 22-28-4354 | A-42375-0175 |
| 18 | 22-28-4184 | A-42375-0158 | 36 | 22-28-4364 | A-42375-0176 |
| 19 | 22-28-4194 | A-42375-0159 | | | |

ENG. NO: A-42375-0177/0211

| | |
|-------------------|--------------------|
| HEADER NUMBER: | 42312-0036 |
| PIN NUMBER: | 42663-ATB228 |
| PIN LENGTH: L | .530 / 13.46 |
| MATING LENGTH: M | .320 / 8.13 |
| GOLD POINT: G | .140 / 3.56 |
| PC TAIL LENGTH: P | .120 / 3.05 |
| TIN: T | .135 / 3.43 |
| CKTS: | 2-36 |
| KINKS: | NO |
| VOIDED CKTS: | NONE |
| PACKAGING: | BULK PK-40873-0041 |

| CKTS | MATERIAL NUMBER | ENG NUMBER | CKTS | MATERIAL NUMBER | ENG NUMBER |
|------|-----------------|--------------|------|-----------------|--------------|
| 02 | 22-28-4027 | A-42375-0177 | 20 | 22-28-4207 | A-42375-0195 |
| 03 | 22-28-4037 | A-42375-0178 | 21 | 22-28-4217 | A-42375-0196 |
| 04 | 22-28-4047 | A-42375-0179 | 22 | 22-28-4227 | A-42375-0197 |
| 05 | 22-28-4057 | A-42375-0180 | 23 | 22-28-4237 | A-42375-0198 |
| 06 | 22-28-4067 | A-42375-0181 | 24 | 22-28-4247 | A-42375-0199 |
| 07 | 22-28-4077 | A-42375-0182 | 25 | 22-28-4257 | A-42375-0200 |
| 08 | 22-28-4087 | A-42375-0183 | 26 | 22-28-4267 | A-42375-0201 |
| 09 | 22-28-4097 | A-42375-0184 | 27 | 22-28-4277 | A-42375-0202 |
| 10 | 22-28-4107 | A-42375-0185 | 28 | 22-28-4287 | A-42375-0203 |
| 11 | 22-28-4117 | A-42375-0186 | 29 | 22-28-4297 | A-42375-0204 |
| 12 | 22-28-4127 | A-42375-0187 | 30 | 22-28-4307 | A-42375-0205 |
| 13 | 22-28-4137 | A-42375-0188 | 31 | 22-28-4317 | A-42375-0206 |
| 14 | 22-28-4147 | A-42375-0189 | 32 | 22-28-4327 | A-42375-0207 |
| 15 | 22-28-4157 | A-42375-0190 | 33 | 22-28-4337 | A-42375-0208 |
| 16 | 22-28-4167 | A-42375-0191 | 34 | 22-28-4347 | A-42375-0209 |
| 17 | 22-28-4177 | A-42375-0192 | 35 | 22-28-4357 | A-42375-0210 |
| 18 | 22-28-4187 | A-42375-0193 | 36 | 22-28-4367 | A-42375-0211 |
| 19 | 22-28-4197 | A-42375-0194 | | | |

REV:

T15ECR/ECN INFORMATION:

EC No.: UCP2009-1249

DATE: 12/2/2008

TITLE:**KK 100 HEADER ASSY
FLAT VERTICAL
BREAKAWAY**SHEET No.**- 4 -**DOCUMENT NUMBER:**SD- 42375-001**CREATED / REVISED BY:**MKIPPER**CHECKED BY:**JBELL**APPROVED BY:**FSMITH**

TEMPLATE FILENAME: PRODUCT_SPEC(SIZE_A)(V.1).DOC

| ENG. NO: A-42375-0212/0246 | | | | | | ENG. NO: A-42375-0247/0281 | | | | | | | | | |
|---|-----------------|--|------|--|--------------|--|-----------------|------------------------------------|------|----------------------------------|--------------|--------------------------------------|--|--|--|
| HEADER NUMBER: | | 42312-0036 | | | | HEADER NUMBER: | | 42312-0036 | | | | | | | |
| PIN NUMBER: | | 42663-AMA154 | | | | PIN NUMBER: | | 42663-AMB208 | | | | | | | |
| PIN LENGTH: L | | .505 / 12.83 | | | | PIN LENGTH: L | | .505 / 12.83 | | | | | | | |
| MATING LENGTH: M | | .295 / 7.49 | | | | MATING LENGTH: M | | .295 / 7.49 | | | | | | | |
| GOLD POINT: G | | N/A | | | | GOLD POINT: G | | .140 / 3.56 | | | | | | | |
| PC TAIL LENGTH: P | | .120 / 3.05 | | | | PC TAIL LENGTH: P | | .120 / 3.05 | | | | | | | |
| TIN: T | | OVERALL | | | | TIN: T | | .135 / 3.43 | | | | | | | |
| CKTS: | | 2-36 | | | | CKTS: | | 2-36 | | | | | | | |
| KINKS: | | NO | | | | KINKS: | | NO | | | | | | | |
| VOIDED CKTS: | | NONE | | | | VOIDED CKTS: | | NONE | | | | | | | |
| PACKAGING: | | BULK PK-40873-0041 | | | | PACKAGING: | | BULK PK-40873-0041 | | | | | | | |
| CKTS | MATERIAL NUMBER | ENG NUMBER | CKTS | MATERIAL NUMBER | ENG NUMBER | CKTS | MATERIAL NUMBER | ENG NUMBER | CKTS | MATERIAL NUMBER | ENG NUMBER | | | | |
| 02 | 22-28-4022 | A-42375-0212 | 20 | 22-28-4202 | A-42375-0230 | 02 | 22-28-4025 | A-42375-0247 | 20 | 22-28-4205 | A-42375-0265 | | | | |
| 03 | 22-28-4032 | A-42375-0213 | 21 | 22-28-4212 | A-42375-0231 | 03 | 22-28-4035 | A-42375-0248 | 21 | 22-28-4215 | A-42375-0266 | | | | |
| 04 | 22-28-4042 | A-42375-0214 | 22 | 22-28-4222 | A-42375-0232 | 04 | 22-28-4045 | A-42375-0249 | 22 | 22-28-4225 | A-42375-0267 | | | | |
| 05 | 22-28-4052 | A-42375-0215 | 23 | 22-28-4232 | A-42375-0233 | 05 | 22-28-4055 | A-42375-0250 | 23 | 22-28-4235 | A-42375-0268 | | | | |
| 06 | 22-28-4062 | A-42375-0216 | 24 | 22-28-4242 | A-42375-0234 | 06 | 22-28-4065 | A-42375-0251 | 24 | 22-28-4245 | A-42375-0269 | | | | |
| 07 | 22-28-4072 | A-42375-0217 | 25 | 22-28-4252 | A-42375-0235 | 07 | 22-28-4075 | A-42375-0252 | 25 | 22-28-4255 | A-42375-0270 | | | | |
| 08 | 22-28-4082 | A-42375-0218 | 26 | 22-28-4262 | A-42375-0236 | 08 | 22-28-4085 | A-42375-0253 | 26 | 22-28-4265 | A-42375-0271 | | | | |
| 09 | 22-28-4092 | A-42375-0219 | 27 | 22-28-4272 | A-42375-0237 | 09 | 22-28-4095 | A-42375-0254 | 27 | 22-28-4275 | A-42375-0272 | | | | |
| 10 | 22-28-4102 | A-42375-0220 | 28 | 22-28-4282 | A-42375-0238 | 10 | 22-28-4105 | A-42375-0255 | 28 | 22-28-4285 | A-42375-0273 | | | | |
| 11 | 22-28-4112 | A-42375-0221 | 29 | 22-28-4292 | A-42375-0239 | 11 | 22-28-4115 | A-42375-0256 | 29 | 22-28-4295 | A-42375-0274 | | | | |
| 12 | 22-28-4122 | A-42375-0222 | 30 | 22-28-4302 | A-42375-0240 | 12 | 22-28-4125 | A-42375-0257 | 30 | 22-28-4305 | A-42375-0275 | | | | |
| 13 | 22-28-4132 | A-42375-0223 | 31 | 22-28-4312 | A-42375-0241 | 13 | 22-28-4135 | A-42375-0258 | 31 | 22-28-4315 | A-42375-0276 | | | | |
| 14 | 22-28-4142 | A-42375-0224 | 32 | 22-28-4322 | A-42375-0242 | 14 | 22-28-4145 | A-42375-0259 | 32 | 22-28-4325 | A-42375-0277 | | | | |
| 15 | 22-28-4152 | A-42375-0225 | 33 | 22-28-4332 | A-42375-0243 | 15 | 22-28-4155 | A-42375-0260 | 33 | 22-28-4335 | A-42375-0278 | | | | |
| 16 | 22-28-4162 | A-42375-0226 | 34 | 22-28-4342 | A-42375-0244 | 16 | 22-28-4165 | A-42375-0261 | 34 | 22-28-4345 | A-42375-0279 | | | | |
| 17 | 22-28-4172 | A-42375-0227 | 35 | 22-28-4352 | A-42375-0245 | 17 | 22-28-4175 | A-42375-0262 | 35 | 22-28-4355 | A-42375-0280 | | | | |
| 18 | 22-28-4182 | A-42375-0228 | 36 | 22-28-4362 | A-42375-0246 | 18 | 22-28-4185 | A-42375-0263 | 36 | 22-28-4365 | A-42375-0281 | | | | |
| 19 | 22-28-4192 | A-42375-0229 | | | | 19 | 22-28-4195 | A-42375-0264 | | | | | | | |
| REV: T15 | | <u>ECR/ECN INFORMATION:</u> EC No.: UCP2009-1249 DATE: 12/2/2008 | | | | <u>TITLE:</u> KK 100 HEADER ASSY FLAT VERTICAL BREAKAWAY | | | | <u>SHEET No.</u> - 5 - | | | | | |
| <u>DOCUMENT NUMBER:</u> SD- 42375-001 | | | | <u>CREATED / REVISED BY:</u> MKIPPER | | | | <u>CHECKED BY:</u> JBELL | | | | <u>APPROVED BY:</u> FSMITH | | | |

42375

ENG. NO: A-42375-0282/0316

| | |
|-------------------|--------------------|
| HEADER NUMBER: | 42312-0036 |
| PIN NUMBER: | 42663-AMB228 |
| PIN LENGTH: L | .505 / 12.83 |
| MATING LENGTH: M | .295 / 7.49 |
| GOLD POINT: G | .140 / 3.56 |
| PC TAIL LENGTH: P | .120 / 3.05 |
| TIN: T | .135 / 3.43 |
| CKTS: | 2-36 |
| KINKS: | NO |
| VOIDED CKTS: | NONE |
| PACKAGING: | BULK PK-40873-0041 |

| CKTS | MATERIAL NUMBER | ENG NUMBER | CKTS | MATERIAL NUMBER | ENG NUMBER |
|------|-----------------|--------------|------|-----------------|--------------|
| 02 | 22-28-4028 | A-42375-0282 | 20 | 22-28-4208 | A-42375-0300 |
| 03 | 22-28-4038 | A-42375-0283 | 21 | 22-28-4218 | A-42375-0301 |
| 04 | 22-28-4048 | A-42375-0284 | 22 | 22-28-4228 | A-42375-0302 |
| 05 | 22-28-4058 | A-42375-0285 | 23 | 22-28-4238 | A-42375-0303 |
| 06 | 22-28-4068 | A-42375-0286 | 24 | 22-28-4248 | A-42375-0304 |
| 07 | 22-28-4078 | A-42375-0287 | 25 | 22-28-4258 | A-42375-0305 |
| 08 | 22-28-4088 | A-42375-0288 | 26 | 22-28-4268 | A-42375-0306 |
| 09 | 22-28-4098 | A-42375-0289 | 27 | 22-28-4278 | A-42375-0307 |
| 10 | 22-28-4108 | A-42375-0290 | 28 | 22-28-4288 | A-42375-0308 |
| 11 | 22-28-4118 | A-42375-0291 | 29 | 22-28-4298 | A-42375-0309 |
| 12 | 22-28-4128 | A-42375-0192 | 30 | 22-28-4308 | A-42375-0310 |
| 13 | 22-28-4138 | A-42375-0293 | 31 | 22-28-4318 | A-42375-0311 |
| 14 | 22-28-4148 | A-42375-0294 | 32 | 22-28-4328 | A-42375-0312 |
| 15 | 22-28-4158 | A-42375-0295 | 33 | 22-28-4338 | A-42375-0313 |
| 16 | 22-28-4168 | A-42375-0296 | 34 | 22-28-4348 | A-42375-0314 |
| 17 | 22-28-4178 | A-42375-0297 | 35 | 22-28-4358 | A-42375-0315 |
| 18 | 22-28-4188 | A-42375-0298 | 36 | 22-28-4368 | A-42375-0316 |
| 19 | 22-28-4198 | A-42375-0299 | | | |

ENG. NO: A-42375-0317/0351

| | |
|-------------------|--------------------|
| HEADER NUMBER: | 42312-0036 |
| PIN NUMBER: | 42663-ADA154 |
| PIN LENGTH: L | .465 / 11.81 |
| MATING LENGTH: M | .240 / 6.09 |
| GOLD POINT: G | N/A |
| PC TAIL LENGTH: P | .135 / 3.43 |
| TIN: T | OVERALL |
| CKTS: | 2-36 |
| KINKS: | SMES-42003 |
| VOIDED CKTS: | NONE |
| PACKAGING: | BULK PK-40873-0041 |

| CKTS | MATERIAL NUMBER | ENG NUMBER | CKTS | MATERIAL NUMBER | ENG NUMBER |
|------|-----------------|--------------|------|-----------------|--------------|
| 02 | 22-28-5020 | A-42375-0317 | 20 | 22-28-5200 | A-42375-0335 |
| 03 | 22-28-5030 | A-42375-0318 | 21 | 22-28-5210 | A-42375-0336 |
| 04 | 22-28-5040 | A-42375-0319 | 22 | 22-28-5220 | A-42375-0337 |
| 05 | 22-28-5050 | A-42375-0320 | 23 | 22-28-5230 | A-42375-0338 |
| 06 | 22-28-5060 | A-42375-0321 | 24 | 22-28-5240 | A-42375-0339 |
| 07 | 22-28-5070 | A-42375-0322 | 25 | 22-28-5250 | A-42375-0340 |
| 08 | 22-28-5080 | A-42375-0323 | 26 | 22-28-5260 | A-42375-0341 |
| 09 | 22-28-5090 | A-42375-0324 | 27 | 22-28-5270 | A-42375-0342 |
| 10 | 22-28-5100 | A-42375-0325 | 28 | 22-28-5280 | A-42375-0343 |
| 11 | 22-28-5110 | A-42375-0326 | 29 | 22-28-5290 | A-42375-0344 |
| 12 | 22-28-5120 | A-42375-0327 | 30 | 22-28-5300 | A-42375-0345 |
| 13 | 22-28-5130 | A-42375-0328 | 31 | 22-28-5310 | A-42375-0346 |
| 14 | 22-28-5140 | A-42375-0329 | 32 | 22-28-5320 | A-42375-0347 |
| 15 | 22-28-5150 | A-42375-0330 | 33 | 22-28-5330 | A-42375-0348 |
| 16 | 22-28-5160 | A-42375-0331 | 34 | 22-28-5340 | A-42375-0349 |
| 17 | 22-28-5170 | A-42375-0332 | 35 | 22-28-5350 | A-42375-0350 |
| 18 | 22-28-5180 | A-42375-0333 | 36 | 22-28-5360 | A-42375-0351 |
| 19 | 22-28-5190 | A-42375-0334 | | | |

REV:

T15ECR/ECN INFORMATION:

EC No.: UCP2009-1249

DATE: 12/2/2008

TITLE:

**KK 100 HEADER ASSY
FLAT VERTICAL
BREAKAWAY**

SHEET No.**- 6 -**DOCUMENT NUMBER:**SD- 42375-001**CREATED / REVISED BY:**MKIPPER**CHECKED BY:**JBELL**APPROVED BY:**FSMITH**

TEMPLATE FILENAME: PRODUCT_SPEC(SIZE_A)(V.1).DOC

42375

ENG. NO: A-42375-0352/0386

| | | | | | |
|-------------------|--------------------|--------------|------|-----------------|--------------|
| HEADER NUMBER: | 42312-0036 | | | | |
| PIN NUMBER: | 42663-ADB208 | | | | |
| PIN LENGTH: L | .465 / 11.81 | | | | |
| MATING LENGTH: M | .240 / 6.09 | | | | |
| GOLD POINT: G | .100 / 2.54 | | | | |
| PC TAIL LENGTH: P | .135 / 3.43 | | | | |
| TIN: T | .100 / 2.54 | | | | |
| CKTS: | 2-36 | | | | |
| KINKS: | SMES-42003 | | | | |
| VOIDED CKTS: | NONE | | | | |
| PACKAGING: | BULK PK-40873-0041 | | | | |
| CKTS | MATERIAL NUMBER | ENG NUMBER | CKTS | MATERIAL NUMBER | ENG NUMBER |
| 02 | 22-28-5023 | A-42375-0352 | 20 | 22-28-5203 | A-42375-0370 |
| 03 | 22-28-5033 | A-42375-0353 | 21 | 22-28-5213 | A-42375-0371 |
| 04 | 22-28-5043 | A-42375-0354 | 22 | 22-28-5223 | A-42375-0372 |
| 05 | 22-28-5053 | A-42375-0355 | 23 | 22-28-5233 | A-42375-0373 |
| 06 | 22-28-5063 | A-42375-0356 | 24 | 22-28-5243 | A-42375-0374 |
| 07 | 22-28-5073 | A-42375-0357 | 25 | 22-28-5253 | A-42375-0375 |
| 08 | 22-28-5083 | A-42375-0358 | 26 | 22-28-5263 | A-42375-0376 |
| 09 | 22-28-5093 | A-42375-0359 | 27 | 22-28-5273 | A-42375-0377 |
| 10 | 22-28-5103 | A-42375-0360 | 28 | 22-28-5283 | A-42375-0378 |
| 11 | 22-28-5113 | A-42375-0361 | 29 | 22-28-5293 | A-42375-0379 |
| 12 | 22-28-5123 | A-42375-0362 | 30 | 22-28-5303 | A-42375-0380 |
| 13 | 22-28-5133 | A-42375-0363 | 31 | 22-28-5313 | A-42375-0381 |
| 14 | 22-28-5143 | A-42375-0364 | 32 | 22-28-5323 | A-42375-0382 |
| 15 | 22-28-5153 | A-42375-0365 | 33 | 22-28-5333 | A-42375-0383 |
| 16 | 22-28-5163 | A-42375-0366 | 34 | 22-28-5343 | A-42375-0384 |
| 17 | 22-28-5173 | A-42375-0367 | 35 | 22-28-5353 | A-42375-0385 |
| 18 | 22-28-5183 | A-42375-0368 | 36 | 22-28-5363 | A-42375-0386 |
| 19 | 22-28-5193 | A-42375-0369 | | | |

ENG. NO: A-42375-0387/0421

| | | | | | |
|-------------------|--------------------|--------------|------|-----------------|--------------|
| HEADER NUMBER: | 42312-0036 | | | | |
| PIN NUMBER: | 42663-ADB228 | | | | |
| PIN LENGTH: L | .465 / 11.81 | | | | |
| MATING LENGTH: M | .240 / 6.09 | | | | |
| GOLD POINT: G | .100 / 2.54 | | | | |
| PC TAIL LENGTH: P | .135 / 3.43 | | | | |
| TIN: T | .100 / 2.54 | | | | |
| CKTS: | 2-36 | | | | |
| KINKS: | SMES-42003 | | | | |
| VOIDED CKTS: | NONE | | | | |
| PACKAGING: | BULK PK-40873-0041 | | | | |
| CKTS | MATERIAL NUMBER | ENG NUMBER | CKTS | MATERIAL NUMBER | ENG NUMBER |
| 02 | 22-28-5026 | A-42375-0387 | 20 | 22-28-5206 | A-42375-0405 |
| 03 | 22-28-5036 | A-42375-0388 | 21 | 22-28-5216 | A-42375-0406 |
| 04 | 22-28-5046 | A-42375-0389 | 22 | 22-28-5226 | A-42375-0407 |
| 05 | 22-28-5056 | A-42375-0390 | 23 | 22-28-5236 | A-42375-0408 |
| 06 | 22-28-5066 | A-42375-0391 | 24 | 22-28-5246 | A-42375-0409 |
| 07 | 22-28-5076 | A-42375-0392 | 25 | 22-28-5256 | A-42375-0410 |
| 08 | 22-28-5086 | A-42375-0393 | 26 | 22-28-5266 | A-42375-0411 |
| 09 | 22-28-5096 | A-42375-0394 | 27 | 22-28-5276 | A-42375-0412 |
| 10 | 22-28-5106 | A-42375-0395 | 28 | 22-28-5286 | A-42375-0413 |
| 11 | 22-28-5116 | A-42375-0396 | 29 | 22-28-5296 | A-42375-0414 |
| 12 | 22-28-5126 | A-42375-0397 | 30 | 22-28-5306 | A-42375-0415 |
| 13 | 22-28-5136 | A-42375-0398 | 31 | 22-28-5316 | A-42375-0416 |
| 14 | 22-28-5146 | A-42375-0399 | 32 | 22-28-5326 | A-42375-0417 |
| 15 | 22-28-5156 | A-42375-0400 | 33 | 22-28-5336 | A-42375-0418 |
| 16 | 22-28-5166 | A-42375-0401 | 34 | 22-28-5346 | A-42375-0419 |
| 17 | 22-28-5176 | A-42375-0402 | 35 | 22-28-5356 | A-42375-0420 |
| 18 | 22-28-5186 | A-42375-0403 | 36 | 22-28-5366 | A-42375-0421 |
| 19 | 22-28-5196 | A-42375-0404 | | | |

REV:

T15ECR/ECN INFORMATION:

EC No.: UCP2009-1249

DATE: 12/2/2008

TITLE:**KK 100 HEADER ASSY
FLAT VERTICAL
BREAKAWAY**SHEET No.**- 7 -**DOCUMENT NUMBER:**SD- 42375-001**CREATED / REVISED BY:**MKIPPER**CHECKED BY:**JBELL**APPROVED BY:**FSMITH**

TEMPLATE FILENAME: PRODUCT_SPEC(SIZE_A)(V.1).DOC

42375

| ENG. NO: A-42375-0422/0456 | | | | | | ENG. NO: A-42375-0457/0491 | | | | | |
|--|-----------------|--------------|---|-----------------|--------------|---|-----------------|--------------|-------------------------------|-----------------|--------------|
| HEADER NUMBER: | | | 42312-0036 | | | HEADER NUMBER: | | | 42312-0036 | | |
| PIN NUMBER: | | | 42663-AYA154 | | | PIN NUMBER: | | | 42663-AYB208 | | |
| PIN LENGTH: L | | | .545 / 13.84 | | | PIN LENGTH: L | | | .545 / 13.84 | | |
| MATING LENGTH: M | | | .320 / 8.13 | | | MATING LENGTH: M | | | .320 / 8.13 | | |
| GOLD POINT: G | | | N/A | | | GOLD POINT: G | | | .140 / 3.56 | | |
| PC TAIL LENGTH: P | | | .135 / 3.43 | | | PC TAIL LENGTH: P | | | .135 / 3.43 | | |
| TIN: T | | | OVERALL | | | TIN: T | | | .135 / 3.43 | | |
| CKTS: | | | 2-36 | | | CKTS: | | | 2-36 | | |
| KINKS: | | | SMES-42003 | | | KINKS: | | | SMES-42003 | | |
| VOIDED CKTS: | | | NONE | | | VOIDED CKTS: | | | NONE | | |
| PACKAGING: | | | BULK PK-40873-0041 | | | PACKAGING: | | | BULK PK-40873-0041 | | |
| CKTS | MATERIAL NUMBER | ENG NUMBER | CKTS | MATERIAL NUMBER | ENG NUMBER | CKTS | MATERIAL NUMBER | ENG NUMBER | CKTS | MATERIAL NUMBER | ENG NUMBER |
| 02 | 22-28-5021 | A-42375-0422 | 20 | 22-28-5201 | A-42375-0440 | 02 | 22-28-5024 | A-42375-0457 | 20 | 22-28-5204 | A-42375-0475 |
| 03 | 22-28-5031 | A-42375-0423 | 21 | 22-28-5211 | A-42375-0441 | 03 | 22-28-5034 | A-42375-0458 | 21 | 22-28-5214 | A-42375-0476 |
| 04 | 22-28-5041 | A-42375-0424 | 22 | 22-28-5221 | A-42375-0442 | 04 | 22-28-5044 | A-42375-0459 | 22 | 22-28-5224 | A-42375-0477 |
| 05 | 22-28-5051 | A-42375-0425 | 23 | 22-28-5231 | A-42375-0443 | 05 | 22-28-5054 | A-42375-0460 | 23 | 22-28-5234 | A-42375-0478 |
| 06 | 22-28-5061 | A-42375-0426 | 24 | 22-28-5241 | A-42375-0444 | 06 | 22-28-5064 | A-42375-0461 | 24 | 22-28-5244 | A-42375-0479 |
| 07 | 22-28-5071 | A-42375-0427 | 25 | 22-28-5251 | A-42375-0445 | 07 | 22-28-5074 | A-42375-0462 | 25 | 22-28-5254 | A-42375-0480 |
| 08 | 22-28-5081 | A-42375-0428 | 26 | 22-28-5261 | A-42375-0446 | 08 | 22-28-5084 | A-42375-0463 | 26 | 22-28-5264 | A-42375-0481 |
| 09 | 22-28-5091 | A-42375-0429 | 27 | 22-28-5271 | A-42375-0447 | 09 | 22-28-5094 | A-42375-0464 | 27 | 22-28-5274 | A-42375-0482 |
| 10 | 22-28-5101 | A-42375-0430 | 28 | 22-28-5281 | A-42375-0448 | 10 | 22-28-5104 | A-42375-0465 | 28 | 22-28-5284 | A-42375-0483 |
| 11 | 22-28-5111 | A-42375-0431 | 29 | 22-28-5291 | A-42375-0449 | 11 | 22-28-5114 | A-42375-0466 | 29 | 22-28-5294 | A-42375-0484 |
| 12 | 22-28-5121 | A-42375-0432 | 30 | 22-28-5301 | A-42375-0450 | 12 | 22-28-5124 | A-42375-0467 | 30 | 22-28-5304 | A-42375-0485 |
| 13 | 22-28-5131 | A-42375-0433 | 31 | 22-28-5311 | A-42375-0451 | 13 | 22-28-5134 | A-42375-0468 | 31 | 22-28-5314 | A-42375-0486 |
| 14 | 22-28-5141 | A-42375-0434 | 32 | 22-28-5321 | A-42375-0452 | 14 | 22-28-5144 | A-42375-0469 | 32 | 22-28-5324 | A-42375-0487 |
| 15 | 22-28-5151 | A-42375-0435 | 33 | 22-28-5331 | A-42375-0453 | 15 | 22-28-5154 | A-42375-0470 | 33 | 22-28-5334 | A-42375-0488 |
| 16 | 22-28-5161 | A-42375-0436 | 34 | 22-28-5341 | A-42375-0454 | 16 | 22-28-5164 | A-42375-0471 | 34 | 22-28-5344 | A-42375-0489 |
| 17 | 22-28-5171 | A-42375-0437 | 35 | 22-28-5351 | A-42375-0455 | 17 | 22-28-5174 | A-42375-0472 | 35 | 22-28-5354 | A-42375-0490 |
| 18 | 22-28-5181 | A-42375-0438 | 36 | 22-28-5361 | A-42375-0456 | 18 | 22-28-5184 | A-42375-0473 | 36 | 22-28-5364 | A-42375-0491 |
| 19 | 22-28-5191 | A-42375-0439 | | | | 19 | 22-28-5194 | A-42375-0474 | | | |
| REV: T15 | | | ECR/ECN INFORMATION: EC No.: UCP2009-1249 DATE: 12/2/2008 | | | TITLE: KK 100 HEADER ASSY FLAT VERTICAL BREAKAWAY | | | SHEET No. - 8 - | | |
| DOCUMENT NUMBER: SD- 42375-001 | | | CREATED / REVISED BY: MKIPPER | | | CHECKED BY: JBELL | | | APPROVED BY: FSMITH | | |
| TEMPLATE FILENAME: PRODUCT_SPEC(SIZE_A)(V.1).DOC | | | | | | | | | | | |

42375

| ENG. NO: A-42375-0492/0526 | | | | | | ENG. NO: A-42375-0527/0561 | | | | | |
|--|-----------------|--------------|---|---|--------------|---|-----------------|-------------------------------|---------------------------|-----------------|--------------|
| HEADER NUMBER: | | | 42312-0036 | | | HEADER NUMBER: | | | 42312-0036 | | |
| PIN NUMBER: | | | 42663-AYB228 | | | PIN NUMBER: | | | 42663-ARA154 | | |
| PIN LENGTH: L | | | .545 / 13.84 | | | PIN LENGTH: L | | | .520 / 13.21 | | |
| MATING LENGTH: M | | | .320 / 8.13 | | | MATING LENGTH: M | | | .295 / 7.49 | | |
| GOLD POINT: G | | | .140 / 3.56 | | | GOLD POINT: G | | | N/A | | |
| PC TAIL LENGTH: P | | | .135 / 3.43 | | | PC TAIL LENGTH: P | | | .135 / 3.43 | | |
| TIN: T | | | .135 / 3.43 | | | TIN: T | | | OVERALL | | |
| CKTS: | | | 2-36 | | | CKTS: | | | 2-36 | | |
| KINKS: | | | SMES-42003 | | | KINKS: | | | SMES-42003 | | |
| VOIDED CKTS: | | | NONE | | | VOIDED CKTS: | | | NONE | | |
| PACKAGING: | | | BULK PK-40873-0041 | | | PACKAGING: | | | BULK PK-40873-0041 | | |
| CKTS | MATERIAL NUMBER | ENG NUMBER | CKTS | MATERIAL NUMBER | ENG NUMBER | CKTS | MATERIAL NUMBER | ENG NUMBER | CKTS | MATERIAL NUMBER | ENG NUMBER |
| 02 | 22-28-5027 | A-42375-0492 | 20 | 22-28-5207 | A-42375-0510 | 02 | 22-28-5022 | A-42375-0527 | 20 | 22-28-5202 | A-42375-0545 |
| 03 | 22-28-5037 | A-42375-0493 | 21 | 22-28-5217 | A-42375-0511 | 03 | 22-28-5032 | A-42375-0528 | 21 | 22-28-5212 | A-42375-0546 |
| 04 | 22-28-5047 | A-42375-0494 | 22 | 22-28-5227 | A-42375-0512 | 04 | 22-28-5042 | A-42375-0529 | 22 | 22-28-5222 | A-42375-0547 |
| 05 | 22-28-5057 | A-42375-0495 | 23 | 22-28-5237 | A-42375-0513 | 05 | 22-28-5052 | A-42375-0530 | 23 | 22-28-5232 | A-42375-0548 |
| 06 | 22-28-5067 | A-42375-0496 | 24 | 22-28-5247 | A-42375-0514 | 06 | 22-28-5062 | A-42375-0531 | 24 | 22-28-5242 | A-42375-0549 |
| 07 | 22-28-5077 | A-42375-0497 | 25 | 22-28-5257 | A-42375-0515 | 07 | 22-28-5072 | A-42375-0532 | 25 | 22-28-5252 | A-42375-0550 |
| 08 | 22-28-5087 | A-42375-0498 | 26 | 22-28-5267 | A-42375-0516 | 08 | 22-28-5082 | A-42375-0533 | 26 | 22-28-5262 | A-42375-0551 |
| 09 | 22-28-5097 | A-42375-0499 | 27 | 22-28-5277 | A-42375-0517 | 09 | 22-28-5092 | A-42375-0534 | 27 | 22-28-5272 | A-42375-0552 |
| 10 | 22-28-5107 | A-42375-0500 | 28 | 22-28-5287 | A-42375-0518 | 10 | 22-28-5102 | A-42375-0535 | 28 | 22-28-5282 | A-42375-0553 |
| 11 | 22-28-5117 | A-42375-0501 | 29 | 22-28-5297 | A-42375-0519 | 11 | 22-28-5112 | A-42375-0536 | 29 | 22-28-5292 | A-42375-0554 |
| 12 | 22-28-5127 | A-42375-0502 | 30 | 22-28-5307 | A-42375-0520 | 12 | 22-28-5122 | A-42375-0537 | 30 | 22-28-5302 | A-42375-0555 |
| 13 | 22-28-5137 | A-42375-0503 | 31 | 22-28-5317 | A-42375-0521 | 13 | 22-28-5132 | A-42375-0538 | 31 | 22-28-5312 | A-42375-0556 |
| 14 | 22-28-5147 | A-42375-0504 | 32 | 22-28-5327 | A-42375-0522 | 14 | 22-28-5142 | A-42375-0539 | 32 | 22-28-5322 | A-42375-0557 |
| 15 | 22-28-5157 | A-42375-0505 | 33 | 22-28-5337 | A-42375-0523 | 15 | 22-28-5152 | A-42375-0540 | 33 | 22-28-5332 | A-42375-0558 |
| 16 | 22-28-5167 | A-42375-0506 | 34 | 22-28-5347 | A-42375-0524 | 16 | 22-28-5162 | A-42375-0541 | 34 | 22-28-5342 | A-42375-0559 |
| 17 | 22-28-5177 | A-42375-0507 | 35 | 22-28-5357 | A-42375-0525 | 17 | 22-28-5172 | A-42375-0542 | 35 | 22-28-5352 | A-42375-0560 |
| 18 | 22-28-5187 | A-42375-0508 | 36 | 22-28-5367 | A-42375-0526 | 18 | 22-28-5182 | A-42375-0543 | 36 | 22-28-5362 | A-42375-0561 |
| 19 | 22-28-5197 | A-42375-0509 | | | | 19 | 22-28-5192 | A-42375-0544 | | | |
| REV: T15 | | | ECR/ECN INFORMATION: EC No.: UCP2009-1249 DATE: 12/2/2008 | | | TITLE: KK 100 HEADER ASSY FLAT VERTICAL BREAKAWAY | | | SHEET No. - 9 - | | |
| DOCUMENT NUMBER: SD- 42375-001 | | | | CREATED / REVISED BY: MKIPPER | | CHECKED BY: JBELL | | APPROVED BY: FSMITH | | | |
| TEMPLATE FILENAME: PRODUCT_SPEC(SIZE_A)(V.1).DOC | | | | | | | | | | | |

42375

| ENG. NO: A-42375-0562/0596 | | | | | | ENG. NO: A-42375-0597/0631 | | | | | |
|--|-----------------|--------------|---|-----------------|--------------|---|-----------------|--------------|-------------------------------|-----------------|--------------|
| HEADER NUMBER: | | | 42312-0036 | | | HEADER NUMBER: | | | 42312-0036 | | |
| PIN NUMBER: | | | 42663-ARB208 | | | PIN NUMBER: | | | 42663-ARB228 | | |
| PIN LENGTH: L | | | .520 / 13.21 | | | PIN LENGTH: L | | | .520 / 13.21 | | |
| MATING LENGTH: M | | | .295 / 7.49 | | | MATING LENGTH: M | | | .295 / 7.49 | | |
| GOLD POINT: G | | | .140 / 3.56 | | | GOLD POINT: G | | | .140 / 3.56 | | |
| PC TAIL LENGTH: P | | | .135 / 3.43 | | | PC TAIL LENGTH: P | | | .135 / 3.43 | | |
| TIN: T | | | .135 / 3.43 | | | TIN: T | | | .135 / 3.43 | | |
| CKTS: | | | 2-36 | | | CKTS: | | | 2-36 | | |
| KINKS: | | | SMES-42003 | | | KINKS: | | | SM ES-42003 | | |
| VOIDED CKTS: | | | NONE | | | VOIDED CKTS: | | | NONE | | |
| PACKAGING: | | | BULK PK-40873-0041 | | | PACKAGING: | | | BULK PK-40873-0041 | | |
| CKTS | MATERIAL NUMBER | ENG NUMBER | CKTS | MATERIAL NUMBER | ENG NUMBER | CKTS | MATERIAL NUMBER | ENG NUMBER | CKTS | MATERIAL NUMBER | ENG NUMBER |
| 02 | 22-28-5025 | A-42375-0562 | 20 | 22-28-5205 | A-42375-0580 | 02 | 22-28-5028 | A-42375-0597 | 20 | 22-28-5208 | A-42375-0615 |
| 03 | 22-28-5035 | A-42375-0563 | 21 | 22-28-5215 | A-42375-0581 | 03 | 22-28-5038 | A-42375-0598 | 21 | 22-28-5218 | A-42375-0616 |
| 04 | 22-28-5045 | A-42375-0564 | 22 | 22-28-5225 | A-42375-0582 | 04 | 22-28-5048 | A-42375-0599 | 22 | 22-28-5228 | A-42375-0617 |
| 05 | 22-28-5055 | A-42375-0565 | 23 | 22-28-5235 | A-42375-0583 | 05 | 22-28-5058 | A-42375-0600 | 23 | 22-28-5238 | A-42375-0618 |
| 06 | 22-28-5065 | A-42375-0566 | 24 | 22-28-5245 | A-42375-0584 | 06 | 22-28-5068 | A-42375-0601 | 24 | 22-28-5248 | A-42375-0619 |
| 07 | 22-28-5075 | A-42375-0567 | 25 | 22-28-5255 | A-42375-0585 | 07 | 22-28-5078 | A-42375-0602 | 25 | 22-28-5258 | A-42375-0620 |
| 08 | 22-28-5085 | A-42375-0568 | 26 | 22-28-5265 | A-42375-0586 | 08 | 22-28-5088 | A-42375-0603 | 26 | 22-28-5268 | A-42375-0621 |
| 09 | 22-28-5095 | A-42375-0569 | 27 | 22-28-5275 | A-42375-0587 | 09 | 22-28-5098 | A-42375-0604 | 27 | 22-28-5278 | A-42375-0622 |
| 10 | 22-28-5105 | A-42375-0570 | 28 | 22-28-5285 | A-42375-0588 | 10 | 22-28-5108 | A-42375-0605 | 28 | 22-28-5288 | A-42375-0623 |
| 11 | 22-28-5115 | A-42375-0571 | 29 | 22-28-5295 | A-42375-0589 | 11 | 22-28-5118 | A-42375-0606 | 29 | 22-28-5298 | A-42375-0624 |
| 12 | 22-28-5125 | A-42375-0572 | 30 | 22-28-5305 | A-42375-0590 | 12 | 22-28-5128 | A-42375-0607 | 30 | 22-28-5308 | A-42375-0625 |
| 13 | 22-28-5135 | A-42375-0573 | 31 | 22-28-5315 | A-42375-0591 | 13 | 22-28-5138 | A-42375-0608 | 31 | 22-28-5318 | A-42375-0626 |
| 14 | 22-28-5145 | A-42375-0574 | 32 | 22-28-5325 | A-42375-0592 | 14 | 22-28-5148 | A-42375-0609 | 32 | 22-28-5328 | A-42375-0627 |
| 15 | 22-28-5155 | A-42375-0575 | 33 | 22-28-5335 | A-42375-0593 | 15 | 22-28-5158 | A-42375-0610 | 33 | 22-28-5338 | A-42375-0628 |
| 16 | 22-28-5165 | A-42375-0576 | 34 | 22-28-5345 | A-42375-0594 | 16 | 22-28-5168 | A-42375-0611 | 34 | 22-28-5348 | A-42375-0629 |
| 17 | 22-28-5175 | A-42375-0577 | 35 | 22-28-5355 | A-42375-0595 | 17 | 22-28-5178 | A-42375-0612 | 35 | 22-28-5358 | A-42375-0630 |
| 18 | 22-28-5185 | A-42375-0578 | 36 | 22-28-5365 | A-42375-0596 | 18 | 22-28-5188 | A-42375-0613 | 36 | 22-28-5368 | A-42375-0631 |
| 19 | 22-28-5195 | A-42375-0579 | | | | 19 | 22-28-5198 | A-42375-0614 | | | |
| REV: T15 | | | ECR/ECN INFORMATION: EC No.: UCP2009-1249 DATE: 12/2/2008 | | | TITLE: KK 100 HEADER ASSY FLAT VERTICAL BREAKAWAY | | | SHEET No. - 10 - | | |
| DOCUMENT NUMBER: SD- 42375-001 | | | CREATED / REVISED BY: MKIPPER | | | CHECKED BY: JBELL | | | APPROVED BY: FSMITH | | |
| TEMPLATE FILENAME: PRODUCT_SPEC(SIZE_A)(V.1).DOC | | | | | | | | | | | |

42375

ENG. NO: A-42375-0667/0699

| | | | | | |
|-------------------|--------------------|--------------|------|-----------------|--------------|
| HEADER NUMBER: | 42312-0036 | | | | |
| PIN NUMBER: | 42663-ABB208 | | | | |
| PIN LENGTH: L | .455 / 11.56 | | | | |
| MATING LENGTH: M | .240 / 6.09 | | | | |
| GOLD POINT: G | .100 / 2.54 | | | | |
| PC TAIL LENGTH: P | .125 / 3.18 | | | | |
| TIN: T | .100 / 2.54 | | | | |
| CKTS: | 4-36 | | | | |
| KINKS: | NO | | | | |
| VOIDED CKTS: | 4 | | | | |
| PACKAGING: | BULK PK-40873-0041 | | | | |
| CKTS | MATERIAL NUMBER | ENG NUMBER | CKTS | MATERIAL NUMBER | ENG NUMBER |
| 02 | | | 20 | 42375-0683 | A-42375-0683 |
| 03 | | | 21 | 42375-0684 | A-42375-0684 |
| 04 | 42375-0667 | A-42375-0667 | 22 | 42375-0685 | A-42375-0685 |
| 05 | 42375-0668 | A-42375-0668 | 23 | 42375-0686 | A-42375-0686 |
| 06 | 22-30-3060 | A-42375-0669 | 24 | 42375-0687 | A-42375-0687 |
| 07 | 42375-0670 | A-42375-0670 | 25 | 42375-0688 | A-42375-0688 |
| 08 | 42375-0671 | A-42375-0671 | 26 | 42375-0689 | A-42375-0689 |
| 09 | 42375-0672 | A-42375-0672 | 27 | 42375-0690 | A-42375-0690 |
| 10 | 42375-0673 | A-42375-0673 | 28 | 42375-0691 | A-42375-0691 |
| 11 | 42375-0674 | A-42375-0674 | 29 | 42375-0692 | A-42375-0692 |
| 12 | 22-30-3120 | A-42375-0675 | 30 | 42375-0693 | A-42375-0693 |
| 13 | 42375-0676 | A-42375-0676 | 31 | 42375-0694 | A-42375-0694 |
| 14 | 42375-0677 | A-42375-0677 | 32 | 42375-0695 | A-42375-0695 |
| 15 | 42375-0678 | A-42375-0678 | 33 | 42375-0696 | A-42375-0696 |
| 16 | 42375-0679 | A-42375-0679 | 34 | 42375-0697 | A-42375-0697 |
| 17 | 42375-0680 | A-42375-0680 | 35 | 42375-0698 | A-42375-0698 |
| 18 | 42375-0681 | A-42375-0681 | 36 | 42375-0699 | A-42375-0699 |
| 19 | 42375-0682 | A-42375-0682 | | | |

ENG. NO: A-42375-0700/0732

| | | | | | |
|-------------------|--------------------|--------------|------|-----------------|--------------|
| HEADER NUMBER: | 42312-0036 | | | | |
| PIN NUMBER: | 42663-ADB208 | | | | |
| PIN LENGTH: L | .465 / 11.81 | | | | |
| MATING LENGTH: M | .240 / 6.09 | | | | |
| GOLD POINT: G | .100 / 2.54 | | | | |
| PC TAIL LENGTH: P | .135 / 3.43 | | | | |
| TIN: T | .100 / 2.54 | | | | |
| CKTS: | 4-36 | | | | |
| KINKS: | SMES-42003 | | | | |
| VOIDED CKTS: | 4 | | | | |
| PACKAGING: | BULK PK-40873-0041 | | | | |
| CKTS | MATERIAL NUMBER | ENG NUMBER | CKTS | MATERIAL NUMBER | ENG NUMBER |
| 02 | | | 20 | 42375-0716 | A-42375-0716 |
| 03 | | | 21 | 42375-0717 | A-42375-0717 |
| 04 | 42375-0700 | A-42375-0700 | 22 | 42375-0718 | A-42375-0718 |
| 05 | 42375-0701 | A-42375-0701 | 23 | 42375-0719 | A-42375-0719 |
| 06 | 22-30-3061 | A-42375-0702 | 24 | 42375-0720 | A-42375-0720 |
| 07 | 42375-0703 | A-42375-0703 | 25 | 42375-0721 | A-42375-0721 |
| 08 | 42375-0704 | A-42375-0704 | 26 | 42375-0722 | A-42375-0722 |
| 09 | 42375-0705 | A-42375-0705 | 27 | 42375-0723 | A-42375-0723 |
| 10 | 42375-0706 | A-42375-0706 | 28 | 42375-0724 | A-42375-0724 |
| 11 | 42375-0707 | A-42375-0707 | 29 | 42375-0725 | A-42375-0725 |
| 12 | 42375-0708 | A-42375-0708 | 30 | 42375-0726 | A-42375-0726 |
| 13 | 42375-0709 | A-42375-0709 | 31 | 42375-0727 | A-42375-0727 |
| 14 | 42375-0710 | A-42375-0710 | 32 | 42375-0728 | A-42375-0728 |
| 15 | 42375-0711 | A-42375-0711 | 33 | 42375-0729 | A-42375-0729 |
| 16 | 42375-0712 | A-42375-0712 | 34 | 42375-0730 | A-42375-0730 |
| 17 | 42375-0713 | A-42375-0713 | 35 | 42375-0731 | A-42375-0731 |
| 18 | 42375-0714 | A-42375-0714 | 36 | 42375-0732 | A-42375-0732 |
| 19 | 42375-0715 | A-42375-0715 | | | |

| | | | |
|---|---|--|--------------------------------------|
| REV: T15 | <u>ECR/ECN INFORMATION:</u> | <u>TITLE:</u> KK 100 HEADER ASSY FLAT VERTICAL BREAKAWAY | <u>SHEET No.</u> - 11 - |
| | EC No.: UCP2009-1249 DATE: 12/2/2008 | | |
| <u>DOCUMENT NUMBER:</u> SD- 42375-001 | <u>CREATED / REVISED BY:</u> MKIPPER | <u>CHECKED BY:</u> JBELL | <u>APPROVED BY:</u> FSMITH |

TEMPLATE FILENAME: PRODUCT_SPEC(SIZE_A)(V.1).DOC

ENG. NO: A-42375-0836/0870

| HEADER NUMBER: | 42312-0036 | | | | |
|-------------------|--------------------|--------------|------|-----------------|--------------|
| PIN NUMBER: | 42663-BSA154 | | | | |
| PIN LENGTH: L | .630 / 16.00 | | | | |
| MATING LENGTH: M | .405/10.29 | | | | |
| GOLD POINT: G | N/A | | | | |
| PC TAIL LENGTH: P | .135/3.43 | | | | |
| TIN: T | OVERALL | | | | |
| CKTS: | 2-36 | | | | |
| KINKS: | YES | | | | |
| VOIDED CKTS: | NONE | | | | |
| PACKAGING: | BULK PK-40873-0041 | | | | |
| CKTS | MATERIAL NUMBER | ENG NUMBER | CKTS | MATERIAL NUMBER | ENG NUMBER |
| 02 | | A-42375-0836 | 20 | 22-30-3203 | A-42375-0854 |
| 03 | 22-30-3033 | A-42375-0837 | 21 | 22-30-3213 | A-42375-0855 |
| 04 | 22-30-3043 | A-42375-0838 | 22 | 22-30-3223 | A-42375-0856 |
| 05 | 22-30-3053 | A-42375-0839 | 23 | 22-30-3233 | A-42375-0857 |
| 06 | 22-30-3063 | A-42375-0840 | 24 | 22-30-3243 | A-42375-0858 |
| 07 | 22-30-3073 | A-42375-0841 | 25 | 22-30-3253 | A-42375-0859 |
| 08 | 22-30-3083 | A-42375-0842 | 26 | 22-30-3263 | A-42375-0860 |
| 09 | 22-30-3093 | A-42375-0843 | 27 | 22-30-3273 | A-42375-0861 |
| 10 | 22-30-3103 | A-42375-0844 | 28 | 22-30-3283 | A-42375-0862 |
| 11 | 22-30-3113 | A-42375-0845 | 29 | 22-30-3293 | A-42375-0863 |
| 12 | 22-30-3123 | A-42375-0846 | 30 | 22-30-3303 | A-42375-0864 |
| 13 | 22-30-3133 | A-42375-0847 | 31 | 22-30-3313 | A-42375-0865 |
| 14 | 22-30-3143 | A-42375-0848 | 32 | 22-30-3323 | A-42375-0866 |
| 15 | 22-30-3153 | A-42375-0849 | 33 | 22-30-3333 | A-42375-0867 |
| 16 | 22-30-3163 | A-42375-0850 | 34 | 22-30-3343 | A-42375-0868 |
| 17 | 22-30-3173 | A-42375-0851 | 35 | 22-30-3353 | A-42375-0869 |
| 18 | 22-30-3183 | A-42375-0852 | 36 | 22-30-3363 | A-42375-0870 |
| 19 | 22-30-3193 | A-42375-0853 | | | |

| | | | |
|---|--|--|--------------------------------------|
| REV: T15 | <u>ECR/ECN INFORMATION:</u> EC No.: UCP2009-1249 DATE: 12/2/2008 | <u>TITLE:</u> KK 100 HEADER ASSY FLAT VERTICAL BREAKAWAY | <u>SHEET No.</u> - 12 - |
| <u>DOCUMENT NUMBER:</u> SD- 42375-001 | <u>CREATED / REVISED BY:</u> MKIPPER | <u>CHECKED BY:</u> JBELL | <u>APPROVED BY:</u> FSMITH |

TEMPLATE FILENAME: PRODUCT_SPEC(SIZE_A)(V.1).DOC

42375

| ENG. NO: A-42375-0871/0904 | | | | | |
|----------------------------|-----------------|--------------------|------|-----------------|--------------|
| HEADER NUMBER: | | 42312-0036 | | | |
| PIN NUMBER: | | 42663-ATA154 | | | |
| PIN LENGTH: L | | .530 / 13.46 | | | |
| MATING LENGTH: M | | .320 / 8.13 | | | |
| GOLD POINT: G | | N/A | | | |
| PC TAIL LENGTH: P | | .120 / 3.05 | | | |
| TIN: T | | OVERALL | | | |
| CKTS: | | 3-36 | | | |
| KINKS: | | NO | | | |
| VOIDED CKTS: | | 2 | | | |
| PACKAGING: | | BULK PK-40873-0041 | | | |
| CKTS | MATERIAL NUMBER | ENG NUMBER | CKTS | MATERIAL NUMBER | ENG NUMBER |
| 02 | | | 20 | 22-30-3204 | A-42375-0888 |
| 03 | 22-30-3034 | A-42375-0871 | 21 | 22-30-3214 | A-42375-0889 |
| 04 | 22-30-3044 | A-42375-0872 | 22 | 22-30-3224 | A-42375-0890 |
| 05 | 22-30-3054 | A-42375-0873 | 23 | 22-30-3234 | A-42375-0891 |
| 06 | 22-30-3064 | A-42375-0874 | 24 | 22-30-3244 | A-42375-0892 |
| 07 | 22-30-3074 | A-42375-0875 | 25 | 22-30-3254 | A-42375-0893 |
| 08 | 22-30-3084 | A-42375-0876 | 26 | 22-30-3264 | A-42375-0894 |
| 09 | 22-30-3094 | A-42375-0877 | 27 | 22-30-3274 | A-42375-0895 |
| 10 | 22-30-3104 | A-42375-0878 | 28 | 22-30-3284 | A-42375-0896 |
| 11 | 22-30-3114 | A-42375-0879 | 29 | 22-30-3294 | A-42375-0897 |
| 12 | 22-30-3124 | A-42375-0880 | 30 | 22-30-3304 | A-42375-0898 |
| 13 | 22-30-3134 | A-42375-0881 | 31 | 22-30-3314 | A-42375-0899 |
| 14 | 22-30-3144 | A-42375-0882 | 32 | 22-30-3324 | A-42375-0900 |
| 15 | 22-30-3154 | A-42375-0883 | 33 | 22-30-3334 | A-42375-0901 |
| 16 | 22-30-3164 | A-42375-0884 | 34 | 22-30-3344 | A-42375-0902 |
| 17 | 22-30-3174 | A-42375-0885 | 35 | 22-30-3354 | A-42375-0903 |
| 18 | 22-30-3184 | A-42375-0886 | 36 | 22-30-3364 | A-42375-0904 |
| 19 | 22-30-3194 | A-42375-0887 | | | |

| ENG. NO: A-42375-0973/1001 | | | | | |
|----------------------------|-----------------|--------------------|------|-----------------|--------------|
| HEADER NUMBER: | | 42312-0036 | | | |
| PIN NUMBER: | | 42663-ABA154 | | | |
| PIN LENGTH: L | | .455 / 11.56 | | | |
| MATING LENGTH: M | | .240 / 6.09 | | | |
| GOLD POINT: G | | N/A | | | |
| PC TAIL LENGTH: P | | .125 / 3.18 | | | |
| TIN: T | | OVERALL | | | |
| CKTS: | | 8-36 | | | |
| KINKS: | | NO | | | |
| VOIDED CKTS: | | 3,8 | | | |
| PACKAGING: | | BULK PK-40873-0041 | | | |
| CKTS | MATERIAL NUMBER | ENG NUMBER | CKTS | MATERIAL NUMBER | ENG NUMBER |
| 02 | | | 20 | 42375-0985 | A-42375-0985 |
| 03 | | | 21 | 42375-0986 | A-42375-0986 |
| 04 | | | 22 | 42375-0987 | A-42375-0987 |
| 05 | | | 23 | 42375-0988 | A-42375-0988 |
| 06 | | | 24 | 42375-0989 | A-42375-0989 |
| 07 | | | 25 | 42375-0990 | A-42375-0990 |
| 08 | 42375-0973 | A-42375-0973 | 26 | 42375-0991 | A-42375-0991 |
| 09 | 42375-0974 | A-42375-0974 | 27 | 42375-0992 | A-42375-0992 |
| 10 | 22-30-3107 | A-42375-0975 | 28 | 42375-0993 | A-42375-0993 |
| 11 | 42375-0976 | A-42375-0976 | 29 | 42375-0994 | A-42375-0994 |
| 12 | 42375-0977 | A-42375-0977 | 30 | 42375-0995 | A-42375-0995 |
| 13 | 42375-0978 | A-42375-0978 | 31 | 42375-0996 | A-42375-0996 |
| 14 | 42375-0979 | A-42375-0979 | 32 | 42375-0997 | A-42375-0997 |
| 15 | 42375-0980 | A-42375-0980 | 33 | 42375-0998 | A-42375-0998 |
| 16 | 42375-0981 | A-42375-0981 | 34 | 42375-0999 | A-42375-0999 |
| 17 | 42375-0982 | A-42375-0982 | 35 | 42375-1000 | A-42375-1000 |
| 18 | 42375-0983 | A-42375-0983 | 36 | 42375-1001 | A-42375-1001 |
| 19 | 42375-0984 | A-42375-0984 | | | |

| | | | | | | |
|---|-----------------------------|--|---------------|------------------------------------|---|-----------------------------------|
| REV: T15 | <u>ECR/ECN INFORMATION:</u> | | <u>TITLE:</u> | | KK 100 HEADER ASSY FLAT VERTICAL BREAKAWAY | <u>SHEET No.</u> - 13 - |
| | EC No.: | UCP2009-1249 | | | | |
| | DATE: | 12/2/2008 | | | | |
| <u>DOCUMENT NUMBER:</u> SD- 42375-001 | | <u>CREATED / REVISED BY:</u> MKIPPER | | <u>CHECKED BY:</u> JBELL | <u>APPROVED BY:</u> FSMITH | |

TEMPLATE FILENAME: PRODUCT_SPEC(SIZE_A)(V.1).DOC

| ENG. NO: A-42375-1105/1139 | | | | | | ENG. NO: 42375-1244/1278 | | | | |
|---|-----------------|--|------|--|--|------------------------------------|-------------|--------------------------------------|-----------------------------------|--|
| HEADER NUMBER: | | 42312-0036 | | | | HEADER NUMBER: | | 42312-0036 | | |
| PIN NUMBER: | | 42663-ABB208 | | | | PIN NUMBER: | | 42663-ABA154 | | |
| PIN LENGTH: L | | .455 / 11.56 | | | | PIN LENGTH: L | | .455 / 11.56 | | |
| MATING LENGTH: M | | .240 / 6.09 | | | | MATING LENGTH: M | | .240 / 6.09 | | |
| GOLD POINT: G | | .100 / 2.54 | | | | GOLD POINT: G | | N/A | | |
| PC TAIL LENGTH: P | | .125 / 3.18 | | | | PC TAIL LENGTH: P | | .125 / 3.18 | | |
| TIN: T | | .100 / 2.54 | | | | TIN: T | | OVERALL | | |
| CKTS: | | 2-36 | | | | CKTS: | | 2-36 | | |
| KINKS: | | NO | | | | KINKS: | | NO | | |
| VOIDED CKTS: | | 2 | | | | VOIDED CKTS: | | 2 | | |
| PACKAGING: | | BULK PK-40873-0041 | | | | PACKAGING: | | BULK PK-40873-0041 | | |
| CKTS | MATERIAL NUMBER | ENG NUMBER | CKTS | MATERIAL NUMBER | ENG NUMBER | CKTS | ITEM NUMBER | CKTS | ITEM NUMBER | |
| 02 | 42375-1105 | A-42375-1105 | 20 | 42375-1123 | A-42375-1123 | 02 | 42375-1244 | 20 | 42375-1262 | |
| 03 | 42375-1106 | A-42375-1106 | 21 | 42375-1124 | A-42375-1124 | 03 | 42375-1245 | 21 | 42375-1263 | |
| 04 | 42375-1107 | A-42375-1107 | 22 | 42375-1125 | A-42375-1125 | 04 | 42375-1246 | 22 | 42375-1264 | |
| 05 | 42375-1108 | A-42375-1108 | 23 | 42375-1126 | A-42375-1126 | 05 | 42375-1247 | 23 | 42375-1265 | |
| 06 | 42375-1109 | A-42375-1109 | 24 | 42375-1127 | A-42375-1127 | 06 | 42375-1248 | 24 | 42375-1266 | |
| 07 | 42375-1110 | A-42375-1110 | 25 | 42375-1128 | A-42375-1128 | 07 | 42375-1249 | 25 | 42375-1267 | |
| 08 | 42375-1111 | A-42375-1111 | 26 | 42375-1129 | A-42375-1129 | 08 | 42375-1250 | 26 | 42375-1268 | |
| 09 | 22-30-3099 | A-42375-1112 | 27 | 42375-1130 | A-42375-1130 | 09 | 42375-1251 | 27 | 42375-1269 | |
| 10 | 42375-1113 | A-42375-1113 | 28 | 42375-1131 | A-42375-1131 | 10 | 42375-1252 | 28 | 42375-1270 | |
| 11 | 42375-1114 | A-42375-1114 | 29 | 42375-1132 | A-42375-1132 | 11 | 42375-1253 | 29 | 42375-1271 | |
| 12 | 42375-1115 | A-42375-1115 | 30 | 42375-1133 | A-42375-1133 | 12 | 42375-1254 | 30 | 42375-1272 | |
| 13 | 42375-1116 | A-42375-1116 | 31 | 42375-1134 | A-42375-1134 | 13 | 42375-1255 | 31 | 42375-1273 | |
| 14 | 42375-1117 | A-42375-1117 | 32 | 42375-1135 | A-42375-1135 | 14 | 42375-1256 | 32 | 42375-1274 | |
| 15 | 42375-1118 | A-42375-1118 | 33 | 42375-1136 | A-42375-1136 | 15 | 42375-1257 | 33 | 42375-1275 | |
| 16 | 42375-1119 | A-42375-1119 | 34 | 42375-1137 | A-42375-1137 | 16 | 42375-1258 | 34 | 42375-1276 | |
| 17 | 42375-1120 | A-42375-1120 | 35 | 42375-1138 | A-42375-1138 | 17 | 42375-1259 | 35 | 42375-1277 | |
| 18 | 42375-1121 | A-42375-1121 | 36 | 42375-1139 | A-42375-1139 | 18 | 42375-1260 | 36 | 42375-1278 | |
| 19 | 42375-1122 | A-42375-1122 | | | | 19 | 42375-1261 | | | |
| REV: T15 | | <u>ECR/ECN INFORMATION:</u> EC No.: UCP2009-1249 DATE: 12/2/2008 | | | <u>TITLE:</u> KK 100 HEADER ASSY FLAT VERTICAL BREAKAWAY | | | | <u>SHEET No.</u> - 14 - | |
| <u>DOCUMENT NUMBER:</u> SD- 42375-001 | | | | <u>CREATED / REVISED BY:</u> MKIPPER | | <u>CHECKED BY:</u> JBELL | | <u>APPROVED BY:</u> FSMITH | | |

| ENG. NO: 42375-1349/1382 | | | | ENG. NO: 42375-1515/1548 | | | | | |
|---|-------------|---|-------------|--|-------------|-----------------------------|-------------|-------------------------------|--|
| HEADER NUMBER: | | 42312-0036 | | HEADER NUMBER: | | 42312-0036 | | | |
| PIN NUMBER: | | 42663-ABA154 | | PIN NUMBER: | | 42663-ABB208 | | | |
| PIN LENGTH: L | | .455 / 11.56 | | PIN LENGTH: L | | .455 / 11.56 | | | |
| MATING LENGTH: M | | .230 / 5.84 | | MATING LENGTH: M | | .230 / 5.84 | | | |
| GOLD POINT: G | | N/A | | GOLD POINT: G | | .140 / 3.56 | | | |
| PC TAIL LENGTH: P | | .135 / 3.43 | | PC TAIL LENGTH: P | | .135 / 3.43 | | | |
| TIN: T | | OVERALL | | TIN: T | | .100 / 2.54 | | | |
| CKTS: | | 3-36 | | CKTS: | | 3-36 | | | |
| KINKS: | | SMES-42003 | | KINKS: | | SMES-42003 | | | |
| VOIDED CKTS: | | 2 | | VOIDED CKTS: | | 2 | | | |
| PACKAGING: | | BULK PK-40873-0041 | | PACKAGING: | | BULK PK-40873-0041 | | | |
| CKTS | ITEM NUMBER | CKTS | ITEM NUMBER | CKTS | ITEM NUMBER | CKTS | ITEM NUMBER | | |
| 02 | | 20 | 42375-1366 | 02 | | 20 | 42375-1532 | | |
| 03 | 42375-1349 | 21 | 42375-1367 | 03 | 42375-1515 | 21 | 42375-1533 | | |
| 04 | 42375-1350 | 22 | 42375-1368 | 04 | 42375-1516 | 22 | 42375-1534 | | |
| 05 | 42375-1351 | 23 | 42375-1369 | 05 | 42375-1517 | 23 | 42375-1535 | | |
| 06 | 42375-1352 | 24 | 42375-1370 | 06 | 42375-1518 | 24 | 42375-1536 | | |
| 07 | 42375-1353 | 25 | 42375-1371 | 07 | 42375-1519 | 25 | 42375-1537 | | |
| 08 | 42375-1354 | 26 | 42375-1372 | 08 | 42375-1520 | 26 | 42375-1538 | | |
| 09 | 42375-1355 | 27 | 42375-1373 | 09 | 42375-1521 | 27 | 42375-1539 | | |
| 10 | 42375-1356 | 28 | 42375-1374 | 10 | 42375-1522 | 28 | 42375-1540 | | |
| 11 | 42375-1357 | 29 | 42375-1375 | 11 | 42375-1523 | 29 | 42375-1541 | | |
| 12 | 42375-1358 | 30 | 42375-1376 | 12 | 42375-1524 | 30 | 42375-1542 | | |
| 13 | 42375-1359 | 31 | 42375-1377 | 13 | 42375-1525 | 31 | 42375-1543 | | |
| 14 | 42375-1360 | 32 | 42375-1378 | 14 | 42375-1526 | 32 | 42375-1544 | | |
| 15 | 42375-1361 | 33 | 42375-1379 | 15 | 42375-1527 | 33 | 42375-1545 | | |
| 16 | 42375-1362 | 34 | 42375-1380 | 16 | 42375-1528 | 34 | 42375-1546 | | |
| 17 | 42375-1363 | 35 | 42375-1381 | 17 | 42375-1529 | 35 | 42375-1547 | | |
| 18 | 42375-1364 | 36 | 42375-1382 | 18 | 42375-1530 | 36 | 42375-1548 | | |
| 19 | 42375-1365 | | | 19 | 42375-1531 | | | | |
| REV: T15 | | ECR/ECN INFORMATION: EC No.: UCP2009-1249 DATE: 12/2/2008 | | TITLE: KK 100 HEADER ASSY FLAT VERTICAL BREAKAWAY | | | | SHEET No. - 15 - | |
| DOCUMENT NUMBER: SD- 42375-001 | | | | CREATED / REVISED BY: MKIPPER | | CHECKED BY: JBELL | | APPROVED BY: FSMITH | |
| <small>TEMPLATE FILENAME: PRODUCT_SPEC(SIZE_A)(V.1).DOC</small> | | | | | | | | | |

| ENG. NO: 42375-1720/1753 | | | | ENG. NO: 42375-1855/1889 | | | | | |
|--|-------------|---|-------------|---|-------------|-----------------------------|-------------|-------------------------------|--|
| HEADER NUMBER: | | 42312-0036 | | HEADER NUMBER: | | 42312-0036 | | | |
| PIN NUMBER: | | 42663-ABB208 | | PIN NUMBER: | | 42663-CJA154 | | | |
| PIN LENGTH: L | | .455 / 11.56 | | PIN LENGTH: L | | .700 / 17.78 | | | |
| MATING LENGTH: M | | .240 / 6.09 | | MATING LENGTH: M | | .488 / 12.40 | | | |
| GOLD POINT: G | | .140 / 3.56 | | GOLD POINT: G | | N/A | | | |
| PC TAIL LENGTH: P | | .125 / 3.18 | | PC TAIL LENGTH: P | | .122 / 3.10 | | | |
| TIN: T | | .100 / 2.54 | | TIN: T | | OVERALL | | | |
| CKTS: | | 3-36 | | CKTS: | | 2-36 | | | |
| KINKS: | | NO | | KINKS: | | NO | | | |
| VOIDED CKTS: | | 3 | | VOIDED CKTS: | | NONE | | | |
| PACKAGING: | | BULK PK-40873-0041 | | PACKAGING: | | BULK PK-40873-0041 | | | |
| CKTS | ITEM NUMBER | CKTS | ITEM NUMBER | CKTS | ITEM NUMBER | CKTS | ITEM NUMBER | | |
| 02 | | 20 | 42375-1737 | 02 | 42375-1855 | 20 | 42375-1873 | | |
| 03 | 42375-1720 | 21 | 42375-1738 | 03 | 42375-1856 | 21 | 42375-1874 | | |
| 04 | 42375-1721 | 22 | 42375-1739 | 04 | 42375-1857 | 22 | 42375-1875 | | |
| 05 | 42375-1722 | 23 | 42375-1740 | 05 | 42375-1858 | 23 | 42375-1876 | | |
| 06 | 42375-1723 | 24 | 42375-1741 | 06 | 42375-1859 | 24 | 42375-1877 | | |
| 07 | 42375-1724 | 25 | 42375-1742 | 07 | 42375-1860 | 25 | 42375-1878 | | |
| 08 | 42375-1725 | 26 | 42375-1743 | 08 | 42375-1861 | 26 | 42375-1879 | | |
| 09 | 42375-1726 | 27 | 42375-1744 | 09 | 42375-1862 | 27 | 42375-1880 | | |
| 10 | 42375-1727 | 28 | 42375-1745 | 10 | 42375-1863 | 28 | 42375-1881 | | |
| 11 | 42375-1728 | 29 | 42375-1746 | 11 | 42375-1864 | 29 | 42375-1882 | | |
| 12 | 42375-1729 | 30 | 42375-1747 | 12 | 42375-1865 | 30 | 42375-1883 | | |
| 13 | 42375-1730 | 31 | 42375-1748 | 13 | 42375-1866 | 31 | 42375-1884 | | |
| 14 | 42375-1731 | 32 | 42375-1749 | 14 | 42375-1867 | 32 | 42375-1885 | | |
| 15 | 42375-1732 | 33 | 42375-1750 | 15 | 42375-1868 | 33 | 42375-1886 | | |
| 16 | 42375-1733 | 34 | 42375-1751 | 16 | 42375-1869 | 34 | 42375-1887 | | |
| 17 | 42375-1734 | 35 | 42375-1752 | 17 | 42375-1870 | 35 | 42375-1888 | | |
| 18 | 42375-1735 | 36 | 42375-1753 | 18 | 42375-1871 | 36 | 42375-1889 | | |
| 19 | 42375-1736 | | | 19 | 42375-1872 | | | | |
| REV: T15 | | ECR/ECN INFORMATION: EC No.: UCP2009-1249 DATE: 12/2/2008 | | TITLE: KK 100 HEADER ASSY FLAT VERTICAL BREAKAWAY | | | | SHEET No. - 16 - | |
| DOCUMENT NUMBER: SD- 42375-001 | | | | CREATED / REVISED BY: MKIPPER | | CHECKED BY: JBELL | | APPROVED BY: FSMITH | |

| ENG. NO: 42375-1922/1956 | | | | ENG. NO: 42375-2246/2275 | | | | | |
|---|-------------|--|-------------|--|-------------|------------------------------------|-------------|--------------------------------------|--|
| HEADER NUMBER: | | 42312-0036 | | HEADER NUMBER: | | 42312-0036 | | | |
| PIN NUMBER: | | 42663-AEA154 | | PIN NUMBER: | | 42663-ABA154 | | | |
| PIN LENGTH: L | | .470 / 11.94 | | PIN LENGTH: L | | .455 / 11.56 | | | |
| MATING LENGTH: M | | .190 / 4.83 | | MATING LENGTH: M | | .240 / 6.09 | | | |
| GOLD POINT: G | | N/A | | GOLD POINT: G | | N/A | | | |
| PC TAIL LENGTH: P | | .190 / 4.83 | | PC TAIL LENGTH: P | | .125 / 3.18 | | | |
| TIN: T | | .200 / 5.08 | | TIN: T | | OVERALL | | | |
| CKTS: | | 2-36 | | CKTS: | | 7-36 | | | |
| KINKS: | | NO | | KINKS: | | NO | | | |
| VOIDED CKTS: | | NONE | | VOIDED CKTS: | | 2,7 | | | |
| PACKAGING: | | BULK PK-40873-0041 | | PACKAGING: | | BULK PK-40873-0041 | | | |
| CKTS | ITEM NUMBER | CKTS | ITEM NUMBER | CKTS | ITEM NUMBER | CKTS | ITEM NUMBER | | |
| 02 | 42375-1922 | 20 | 42375-1940 | 02 | | 20 | 42375-2259 | | |
| 03 | 42375-1923 | 21 | 42375-1941 | 03 | | 21 | 42375-2260 | | |
| 04 | 42375-1924 | 22 | 42375-1942 | 04 | | 22 | 42375-2261 | | |
| 05 | 42375-1925 | 23 | 42375-1943 | 05 | | 23 | 42375-2262 | | |
| 06 | 42375-1926 | 24 | 42375-1944 | 06 | | 24 | 42375-2263 | | |
| 07 | 42375-1927 | 25 | 42375-1945 | 07 | 42375-2246 | 25 | 42375-2264 | | |
| 08 | 42375-1928 | 26 | 42375-1946 | 08 | 42375-2247 | 26 | 42375-2265 | | |
| 09 | 42375-1929 | 27 | 42375-1947 | 09 | 42375-2248 | 27 | 42375-2266 | | |
| 10 | 42375-1930 | 28 | 42375-1948 | 10 | 42375-2249 | 28 | 42375-2267 | | |
| 11 | 42375-1931 | 29 | 42375-1949 | 11 | 42375-2250 | 29 | 42375-2268 | | |
| 12 | 42375-1932 | 30 | 42375-1950 | 12 | 42375-2251 | 30 | 42375-2269 | | |
| 13 | 42375-1933 | 31 | 42375-1951 | 13 | 42375-2252 | 31 | 42375-2270 | | |
| 14 | 42375-1934 | 32 | 42375-1952 | 14 | 42375-2253 | 32 | 42375-2271 | | |
| 15 | 42375-1935 | 33 | 42375-1953 | 15 | 42375-2254 | 33 | 42375-2272 | | |
| 16 | 42375-1936 | 34 | 42375-1954 | 16 | 42375-2255 | 34 | 42375-2273 | | |
| 17 | 42375-1937 | 35 | 42375-1955 | 17 | 42375-2256 | 35 | 42375-2274 | | |
| 18 | 42375-1938 | 36 | 42375-1956 | 18 | 42375-2257 | 36 | 42375-2275 | | |
| 19 | 42375-1939 | | | 19 | 42375-2258 | | | | |
| REV: T15 | | <u>ECR/ECN INFORMATION:</u> EC No.: UCP2009-1249 DATE: 12/2/2008 | | <u>TITLE:</u> KK 100 HEADER ASSY FLAT VERTICAL BREAKAWAY | | | | <u>SHEET No.</u> - 17 - | |
| <u>DOCUMENT NUMBER:</u> SD- 42375-001 | | | | <u>CREATED / REVISED BY:</u> MKIPPER | | <u>CHECKED BY:</u> JBELL | | <u>APPROVED BY:</u> FSMITH | |
| <small>TEMPLATE FILENAME: PRODUCT_SPEC(SIZE_A)(V.1).DOC</small> | | | | | | | | | |

| ENG. NO: 42375-2486/2520 | | | | ENG. NO: 42375-2521/2555 | | | | | |
|---|-------------|--|-------------|--|-------------|------------------------------------|-------------|--------------------------------------|--|
| HEADER NUMBER: | | 42312-0036 | | HEADER NUMBER: | | 42312-0036 | | | |
| PIN NUMBER: | | 42663-AFB208 | | PIN NUMBER: | | 42663-AFB228 | | | |
| PIN LENGTH: L | | .475 / 12.07 | | PIN LENGTH: L | | .475 / 12.07 | | | |
| MATING LENGTH: M | | .232 / 5.89 | | MATING LENGTH: M | | .232 / 5.89 | | | |
| GOLD POINT: G | | .150 / 3.81 | | GOLD POINT: G | | .150 / 3.81 | | | |
| PC TAIL LENGTH: P | | .153 / 3.89 | | PC TAIL LENGTH: P | | .153 / 3.89 | | | |
| TIN: T | | .100 / 2.54 | | TIN: T | | .100 / 2.54 | | | |
| CKTS: | | 2-36 | | CKTS: | | 2-36 | | | |
| KINKS: | | NO | | KINKS: | | NO | | | |
| VOIDED CKTS: | | NONE | | VOIDED CKTS: | | NONE | | | |
| PACKAGING: | | BULK PK-40873-0041 | | PACKAGING: | | BULK PK-40873-0041 | | | |
| CKTS | ITEM NUMBER | CKTS | ITEM NUMBER | CKTS | ITEM NUMBER | CKTS | ITEM NUMBER | | |
| 02 | 42375-2486 | 19 | 42375-2503 | 02 | 42375-2521 | 20 | 42375-2539 | | |
| 03 | 42375-2487 | 20 | 42375-2504 | 03 | 42375-2522 | 21 | 42375-2540 | | |
| | 68300-2008 | 21 | 42375-2505 | 04 | 42375-2523 | 22 | 42375-2541 | | |
| 04 | 42375-2488 | 22 | 42375-2506 | 05 | 42375-2524 | 23 | 42375-2542 | | |
| 05 | 42375-2489 | 23 | 42375-2507 | 06 | 42375-2525 | 24 | 42375-2543 | | |
| 06 | 42375-2490 | 24 | 42375-2508 | 07 | 42375-2526 | 25 | 42375-2544 | | |
| 07 | 42375-2491 | 25 | 42375-2509 | 08 | 42375-2527 | 26 | 42375-2545 | | |
| 08 | 42375-2492 | 26 | 42375-2510 | 09 | 42375-2528 | 27 | 42375-2546 | | |
| 09 | 42375-2493 | 27 | 42375-2511 | 10 | 42375-2529 | 28 | 42375-2547 | | |
| 10 | 42375-2494 | 28 | 42375-2512 | 11 | 42375-2530 | 29 | 42375-2548 | | |
| 11 | 42375-2495 | 29 | 42375-2513 | 12 | 42375-2531 | 30 | 42375-2549 | | |
| 12 | 42375-2496 | 30 | 42375-2514 | 13 | 42375-2532 | 31 | 42375-2550 | | |
| 13 | 42375-2497 | 31 | 42375-2515 | 14 | 42375-2533 | 32 | 42375-2551 | | |
| 14 | 42375-2498 | 32 | 42375-2516 | 15 | 42375-2534 | 33 | 42375-2552 | | |
| 15 | 42375-2499 | 33 | 42375-2517 | 16 | 42375-2535 | 34 | 42375-2553 | | |
| 16 | 42375-2500 | 34 | 42375-2518 | 17 | 42375-2536 | 35 | 42375-2554 | | |
| 17 | 42375-2501 | 35 | 42375-2519 | 18 | 42375-2537 | 36 | 42375-2555 | | |
| 18 | 42375-2502 | 36 | 42375-2520 | 19 | 42375-2538 | | | | |
| REV: T15 | | <u>ECR/ECN INFORMATION:</u> EC No.: UCP2009-1249 DATE: 12/2/2008 | | <u>TITLE:</u> KK 100 HEADER ASSY FLAT VERTICAL BREAKAWAY | | | | <u>SHEET No.</u> - 18 - | |
| <u>DOCUMENT NUMBER:</u> SD- 42375-001 | | | | <u>CREATED / REVISED BY:</u> MKIPPER | | <u>CHECKED BY:</u> JBELL | | <u>APPROVED BY:</u> FSMITH | |
| <small>TEMPLATE FILENAME: PRODUCT_SPEC(SIZE_A)(V.1).DOC</small> | | | | | | | | | |

| ENG. NO: 42375-2801/2835 | | | | ENG. NO: 42375-2836/2870 | | | |
|--------------------------|-------------|--------------------|-------------|--------------------------|-------------|--------------------|-------------|
| HEADER NUMBER: | | 42312-0036 | | HEADER NUMBER: | | 42312-0036 | |
| PIN NUMBER: | | 42663-HDB228 | | PIN NUMBER: | | 42663-EMA154 | |
| PIN LENGTH: L | | 1.200 / 30.48 | | PIN LENGTH: L | | .925 / 23.50 | |
| MATING LENGTH: M | | 1.000 / 25.40 | | MATING LENGTH: M | | .625 / 15.88 | |
| GOLD POINT: G | | .200 / 5.08 | | GOLD POINT: G | | N/A | |
| PC TAIL LENGTH: P | | .110 / 2.79 | | PC TAIL LENGTH: P | | .210 / 5.33 | |
| TIN: T | | .200 / 5.08 | | TIN: T | | OVERALL | |
| CKTS: | | 2-36 | | CKTS: | | 2-36 | |
| KINKS: | | NO | | KINKS: | | NO | |
| VOIDED CKTS: | | NONE | | VOIDED CKTS: | | NONE | |
| PACKAGING: | | BULK PK-40873-0043 | | PACKAGING: | | BULK PK-40873-0041 | |
| CKTS | ITEM NUMBER | CKTS | ITEM NUMBER | CKTS | ITEM NUMBER | CKTS | ITEM NUMBER |
| 02 | 42375-2801 | 20 | 42375-2819 | 02 | 42375-2836 | 20 | 42375-2854 |
| 03 | 42375-2802 | 21 | 42375-2820 | 03 | 42375-2837 | 21 | 42375-2855 |
| 04 | 42375-2803 | 22 | 42375-2821 | 04 | 42375-2838 | 22 | 42375-2856 |
| 05 | 42375-2804 | 23 | 42375-2822 | 05 | 42375-2839 | 23 | 42375-2857 |
| 06 | 42375-2805 | 24 | 42375-2823 | 06 | 42375-2840 | 24 | 42375-2858 |
| 07 | 42375-2806 | 25 | 42375-2824 | 07 | 42375-2841 | 25 | 42375-2859 |
| 08 | 42375-2807 | 26 | 42375-2825 | 08 | 42375-2842 | 26 | 42375-2860 |
| 09 | 42375-2808 | 27 | 42375-2826 | 09 | 42375-2843 | 27 | 42375-2861 |
| 10 | 42375-2809 | 28 | 42375-2827 | 10 | 42375-2844 | 28 | 42375-2862 |
| 11 | 42375-2810 | 29 | 42375-2828 | 11 | 42375-2845 | 29 | 42375-2863 |
| 12 | 42375-2811 | 30 | 42375-2829 | 12 | 42375-2846 | 30 | 42375-2864 |
| 13 | 42375-2812 | 31 | 42375-2830 | 13 | 42375-2847 | 31 | 42375-2865 |
| 14 | 42375-2813 | 32 | 42375-2831 | 14 | 42375-2848 | 32 | 42375-2866 |
| 15 | 42375-2814 | 33 | 42375-2832 | 15 | 42375-2849 | 33 | 42375-2867 |
| 16 | 42375-2815 | 34 | 42375-2833 | 16 | 42375-2850 | 34 | 42375-2868 |
| 17 | 42375-2816 | 35 | 42375-2834 | 17 | 42375-2851 | 35 | 42375-2869 |
| 18 | 42375-2817 | 36 | 42375-2835 | 18 | 42375-2852 | 36 | 42375-2870 |
| 19 | 42375-2818 | | | 19 | 42375-2853 | | |

| | | | |
|-------------------------|---|---|---------------------|
| REV: | <u>ECR/ECN INFORMATION:</u> | <u>TITLE:</u> | <u>SHEET No.</u> |
| T15 | EC No.: UCP2009-1249 DATE: 12/2/2008 | KK 100 HEADER ASSY FLAT VERTICAL BREAKAWAY | - 19 - |
| <u>DOCUMENT NUMBER:</u> | <u>CREATED / REVISED BY:</u> | <u>CHECKED BY:</u> | <u>APPROVED BY:</u> |
| SD- 42375-001 | MKIPPER | JBELL | FSMITH |

TEMPLATE FILENAME: PRODUCT_SPEC(SIZE_A)(V.1).DOC

| ENG. NO: 42375-3044/3078 | | | | ENG. NO: 42375-3114/3148 | | | | |
|---|-----------------------------|--------------------|---|--------------------------|--------------------|--------------------|---------------------|--|
| HEADER NUMBER: | | 42312-0036 | | HEADER NUMBER: | | 42312-0036 | | |
| PIN NUMBER: | | 42663-KHB208 | | PIN NUMBER: | | 42663-BXA154 | | |
| PIN LENGTH: L | | 1.430 / 36.32 | | PIN LENGTH: L | | .645 / 16.38 | | |
| MATING LENGTH: M | | .867 / 22.02 | | MATING LENGTH: M | | .426 / 10.82 | | |
| GOLD POINT: G | | .200 / 5.08 | | GOLD POINT: G | | N/A | | |
| PC TAIL LENGTH: P | | .473 / 12.01 | | PC TAIL LENGTH: P | | .124 / 3.15 | | |
| TIN: T | | .200 / 5.08 | | TIN: T | | OVERALL | | |
| CKTS: | | 2-36 | | CKTS: | | 2-36 | | |
| KINKS: | | NO | | KINKS: | | NO | | |
| VOIDED CKTS: | | NONE | | VOIDED CKTS: | | NONE | | |
| PACKAGING: | | BULK PK-40873-0043 | | PACKAGING: | | BULK PK-40873-0041 | | |
| CKTS | ITEM NUMBER | CKTS | ITEM NUMBER | CKTS | ITEM NUMBER | CKTS | ITEM NUMBER | |
| 02 | 42375-3044 | 20 | 42375-3062 | 02 | 42375-3114 | 20 | 42375-3132 | |
| 03 | 42375-3045 | 21 | 42375-3063 | 03 | 42375-3115 | 21 | 42375-3133 | |
| 04 | 42375-3046 | 22 | 42375-3064 | 04 | 42375-3116 | 22 | 42375-3134 | |
| 05 | 42375-3047 | 23 | 42375-3065 | 05 | 42375-3117 | 23 | 42375-3135 | |
| 06 | 42375-3048 | 24 | 42375-3066 | 06 | 42375-3118 | 24 | 42375-3136 | |
| 07 | 42375-3049 | 25 | 42375-3067 | 07 | 42375-3119 | 25 | 42375-3137 | |
| 08 | 42375-3050 | 26 | 42375-3068 | 08 | 42375-3120 | 26 | 42375-3138 | |
| 09 | 42375-3051 | 27 | 42375-3069 | 09 | 42375-3121 | 27 | 42375-3139 | |
| 10 | 42375-3052 | 28 | 42375-3070 | 10 | 42375-3122 | 28 | 42375-3140 | |
| 11 | 42375-3053 | 29 | 42375-3071 | 11 | 42375-3123 | 29 | 42375-3141 | |
| 12 | 42375-3054 | 30 | 42375-3072 | 12 | 42375-3124 | 30 | 42375-3142 | |
| 13 | 42375-3055 | 31 | 42375-3073 | 13 | 42375-3125 | 31 | 42375-3143 | |
| 14 | 42375-3056 | 32 | 42375-3074 | 14 | 42375-3126 | 32 | 42375-3144 | |
| 15 | 42375-3057 | 33 | 42375-3075 | 15 | 42375-3127 | 33 | 42375-3145 | |
| 16 | 42375-3058 | 34 | 42375-3076 | 16 | 42375-3128 | 34 | 42375-3146 | |
| 17 | 42375-3059 | 35 | 42375-3077 | 17 | 42375-3129 | 35 | 42375-3147 | |
| 18 | 42375-3060 | 36 | 42375-3078 | 18 | 42375-3130 | 36 | 42375-3148 | |
| 19 | 42375-3061 | | | 19 | 42375-3131 | | | |
| REV: | <u>ECR/ECN INFORMATION:</u> | | <u>TITLE:</u> | | | | <u>SHEET No.</u> | |
| T15 | EC No.: UCP2009-1249 | | KK 100 HEADER ASSY FLAT VERTICAL BREAKAWAY | | | | - 20 - | |
| | DATE: 12/2/2008 | | | | | | | |
| <u>DOCUMENT NUMBER:</u> | | | <u>CREATED / REVISED BY:</u> | | <u>CHECKED BY:</u> | | <u>APPROVED BY:</u> | |
| SD- 42375-001 | | | MKIPPER | | JBELL | | FSMITH | |
| <small>TEMPLATE FILENAME: PRODUCT_SPEC(SIZE_A)(V.1).DOC</small> | | | | | | | | |

42375

| ENG. NO: 42375-3149 / 3183 | | | | ENG. NO: 42375-3184 / 3218 | | | | ENG. NO: 42375-3219 / 3253 | | | |
|----------------------------|-------------|--------------------|-------------|----------------------------|-------------|--------------------|-------------|----------------------------|-------------|--------------------|-------------|
| HEADER NUMBER: | | 42312-0036 | | HEADER NUMBER: | | 42312-0036 | | HEADER NUMBER: | | 42312-0036 | |
| PIN NUMBER: | | 42663-BEB208 | | PIN NUMBER: | | 42663-GNB208 | | PIN NUMBER: | | 42663-BPA154 | |
| PIN LENGTH: L | | .575 / 14.61 | | PIN LENGTH: L | | 1.140 / 28.96 | | PIN LENGTH: L | | .620 / 15.75 | |
| MATING LENGTH: M | | .350 / 8.89 | | MATING LENGTH: M | | .913 / 23.20 | | MATING LENGTH: M | | .280 / 7.11 | |
| GOLD POINT: G | | .200 / 5.08 | | GOLD POINT: G | | .200 / 5.08 | | GOLD POINT: G | | NA | |
| PC TAIL LENGTH: P | | .135 / 3.43 | | PC TAIL LENGTH: P | | .137 / 3.48 | | PC TAIL LENGTH: P | | .250 / 6.35 | |
| TIN: T | | .200 / 5.08 | | TIN: T | | .200 / 5.08 | | TIN: T | | OVERALL | |
| CKTS: | | 2-36 | | CKTS: | | 2-36 | | CKTS: | | 2-36 | |
| KINKS: | | NO | | KINKS: | | NO | | KINKS: | | NO | |
| VOIDED CKTS: | | NONE | | VOIDED CKTS: | | NONE | | VOIDED CKTS: | | NONE | |
| PACKAGING: | | BULK PK-40873-0041 | | PACKAGING: | | BULK PK-40873-0043 | | PACKAGING: | | BULK PK-40873-0041 | |
| CKTS | ITEM NUMBER | CKTS | ITEM NUMBER | CKTS | ITEM NUMBER | CKTS | ITEM NUMBER | CKTS | ITEM NUMBER | CKTS | ITEM NUMBER |
| 02 | 42375-3149 | 20 | 42375-3167 | 02 | 42375-3184 | 20 | 42375-3202 | 02 | 42375-3219 | 20 | 42375-3237 |
| 03 | 42375-3150 | 21 | 42375-3168 | 03 | 42375-3185 | 21 | 42375-3203 | 03 | 42375-3220 | 21 | 42375-3238 |
| 04 | 42375-3151 | 22 | 42375-3169 | 04 | 42375-3186 | 22 | 42375-3204 | 04 | 42375-3221 | 22 | 42375-3239 |
| 05 | 42375-3152 | 23 | 42375-3170 | 05 | 42375-3187 | 23 | 42375-3205 | 05 | 42375-3222 | 23 | 42375-3240 |
| 06 | 42375-3153 | 24 | 42375-3171 | 06 | 42375-3188 | 24 | 42375-3206 | 06 | 42375-3223 | 24 | 42375-3241 |
| 07 | 42375-3154 | 25 | 42375-3172 | 07 | 42375-3189 | 25 | 42375-3207 | 07 | 42375-3224 | 25 | 42375-3242 |
| 08 | 42375-3155 | 26 | 42375-3173 | 08 | 42375-3190 | 26 | 42375-3208 | 08 | 42375-3225 | 26 | 42375-3243 |
| 09 | 42375-3156 | 27 | 42375-3174 | 09 | 42375-3191 | 27 | 42375-3209 | 09 | 42375-3226 | 27 | 42375-3244 |
| 10 | 42375-3157 | 28 | 42375-3175 | 10 | 42375-3192 | 28 | 42375-3210 | 10 | 42375-3227 | 28 | 42375-3245 |
| 11 | 42375-3158 | 29 | 42375-3176 | 11 | 42375-3193 | 29 | 42375-3211 | 11 | 42375-3228 | 29 | 42375-3246 |
| 12 | 42375-3159 | 30 | 42375-3177 | 12 | 42375-3194 | 30 | 42375-3212 | 12 | 42375-3229 | 30 | 42375-3247 |
| 13 | 42375-3160 | 31 | 42375-3178 | 13 | 42375-3195 | 31 | 42375-3213 | 13 | 42375-3230 | 31 | 42375-3248 |
| 14 | 42375-3161 | 32 | 42375-3179 | 14 | 42375-3196 | 32 | 42375-3214 | 14 | 42375-3231 | 32 | 42375-3249 |
| 15 | 42375-3162 | 33 | 42375-3180 | 15 | 42375-3197 | 33 | 42375-3215 | 15 | 42375-3232 | 33 | 42375-3250 |
| 16 | 42375-3163 | 34 | 42375-3181 | 16 | 42375-3198 | 34 | 42375-3216 | 16 | 42375-3233 | 34 | 42375-3251 |
| 17 | 42375-3164 | 35 | 42375-3182 | 17 | 42375-3199 | 35 | 42375-3217 | 17 | 42375-3234 | 35 | 42375-3252 |
| 18 | 42375-3165 | 36 | 42375-3183 | 18 | 42375-3200 | 36 | 42375-3218 | 18 | 42375-3235 | 36 | 42375-3253 |
| 19 | 42375-3166 | | | 19 | 42375-3201 | | | 19 | 42375-3236 | | |

| | | | |
|--|---|---|-------------------------------|
| REV: T15 | ECR/ECN INFORMATION: EC No.: UCP2009-1249 DATE: 12/2/2008 | TITLE: KK 100 HEADER ASSY FLAT VERTICAL BREAKAWAY | SHEET No. - 21 - |
| DOCUMENT NUMBER: SD- 42375-001 | CREATED / REVISED BY: MKIPPER | CHECKED BY: JBELL | APPROVED BY: FSMITH |

TEMPLATE FILENAME: PRODUCT_SPEC(SIZE_A)(V.1).DOC

| ENG. NO: 42375-3254 / 3288 | | | | ENG. NO: 42375-3289 / 3323 | | | | ENG. NO: 42375-3324 / 3358 | | | |
|---|-----------------------------|--------------------|-------------|---|-------------|--------------------|-------------|----------------------------|-------------|--------------------|-------------|
| HEADER NUMBER: | | 42312-0036 | | HEADER NUMBER: | | 42312-0036 | | HEADER NUMBER: | | 42312-0036 | |
| PIN NUMBER: | | 42663-DMA154 | | PIN NUMBER: | | 42663-FNA154 | | PIN NUMBER: | | 42663-CCA154 | |
| PIN LENGTH: L | | .820 / 20.83 | | PIN LENGTH: L | | 1.035 / 26.29 | | PIN LENGTH: L | | .670 / 17.02 | |
| MATING LENGTH: M | | .590 / 14.99 | | MATING LENGTH: M | | .358 / 9.09 | | MATING LENGTH: M | | .440 / 11.18 | |
| GOLD POINT: G | | NA | | GOLD POINT: G | | NA | | GOLD POINT: G | | NA | |
| PC TAIL LENGTH: P | | .140 / 3.56 | | PC TAIL LENGTH: P | | .587 / 14.91 | | PC TAIL LENGTH: P | | .140 / 3.56 | |
| TIN: T | | OVERALL | | TIN: T | | OVERALL | | TIN: T | | OVERALL | |
| CKTS: | | 2-36 | | CKTS: | | 2-36 | | CKTS: | | 2-36 | |
| KINKS: | | NO | | KINKS: | | NO | | KINKS: | | SMES-42003 | |
| VOIDED CKTS: | | NONE | | VOIDED CKTS: | | NONE | | VOIDED CKTS: | | NONE | |
| PACKAGING: | | BULK PK-40873-0041 | | PACKAGING: | | BULK PK-40873-0043 | | PACKAGING: | | BULK PK-40873-0041 | |
| CKTS | ITEM NUMBER | CKTS | ITEM NUMBER | CKTS | ITEM NUMBER | CKTS | ITEM NUMBER | CKTS | ITEM NUMBER | CKTS | ITEM NUMBER |
| 02 | 42375-3254 | 20 | 42375-3272 | 02 | 42375-3289 | 20 | 42375-3307 | 02 | 42375-3324 | 20 | 42375-3342 |
| 03 | 42375-3255 | 21 | 42375-3273 | 03 | 42375-3290 | 21 | 42375-3308 | 03 | 42375-3325 | 21 | 42375-3343 |
| 04 | 42375-3256 | 22 | 42375-3274 | 04 | 42375-3291 | 22 | 42375-3309 | 04 | 42375-3326 | 22 | 42375-3344 |
| 05 | 42375-3257 | 23 | 42375-3275 | 05 | 42375-3292 | 23 | 42375-3310 | 05 | 42375-3327 | 23 | 42375-3345 |
| 06 | 42375-3258 | 24 | 42375-3276 | 06 | 42375-3293 | 24 | 42375-3311 | 06 | 42375-3328 | 24 | 42375-3346 |
| 07 | 42375-3259 | 25 | 42375-3277 | 07 | 42375-3294 | 25 | 42375-3312 | 07 | 42375-3329 | 25 | 42375-3347 |
| 08 | 42375-3260 | 26 | 42375-3278 | 08 | 42375-3295 | 26 | 42375-3313 | 08 | 42375-3330 | 26 | 42375-3348 |
| 09 | 42375-3261 | 27 | 42375-3279 | 09 | 42375-3296 | 27 | 42375-3314 | 09 | 42375-3331 | 27 | 42375-3349 |
| 10 | 42375-3262 | 28 | 42375-3280 | 10 | 42375-3297 | 28 | 42375-3315 | 10 | 42375-3332 | 28 | 42375-3350 |
| 11 | 42375-3263 | 29 | 42375-3281 | 11 | 42375-3298 | 29 | 42375-3316 | 11 | 42375-3333 | 29 | 42375-3351 |
| 12 | 42375-3264 | 30 | 42375-3282 | 12 | 42375-3299 | 30 | 42375-3317 | 12 | 42375-3334 | 30 | 42375-3352 |
| 13 | 42375-3265 | 31 | 42375-3283 | 13 | 42375-3300 | 31 | 42375-3318 | 13 | 42375-3335 | 31 | 42375-3353 |
| 14 | 42375-3266 | 32 | 42375-3284 | 14 | 42375-3301 | 32 | 42375-3319 | 14 | 42375-3336 | 32 | 42375-3354 |
| 15 | 42375-3267 | 33 | 42375-3285 | 15 | 42375-3302 | 33 | 42375-3320 | 15 | 42375-3337 | 33 | 42375-3355 |
| 16 | 42375-3268 | 34 | 42375-3286 | 16 | 42375-3303 | 34 | 42375-3321 | 16 | 42375-3338 | 34 | 42375-3356 |
| 17 | 42375-3269 | 35 | 42375-3287 | 17 | 42375-3304 | 35 | 42375-3322 | 17 | 42375-3339 | 35 | 42375-3357 |
| 18 | 42375-3270 | 36 | 42375-3288 | 18 | 42375-3305 | 36 | 42375-3323 | 18 | 42375-3340 | 36 | 42375-3358 |
| 19 | 42375-3271 | | | 19 | 42375-3306 | | | 19 | 42375-3341 | | |
| REV: | <u>ECR/ECN INFORMATION:</u> | | | <u>TITLE:</u> | | | | <u>SHEET No.</u> | | | |
| T15 | EC No.: UCP2009-1249 | | | KK 100 HEADER ASSY FLAT VERTICAL BREAKAWAY | | | | - 22 - | | | |
| | DATE: 12/2/2008 | | | | | | | | | | |
| <u>DOCUMENT NUMBER:</u> | | | | <u>CREATED / REVISED BY:</u> | | <u>CHECKED BY:</u> | | <u>APPROVED BY:</u> | | | |
| SD- 42375-001 | | | | MKIPPER | | JBELL | | FSMITH | | | |
| <small>TEMPLATE FILENAME: PRODUCT_SPEC(SIZE_A)IV.1).DOC</small> | | | | | | | | | | | |

| ENG. NO: 42375-3359 / 3393 | | | | ENG. NO: 42375-3394 / 3428 | | | | ENG. NO: 42375-3429 / 3463 | | | |
|--|-------------|---|-------------|--|-------------|-----------------------------|-------------|-------------------------------|-------------|--------------------|-------------|
| HEADER NUMBER: | | 42312-0036 | | HEADER NUMBER: | | 42312-0036 | | HEADER NUMBER: | | 42312-0036 | |
| PIN NUMBER: | | 42663-ABB228 | | PIN NUMBER: | | 42663-EZB208 | | PIN NUMBER: | | 42663-ARA154 | |
| PIN LENGTH: L | | .455 / 11.56 | | PIN LENGTH: L | | .970/24.64 | | PIN LENGTH: L | | .520/13.21 | |
| MATING LENGTH: M | | .170 / 4.32 | | MATING LENGTH: M | | .780/19.81 | | MATING LENGTH: M | | .386/9.80 | |
| GOLD POINT: G | | .100 / 2.54 | | GOLD POINT: G | | .200/5.08 | | GOLD POINT: G | | N/A | |
| PC TAIL LENGTH: P | | .195 / 4.95 | | PC TAIL LENGTH: P | | .100/ 2.54 | | PC TAIL LENGTH: P | | .044/1.12 | |
| TIN: T | | .100 / 2.54 | | TIN: T | | .200/5.08 | | TIN: T | | OVERALL | |
| CKTS: | | 2-36 | | CKTS: | | 2-36 | | CKTS: | | 2-36 | |
| KINKS: | | NO | | KINKS: | | NO | | KINKS: | | NO | |
| VOIDED CKTS: | | NONE | | VOIDED CKTS: | | NONE | | VOIDED CKTS: | | NONE | |
| PACKAGING: | | BULK PK-40873-0041 | | PACKAGING: | | BULK PK-40873-0043 | | PACKAGING: | | BULK PK-40873-0041 | |
| CKTS | ITEM NUMBER | CKTS | ITEM NUMBER | CKTS | ITEM NUMBER | CKTS | ITEM NUMBER | CKTS | ITEM NUMBER | CKTS | ITEM NUMBER |
| 02 | 42375-3359 | 20 | 42375-3377 | 02 | 42375-3394 | 20 | 42375-3412 | 02 | 42375-3429 | 20 | 42375-3447 |
| 03 | 42375-3360 | 21 | 42375-3378 | 03 | 42375-3395 | 21 | 42375-3413 | 03 | 42375-3430 | 21 | 42375-3448 |
| 04 | 42375-3361 | 22 | 42375-3379 | 04 | 42375-3396 | 22 | 42375-3414 | 04 | 42375-3431 | 22 | 42375-3449 |
| 05 | 42375-3362 | 23 | 42375-3380 | 05 | 42375-3397 | 23 | 42375-3415 | 05 | 42375-3432 | 23 | 42375-3450 |
| 06 | 42375-3363 | 24 | 42375-3381 | 06 | 42375-3398 | 24 | 42375-3416 | 06 | 42375-3433 | 24 | 42375-3451 |
| 07 | 42375-3364 | 25 | 42375-3382 | 07 | 42375-3399 | 25 | 42375-3417 | 07 | 42375-3434 | 25 | 42375-3452 |
| 08 | 42375-3365 | 26 | 42375-3383 | 08 | 42375-3400 | 26 | 42375-3418 | 08 | 42375-3435 | 26 | 42375-3453 |
| 09 | 42375-3366 | 27 | 42375-3384 | 09 | 42375-3401 | 27 | 42375-3419 | 09 | 42375-3436 | 27 | 42375-3454 |
| 10 | 42375-3367 | 28 | 42375-3385 | 10 | 42375-3402 | 28 | 42375-3420 | 10 | 42375-3437 | 28 | 42375-3455 |
| 11 | 42375-3368 | 29 | 42375-3386 | 11 | 42375-3403 | 29 | 42375-3421 | 11 | 42375-3438 | 29 | 42375-3456 |
| 12 | 42375-3369 | 30 | 42375-3387 | 12 | 42375-3404 | 30 | 42375-3422 | 12 | 42375-3439 | 30 | 42375-3457 |
| 13 | 42375-3370 | 31 | 42375-3388 | 13 | 42375-3405 | 31 | 42375-3423 | 13 | 42375-3440 | 31 | 42375-3458 |
| 14 | 42375-3371 | 32 | 42375-3389 | 14 | 42375-3406 | 32 | 42375-3424 | 14 | 42375-3441 | 32 | 42375-3459 |
| 15 | 42375-3372 | 33 | 42375-3390 | 15 | 42375-3407 | 33 | 42375-3425 | 15 | 42375-3442 | 33 | 42375-3460 |
| 16 | 42375-3373 | 34 | 42375-3391 | 16 | 42375-3408 | 34 | 42374-3426 | 16 | 42375-3443 | 34 | 42374-3461 |
| 17 | 42375-3374 | 35 | 42375-3392 | 17 | 42375-3409 | 35 | 42375-3427 | 17 | 42375-3444 | 35 | 42375-3462 |
| 18 | 42375-3375 | 36 | 42375-3393 | 18 | 42375-3410 | 36 | 42375-3428 | 18 | 42375-3445 | 36 | 42375-3463 |
| 19 | 42375-3376 | | | 19 | 42375-3411 | | | 19 | 42375-3446 | | |
| REV: T15 | | ECR/ECN INFORMATION: EC No.: UCP2009-1249 DATE: 12/2/2008 | | TITLE: KK 100 HEADER ASSY FLAT VERTICAL BREAKAWAY | | | | SHEET No. - 23 - | | | |
| DOCUMENT NUMBER: SD- 42375-001 | | | | CREATED / REVISED BY: MKIPPER | | CHECKED BY: JBELL | | APPROVED BY: FSMITH | | | |
| TEMPLATE FILENAME: PRODUCT_SPEC(SIZE_A)(V.1).DOC | | | | | | | | | | | |

| ENG. NO: 42375-3464 / 3498 | | | | ENG. NO: 42375-3499/3533 | | | | ENG. NO: 42375-3534/3568 | | | |
|---|-------------|--|-------------|--|-------------|------------------------------------|-------------|--------------------------------------|-------------|--------------------|-------------|
| HEADER NUMBER: | | 42312-0036 | | HEADER NUMBER: | | 42312-0036 | | HEADER NUMBER: | | 42312-0036 | |
| PIN NUMBER: | | 42663-CJA154 | | PIN NUMBER: | | 42663-ETA154 | | PIN NUMBER: | | 42663-AWB208 | |
| PIN LENGTH: L | | .700/17.78 | | PIN LENGTH: L | | .950/24.13 | | PIN LENGTH: L | | .535/13.59 | |
| MATING LENGTH: M | | .500/12.70 | | MATING LENGTH: M | | .750/19.05 | | MATING LENGTH: M | | .235/5.97 | |
| GOLD POINT: G | | N/A | | GOLD POINT: G | | N/A | | GOLD POINT: G | | .200/5.08 | |
| PC TAIL LENGTH: P | | .110/2.79 | | PC TAIL LENGTH: P | | .110/2.79 | | PC TAIL LENGTH: P | | .210/5.33 | |
| TIN: T | | OVERALL | | TIN: T | | OVERALL | | TIN: T | | .100/2.54 | |
| CKTS: | | 2-36 | | CKTS: | | 2-36 | | CKTS: | | 2-36 | |
| KINKS: | | NO | | KINKS: | | NO | | KINKS: | | NO | |
| VOIDED CKTS: | | # 2 | | VOIDED CKTS: | | NONE | | VOIDED CKTS: | | NONE | |
| PACKAGING: | | BULK PK-40873-0041 | | PACKAGING: | | BULK PK-40873-0043 | | PACKAGING: | | BULK PK-40873-0041 | |
| CKTS | ITEM NUMBER | CKTS | ITEM NUMBER | CKTS | ITEM NUMBER | CKTS | ITEM NUMBER | CKTS | ITEM NUMBER | CKTS | ITEM NUMBER |
| 02 | 42375-3464 | 20 | 42375-3482 | 02 | 42375-3499 | 20 | 42375-3517 | 02 | 42375-3534 | 20 | 42375-3552 |
| 03 | 42375-3465 | 21 | 42375-3483 | 03 | 42375-3500 | 21 | 42375-3518 | 03 | 42375-3535 | 21 | 42375-3553 |
| 04 | 42375-3466 | 22 | 42375-3484 | 04 | 42375-3501 | 22 | 42375-3519 | 04 | 42375-3536 | 22 | 42375-3554 |
| 05 | 42375-3467 | 23 | 42375-3485 | 05 | 42375-3502 | 23 | 42375-3520 | 05 | 42375-3537 | 23 | 42375-3555 |
| 06 | 42375-3468 | 24 | 42375-3486 | 06 | 42375-3503 | 24 | 42375-3521 | 06 | 42375-3538 | 24 | 42375-3556 |
| 07 | 42375-3469 | 25 | 42375-3487 | 07 | 42375-3504 | 25 | 42375-3522 | 07 | 42375-3539 | 25 | 42375-3557 |
| 08 | 42375-3470 | 26 | 42375-3488 | 08 | 42375-3505 | 26 | 42375-3523 | 08 | 42375-3540 | 26 | 42375-3558 |
| 09 | 42375-3471 | 27 | 42375-3489 | 09 | 42375-3506 | 27 | 42375-3524 | 09 | 42375-3541 | 27 | 42375-3559 |
| 10 | 42375-3472 | 28 | 42375-3490 | 10 | 42375-3507 | 28 | 42375-3525 | 10 | 42375-3542 | 28 | 42375-3560 |
| 11 | 42375-3473 | 29 | 42375-3491 | 11 | 42375-3508 | 29 | 42375-3526 | 11 | 42375-3543 | 29 | 42375-3561 |
| 12 | 42375-3474 | 30 | 42375-3492 | 12 | 42375-3509 | 30 | 42375-3527 | 12 | 42375-3544 | 30 | 42375-3562 |
| 13 | 42375-3475 | 31 | 42375-3493 | 13 | 42375-3510 | 31 | 42375-3528 | 13 | 42375-3545 | 31 | 42375-3563 |
| 14 | 42375-3476 | 32 | 42375-3494 | 14 | 42375-3511 | 32 | 42375-3529 | 14 | 42375-3546 | 32 | 42375-3564 |
| 15 | 42375-3477 | 33 | 42375-3495 | 15 | 42375-3512 | 33 | 42375-3530 | 15 | 42375-3547 | 33 | 42375-3565 |
| 16 | 42375-3478 | 34 | 42375-3496 | 16 | 42375-3513 | 34 | 42375-3531 | 16 | 42375-3548 | 34 | 42375-3566 |
| 17 | 42375-3479 | 35 | 42375-3497 | 17 | 42375-3514 | 35 | 42375-3532 | 17 | 42375-3549 | 35 | 42375-3567 |
| 18 | 42375-3480 | 36 | 42375-3498 | 18 | 42375-3515 | 36 | 42375-3533 | 18 | 42375-3550 | 36 | 42375-3568 |
| 19 | 42375-3481 | | | 19 | 42375-3516 | | | 19 | 42375-3551 | | |
| REV: T15 | | <u>ECR/ECN INFORMATION:</u> EC No.: UCP2009-1249 DATE: 12/2/2008 | | <u>TITLE:</u> KK 100 HEADER ASSY FLAT VERTICAL BREAKAWAY | | | | <u>SHEET No.</u> - 24 - | | | |
| <u>DOCUMENT NUMBER:</u> SD- 42375-001 | | | | <u>CREATED / REVISED BY:</u> MKIPPER | | <u>CHECKED BY:</u> JBELL | | <u>APPROVED BY:</u> FSMITH | | | |
| <small>TEMPLATE FILENAME: PRODUCT_SPEC(SIZE_A)(V.1).DOC</small> | | | | | | | | | | | |

ENG. NO: A-42375-3569/3603

| HEADER NUMBER: | 42312-0036 | | | | |
|-------------------|--------------------|------------|------|-----------------|------------|
| PIN NUMBER: | 42663-ABB208 | | | | |
| PIN LENGTH: L | .455 / 11.56 | | | | |
| MATING LENGTH: M | .240 / 6.09 | | | | |
| GOLD POINT: G | .100 / 2.54 | | | | |
| PC TAIL LENGTH: P | .125 / 3.18 | | | | |
| TIN: T | .100 / 2.54 | | | | |
| CKTS: | 4-36 | | | | |
| KINKS: | NO | | | | |
| VOIDED CKTS: | 5 | | | | |
| PACKAGING: | BULK PK-40873-0041 | | | | |
| CKTS | MATERIAL NUMBER | ENG NUMBER | CKTS | MATERIAL NUMBER | ENG NUMBER |
| 02 | | | 20 | 423753587 | 42375-3587 |
| 03 | | | 21 | 423753588 | 42375-3588 |
| 04 | | | 22 | 423753589 | 42375-3589 |
| 05 | 423753572 | 42375-3572 | 23 | 423753590 | 42375-3590 |
| 06 | 423753573 | 42375-3573 | 24 | 423753591 | 42375-3591 |
| 07 | 423753574 | 42375-3574 | 25 | 423753592 | 42375-3592 |
| 08 | 423753575 | 42375-3575 | 26 | 423753593 | 42375-3593 |
| 09 | 423753576 | 42375-3576 | 27 | 423753594 | 42375-3594 |
| 10 | 423753577 | 42375-3577 | 28 | 423753595 | 42375-3595 |
| 11 | 423753578 | 42375-3578 | 29 | 423753596 | 42375-3596 |
| 12 | 423753579 | 42375-3579 | 30 | 423753597 | 42375-3597 |
| 13 | 423753580 | 42375-3580 | 31 | 423753598 | 42375-3598 |
| 14 | 423753581 | 42375-3581 | 32 | 423753599 | 42375-3599 |
| 15 | 423753582 | 42375-3582 | 33 | 423753600 | 42375-3600 |
| 16 | 423753583 | 42375-3583 | 34 | 423753601 | 42375-3601 |
| 17 | 423753584 | 42375-3584 | 35 | 423753602 | 42375-3602 |
| 18 | 423753585 | 42375-3585 | 36 | 423753603 | 42375-3603 |
| 19 | 423753586 | 42375-3586 | | | |

ENG. NO: A-42375-2974/3008

| HEADER NUMBER: | 42312-0036 | | | | |
|-------------------|--------------------|------------|------|-----------------|-------------|
| PIN NUMBER: | 42663-FKB228 | | | | |
| PIN LENGTH: L | 1.020 / 25.91 | | | | |
| MATING LENGTH: M | .805 / 20.45 | | | | |
| GOLD POINT: G | .200 / 5.08 | | | | |
| PC TAIL LENGTH: P | .125 / 3.18 | | | | |
| TIN: T | .200 / 5.08 | | | | |
| CKTS: | 2-36 | | | | |
| KINKS: | NO | | | | |
| VOIDED CKTS: | NONE | | | | |
| PACKAGING: | BULK PK-40873-0043 | | | | |
| CKTS | MATERIAL NUMBER | ENG NUMBER | CKTS | MATERIAL NUMBER | ITEM NUMBER |
| 02 | | | 20 | | |
| 03 | | | 21 | | |
| 04 | | | 22 | | |
| 05 | 423752977 | 42375-2977 | 23 | | |
| 06 | | | 24 | | |
| 07 | | | 25 | | |
| 08 | | | 26 | | |
| 09 | | | 27 | | |
| 10 | | | 28 | | |
| 11 | | | 29 | | |
| 12 | | | 30 | | |
| 13 | | | 31 | | |
| 14 | | | 32 | | |
| 15 | | | 33 | | |
| 16 | | | 34 | | |
| 17 | | | 35 | | |
| 18 | | | 36 | | |
| 19 | | | | | |

REV:

T15ECR/ECN INFORMATION:

EC No.: UCP2009-1249

DATE: 12/2/2008

TITLE:**KK 100 HEADER ASSY
FLAT VERTICAL
BREAKAWAY**SHEET No.**- 25 -**DOCUMENT NUMBER:**SD- 42375-001**CREATED / REVISED BY:**MKIPPER**CHECKED BY:**JBELL**APPROVED BY:**FSMITH**

TEMPLATE FILENAME: PRODUCT_SPEC(SIZE_A)(V.1).DOC

ENG. NO: A-42375-3604/3637

| | |
|-------------------|--------------------|
| HEADER NUMBER: | 42312-0036 |
| PIN NUMBER: | 42663-AXA154 |
| PIN LENGTH: L | .540 / 13.72 |
| MATING LENGTH: M | .380 / 9.65 |
| GOLD POINT: G | N/A |
| PC TAIL LENGTH: P | .070 / 1.78 |
| TIN: T | OVERALL |
| CKTS: | 3-36 |
| KINKS: | NO |
| VOIDED CKTS: | 2 |
| PACKAGING: | BULK PK-40873-0041 |

| CKTS | MATERIAL NUMBER | ENG NUMBER | CKTS | MATERIAL NUMBER | ENG NUMBER |
|------|-----------------|------------|------|-----------------|------------|
| 02 | | | 20 | | |
| 03 | 42375-3604 | | 21 | | |
| 04 | | | 22 | | |
| 05 | | | 23 | | |
| 06 | | | 24 | | |
| 07 | | | 25 | | |
| 08 | | | 26 | | |
| 09 | | | 27 | | |
| 10 | | | 28 | | |
| 11 | | | 29 | | |
| 12 | | | 30 | | |
| 13 | | | 31 | | |
| 14 | | | 32 | | |
| 15 | | | 33 | | |
| 16 | | | 34 | | |
| 17 | | | 35 | | |
| 18 | | | 36 | | |
| 19 | | | | | |

ENG. NO: A-42375-3638/3658

| | |
|-------------------|----------------------------|
| HEADER NUMBER: | 42312-0036 |
| PIN NUMBER: | 42663-ABA154 |
| PIN LENGTH: L | .455 / 11.56 |
| MATING LENGTH: M | .240 / 6.09 |
| GOLD POINT: G | N/A |
| PC TAIL LENGTH: P | .125 / 3.18 |
| TIN: T | OVERALL |
| CKTS: | 2-36 |
| KINKS: | NO |
| VOIDED CKTS: | 2, 4, 6, 8, 10, 12, 14, 16 |
| PACKAGING: | BULK PK-40873-0041 |

| CKTS | MATERIAL NUMBER | ENG NUMBER | CKTS | MATERIAL NUMBER | ITEM NUMBER |
|------|-----------------|------------|------|-----------------|-------------|
| 02 | | | 20 | | |
| 03 | | | 21 | | |
| 04 | | | 22 | | |
| 05 | | | 23 | | |
| 06 | | | 24 | | |
| 07 | | | 25 | | |
| 08 | | | 26 | | |
| 09 | | | 27 | | |
| 10 | | | 28 | | |
| 11 | | | 29 | | |
| 12 | | | 30 | | |
| 13 | | | 31 | | |
| 14 | | | 32 | | |
| 15 | | | 33 | | |
| 16 | | | 34 | | |
| 17 | 423753639 | 42375-3639 | 35 | | |
| 18 | | | 36 | | |
| 19 | | | | | |

| | | | | |
|---|--|------------------------------------|---|-----------------------------------|
| T15 | <u>ECR/ECN INFORMATION:</u> | | KK 100 HEADER ASSY FLAT VERTICAL BREAKAWAY | <u>SHEET No.</u> - 26 - |
| | <u>EC No.:</u> | UCP2009-1249 | | |
| | <u>DATE:</u> | 12/2/2008 | | |
| <u>DOCUMENT NUMBER:</u> SD- 42375-001 | <u>CREATED / REVISED BY:</u> MKIPPER | <u>CHECKED BY:</u> JBELL | <u>APPROVED BY:</u> FSMITH | |

42375

ENG. NO: 42375-3659/3693

| CKTS | MATERIAL NUMBER | ENG NUMBER | CKTS | MATERIAL NUMBER | ENG NUMBER |
|------|-----------------|------------|------|-----------------|------------|
| 02 | 68300-2000 | 42375-3659 | 20 | | 42375-3677 |
| 03 | 68300-2001 | 42375-3660 | 21 | | 42375-3678 |
| 04 | | 42375-3661 | 22 | | 42375-3679 |
| 05 | 68300-2006 | 42375-3662 | 23 | | 42375-3680 |
| 06 | | 42375-3663 | 24 | | 42375-3681 |
| 07 | | 42375-3664 | 25 | | 42375-3682 |
| 08 | | 42375-3665 | 26 | | 42375-3683 |
| 09 | | 42375-3666 | 27 | | 42375-3684 |
| 10 | | 42375-3667 | 28 | | 42375-3685 |
| 11 | | 42375-3668 | 29 | | 42375-3686 |
| 12 | | 42375-3669 | 30 | | 42375-3687 |
| 13 | | 42375-3670 | 31 | | 42375-3688 |
| 14 | | 42375-3671 | 32 | | 42375-3689 |
| 15 | | 42375-3672 | 33 | | 42375-3690 |
| 16 | | 42375-3673 | 34 | | 42375-3691 |
| 17 | | 42375-3674 | 35 | | 42375-3692 |
| 18 | | 42375-3675 | 36 | | 42375-3693 |
| 19 | | 42375-3676 | | | |

ENG. NO: 42375-3694/3728

| CKTS | MATERIAL NUMBER | ENG NUMBER | CKTS | MATERIAL NUMBER | ENG NUMBER |
|------|-----------------|------------|------|-----------------|------------|
| 02 | | 42375-3694 | 20 | | 42375-3712 |
| 03 | | 42375-3695 | 21 | | 42375-3713 |
| 04 | | 42375-3696 | 22 | | 42375-3714 |
| 05 | | 42375-3697 | 23 | | 42375-3715 |
| 06 | | 42375-3698 | 24 | | 42375-3716 |
| 07 | | 42375-3699 | 25 | | 42375-3717 |
| 08 | 68300-2002 | 42375-3700 | 26 | | 42375-3718 |
| 09 | | 42375-3701 | 27 | | 42375-3719 |
| 10 | | 42375-3702 | 28 | | 42375-3720 |
| 11 | | 42375-3703 | 29 | | 42375-3721 |
| 12 | | 42375-3704 | 30 | | 42375-3722 |
| 13 | | 42375-3705 | 31 | | 42375-3723 |
| 14 | | 42375-3706 | 32 | | 42375-3724 |
| 15 | | 42375-3707 | 33 | | 42375-3725 |
| 16 | | 42375-3708 | 34 | | 42375-3726 |
| 17 | | 42375-3709 | 35 | | 42375-3727 |
| 18 | | 42375-3710 | 36 | | 42375-3728 |
| 19 | | 42375-3711 | | | |

REV:

T15

ECR/ECN INFORMATION:

EC No.: UCP2009-1249

DATE: 12/2/2008

TITLE:

**KK 100 HEADER ASSY
FLAT VERTICAL
BREAKAWAY**

SHEET No.

- 27 -

DOCUMENT NUMBER:

SD- 42375-001

CREATED / REVISED BY:

MKIPPER

CHECKED BY:

JBELL

APPROVED BY:

FSMITH

TEMPLATE FILENAME: PRODUCT_SPEC(SIZE_A)(V.1).DOC

| ENG. NO: 42375-3729/3763 | | | | | |
|--------------------------|-----------------|--------------------|------|-----------------|------------|
| HEADER NUMBER: | | 42312-0036 | | | |
| PIN NUMBER: | | 42663-AFB208 | | | |
| PIN LENGTH: L | | .475 / 12.07 | | | |
| MATING LENGTH: M | | .232 / 5.89 | | | |
| GOLD POINT: G | | .150 / 3.81 | | | |
| PC TAIL LENGTH: P | | .153 / 3.89 | | | |
| TIN: T | | .150 / 3.81 | | | |
| CKTS: | | 2-36 | | | |
| KINKS: | | NO | | | |
| VOIDED CKTS: | | 5 | | | |
| PACKAGING: | | BULK PK-40873-0041 | | | |
| CKTS | MATERIAL NUMBER | ENG NUMBER | CKTS | MATERIAL NUMBER | ENG NUMBER |
| 02 | | 42375-3729 | 20 | | 42375-3747 |
| 03 | | 42375-3730 | 21 | | 42375-3748 |
| 04 | | 42375-3731 | 22 | | 42375-3749 |
| 05 | | 42375-3732 | 23 | | 42375-3750 |
| 06 | | 42375-3733 | 24 | | 42375-3751 |
| 07 | | 42375-3734 | 25 | | 42375-3752 |
| 08 | 68300-2007 | 42375-3735 | 26 | | 42375-3753 |
| 09 | | 42375-3736 | 27 | | 42375-3754 |
| 10 | | 42375-3737 | 28 | | 42375-3755 |
| 11 | | 42375-3738 | 29 | | 42375-3756 |
| 12 | | 42375-3739 | 30 | | 42375-3757 |
| 13 | | 42375-3740 | 31 | | 42375-3758 |
| 14 | | 42375-3741 | 32 | | 42375-3759 |
| 15 | | 42375-3742 | 33 | | 42375-3760 |
| 16 | | 42375-3743 | 34 | | 42375-3761 |
| 17 | | 42375-3744 | 35 | | 42375-3762 |
| 18 | | 42375-3745 | 36 | | 42375-3763 |
| 19 | | 42375-3746 | | | |

| ENG. NO: 42375-3764/3798 | | | |
|--------------------------|-------------|--------------------|-------------|
| HEADER NUMBER: | | 42312-0036 | |
| PIN NUMBER: | | 42663-ETA154 | |
| PIN LENGTH: L | | .950/24.13 | |
| MATING LENGTH: M | | .750/19.05 | |
| GOLD POINT: G | | N/A | |
| PC TAIL LENGTH: P | | .110/2.79 | |
| TIN: T | | OVERALL | |
| CKTS: | | 2-36 | |
| KINKS: | | NO | |
| VOIDED CKTS: | | 2 | |
| PACKAGING: | | BULK PK-40873-0043 | |
| CKTS | ITEM NUMBER | CKTS | ITEM NUMBER |
| 02 | | 20 | |
| 03 | | 21 | |
| 04 | | 22 | |
| 05 | | 23 | |
| 06 | | 24 | |
| 07 | | 25 | |
| 08 | 42375-3770 | 26 | |
| 09 | | 27 | |
| 10 | | 28 | |
| 11 | | 29 | |
| 12 | | 30 | |
| 13 | | 31 | |
| 14 | | 32 | |
| 15 | | 33 | |
| 16 | | 34 | |
| 17 | | 35 | |
| 18 | | 36 | |
| 19 | | | |

| | | | | |
|---|-----------------------------|--|--|--------------------------------------|
| REV: T15 | <u>ECR/ECN INFORMATION:</u> | | <u>TITLE:</u> KK 100 HEADER ASSY FLAT VERTICAL BREAKAWAY | <u>SHEET No.</u> - 28 - |
| | EC No.: UCP2009-1249 | DATE: 12/2/2008 | | |
| <u>DOCUMENT NUMBER:</u> SD- 42375-001 | | <u>CREATED / REVISED BY:</u> MKIPPER | <u>CHECKED BY:</u> JBELL | <u>APPROVED BY:</u> FSMITH |

| ENG. NO: 42375-3799/3832 | | | | ENG. NO: 42375-3733/3867 | | | | ENG. NO: 42375-3868 / 3902 | | | |
|---|-----------------|--|-----------------|--|-----------------|------------------------------------|-----------------|--------------------------------------|-------------|--------------------|-------------|
| HEADER NUMBER: | | 42312-0036 | | HEADER NUMBER: | | 42312-0036 | | HEADER NUMBER: | | 42312-0036 | |
| PIN NUMBER: | | 42663-ABA154 | | PIN NUMBER: | | 42663-ABB208 | | PIN NUMBER: | | 42663-DWA154 | |
| PIN LENGTH: L | | .455 / 11.56 | | PIN LENGTH: L | | .455 / 11.56 | | PIN LENGTH: L | | .850 / 21.59 | |
| MATING LENGTH: M | | .240 / 6.09 | | MATING LENGTH: M | | .250 / 6.35 | | MATING LENGTH: M | | .640 / 16.26 | |
| GOLD POINT: G | | N/A | | GOLD POINT: G | | .100 / 2.54 | | GOLD POINT: G | | N/A | |
| PC TAIL LENGTH: P | | .125 / 3.18 | | PC TAIL LENGTH: P | | .115 / 2.92 | | PC TAIL LENGTH: P | | .120 / 3.05 | |
| TIN: T | | OVERALL | | TIN: T | | .100 / 3.18 | | TIN: T | | OVERALL | |
| CKTS: | | 3-36 | | CKTS: | | 2-36 | | CKTS: | | 2-36 | |
| KINKS: | | NO | | KINKS: | | NO | | KINKS: | | NO | |
| VOIDED CKTS: | | 3 | | VOIDED CKTS: | | NONE | | VOIDED CKTS: | | NONE | |
| PACKAGING: | | BULK PK-40873-0041 | | PACKAGING: | | BULK PK-40873-0041 | | PACKAGING: | | BULK PK-40873-0041 | |
| CKTS | MATERIAL NUMBER | CKTS | MATERIAL NUMBER | CKTS | MATERIAL NUMBER | CKTS | MATERIAL NUMBER | CKTS | ITEM NUMBER | CKTS | ITEM NUMBER |
| 02 | | 20 | | 02 | | 20 | | 02 | | 20 | |
| 03 | | 21 | | 03 | | 21 | | 03 | | 21 | |
| 04 | | 22 | | 04 | | 22 | | 04 | 42375-3870 | 22 | |
| 05 | 42375-3801 | 23 | | 05 | 42375-3836 | 23 | | 05 | | 23 | |
| 06 | | 24 | | 06 | | 24 | | 06 | 42375-3872 | 24 | |
| 07 | | 25 | | 07 | | 25 | | 07 | | 25 | |
| 08 | | 26 | | 08 | | 26 | | 08 | | 26 | |
| 09 | | 27 | | 09 | | 27 | | 09 | | 27 | |
| 10 | | 28 | | 10 | | 28 | | 10 | | 28 | |
| 11 | | 29 | | 11 | | 29 | | 11 | | 29 | |
| 12 | | 30 | | 12 | | 30 | | 12 | | 30 | |
| 13 | | 31 | | 13 | | 31 | | 13 | | 31 | |
| 14 | | 32 | | 14 | | 32 | | 14 | | 32 | |
| 15 | | 33 | | 15 | | 33 | | 15 | | 33 | |
| 16 | | 34 | | 16 | | 34 | | 16 | | 34 | |
| 17 | | 35 | | 17 | | 35 | | 17 | | 35 | |
| 18 | | 36 | | 18 | | 36 | | 18 | | 36 | |
| 19 | | | | 19 | | | | 19 | | | |
| REV: T15 | | <u>ECR/ECN INFORMATION:</u> EC No.: UCP2009-1249 DATE: 12/2/2008 | | <u>TITLE:</u> KK 100 HEADER ASSY FLAT VERTICAL BREAKAWAY | | | | <u>SHEET No.</u> - 29 - | | | |
| <u>DOCUMENT NUMBER:</u> SD- 42375-001 | | | | <u>CREATED / REVISED BY:</u> MKIPPER | | <u>CHECKED BY:</u> JBELL | | <u>APPROVED BY:</u> FSMITH | | | |
| <small>TEMPLATE FILENAME: PRODUCT_SPEC(SIZE_A)(V.1).DOC</small> | | | | | | | | | | | |

| ENG. NO: 42375-3903/3932 | | | | ENG. NO: 42375-3933/3964 | | | | ENG. NO: 42375-3965/3995 | | | |
|--------------------------|-----------------|--------------------|-----------------|--------------------------|-----------------|--------------------|-----------------|--------------------------|-----------------|--------------------|-----------------|
| HEADER NUMBER: | | 42312-0036 | | HEADER NUMBER: | | 42312-0036 | | HEADER NUMBER: | | 42312-0036 | |
| PIN NUMBER: | | 42663-BSA154 | | PIN NUMBER: | | 42663-BSA154 | | PIN NUMBER: | | 42663-BSA154 | |
| PIN LENGTH: L | | .630 / 16.00 | | PIN LENGTH: L | | .630 / 16.00 | | PIN LENGTH: L | | .630 / 16.00 | |
| MATING LENGTH: M | | .421 / 10.69 | | MATING LENGTH: M | | .405/10.29 | | MATING LENGTH: M | | .405/10.29 | |
| GOLD POINT: G | | N/A | | GOLD POINT: G | | N/A | | GOLD POINT: G | | N/A | |
| PC TAIL LENGTH: P | | .119 / 3.02 | | PC TAIL LENGTH: P | | .135/3.43 | | PC TAIL LENGTH: P | | .135/3.43 | |
| TIN: T | | OVERALL | | TIN: T | | OVERALL | | TIN: T | | OVERALL | |
| CKTS: | | 7-36 | | CKTS: | | 5-36 | | CKTS: | | 6-36 | |
| KINKS: | | NO | | KINKS: | | YES | | KINKS: | | YES | |
| VOIDED CKTS: | | 7 | | VOIDED CKTS: | | 5 | | VOIDED CKTS: | | 4, 5, 6 | |
| PACKAGING: | | BULK PK-40873-0041 | | PACKAGING: | | BULK PK-40873-0041 | | PACKAGING: | | BULK PK-40873-0041 | |
| CKTS | MATERIAL NUMBER | CKTS | MATERIAL NUMBER | CKTS | MATERIAL NUMBER | CKTS | MATERIAL NUMBER | CKTS | MATERIAL NUMBER | CKTS | MATERIAL NUMBER |
| 02 | | 20 | | 02 | | 20 | | 02 | | 20 | |
| 03 | | 21 | | 03 | | 21 | | 03 | | 21 | |
| 04 | | 22 | | 04 | | 22 | | 04 | | 22 | |
| 05 | | 23 | | 05 | | 23 | | 05 | | 23 | |
| 06 | | 24 | | 06 | | 24 | | 06 | | 24 | |
| 07 | | 25 | | 07 | | 25 | | 07 | | 25 | |
| 08 | 42375-3904 | 26 | | 08 | | 26 | | 08 | | 26 | |
| 09 | | 27 | | 09 | 42375-3937 | 27 | | 09 | 42375-3968 | 27 | |
| 10 | | 28 | | 10 | | 28 | | 10 | | 28 | |
| 11 | | 29 | | 11 | | 29 | | 11 | | 29 | |
| 12 | | 30 | | 12 | | 30 | | 12 | | 30 | |
| 13 | | 31 | | 13 | | 31 | | 13 | | 31 | |
| 14 | | 32 | | 14 | | 32 | | 14 | | 32 | |
| 15 | | 33 | | 15 | | 33 | | 15 | | 33 | |
| 16 | | 34 | | 16 | | 34 | | 16 | | 34 | |
| 17 | | 35 | | 17 | | 35 | | 17 | | 35 | |
| 18 | | 36 | | 18 | | 36 | | 18 | | 36 | |
| 19 | | | | 19 | | | | 19 | | | |

| | | | |
|-------------------------|------------------------------|---|---------------------|
| REV: | <u>ECR/ECN INFORMATION:</u> | <u>TITLE:</u> | <u>SHEET No.</u> |
| T15 | EC No.: UCP2009-1249 | KK 100 HEADER ASSY FLAT VERTICAL BREAKAWAY | - 30 - |
| | DATE: 12/2/2008 | | |
| <u>DOCUMENT NUMBER:</u> | <u>CREATED / REVISED BY:</u> | <u>CHECKED BY:</u> | <u>APPROVED BY:</u> |
| SD- 42375-001 | MKIPPER | JBELL | FSMITH |

TEMPLATE FILENAME: PRODUCT_SPEC(SIZE_A)(V.1).DOC

| ENG. NO: A-42375-3996/4030 | | | | ENG. NO: 42375-4031/4059 | | | | ENG. NO: 42375-4060 / 4094 | | | |
|---|-----------------------------|--------------------|-------------|---|-----------------|--------------------|-----------------|----------------------------|-----------------|--------------------|-----------------|
| HEADER NUMBER: | | 42312-0036 | | HEADER NUMBER: | | 42312-0036 | | HEADER NUMBER: | | 42312-0036 | |
| PIN NUMBER: | | 42663-AXA154 | | PIN NUMBER: | | 42663-ABA154 | | PIN NUMBER: | | 42663-CGA154 | |
| PIN LENGTH: L | | .540 / 13.72 | | PIN LENGTH: L | | .455 / 11.56 | | PIN LENGTH: L | | .690 / 17.53 | |
| MATING LENGTH: M | | .390 / 9.91 | | MATING LENGTH: M | | .240 / 6.09 | | MATING LENGTH: M | | .521 / 13.23 | |
| GOLD POINT: G | | N/A | | GOLD POINT: G | | N/A | | GOLD POINT: G | | N/A | |
| PC TAIL LENGTH: P | | .060 / 1.52 | | PC TAIL LENGTH: P | | .125 / 3.18 | | PC TAIL LENGTH: P | | .079 / 2.01 | |
| TIN: T | | OVERALL | | TIN: T | | OVERALL | | TIN: T | | OVERALL | |
| CKTS: | | 2-36 | | CKTS: | | 8-36 | | CKTS: | | 2-36 | |
| KINKS: | | NO | | KINKS: | | NO | | KINKS: | | NO | |
| VOIDED CKTS: | | NONE | | VOIDED CKTS: | | 2, 4, 6, 8 | | VOIDED CKTS: | | NONE | |
| PACKAGING: | | BULK PK-40873-0041 | | PACKAGING: | | BULK PK-40873-0041 | | PACKAGING: | | BULK PK-40873-0041 | |
| CKTS | ITEM NUMBER | CKTS | ITEM NUMBER | CKTS | MATERIAL NUMBER | CKTS | MATERIAL NUMBER | CKTS | MATERIAL NUMBER | CKTS | MATERIAL NUMBER |
| 02 | | 20 | | 02 | | 20 | | 02 | | 20 | |
| 03 | | 21 | | 03 | | 21 | | 03 | | 21 | |
| 04 | | 22 | | 04 | | 22 | | 04 | | 22 | |
| 05 | | 23 | | 05 | | 23 | | 05 | | 23 | |
| 06 | 42375-4000 | 24 | | 06 | | 24 | | 06 | 42375-4064 | 24 | |
| 07 | 42375-4001 | 25 | | 07 | | 25 | | 07 | | 25 | |
| 08 | | 26 | | 08 | | 26 | | 08 | | 26 | |
| 09 | | 27 | | 09 | 42375-4032 | 27 | | 09 | | 27 | |
| 10 | | 28 | | 10 | | 28 | | 10 | | 28 | |
| 11 | | 29 | | 11 | | 29 | | 11 | | 29 | |
| 12 | | 30 | | 12 | | 30 | | 12 | | 30 | |
| 13 | | 31 | | 13 | | 31 | | 13 | | 31 | |
| 14 | | 32 | | 14 | | 32 | | 14 | | 32 | |
| 15 | | 33 | | 15 | | 33 | | 15 | | 33 | |
| 16 | | 34 | | 16 | | 34 | | 16 | | 34 | |
| 17 | | 35 | | 17 | | 35 | | 17 | | 35 | |
| 18 | | 36 | | 18 | | 36 | | 18 | | 36 | |
| 19 | | | | 19 | | | | 19 | | | |
| REV: | <u>ECR/ECN INFORMATION:</u> | | | <u>TITLE:</u> | | | | <u>SHEET No.</u> | | | |
| T15 | EC No.: UCP2009-1249 | | | KK 100 HEADER ASSY FLAT VERTICAL BREAKAWAY | | | | - 31 - | | | |
| | DATE: 12/2/2008 | | | | | | | | | | |
| <u>DOCUMENT NUMBER:</u> | | | | <u>CREATED / REVISED BY:</u> | | | | <u>CHECKED BY:</u> | | | |
| SD- 42375-001 | | | | MKIPPER | | | | JBELL | | | |
| | | | | | | | | <u>APPROVED BY:</u> | | | |
| | | | | | | | | FSMITH | | | |
| <small>TEMPLATE FILENAME: PRODUCT_SPEC(SIZE_A)(V.1).DOC</small> | | | | | | | | | | | |

| ENG. NO: A-42375-4095/4129 | | | |
|----------------------------|-------------|--------------------|-------------|
| HEADER NUMBER: | | 42312-0036 | |
| PIN NUMBER: | | 42663-DEB228 | |
| PIN LENGTH: L | | .785 / 19.94 | |
| MATING LENGTH: M | | .470 / 11.94 | |
| GOLD POINT: G | | .250 / 6.35 | |
| PC TAIL LENGTH: P | | .225 / 5.72 | |
| TIN: T | | .200 / 5.08 | |
| CKTS: | | 2-36 | |
| KINKS: | | NO | |
| VOIDED CKTS: | | NONE | |
| PACKAGING: | | BULK PK-40873-0041 | |
| CKTS | ITEM NUMBER | CKTS | ITEM NUMBER |
| 02 | | 20 | |
| 03 | | 21 | |
| 04 | | 22 | |
| 05 | | 23 | |
| 06 | | 24 | |
| 07 | | 25 | |
| 08 | | 26 | |
| 09 | | 27 | |
| 10 | 42375-4103 | 28 | |
| 11 | | 29 | |
| 12 | | 30 | |
| 13 | | 31 | |
| 14 | | 32 | |
| 15 | | 33 | |
| 16 | | 34 | |
| 17 | | 35 | |
| 18 | 42375-4111 | 36 | |
| 19 | | | |

| ENG. NO: A-42375-4130/4161 | | | |
|----------------------------|-------------|--------------------|-------------|
| HEADER NUMBER: | | 42312-0036 | |
| PIN NUMBER: | | 42663-ATA154 | |
| PIN LENGTH: L | | .530/13.46 | |
| MATING LENGTH: M | | .320/8.13 | |
| GOLD POINT: G | | N/A | |
| PC TAIL LENGTH: P | | .120/3.05 | |
| TIN: T | | OVERALL | |
| CKTS: | | 5-36 | |
| KINKS: | | YES | |
| VOIDED CKTS: | | 2, 3, 4 | |
| PACKAGING: | | BULK PK-40873-0041 | |
| CKTS | ITEM NUMBER | CKTS | ITEM NUMBER |
| | | 20 | |
| | | 21 | |
| | | 22 | |
| 05 | 42375-4130 | 23 | |
| 06 | | 24 | |
| 07 | | 25 | |
| 08 | | 26 | |
| 09 | | 27 | |
| 10 | | 28 | |
| 11 | | 29 | |
| 12 | | 30 | |
| 13 | | 31 | |
| 14 | | 32 | |
| 15 | | 33 | |
| 16 | | 34 | |
| 17 | | 35 | |
| 18 | | 36 | |
| 19 | | | |

| ENG. NO: 42375-4162/4196 | | | |
|--------------------------|-----------------|--------------------|-----------------|
| HEADER NUMBER: | | 42312-0036 | |
| PIN NUMBER: | | 42663-BSC228 | |
| PIN LENGTH: L | | .630/16.00 | |
| MATING LENGTH: M | | .400/10.16 | |
| GOLD POINT: G | | .345/8.76 | |
| PC TAIL LENGTH: P | | .140/3.56 | |
| TIN: T | | .100/2.54 | |
| CKTS: | | 2-36 | |
| KINKS: | | NO | |
| VOIDED CKTS: | | NONE | |
| PACKAGING: | | BULK PK-40873-0041 | |
| CKTS | MATERIAL NUMBER | CKTS | MATERIAL NUMBER |
| 02 | | 20 | |
| 03 | | 21 | |
| 04 | 42375-4164 | 22 | |
| 05 | 42375-4165 | 23 | |
| 06 | | 24 | |
| 07 | | 25 | |
| 08 | | 26 | |
| 09 | | 27 | |
| 10 | | 28 | |
| 11 | | 29 | |
| 12 | | 30 | |
| 13 | | 31 | |
| 14 | | 32 | |
| 15 | | 33 | |
| 16 | | 34 | |
| 17 | | 35 | |
| 18 | | 36 | |
| 19 | | | |

| | | | | |
|---|-----------------------------|--|--|--------------------------------------|
| REV: T15 | <u>ECR/ECN INFORMATION:</u> | | <u>TITLE:</u> KK 100 HEADER ASSY FLAT VERTICAL BREAKAWAY | <u>SHEET No.</u> - 32 - |
| | <u>EC No.:</u> UCP2009-1249 | <u>DATE:</u> 12/2/2008 | | |
| <u>DOCUMENT NUMBER:</u> SD- 42375-001 | | <u>CREATED / REVISED BY:</u> MKIPPER | <u>CHECKED BY:</u> JBELL | <u>APPROVED BY:</u> FSMITH |

| ENG. NO: A-42375-1622 | | | |
|-----------------------|-----------------|--------------------|-----------------|
| HEADER NUMBER: | | 42312-0036 | |
| PIN NUMBER: | | 42663-AYB208 | |
| PIN LENGTH: L | | .545 / 13.84 | |
| MATING LENGTH: M | | .320 / 8.13 | |
| GOLD POINT: G | | .140 / 3.56 | |
| PC TAIL LENGTH: P | | .135 / 3.43 | |
| TIN: T | | .135 / 3.43 | |
| CKTS: | | 2-36 | |
| KINKS: | | SMES-42003 | |
| VOIDED CKTS: | | 3 | |
| PACKAGING: | | BULK PK-40873-0041 | |
| CKTS | MATERIAL NUMBER | CKTS | MATERIAL NUMBER |
| 02 | | 20 | |
| 03 | | 21 | |
| 04 | | 22 | |
| 05 | | 23 | |
| 06 | | 24 | |
| 07 | | 25 | |
| 08 | | 26 | |
| 09 | 42375-1622 | 27 | |
| 10 | | 28 | |
| 11 | | 29 | |
| 12 | | 30 | |
| 13 | | 31 | |
| 14 | | 32 | |
| 15 | | 33 | |
| 16 | | 34 | |
| 17 | | 35 | |
| 18 | | 36 | |
| 19 | | | |

| ENG. NO: A-42375-4199 | | | |
|-----------------------|-----------------|--------------------|-----------------|
| HEADER NUMBER: | | 42312-0036 | |
| PIN NUMBER: | | 42663-ARB228 | |
| PIN LENGTH: L | | .520 / 13.21 | |
| MATING LENGTH: M | | .230 / 5.84 | |
| GOLD POINT: G | | .140 / 3.56 | |
| PC TAIL LENGTH: P | | .200 / 5.08 | |
| TIN: T | | .135 / 3.43 | |
| CKTS: | | 2-36 | |
| KINKS: | | NO | |
| VOIDED CKTS: | | NONE | |
| PACKAGING: | | BULK PK-40873-0041 | |
| CKTS | MATERIAL NUMBER | CKTS | MATERIAL NUMBER |
| 02 | 42375-4199 | 20 | |
| 03 | | 21 | |
| 04 | | 22 | |
| 05 | | 23 | |
| 06 | | 24 | |
| 07 | | 25 | |
| 08 | | 26 | |
| 09 | | 27 | |
| 10 | | 28 | |
| 11 | | 29 | |
| 12 | | 30 | |
| 13 | | 31 | |
| 14 | | 32 | |
| 15 | | 33 | |
| 16 | | 34 | |
| 17 | | 35 | |
| 18 | | 36 | |
| 19 | | | |

| ENG. NO: A-42375-4200 | | | |
|-----------------------|-----------------|--------------------|-----------------|
| HEADER NUMBER: | | 42312-0036 | |
| PIN NUMBER: | | 42663-ADB208 | |
| PIN LENGTH: L | | .465 / 11.81 | |
| MATING LENGTH: M | | .240 / 6.09 | |
| GOLD POINT: G | | .100 / 2.54 | |
| PC TAIL LENGTH: P | | .135 / 3.43 | |
| TIN: T | | .100 / 2.54 | |
| CKTS: | | 2-36 | |
| KINKS: | | SMES-42003 | |
| VOIDED CKTS: | | 3, 4 | |
| PACKAGING: | | BULK PK-40873-0041 | |
| CKTS | MATERIAL NUMBER | CKTS | MATERIAL NUMBER |
| 02 | | 20 | |
| 03 | | 21 | |
| 04 | | 22 | |
| 05 | 42375-4200 | 23 | |
| 06 | | 24 | |
| 07 | | 25 | |
| 08 | | 26 | |
| 09 | | 27 | |
| 10 | | 28 | |
| 11 | | 29 | |
| 12 | | 30 | |
| 13 | | 31 | |
| 14 | | 32 | |
| 15 | | 33 | |
| 16 | | 34 | |
| 17 | | 35 | |
| 18 | | 36 | |
| 19 | | | |

| | | | | |
|---|--------------------------------|--|--|--------------------------------------|
| REV: T15 | <u>ECR/ECN INFORMATION:</u> | | <u>TITLE:</u> KK 100 HEADER ASSY FLAT VERTICAL BREAKAWAY | <u>SHEET No.</u> - 33 - |
| | <u>EC No.:</u> UCP2009-1249 | <u>DATE:</u> 12/2/2008 | | |
| <u>DOCUMENT NUMBER:</u> SD- 42375-001 | | <u>CREATED / REVISED BY:</u> MKIPPER | <u>CHECKED BY:</u> JBELL | <u>APPROVED BY:</u> FSMITH |

ENG. NO: 42375-4236

| | |
|-------------------|--------------------|
| HEADER NUMBER: | 42312-0036 |
| PIN NUMBER: | 42663-CCA118 |
| PIN LENGTH: L | .670 / 17.02 |
| MATING LENGTH: M | .440 / 11.18 |
| GOLD POINT: G | NA |
| PC TAIL LENGTH: P | .140 / 3.56 |
| TIN: T | OVERALL |
| CKTS: | 2-36 |
| KINKS: | SMES-42003 |
| VOIDED CKTS: | NONE |
| PACKAGING: | BULK PK-40873-0041 |

| CKTS | ITEM NUMBER | CKTS | ITEM NUMBER |
|------|-------------|------|-------------|
| 02 | | 20 | |
| 03 | | 21 | |
| 04 | | 22 | |
| 05 | | 23 | |
| 06 | 42375-4236 | 24 | |
| 07 | | 25 | |
| 08 | | 26 | |
| 09 | | 27 | |
| 10 | | 28 | |
| 11 | | 29 | |
| 12 | | 30 | |
| 13 | | 31 | |
| 14 | | 32 | |
| 15 | | 33 | |
| 16 | | 34 | |
| 17 | | 35 | |
| 18 | | 36 | |
| 19 | | | |

| | | | |
|---|--|--|--------------------------------------|
| REV: T15 | <u>ECR/ECN INFORMATION:</u> EC No.: UCP2009-1249 DATE: 12/2/2008 | <u>TITLE:</u> KK 100 HEADER ASSY FLAT VERTICAL BREAKAWAY | <u>SHEET No.</u> - 34 - |
| <u>DOCUMENT NUMBER:</u> SD- 42375-001 | <u>CREATED / REVISED BY:</u> MKIPPER | <u>CHECKED BY:</u> JBELL | <u>APPROVED BY:</u> FSMITH |