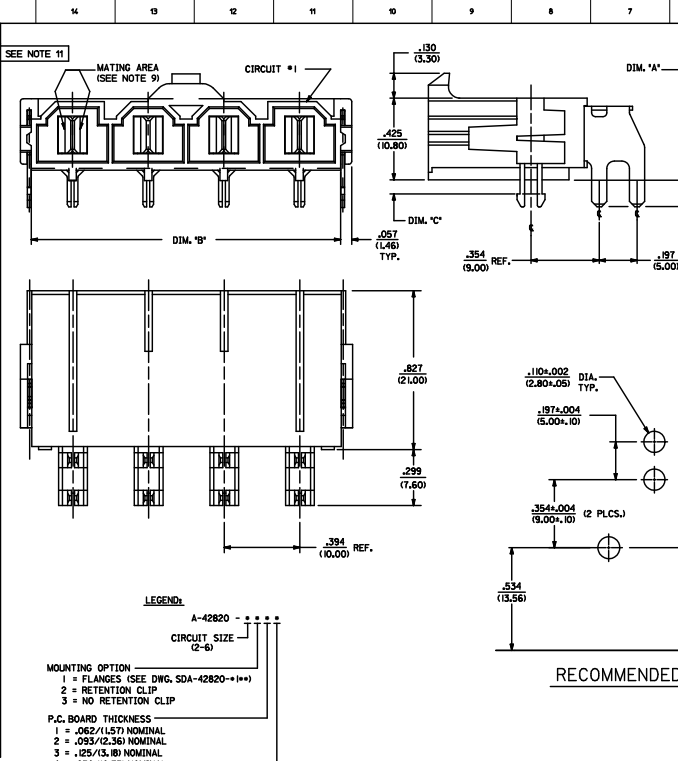
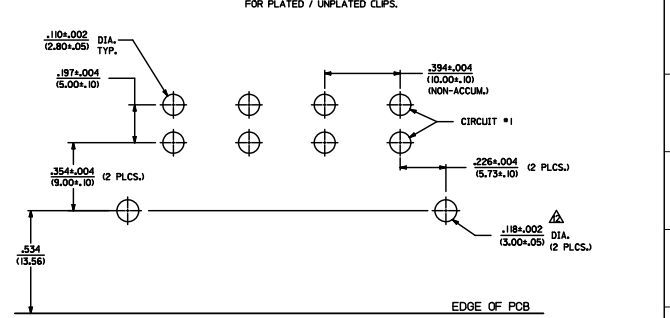


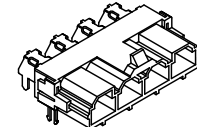
ITEM NUMBER	CKT. SIZE	DIM. "A"	DIM. "B"	DIM. "C"	TERMINAL PLATING	CLIP PLATING
42820-2212	2	.138(3.50)	.823(20.90)	.071(1.80)		
42820-2219	2	.138(3.50)	.823(20.90)	.071(1.80)		
42820-2222	2	.201(5.10)	.823(20.90)	.102(2.60)		
42820-2232	2	.201(5.10)	.823(20.90)	.134(3.40)		
42820-2239	2	.201(5.10)	.823(20.90)	.134(3.40)		
42820-2242	2	.327(8.30)	.823(20.90)	.259(6.58)		
42820-3212	3	.138(3.50)	1.217(30.90)	.071(1.80)		
42820-3222	3	.201(5.10)	1.217(30.90)	.102(2.60)		
42820-3229	3	.201(5.10)	1.217(30.90)	.102(2.60)		
42820-3232	3	.201(5.10)	1.217(30.90)	.134(3.40)		
42820-3242	3	.327(8.30)	1.217(30.90)	.259(6.58)		
42820-4212	4	.138(3.50)	1.610(40.90)	.071(1.80)		
42820-4222	4	.201(5.10)	1.610(40.90)	.102(2.60)		
42820-4232	4	.201(5.10)	1.610(40.90)	.134(3.40)		
42820-4242	4	.327(8.30)	1.610(40.90)	.259(6.58)		
42820-5212	5	.138(3.50)	2.004(50.90)	.071(1.80)		
42820-5222	5	.201(5.10)	2.004(50.90)	.102(2.60)		
42820-5232	5	.201(5.10)	2.004(50.90)	.134(3.40)		
42820-5242	5	.327(8.30)	2.004(50.90)	.259(6.58)		
42820-6212	6	.138(3.50)	2.389(60.90)	.071(1.80)		
42820-6222	6	.201(5.10)	2.389(60.90)	.102(2.60)		
42820-6229	6	.201(5.10)	2.389(60.90)	.102(2.60)		
42820-6232	6	.201(5.10)	2.389(60.90)	.134(3.40)		
42820-6242	6	.327(8.30)	2.389(60.90)	.259(6.58)		
42820-2132	2	.201(5.10)	.823(20.90)	N/A		
42820-2213	2	.138(3.50)	.823(20.90)	.071(1.80)		
42820-2223	2	.201(5.10)	.823(20.90)	.102(2.60)		
42820-2233	2	.201(5.10)	.823(20.90)	.134(3.40)		
42820-2243	2	.327(8.30)	.823(20.90)	.259(6.58)		
42820-3213	3	.138(3.50)	1.217(30.90)	.071(1.80)		
42820-3223	3	.201(5.10)	1.217(30.90)	.102(2.60)		
42820-3233	3	.201(5.10)	1.217(30.90)	.134(3.40)		
42820-3243	3	.327(8.30)	1.217(30.90)	.259(6.58)		
42820-4213	4	.138(3.50)	1.610(40.90)	.071(1.80)		
42820-4223	4	.201(5.10)	1.610(40.90)	.102(2.60)		
42820-4233	4	.201(5.10)	1.610(40.90)	.134(3.40)		
42820-4243	4	.327(8.30)	1.610(40.90)	.259(6.58)		
42820-5213	5	.138(3.50)	2.004(50.90)	.071(1.80)		
42820-5223	5	.201(5.10)	2.004(50.90)	.102(2.60)		
42820-5243	5	.327(8.30)	2.004(50.90)	.259(6.58)		
42820-6213	6	.138(3.50)	2.389(60.90)	.071(1.80)		
42820-6223	6	.201(5.10)	2.389(60.90)	.102(2.60)		
42820-6243	6	.327(8.30)	2.389(60.90)	.259(6.58)		



- NOTES:**
- MATERIAL: HOUSING MATERIAL: 30% GLASS-FILLED NYLON 4/6, U.L., 94V-0, COLOR: BLACK. TERMINAL MATERIAL: ALLOY 15L
 - FINISH: 2 = .000100/.00254 MIN. TIN OVER .000050/.00127 MIN. NICKEL. 3 = .000030/.00076 MIN. SELECT GOLD IN CONTACT AREA. .000100/.00254 MIN. SELECT TIN ON SOLDER TAILS OVER .000050/.00127 MIN. NICKEL.
 - PRODUCT SPECIFICATION: PS-42815-001
 - PACKAGING INFORMATION: SEE MOLEX PACKAGING SPEC. PK-42820-910
 - PART MATES WITH MOLEX RECEPTACLE *42816-***2 WITH TPA.
 - PART IS DESIGNED IN METRIC.
 - AN "X" IN FRONT OF THE ITEM NUMBER INDICATES THE PART IS NOT TOoled.
 - PARTS ARE NOT TO BE MATED OR UNMATED WHILE CIRCUITS ARE LIVE.
 - WHEN USING OVERALL TIN PLATED TERMINALS: FOR APPLICATIONS INVOLVING VIBRATION AND/OR THERMAL CYCLING, MOLEX STRONGLY RECOMMENDS THE USE OF NYE LUBRICANT (RYOCEL 7500) ON THE MATING SURFACES OF THE TERMINAL.
 - PARTS CONFORMS TO CLASS 'B' REQUIREMENTS OF COSMETIC SPECIFICATION PS-45499-002
 - FOR TAPE AND REEL PACKAGING REFER TO PK-45988-004
 - BOARD CLIP HOLE MAY OR MAY NOT BE PLATED. REFER TO CHART FOR PLATED / UNPLATED CLIPS.

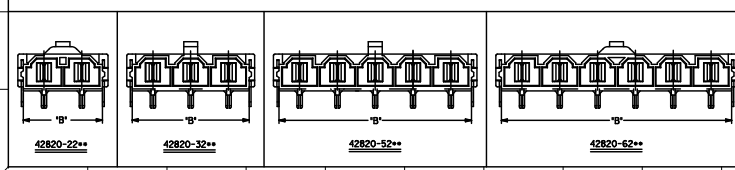


RECOMMENDED P.C. BOARD PLATED-THRU HOLE LAYOUT (4 CKT. SHOWN FOR REF.)



HEADER WITH RT. ANGLE TERMINAL & CLIP

- LEGEND:**
- A-42820 - - - - -
CIRCUIT SIZE (2-6)
- MOUNTING OPTION**
- FLANGES (SEE DWG. SDA-42820-***)
 - RETENTION CLIP
 - NO RETENTION CLIP
- P.C. BOARD THICKNESS**
- .062/(1.57) NOMINAL
 - .093/(2.36) NOMINAL
 - .125/(3.18) NOMINAL
 - .250/(6.35) NOMINAL
- PLATING**
- OR 9 = OVERALL BRIGHT TIN OVER NICKEL
 - OR 8 = SELECT GOLD IN CONTACT AREA
 - OR 7 = SELECT MATTE TIN ON SOLDER TAILS OVER NICKEL



ADD. NOTE: W.P. 2010/08/05 E.C. 2010/08/05 G. 2010/08/05 CHYD-BELL 2010/08/05 APPROV. 2010/08/05	QUALITY SYMBOLS 	GENERAL TOLERANCES (UNLESS SPECIFIED) 4 PLACES ±.005 ±.005 3 PLACES ±.005 ±.005 2 PLACES ±.005 ±.005 1 PLACE ±.010 ±.010 ANGULAR ±1/2°	DIMENSION STYLE IN/MM SCALE 4:1 DESIGN UNITS METRIC THIRD ANGLE PROJECTION	
	DRAWN BY AELHAG 2010/08/05 CHECKED BY JBELL 2010/08/05 APPROVED BY FSNMTH 2010/08/26	TITLE RIGHT ANGLE HEADER ASSEMBLY MINIFIT SR. SERIES MOLEX INCORPORATED	MATERIAL NO. SDA-42820-0002 DOCUMENT NO. SDA-42820-0002	SHEET NO. 1 OF 1
	DRAFT WHERE APPLICABLE MUST REMAIN WITHIN DIMENSIONS			THIS DRAWING CONTAINS INFORMATION THAT IS PROPRIETARY TO MOLEX INCORPORATED AND SHOULD NOT BE USED WITHOUT WRITTEN PERMISSION
	SEE CHART			