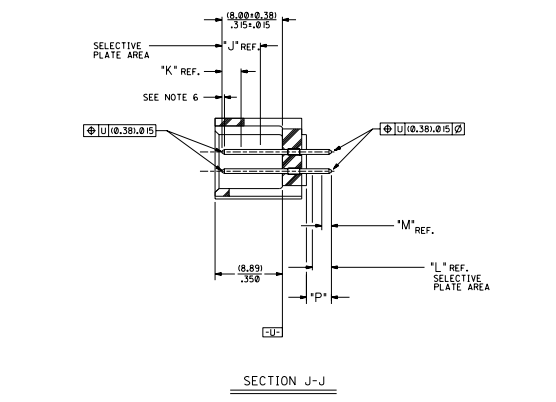
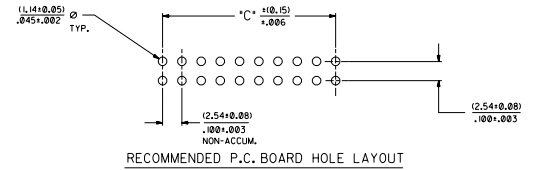
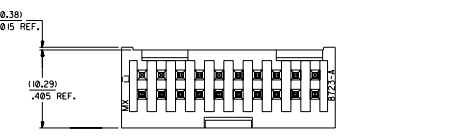
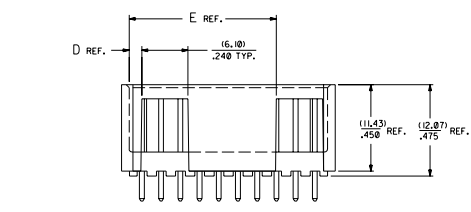
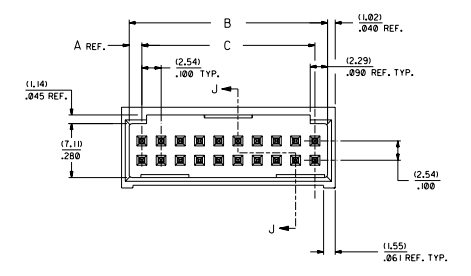
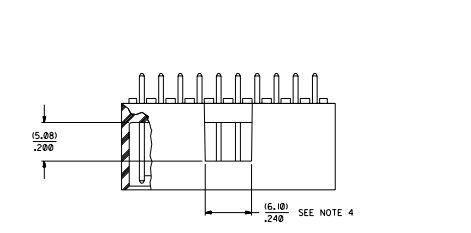


20 19 18 17 16 15 14 13 12 11 10 9 8 7 6 5 4 3 2 1



- NOTES:**
- 20 CIRCUIT SIZE SHOWN FOR ILLUSTRATION PURPOSES.
 - PIN PUSHOUT FORCE(17.79 N/4 LBS.
 - PINS MUST MEET SOLDERABILITY SPEC. MIL-STD-202 METHOD 208B.
 - WINDOW NOT AVAILABLE ON 6 AND 8 CIRCUIT SIZE.
 - FOR CHARTED DIMENSIONS AND ASSEMBLY N.O.S NOT SHOWN ON THIS SHEET - SEE SHEET 2.
 - ROW TO ROW PIN HEIGHT VARIATION MUST NOT EXCEED (0.13)±0.005 IN.
 - PRODUCT CONFORMS TO PS-8723.

CKT.	DIM. "A"	DIM. "B"	DIM. "C"	DIM. "D"	DIM. "E"
06	(1.68) ±0.06	(8.43) ±0.32	(5.08) ±0.20	(1.68) ±0.06	
08	(1.68) ±0.06	(10.97) ±0.43	(7.62) ±0.30	(1.68) ±0.06	
10	(1.68) ±0.06	(13.51) ±0.52	(10.16) ±0.40	(1.68) ±0.06	
12	(1.68) ±0.06	(16.05) ±0.62	(12.70) ±0.50	(1.68) ±0.06	
14	(1.68) ±0.06	(18.59) ±0.72	(15.24) ±0.60	(1.68) ±0.06	
16	(1.68) ±0.06	(21.13) ±0.82	(17.78) ±0.70	(1.68) ±0.06	
18	(1.68) ±0.06	(23.67) ±0.92	(20.32) ±0.80	(1.68) ±0.06	
20	(1.68) ±0.06	(26.21) ±1.02	(22.86) ±0.90	(1.68) ±0.06	
22	(1.68) ±0.06	(28.75) ±1.12	(25.40) ±1.00	(1.68) ±0.06	
24	(1.68) ±0.06	(31.29) ±1.22	(27.94) ±1.10	(1.68) ±0.06	
26	(1.68) ±0.06	(33.83) ±1.32	(30.48) ±1.20	(1.68) ±0.06	
28	(1.68) ±0.06	(36.37) ±1.42	(33.02) ±1.30	(1.68) ±0.06	
30	(1.68) ±0.06	(38.91) ±1.52	(35.56) ±1.40	(1.68) ±0.06	
32	(1.68) ±0.06	(41.45) ±1.62	(38.10) ±1.50	(1.68) ±0.06	
34	(1.68) ±0.06	(43.99) ±1.72	(40.64) ±1.60	(1.68) ±0.06	
36	(1.68) ±0.06	(46.53) ±1.82	(43.18) ±1.70	(1.68) ±0.06	
38	(1.68) ±0.06	(49.07) ±1.92	(45.72) ±1.80	(1.68) ±0.06	
40	(1.68) ±0.06	(51.61) ±2.02	(48.26) ±1.90	(1.68) ±0.06	
42	(1.68) ±0.06	(54.15) ±2.12	(50.80) ±2.00	(1.68) ±0.06	
44	(1.68) ±0.06	(56.69) ±2.22	(53.34) ±2.10	(1.68) ±0.06	
46	(1.68) ±0.06	(59.23) ±2.32	(55.88) ±2.20	(1.68) ±0.06	
48	(1.68) ±0.06	(61.77) ±2.42	(58.42) ±2.30	(1.68) ±0.06	
50	(1.68) ±0.06	(64.31) ±2.52	(60.96) ±2.40	(1.68) ±0.06	
52	(1.68) ±0.06	(66.85) ±2.62	(63.50) ±2.50	(1.68) ±0.06	
54	(1.68) ±0.06	(69.39) ±2.72	(66.04) ±2.60	(1.68) ±0.06	
56	(1.68) ±0.06	(71.93) ±2.82	(68.58) ±2.70	(1.68) ±0.06	
58	(1.68) ±0.06	(74.47) ±2.92	(71.12) ±2.80	(1.68) ±0.06	
60	(1.68) ±0.06	(77.01) ±3.02	(73.66) ±2.90	(1.68) ±0.06	
62	(1.68) ±0.06	(79.55) ±3.12	(76.20) ±3.00	(1.68) ±0.06	
64	(1.68) ±0.06	(82.09) ±3.22	(78.74) ±3.10	(1.68) ±0.06	
66	(1.68) ±0.06	(84.63) ±3.32	(81.28) ±3.20	(1.68) ±0.06	
68	(1.68) ±0.06	(87.17) ±3.42	(83.82) ±3.30	(1.68) ±0.06	
70	(1.68) ±0.06	(89.71) ±3.52	(86.36) ±3.40	(1.68) ±0.06	
72	(1.68) ±0.06	(92.25) ±3.62	(88.90) ±3.50	(1.68) ±0.06	

MATERIAL:
SHROUDED WAFER: GLASS FILLED POLYESTER, 94V-0; COLOR: BLACK.
PINS: PHOSPHOR BRONZE.
SEE SHEET 2 FOR FINISHES.

ASSEMBLY STYLE "A" AND "B"

REVISIONS

NO.	DATE	DESCRIPTION
1		ISSUED FOR PRODUCTION
2		REVISED TO ADD DIMENSIONS
3		REVISED TO ADD DIMENSIONS
4		REVISED TO ADD DIMENSIONS
5		REVISED TO ADD DIMENSIONS
6		REVISED TO ADD DIMENSIONS
7		REVISED TO ADD DIMENSIONS
8		REVISED TO ADD DIMENSIONS
9		REVISED TO ADD DIMENSIONS
10		REVISED TO ADD DIMENSIONS
11		REVISED TO ADD DIMENSIONS
12		REVISED TO ADD DIMENSIONS
13		REVISED TO ADD DIMENSIONS
14		REVISED TO ADD DIMENSIONS
15		REVISED TO ADD DIMENSIONS
16		REVISED TO ADD DIMENSIONS
17		REVISED TO ADD DIMENSIONS
18		REVISED TO ADD DIMENSIONS
19		REVISED TO ADD DIMENSIONS
20		REVISED TO ADD DIMENSIONS

SALES ASSEMBLY
WAFER: STRAIGHT M-FULLY SHROUDED
+100 GRID-FOR USE W/825 SO.PIN
WITH 0.050 END WALLS
MOLEX INCORPORATED
SEE CHART SDA-8723-*****
REV. 4:1

20 19 18 17 16 15 14 13 12 11 10 9 8 7 6 5 4 3 2 1

28		19		18		17		16		15		14		13		12		11		10		9		8		7		6		5		4		3		2		1		
M	ENGINEERING PART NUMBER A-8723-	RELEASE FOR MANUFACTURE	P REF.	PLATING TYPE	CONNECTOR END PLATING				P.C. BOARD END PLATING				PACKAGING				PLATING	TIN	.000150 MINIMUM TIN OVER .000050 MINIMUM NICKEL PLATE.	.000015 MINIMUM GOLD PLATE IN SELECTED AREA AND .000075 MINIMUM TIN IN SELECTED AREA OVER .000050 MINIMUM NICKEL OVER-ALL.	.000030 MINIMUM GOLD PLATE IN SELECTED AREA AND .000075 MINIMUM TIN IN SELECTED AREA OVER .000050 MINIMUM NICKEL OVER-ALL.	.000050 MINIMUM GOLD PLATE IN SELECTED AREA AND .000075 MINIMUM NICKEL OVER-ALL.																		
					TYPE	J LENGTH	K MEAS.		TYPE	L LENGTH	M MEAS.		PK-70873	INFORMATION																										
					TIN	TIN			TIN	TIN																														
	06A164 / 72A164	RFM	(3.30) .130	TIN	TIN		(2.54) .100		TIN		(1.27) .050		0018																											
	06B164 / 72B164	RFM	(5.08) .200	TIN	TIN		(2.54) .100		TIN		(1.27) .050		0018																											
	06A571 / 72A571	RFM	(5.08) .130	IS GOLD	GOLD		(5.08) .200		TIN	(2.54) .100	(1.27) .050		0018																											
	06B571 / 72B571	RFM	(5.08) .200	IS GOLD	GOLD		(5.08) .200		TIN	(2.54) .100	(1.27) .050		0018																											
	06A574 / 72A574	RFM	(5.08) .130	30 GOLD	GOLD		(5.08) .200		TIN	(2.54) .100	(1.27) .050		0018																											
	06B574 / 72B574	RFM	(5.08) .200	30 GOLD	GOLD		(5.08) .200		TIN	(2.54) .100	(1.27) .050		0018																											
	06A596 / 72A596	RFM	(5.08) .130	50 GOLD	GOLD		(5.08) .200		TIN	(2.54) .100	(1.27) .050		0018																											
	06B596 / 72B596	RFM	(5.08) .200	50 GOLD	GOLD		(5.08) .200		TIN	(2.54) .100	(1.27) .050		0018																											

NO. OF CXTS	TIN		TIN		IS GOLD		IS GOLD		30 GOLD		30 GOLD		50 GOLD		50 GOLD	
	EDP NUMBER	ENG NUMBER	EDP NUMBER	ENG NUMBER	EDP NUMBER	ENG NUMBER	EDP NUMBER	ENG NUMBER	EDP NUMBER	ENG NUMBER	EDP NUMBER	ENG NUMBER	EDP NUMBER	ENG NUMBER	EDP NUMBER	ENG NUMBER
06	15-42-6006	A-8723-06A164	15-42-6106	A-8723-06B164	15-29-6006	A-8723-06A571	15-29-6106	A-8723-06B571	15-41-7006	A-8723-06A574	15-41-7106	A-8723-06B574			A-8723-06A596	A-8723-06B596
08	15-42-6008	A-8723-08A164	15-42-6108	A-8723-08B164	15-29-6008	A-8723-08A571	15-29-6108	A-8723-08B571	15-41-7008	A-8723-08A574	15-41-7108	A-8723-08B574			A-8723-08A596	A-8723-08B596
10	15-42-6010	A-8723-10A164	15-42-6110	A-8723-10B164	15-29-6010	A-8723-10A571	15-29-6110	A-8723-10B571	15-41-7010	A-8723-10A574	15-41-7110	A-8723-10B574			A-8723-10A596	A-8723-10B596
12	15-42-6012	A-8723-12A164	15-42-6112	A-8723-12B164	15-29-6012	A-8723-12A571	15-29-6112	A-8723-12B571	15-41-7012	A-8723-12A574	15-41-7112	A-8723-12B574			A-8723-12A596	A-8723-12B596
14	15-42-6014	A-8723-14A164	15-42-6114	A-8723-14B164	15-29-6014	A-8723-14A571	15-29-6114	A-8723-14B571	15-41-7014	A-8723-14A574	15-41-7114	A-8723-14B574			A-8723-14A596	A-8723-14B596
16	15-42-6016	A-8723-16A164	15-42-6116	A-8723-16B164	15-29-6016	A-8723-16A571	15-29-6116	A-8723-16B571	15-41-7016	A-8723-16A574	15-41-7116	A-8723-16B574			A-8723-16A596	A-8723-16B596
18	15-42-6018	A-8723-18A164	15-42-6118	A-8723-18B164	15-29-6018	A-8723-18A571	15-29-6118	A-8723-18B571	15-41-7018	A-8723-18A574	15-41-7118	A-8723-18B574			A-8723-18A596	A-8723-18B596
20	15-42-6020	A-8723-20A164	15-42-6120	A-8723-20B164	15-29-6020	A-8723-20A571	15-29-6120	A-8723-20B571	15-41-7020	A-8723-20A574	15-41-7120	A-8723-20B574			A-8723-20A596	A-8723-20B596
22	15-42-6022	A-8723-22A164	15-42-6122	A-8723-22B164	15-29-6022	A-8723-22A571	15-29-6122	A-8723-22B571	15-41-7022	A-8723-22A574	15-41-7122	A-8723-22B574			A-8723-22A596	A-8723-22B596
24	15-42-6024	A-8723-24A164	15-42-6124	A-8723-24B164	15-29-6024	A-8723-24A571	15-29-6124	A-8723-24B571	15-41-7024	A-8723-24A574	15-41-7124	A-8723-24B574			A-8723-24A596	A-8723-24B596
26	15-42-6026	A-8723-26A164	15-42-6126	A-8723-26B164	15-29-6026	A-8723-26A571	15-29-6126	A-8723-26B571	15-41-7026	A-8723-26A574	15-41-7126	A-8723-26B574			A-8723-26A596	A-8723-26B596
28	15-42-6028	A-8723-28A164	15-42-6128	A-8723-28B164	15-29-6028	A-8723-28A571	15-29-6128	A-8723-28B571	15-41-7028	A-8723-28A574	15-41-7128	A-8723-28B574			A-8723-28A596	A-8723-28B596
30	15-42-6030	A-8723-30A164	15-42-6130	A-8723-30B164	15-29-6030	A-8723-30A571	15-29-6130	A-8723-30B571	15-41-7030	A-8723-30A574	15-41-7130	A-8723-30B574			A-8723-30A596	A-8723-30B596
32	15-42-6032	A-8723-32A164	15-42-6132	A-8723-32B164	15-29-6032	A-8723-32A571	15-29-6132	A-8723-32B571	15-41-7032	A-8723-32A574	15-41-7132	A-8723-32B574			A-8723-32A596	A-8723-32B596
34	15-42-6034	A-8723-34A164	15-42-6134	A-8723-34B164	15-29-6034	A-8723-34A571	15-29-6134	A-8723-34B571	15-41-7034	A-8723-34A574	15-41-7134	A-8723-34B574			A-8723-34A596	A-8723-34B596
36	15-42-6036	A-8723-36A164	15-42-6136	A-8723-36B164	15-29-6036	A-8723-36A571	15-29-6136	A-8723-36B571	15-41-7036	A-8723-36A574	15-41-7136	A-8723-36B574			A-8723-36A596	A-8723-36B596
38	15-42-6038	A-8723-38A164	15-42-6138	A-8723-38B164	15-29-6038	A-8723-38A571	15-29-6138	A-8723-38B571	15-41-7038	A-8723-38A574	15-41-7138	A-8723-38B574			A-8723-38A596	A-8723-38B596
40	15-42-6040	A-8723-40A164	15-42-6140	A-8723-40B164	15-29-6040	A-8723-40A571	15-29-6140	A-8723-40B571	15-41-7040	A-8723-40A574	15-41-7140	A-8723-40B574			A-8723-40A596	A-8723-40B596
42	15-42-6042	A-8723-42A164	15-42-6142	A-8723-42B164	15-29-6042	A-8723-42A571	15-29-6142	A-8723-42B571	15-41-7042	A-8723-42A574	15-41-7142	A-8723-42B574			A-8723-42A596	A-8723-42B596
44	15-42-6044	A-8723-44A164	15-42-6144	A-8723-44B164	15-29-6044	A-8723-44A571	15-29-6144	A-8723-44B571	15-41-7044	A-8723-44A574	15-41-7144	A-8723-44B574			A-8723-44A596	A-8723-44B596
46	15-42-6046	A-8723-46A164	15-42-6146	A-8723-46B164	15-29-6046	A-8723-46A571	15-29-6146	A-8723-46B571	15-41-7046	A-8723-46A574	15-41-7146	A-8723-46B574			A-8723-46A596	A-8723-46B596
48	15-42-6048	A-8723-48A164	15-42-6148	A-8723-48B164	15-29-6048	A-8723-48A571	15-29-6148	A-8723-48B571	15-41-7048	A-8723-48A574	15-41-7148	A-8723-48B574			A-8723-48A596	A-8723-48B596
50	15-42-6050	A-8723-50A164	15-42-6150	A-8723-50B164	15-29-6050	A-8723-50A571	15-29-6150	A-8723-50B571	15-41-7050	A-8723-50A574	15-41-7150	A-8723-50B574			A-8723-50A596	A-8723-50B596
52	15-42-6052	A-8723-52A164	15-42-6152	A-8723-52B164	15-29-6052	A-8723-52A571	15-29-6152	A-8723-52B571	15-41-7052	A-8723-52A574	15-41-7152	A-8723-52B574			A-8723-52A596	A-8723-52B596
54	15-42-6054	A-8723-54A164	15-42-6154	A-8723-54B164	15-29-6054	A-8723-54A571	15-29-6154	A-8723-54B571	15-41-7054	A-8723-54A574	15-41-7154	A-8723-54B574			A-8723-54A596	A-8723-54B596
56	15-42-6056	A-8723-56A164	15-42-6156	A-8723-56B164	15-29-6056	A-8723-56A571	15-29-6156	A-8723-56B571	15-41-7056	A-8723-56A574	15-41-7156	A-8723-56B574			A-8723-56A596	A-8723-56B596
58	15-42-6058	A-8723-58A164	15-42-6158	A-8723-58B164	15-29-6058	A-8723-58A571	15-29-6158	A-8723-58B571	15-41-7058	A-8723-58A574	15-41-7158	A-8723-58B574			A-8723-58A596	A-8723-58B596
60	15-42-6060	A-8723-60A164	15-42-6160	A-8723-60B164	15-29-6060	A-8723-60A571	15-29-6160	A-8723-60B571	15-41-7060	A-8723-60A574	15-41-7160	A-8723-60B574			A-8723-60A596	A-8723-60B596
62	15-42-6062	A-8723-62A164	15-42-6162	A-8723-62B164	15-29-6062	A-8723-62A571	15-29-6162	A-8723-62B571	15-41-7062	A-8723-62A574	15-41-7162	A-8723-62B574			A-8723-62A596	A-8723-62B596
64	15-42-6064	A-8723-64A164	15-42-6164	A-8723-64B164	15-29-6064	A-8723-64A571	15-29-6164	A-8723-64B571	15-41-7064	A-8723-64A574	15-41-7164	A-8723-64B574			A-8723-64A596	A-8723-64B596
66	15-42-6066	A-8723-66A164	15-42-6166	A-8723-66B164	15-29-6066	A-8723-66A571	15-29-6166	A-8723-66B571	15-41-7066	A-8723-66A574	15-41-7166	A-8723-66B574			A-8723-66A596	A-8723-66B596
68	15-42-6068	A-8723-68A164	15-42-6168	A-8723-68B164	15-29-6068	A-8723-68A571	15-29-6168	A-8723-68B571	15-41-7068	A-8723-68A574	15-41-7168	A-8723-68B574			A-8723-68A596	A-8723-68B596
70	15-42-6070	A-8723-70A164	15-42-6170	A-8723-70B164	15-29-6070	A-8723-70A571	15-29-6170	A-8723-70B571	15-41-7070	A-8723-70A574	15-41-7170	A-8723-70B574			A-8723-70A596	A-8723-70B596
72	15-42-6072	A-8723-72A164	15-42-6172	A-8723-72B164	15-29-6072	A-8723-72A571	15-29-6172	A-8723-72B571	15-41-7072	A-8723-72A574	15-41-7172	A-8723-72B574			A-8723-72A596	A-8723-72B596

REVISIONS ONLY RETURNED FROM MANUFACTURE