

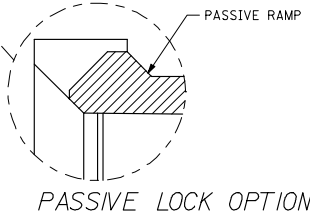
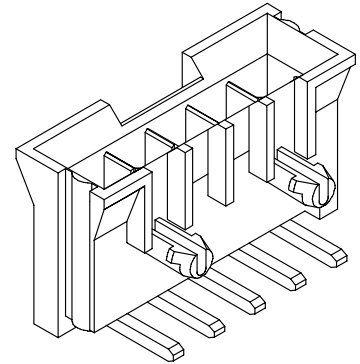
**NOTES:**

- ASSEMBLY NO. 71233-0007 SHOWN FOR ILLUSTRATION.
- MATES WITH PART NO. 71694-\*\*\*\*, AND 5557--.
- SEE FOLLOWING PAGES FOR PART NOS. & CONFIGURATIONS.
- FINISHES (SEE CHARTS):  
 TIN OVERALL - .000150/(0.0038) MINIMUM TIN OVERALL, OVER NICKEL UNDERPLATING OVERALL.  
 30 GOLD - .000030/(0.00076) MINIMUM SELECT GOLD AND .000100/(0.00254) MINIMUM SELECT TIN OVER NICKEL UNDERPLATING OVERALL.  
 15 GOLD - .000015/(0.00038) MINIMUM SELECT GOLD AND .000150/(0.0038) MINIMUM SELECT TIN OVER NICKEL UNDERPLATING OVERALL.
- ITEM NO'S PRECEDED BY AN 'X' IN THE CHARTS ARE NOT AVAILABLE.
- HOUSING MATERIAL: HIGH TEMP. 94V-0 GLASS FILLED POLYESTER MATERIAL COLOR: WHITE.
- PIN MATERIAL: BRASS.
- PART CONFORMS TO SPECIFICATION NO. PS-71690-001.
- PACKAGING SPECIFICATIONS:  
 FOR TRAY, SEE PK-71232-0000  
 FOR TUBE, SEE PK-71233-0000

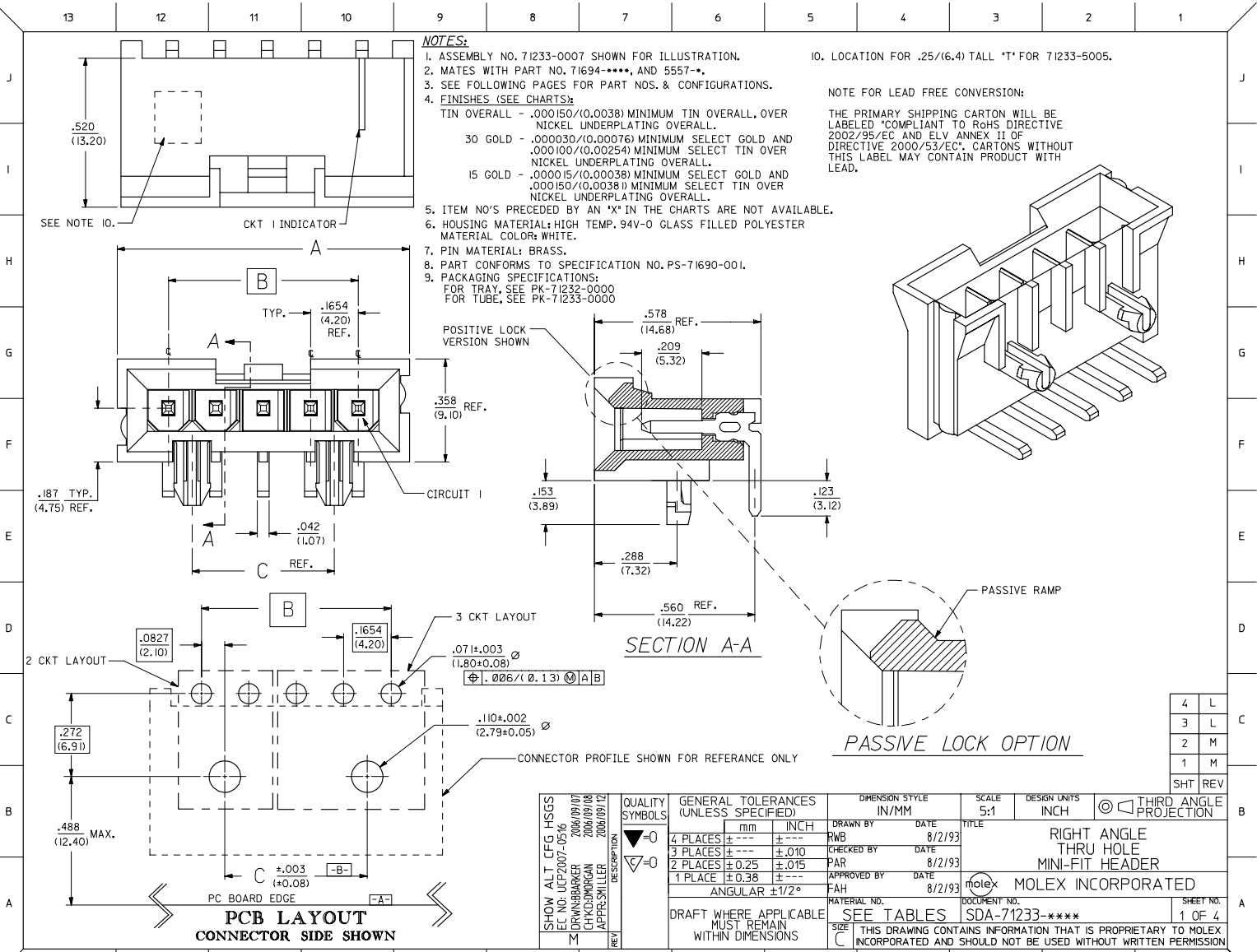
10. LOCATION FOR .25/(6.4) TALL '\*T' FOR 71233-5005.

**NOTE FOR LEAD FREE CONVERSION:**

THE PRIMARY SHIPPING CARTON WILL BE LABELED "COMPLIANT TO ROHS DIRECTIVE 2002/95/EC AND ELV ANNEX II OF DIRECTIVE 2000/53/EC". CARTONS WITHOUT THIS LABEL MAY CONTAIN PRODUCT WITH LEAD.



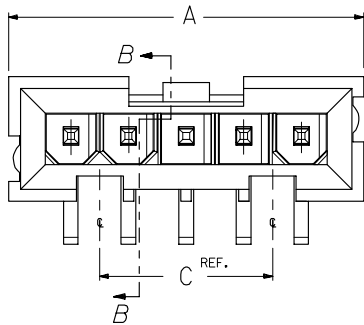
PASSIVE LOCK OPTION



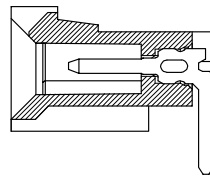
SHOW ALT. CFG. HSGS. EC NO. UCP2007-0516 DRW:WBARGER 2006/09/07 CHK:KIDMORGAN 2006/09/08 APPR:SHILLER 2006/09/12	QUALITY SYMBOLS	GENERAL TOLERANCES (UNLESS SPECIFIED)	DIMENSION STYLE IN/MM	SCALE 5:1	DESIGN UNITS INCH	THIRD ANGLE PROJECTION
	▽=0	4 PLACES ± .010 ± .015	DRAWN BY RWB DATE 8/2/93	TITLE RIGHT ANGLE THRU HOLE MINI-FIT HEADER		
	▽=0	3 PLACES ± .010 ± .015	CHECKED BY PAR DATE 8/2/93	MOLEX INCORPORATED		
	▽=0	2 PLACES ± .025 ± .015	APPROVED BY FAH DATE 8/2/93	MATERIAL NO. SDA-71233-****		
		1 PLACE ± 0.38 ± .010	ANGULAR ±1/2°	SHEET NO. 1 OF 4		
				DRAFT WHERE APPLICABLE MUST REMAIN WITHIN DIMENSIONS		
				SEE TABLES		
				THIS DRAWING CONTAINS INFORMATION THAT IS PROPRIETARY TO MOLEX INCORPORATED AND SHOULD NOT BE USED WITHOUT WRITTEN PERMISSION		

4	L
3	L
2	M
1	M
SHT	REV

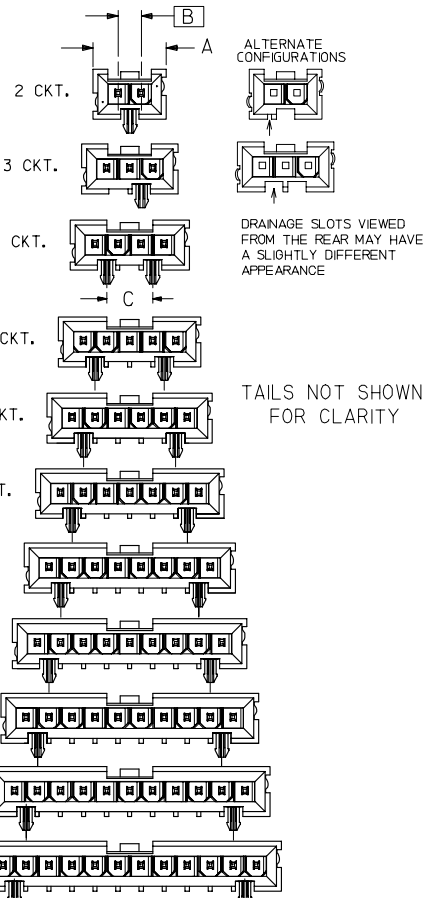
SEE SHEET 1 FOR ALL OTHER INFORMATION



NO PEG OPTION



SECTION B-B



# OVERALL DIMENSIONS

ASSEMBLIES WITH & WITHOUT PEGS

SIZE	DIM. "A"		DIM. "B" BASIC		DIM. "C" REF.	
	INCH	(MM)	INCH	(MM)	INCH	(MM)
2	0.524	(13.3)	0.1654	(4.200)	N/A	N/A
3	0.689	(17.50)	0.3307	(8.400)	N/A	N/A
4	0.855	(21.7)	0.4961	(12.600)	0.330	(8.40)
5	1.020	(25.9)	0.6614	(16.800)	0.496	(12.60)
6	1.185	(30.10)	0.8268	(21.000)	0.661	(16.80)
7	1.351	(34.3)	0.9921	(25.200)	0.826	(21.00)
8	1.516	(38.50)	1.1575	(29.400)	0.992	(25.20)
9	1.682	(42.72)	1.3228	(33.600)	1.157	(29.40)
10	1.847	(46.9)	1.4882	(37.800)	1.322	(33.60)
11	2.012	(51.10)	1.6535	(42.000)	1.488	(37.80)
12	2.177	(55.30)	1.8189	(46.200)	1.653	(42.00)

SHOW ALT. CFG HSGS EC NO. UCP2007-0516 2006/09/07 DRWNSBARKER 2006/09/08 CHKCDKORDAN 2006/09/08 APPR:SHILLER 2006/09/12	QUALITY SYMBOLS	GENERAL TOLERANCES (UNLESS SPECIFIED)	DIMENSION STYLE IN/MM	SCALE ---	DESIGN UNITS INCH	THIRD ANGLE PROJECTION	
	▽=0	4 PLACES ± --- ± ---	DRAWN BY DATE	---	---	---	
	▽=0	3 PLACES ± --- ± .010	RWB 8/2/93	DATE	---	---	TITLE
	▽=0	2 PLACES ± 0.25 ± .015	PAR 8/2/93	CHECKED BY DATE	---	---	SINGLE ROW RIGHT ANGLE THRU HOLE MINIFIT HEADER ASSEMBLY
		1 PLACE ± 0.38 ± ---	FAH 8/2/93	APPROVED BY DATE	---	---	MATERIAL NO. SDA-71233-****
		ANGULAR ±1/2°					MOLEX MOLEX INCORPORATED
							DOCUMENT NO. SDA-71233-****
							SHEET NO. 2 OF 4
							THIS DRAWING CONTAINS INFORMATION THAT IS PROPRIETARY TO MOLEX INCORPORATED AND SHOULD NOT BE USED WITHOUT WRITTEN PERMISSION

### HOUSINGS WITH PEGS

SIZE	STAT	ASSEMBLY ITEM NUMBER	PLATING SEE NOTE 4
2		71233-0001	TIN OVERALL
3		71233-0003	
4		71233-0005	
5		71233-0007	
6		71233-0009	
7		71233-0011	
8		71233-0013	
9		71233-0015	
10		71233-0017	
11		71233-0019	
12		71233-0021	
2		71233-0101	
3		71233-0103	
4		71233-0105	
5		71233-0107	
6		71233-0109	
7		71233-0111	
8		71233-0113	
9		71233-0115	
10		71233-0117	
11		71233-0119	
12		71233-0121	

(POSITIVE LOCK, TRAY PACK)

SIZE	STAT	ASSEMBLY ITEM NUMBER	PLATING SEE NOTE 4
2		71233-0002	TIN OVERALL
3		71233-0004	
4		71233-0006	
5		71233-0008	
6		71233-0010	
7		71233-0012	
8		71233-0014	
9		71233-0016	
10		71233-0018	
11		71233-0020	
12		71233-0022	
2		71233-0102	
3		71233-0104	
4		71233-0106	
5		71233-0108	
6		71233-0110	
7		71233-0112	
8		71233-0114	
9		71233-0116	
10		71233-0118	
11		71233-0120	
12		71233-0122	

(PASSIVE LOCK, TRAY PACK)

### HOUSINGS WITHOUT PEGS

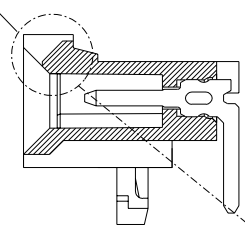
SIZE	STAT	ASSEMBLY ITEM NUMBER	PLATING SEE NOTE 4
2		71233-0201	TIN OVERALL
3		71233-0203	
4		71233-0205	
5		71233-0207	
6		71233-0209	
7		71233-0211	
8		71233-0213	
9		71233-0215	
10		71233-0217	
11		71233-0219	
12		71233-0221	
2		71233-0301	
3		71233-0303	
4		71233-0305	
5		71233-0307	
6		71233-0309	
7		71233-0311	
8		71233-0313	
9		71233-0315	
10		71233-0317	
11		71233-0319	
12		71233-0321	

(POSITIVE LOCK, TRAY PACK)

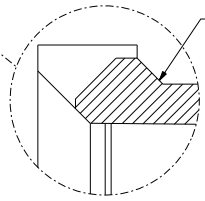
SIZE	STAT	ASSEMBLY ITEM NUMBER	PLATING SEE NOTE 4
2		71233-0202	TIN OVERALL
3		71233-0204	
4		71233-0206	
5		71233-0208	
6		71233-0210	
7		71233-0212	
8		71233-0214	
9		71233-0216	
10		71233-0218	
11		71233-0220	
12		71233-0222	
2		71233-0302	
3		71233-0304	
4		71233-0306	
5		71233-0308	
6		71233-0310	
7		71233-0312	
8		71233-0314	
9		71233-0316	
10		71233-0318	
11		71233-0320	
12		71233-0322	

(PASSIVE LOCK, TRAY PACK)

POSITIVE LOCK VERSION SHOWN



PASSIVE RAMP



L		SEE SHEET I	DIMENSIONS SHOWN (METRIC) INCH		REVISE ONLY ON CAD SYSTEM	
I		SEE SHEET I	SALES OTHERWISE SPECIFIED TOLERANCES ANGULAR ± 0.2°		TITLE SINGLE ROW MINI-FIT HEADER RIGHT ANGLE, BLIND MATE, THRU-HOLE SALES ASSEMBLY	
G		SEE SHEET I	INCH METRIC		MOLEX INCORPORATED SHEET NO. 3 DATE 08/02/93	
F		SEE SHEET I	± 0.005 ---		PART NO. SEE CHART SDA-71233-*****	
E		SEE SHEET I	± 0.1 ± 0.13		FILE NAME 571233P3	
C		SEE SHEET I	± 0.25		NO DRAWING CONTAINS INFORMATION THAT IS PROPRIETARY TO MOLEX INC. AND SHOULD NOT BE USED WITHOUT WRITTEN PERMISSION.	
A		SEE SHEET I	DRAFT WHERE APPLICABLE MUST REMAIN WITHIN DIMENSIONS		DRWG. NO. TC	
LTR.	REVISIONS	LTR.	REVISIONS	DRWG. BY RWB	CHKD. BY PAR	SCALE :
				APP'D. FAH	SCALE :	