

NOTES:

1. ASSEMBLY NO. 71233-0007 SHOWN FOR ILLUSTRATION.
2. MATES WITH PART NO. 71694-****, AND 5557-*,
3. SEE FOLLOWING PAGES FOR PART NOS. & CONFIGURATIONS.
4. FINISHES (SEE CHART):
 TIN OVERALL - .000150/(0.0038) MINIMUM TIN OVERALL, NICKEL UNDERPLATE OVERALL.
 30 GOLD - .000030/(0.00076) MINIMUM SELECT GOLD AND .000100/(0.00254) MINIMUM SELECT TIN OVER NICKEL UNDERPLATE OVERALL.
 15 GOLD - .000015/(0.00038) MINIMUM SELECT GOLD AND .000150/(0.0038) MINIMUM SELECT TIN OVER NICKEL UNDERPLATE OVERALL.
5. ITEM NO'S PRECEDED BY AN "X" IN THE CHARTS ARE NOT AVAILABLE.
6. HOUSING MATERIAL: HIGH TEMP. 94V-0 GLASS FILLED POLYESTER MATERIAL COLOR: WHITE
7. PIN MATERIAL: BRASS.
8. PART CONFORMS TO SPECIFICATION NO. PS-71690-001.
9. PACKAGING SPECIFICATIONS:
 FOR TRAY, SEE PK-71232-0000
 FOR TUBE, SEE PK-71233-0000

CKT 1 INDICATOR

POSITIVE LOCK VERSION SHOWN

CIRCUIT 1

SECTION A-A

.126 STANDARD PCB TAIL VERSION

LONG PCB TAIL VERSIONS
 -06**, -07**, -08**

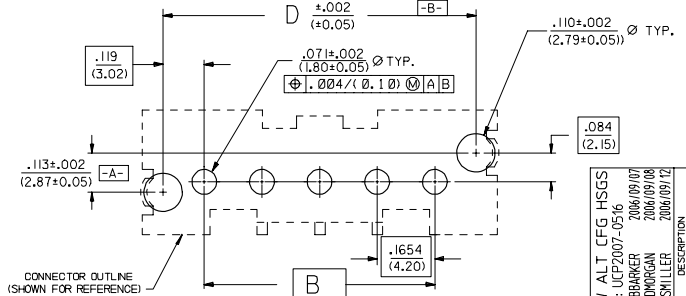
NOTE FOR LEAD FREE CONVERSION:

THE PRIMARY SHIPPING CARTON WILL BE LABELED "COMPLIANT TO ROHS DIRECTIVE 2002/95/EC AND ELV ANNEX II OF DIRECTIVE 2000/53/EC". CARTONS WITHOUT THIS LABEL MAY CONTAIN PRODUCT WITH LEAD.

PASSIVE LOCK OPTION

VERTICAL TAIL HOLE PATTERN

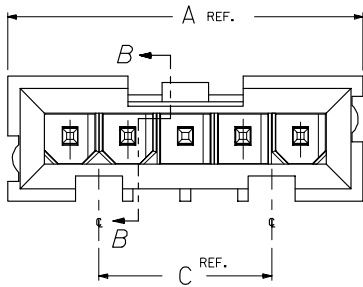
CONNECTOR SIDE SHOWN



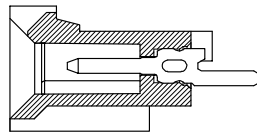
SHOW ALT. CFG. HSGS. EC NO. UCP2007-0516 DRWNSBARKER 2006/09/07 CHPKORDJORDAN 2006/09/08 APPR: SHILLER 2006/09/12	QUALITY SYMBOLS	GENERAL TOLERANCES (UNLESS SPECIFIED)	DIMENSION STYLE	SCALE	DESIGN UNITS	THIRD ANGLE PROJECTION
	$\nabla=0$ $\nabla=0$	4 PLACES ± .010 ± .015 3 PLACES ± .010 ± .015 2 PLACES ± .038 ± .015 1 PLACE ± 0.25 ± .015 ANGULAR ±1/2°	IN/MM	5:1	INCH	<input checked="" type="checkbox"/> THIRD ANGLE PROJECTION
	DRAWN BY: RWB CHECKED BY: PAR APPROVED BY: FAH DATE: 7/19/93	MATERIAL NO. SEE TABLES SIZE: C	TITLE SINGLE ROW MINI-FIT HEADER, VERTICAL, THRU-HOLE SALES DWG MOLEX INCORPORATED	SHEET NO. 1 OF 4		
	DRAFT WHERE APPLICABLE MUST REMAIN WITHIN DIMENSIONS					

4	L
3	L
2	M
1	M

13 12 11 10 9 8 7 6 5 4 3 2 1



SEE SHEET 1 FOR ALL OTHER INFORMATION



SECTION B-B

NO PEG OPTION

VERTICAL CONFIGURATIONS

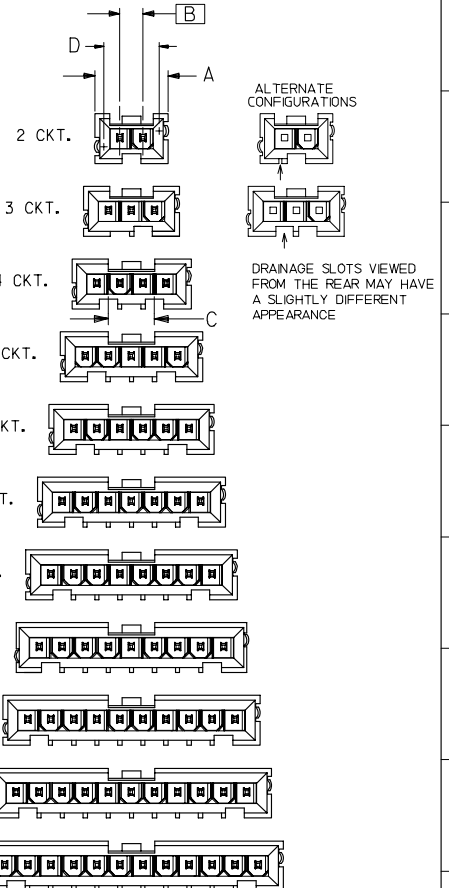
OVERALL DIMENSIONS

ASSEMBLIES WITH PEGS

SIZE	DIM. "A"		DIM. "B" BASIC		DIM. "C" REF.		DIM. "D"	
	INCH	(MM)	INCH	(MM)	INCH	(MM)	INCH	(MM)
2	0.524	(13.3)	0.1654	(4.200)	N/A	N/A	.403	(10.24)
3	0.689	(17.5)	0.3307	(8.400)	N/A	N/A	.569	(14.44)
4	0.855	(21.7)	0.4961	(12.600)	0.330	(8.40)	.734	(18.64)
5	1.020	(25.9)	0.6614	(16.800)	0.496	(12.60)	.899	(22.84)
6	1.185	(30.1)	0.8268	(21.000)	0.661	(16.80)	1.064	(27.04)
7	1.351	(34.3)	0.9921	(25.200)	0.826	(21.00)	1.230	(31.24)
8	1.516	(38.5)	1.1575	(29.400)	0.992	(25.20)	1.395	(35.44)
9	1.682	(42.7)	1.3228	(33.600)	1.157	(29.40)	1.561	(39.64)
10	1.847	(46.9)	1.4882	(37.800)	1.322	(33.60)	1.726	(43.84)
11	2.012	(51.1)	1.6535	(42.000)	1.488	(37.80)	1.891	(48.04)
12	2.177	(55.3)	1.8189	(46.200)	1.653	(42.00)	2.057	(52.24)

ASSEMBLIES WITHOUT PEGS

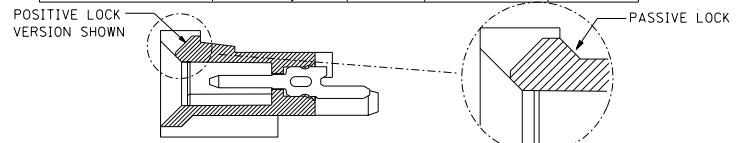
SIZE	DIM. "A"		DIM. "B" BASIC		DIM. "C" REF.	
	INCH	(MM)	INCH	(MM)	INCH	(MM)
2	0.524	(13.3)	0.1654	(4.200)	N/A	N/A
3	0.689	(17.5)	0.3307	(8.400)	N/A	N/A
4	0.855	(21.7)	0.4961	(12.600)	0.330	(8.40)
5	1.020	(25.9)	0.6614	(16.800)	0.496	(12.60)
6	1.185	(30.1)	0.8268	(21.000)	0.661	(16.80)
7	1.351	(34.3)	0.9921	(25.200)	0.826	(21.00)
8	1.516	(38.5)	1.1575	(29.400)	0.992	(25.20)
9	1.682	(42.7)	1.3228	(33.600)	1.157	(29.40)
10	1.847	(46.9)	1.4882	(37.800)	1.322	(33.60)
11	2.012	(51.1)	1.6535	(42.000)	1.488	(37.80)
12	2.177	(55.3)	1.8189	(46.200)	1.653	(42.00)



ADD ALT CONFIGS EC NO. UCP2007-0516 DRWNSBARKER 2006/09/07 CHFKOJORDAN 2006/09/08 APPR:SHILLER 2006/09/12	QUALITY SYMBOLS ▽=0 ▽=0	GENERAL TOLERANCES (UNLESS SPECIFIED) mm INCH 4 PLACES ±.010 ±.015 3 PLACES ±.010 ±.015 2 PLACES ±.038 ±.015 1 PLACE ±.025 ±.015 ANGULAR ±1/2°	DIMENSION STYLE IN/MM DRAWN BY DATE RWB 7/19/93 CHECKED BY DATE PAR 7/19/93 APPROVED BY DATE FAH 7/19/93	SCALE 5:1 DESIGN UNITS INCH THIRD ANGLE PROJECTION	SINGLE ROW MINI-FIT HEADER ASSEMBLY VERTICAL, THRU HOLE MOLEX INCORPORATED
	DRAFT WHERE APPLICABLE MUST REMAIN WITHIN DIMENSIONS		MATERIAL NO. SEE TABLES SIZE C	DOCUMENT NO. SDA-71231-**** MOLEX	SHEET NO. 2 OF 4
	THIS DRAWING CONTAINS INFORMATION THAT IS PROPRIETARY TO MOLEX INCORPORATED AND SHOULD NOT BE USED WITHOUT WRITTEN PERMISSION				
	THIS DRAWING CONTAINS INFORMATION THAT IS PROPRIETARY TO MOLEX INCORPORATED AND SHOULD NOT BE USED WITHOUT WRITTEN PERMISSION				

12 11 10 9 8 7 6 5 4 3 2 1

13							12							11							10							9							8							7							6							71231							4							3							2							1																																																																																										
CKT SIZE	ASSEMBLY NUMBER	TAIL VERSION	PEGS	LOCK	PACKAGING PER	PLATING SEE NOTE 4																													CKT SIZE	ASSEMBLY NUMBER	TAIL VERSION	PEGS	LOCK	PACKAGING PER	PLATING SEE NOTE 4																													CKT SIZE	ASSEMBLY NUMBER	TAIL VERSION	PEGS	LOCK	PACKAGING PER	PLATING SEE NOTE 4																													CKT SIZE	ASSEMBLY NUMBER	TAIL VERSION	PEGS	LOCK	PACKAGING PER	PLATING SEE NOTE 4																													CKT SIZE	ASSEMBLY NUMBER	TAIL VERSION	PEGS	LOCK	PACKAGING PER	PLATING SEE NOTE 4																												
2	71231-0001	STD..125	YES	POSITIVE	PK-71232-0000	TIN OVERALL																													2	71231-0002	STD..125	YES	PASSIVE	PK-71232-0000	TIN OVERALL																													2	71231-0102	STD..125	YES	PASSIVE	PK-71232-0000	30 GOLD																													2	71231-0202	STD..125	NO	PASSIVE	PK-71232-0000	TIN OVERALL																													2	71231-0302	STD..125	NO	PASSIVE	PK-71232-0000	30 GOLD																												
3	71231-0003	STD..125	YES	POSITIVE	PK-71232-0000																														3	71231-0004	STD..125	YES	PASSIVE	PK-71232-0000																														3	71231-0104	STD..125	YES	PASSIVE	PK-71232-0000																														3	71231-0204	STD..125	NO	PASSIVE	PK-71232-0000																														3	71231-0304	STD..125	NO	PASSIVE	PK-71232-0000																													
4	71231-0005	STD..125	YES	POSITIVE	PK-71232-0000																														4	71231-0006	STD..125	YES	PASSIVE	PK-71232-0000																														4	71231-0106	STD..125	YES	PASSIVE	PK-71232-0000																														4	71231-0206	STD..125	NO	PASSIVE	PK-71232-0000																														4	71231-0306	STD..125	NO	PASSIVE	PK-71232-0000																													
5	71231-0007	STD..125	YES	POSITIVE	PK-71232-0000																														5	71231-0008	STD..125	YES	PASSIVE	PK-71232-0000																														5	71231-0108	STD..125	YES	PASSIVE	PK-71232-0000																														5	71231-0208	STD..125	NO	PASSIVE	PK-71232-0000																														5	71231-0308	STD..125	NO	PASSIVE	PK-71232-0000																													
6	71231-0009	STD..125	YES	POSITIVE	PK-71232-0000																														6	71231-0010	STD..125	YES	PASSIVE	PK-71232-0000																														6	71231-0110	STD..125	YES	PASSIVE	PK-71232-0000																														6	71231-0210	STD..125	NO	PASSIVE	PK-71232-0000																														6	71231-0310	STD..125	NO	PASSIVE	PK-71232-0000																													
7	71231-0011	STD..125	YES	POSITIVE	PK-71232-0000																														7	71231-0012	STD..125	YES	PASSIVE	PK-71232-0000																														7	71231-0112	STD..125	YES	PASSIVE	PK-71232-0000																														7	71231-0212	STD..125	NO	PASSIVE	PK-71232-0000																														7	71231-0312	STD..125	NO	PASSIVE	PK-71232-0000																													
8	71231-0013	STD..125	YES	POSITIVE	PK-71232-0000																														8	71231-0014	STD..125	YES	PASSIVE	PK-71232-0000																														8	71231-0114	STD..125	YES	PASSIVE	PK-71232-0000																														8	71231-0214	STD..125	NO	PASSIVE	PK-71232-0000																														8	71231-0314	STD..125	NO	PASSIVE	PK-71232-0000																													
9	71231-0015	STD..125	YES	POSITIVE	PK-71232-0000																														9	71231-0016	STD..125	YES	PASSIVE	PK-71232-0000																														9	71231-0116	STD..125	YES	PASSIVE	PK-71232-0000																														9	71231-0216	STD..125	NO	PASSIVE	PK-71232-0000																														9	71231-0316	STD..125	NO	PASSIVE	PK-71232-0000																													
10	71231-0017	STD..125	YES	POSITIVE	PK-71232-0000																														10	71231-0018	STD..125	YES	PASSIVE	PK-71232-0000																														10	71231-0118	STD..125	YES	PASSIVE	PK-71232-0000																														10	71231-0218	STD..125	NO	PASSIVE	PK-71232-0000																														10	71231-0318	STD..125	NO	PASSIVE	PK-71232-0000																													
11	71231-0019	STD..125	YES	POSITIVE	PK-71232-0000																														11	71231-0020	STD..125	YES	PASSIVE	PK-71232-0000																														11	71231-0120	STD..125	YES	PASSIVE	PK-71232-0000																														11	71231-0220	STD..125	NO	PASSIVE	PK-71232-0000																														11	71231-0320	STD..125	NO	PASSIVE	PK-71232-0000																													
12	71231-0021	STD..125	YES	POSITIVE	PK-71232-0000																														12	71231-0022	STD..125	YES	PASSIVE	PK-71232-0000																														12	71231-0122	STD..125	YES	PASSIVE	PK-71232-0000																														12	71231-0222	STD..125	NO	PASSIVE	PK-71232-0000																														12	71231-0322	STD..125	NO	PASSIVE	PK-71232-0000																													



													REVISIONS													DIMENSIONS SHOWN (METRIC) INCH													REVISE ONLY ON CAD SYSTEM												
													L SEE SHEET I													SALES OTHERWISE SPECIFIED TOLERANCES ANGULAR ± 1/2°													TITLE SINGLE ROW MINI-FIT HEADER VERTICAL THRU-HOLE BLIND MATE SALES ASSEMBLY												
													K SEE SHEET I													DRAFT WHERE APPLICABLE MUST REMAIN WITHIN DIMENSIONS													MOLEX INCORPORATED SHEET NO. 3 DATE 08/02/93												
													LTR. REVISIONS													ORIG. BY RWB													PART NO. SEE CHART SDA-71231-*****												
													LTR. REVISIONS													CHKD. BY PAR													NO DRAWING CONTAINS INFORMATION THAT IS PROPRIETARY TO MOLEX INC. AND SHOULD NOT BE USED WITHOUT WRITTEN PERMISSION.												
													LTR. REVISIONS													APPD. BY FAH													FILE NAME S1233.P3												
													LTR. REVISIONS													SCALE													SIZE TC												

13 12 11 10 9 8 7 6 5 4 3 2 1