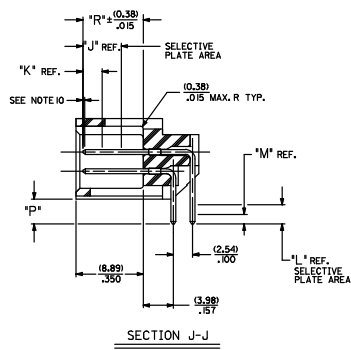
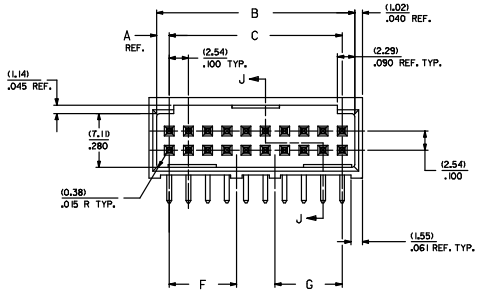
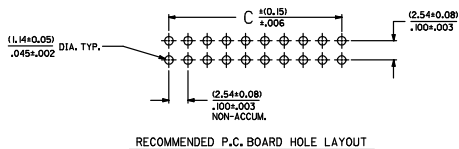
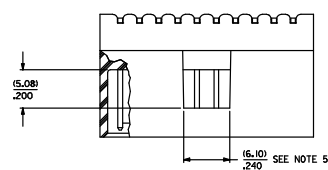


20 19 18 17 16 15 14 13 12 11 10 9 8 7 6 5 4 3 2 1

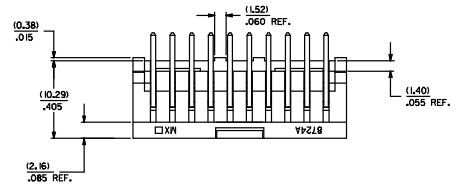


NOTES:

1. MATERIAL: SHROUDED WAFER, GLASS FILLED NYLON, COLOR BLACK, UL94V-0 PINS PHOSPHOR BRONZE
2. FINISH: SEE CHARTS
3. PRODUCT SPECIFICATION: PS-8723
4. PACKAGING INFORMATION: SEE CHARTS
5. WINDOW NOT AVAILABLE ON 6 DKT.
6. FOR CHARTED DIMENSIONS AND ASSEMBLY N.O.S NOT SHOWN ON THIS SHEET - SEE SHEET 2.
7. 20 CIRCUIT SIZE SHOWN FOR ILLUSTRATION PURPOSES.
8. PIN PUSHOUT FORCE: (17.79) N/4 LBS.
9. PINS MUST MEET SOLDERABILITY SPEC. ML-STD-202 METHOD 2008.
10. ROW TO ROW PIN HEIGHT VARIATION MUST NOT EXCEED (0.25)/0.10 IN.
11. THIS PART CONFORMS TO CLASS B REQUIREMENTS OF COSMETIC SPECIFICATION PS-45499-002.

DKT.	DIM. 'A'	DIM. 'B'	DIM. 'C'	DIM. 'D'	DIM. 'E'	DIM. 'F'	DIM. 'G'
06	(1.68) .065	(6.43) .132	(5.08) .206	(1.68) .065			
08	(1.68) .065	(10.97) .232	(7.62) .206	(1.68) .065			
10	(1.68) .065	(15.51) .250	(10.16) .206	(1.68) .065			
12	(1.68) .065	(15.05) .250	(12.70) .206	(1.68) .065			
14	(1.68) .065	(18.59) .250	(15.24) .206	(1.68) .065			
16	(1.68) .065	(21.13) .250	(17.78) .206	(1.68) .065			
18	(1.68) .065	(23.67) .250	(20.32) .206	(1.68) .065			
20	(1.68) .065	(26.21) .250	(22.86) .206	(1.68) .065			
22	(1.68) .065	(28.75) .250	(25.40) .206	(1.68) .065			
24	(1.68) .065	(31.29) .250	(27.94) .206	(1.68) .065			
26	(1.68) .065	(33.83) .250	(30.48) .206	(1.68) .065			
28	(1.68) .065	(36.37) .250	(33.02) .206	(1.68) .065			
30	(1.68) .065	(38.91) .250	(35.56) .206	(1.68) .065			
32	(1.68) .065	(41.45) .250	(38.10) .206	(1.68) .065			
34	(1.68) .065	(43.99) .250	(40.64) .206	(1.68) .065			
36	(1.68) .065	(46.53) .250	(43.18) .206	(1.68) .065			
38	(1.68) .065	(49.07) .250	(45.72) .206	(1.68) .065			
40	(1.68) .065	(51.61) .250	(48.26) .206	(1.68) .065			
42	(1.68) .065	(54.15) .250	(50.80) .206	(1.68) .065			
44	(1.68) .065	(56.69) .250	(53.34) .206	(1.68) .065			
46	(1.68) .065	(59.23) .250	(55.88) .206	(1.68) .065			
48	(1.68) .065	(61.77) .250	(58.42) .206	(1.68) .065			
50	(1.68) .065	(64.31) .250	(60.96) .206	(1.68) .065			
52	(1.68) .065	(66.85) .250	(63.50) .206	(1.68) .065			
54	(1.68) .065	(69.39) .250	(66.04) .206	(1.68) .065			
56	(1.68) .065	(71.93) .250	(68.58) .206	(1.68) .065			
58	(1.68) .065	(74.47) .250	(71.12) .206	(1.68) .065			
60	(1.68) .065	(77.01) .250	(73.66) .206	(1.68) .065			
62	(1.68) .065	(79.55) .250	(76.20) .206	(1.68) .065			
64	(1.68) .065	(82.09) .250	(78.74) .206	(1.68) .065			
66	(1.68) .065	(84.63) .250	(81.28) .206	(1.68) .065			
68	(1.68) .065	(87.17) .250	(83.82) .206	(1.68) .065			
70	(1.68) .065	(89.71) .250	(86.36) .206	(1.68) .065			
72	(1.68) .065	(92.25) .250	(88.90) .206	(1.68) .065			

ASSEMBLY STYLES "A", "B", AND "G"



ADD. NOTES: EDC: M/C 2008-4539 RY: CHYD-BELL APPROV: 2008/07/20 REV: 2008/07/20	QUALITY SYMBOLS ▽=0 ▽=0.1	GENERAL TOLERANCES (UNLESS SPECIFIED) 4 PLACES ± .010 3 PLACES ± .015 2 PLACES ± 0.25 ± .014 1 PLACE ± 0.36 ± .014 ANGULAR ±1/2°	DIMENSION STYLE MM/IN SCALE: 4:1 DESIGN UNITS: INCH THIRD ANGLE PROJECTION	SALES ASSEMBLY WAFER-RIGHT ANGLE FULLY SHROUDED .100 GRID MOLEX INCORPORATED	SHEET NO. 1 OF 8	
	DRAWN BY: JL CHECKED BY: NB APPROVED BY: MAZ DATE: 1986/06/26	MATERIAL NO.: SEE CHART DOCUMENT NO.: SDA-8724-*****	THIS DRAWING CONTAINS INFORMATION THAT IS PROPRIETARY TO MOLEX INCORPORATED AND SHOULD NOT BE USED WITHOUT WRITTEN PERMISSION			
	DRAFT WHERE APPLICABLE MUST REMAIN WITHIN DIMENSIONS					
	SALES ASSEMBLY WAFER-RIGHT ANGLE FULLY SHROUDED .100 GRID MOLEX INCORPORATED					

