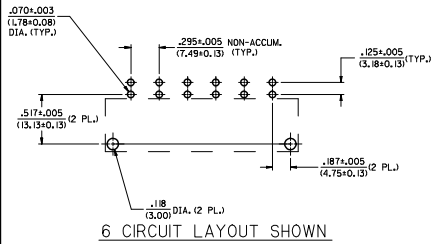


SEE SHEET 5 AND 6 FOR ITEM NUMBER CHART

RECOMMENDED P.C. BOARD LAYOUT FOR RIGHT ANGLE HEADERS

SCALE 2:1



6 CIRCUIT LAYOUT SHOWN

NOTES:

- INSULATOR MATERIAL (SEE CHART)
A = 30% GLASS-FILLED 46 NYLON, 94V-0, COLOR: BLACK
TERMINAL MATERIAL: C26000 BRASS
- TERMINAL FINISH: 35 MICRON (0.88 MICROMETER) MINIMUM TIN OVER 20 MICRON (0.50 MICROMETER) MINIMUM COPPER.
* THE PRIMARY SHIPPING CARTON WILL BE LABELED "COMPLIANT TO RoHS DIRECTIVE 2002/95/EC AND ELY ANNEX II OF DIRECTIVE 2000/53/EC." CARTONS WITHOUT THIS LABEL MAY CONTAIN PRODUCT WITH TIN-LEAD IN THE PC TAILS.
- PRODUCT SPECIFICATION: PSX-44441-9999.
- PACKAGING: SEE CHART.
- THESE HEADERS MATE WITH 43179, 43335, OR 44441 RECEPTACLE HOUSINGS.
- SEE SHEETS 1, 2 AND 3 FOR VERTICAL HEADER ASSEMBLIES AND THEIR RESPECTIVE PART NUMBERS.
- SEE SHEETS 4, 5 AND 6 FOR RIGHT ANGLE HEADER ASSEMBLIES AND THEIR RESPECTIVE PART NUMBERS.
- DIMENSIONS ARE FOR REFERENCE ONLY UNLESS INDICATED OTHERWISE.

SOLDER TAIL DIM. 'A' ±.011(0.28)	BOARD LOCK DIM. 'B' ±.004(0.10)
SHORT .150(3.81)	.062 .070(1.78)
LONG .210(5.33)	.094 .102(2.59)
	.125 .133(3.38)

SOLDER TAIL DIM. 'A' ±.011(0.28)	BOARD LOCK DIM. 'B' ±.004(0.10)
SHORT .150(3.81)	.062 .070(1.78)
LONG .210(5.33)	.094 .102(2.59)
	.125 .133(3.38)

REMOVE DIM. DIMS FROM DRAWING SYSTEMS (E2000/0105) CHYKDAIAG 2000/0105 APPROV. SETH 2000/0105 REV. DESCRIPTION	QUALITY SYMBOLS	GENERAL TOLERANCES (UNLESS SPECIFIED)	DIMENSION STYLE	SCALE	DESIGN UNITS	THIRD ANGLE PROJECTION	
	4 PLACES ±.005 ±.005 3 PLACES ±.005 ±.005 2 PLACES ±.013 ±.013 1 PLACE ±.025 ±.025	MIN INCH ±.005 ±.01 ±.025	IN/MM ±.005 ±.01 ±.025	IN/MM	3:1	INCH	<input checked="" type="checkbox"/> THIRD ANGLE PROJECTION <input type="checkbox"/> FIRST ANGLE PROJECTION
	DRAWN BY DATE DC 11/30/95 CHECKED BY DATE KBP 11/30/95 APPROVED BY DATE RAS 11/30/95	MATERIAL NO. SEE CHART DRAWING NO. SDA-43160-XXXX	TITLE SABRE HEADER ASSY RT. ANGLE, 2-6 & 8 CIR. .125/(3.18)X.020/(0.51)	DOCUMENT NO. MOLEX INCORPORATED	SHEET NO. 4 OF 6		
	DRAFT WHERE APPLICABLE MUST REMAIN WITHIN DIMENSIONS						THIS DRAWING CONTAINS INFORMATION THAT IS PROPRIETARY TO MOLEX INCORPORATED AND SHOULD NOT BE USED WITHOUT WRITTEN PERMISSION

RT. ANGLE HEADER ASSEMBLY ITEM NO.	PART CHARACTERISTICS FOR RIGHT ANGLE HEADER				PACKAGING SPECIFICATIONS
	CIRCUIT SIZE	HSG. MAT'L (SEE NOTE II)	SOLDER TAIL	BOARD LOCK	
43160-1102	2	A	SHORT	N/A	PK-43160-0010
43160-1302	2	A	LONG	N/A	PK-43789-001
43160-3102	2	A	SHORT	.062	PK-43789-001
43160-5102	2	A	SHORT	.094	PK-43789-001
43160-5302	2	A	LONG	.094	PK-43789-001
43160-7302	2	A	LONG	.125	PK-43789-001
43160-1103	3	A	SHORT	N/A	PK-43160-0010
43160-1303	3	A	LONG	N/A	PK-43789-001
43160-3103	3	A	SHORT	.062	PK-43789-001
43160-5103	3	A	SHORT	.094	PK-43789-001
43160-5303	3	A	LONG	.094	PK-43789-001
43160-7303	3	A	LONG	.125	PK-43789-001

RT. ANGLE HEADER ASSEMBLY ITEM NO.	PART CHARACTERISTICS FOR RIGHT ANGLE HEADER				PACKAGING SPECIFICATIONS
	CIRCUIT SIZE	HSG. MAT'L (SEE NOTE II)	SOLDER TAIL	BOARD LOCK	
43160-1104	4	A	SHORT	N/A	PK-43160-0010
43160-1304	4	A	LONG	N/A	PK-43789-001
43160-3104	4	A	SHORT	.062	PK-43789-001
43160-5104	4	A	SHORT	.094	PK-43789-001
43160-5304	4	A	LONG	.094	PK-43789-001
43160-7304	4	A	LONG	.125	PK-43789-001
43160-1105	5	A	SHORT	N/A	PK-43160-0010
43160-1305	5	A	LONG	N/A	PK-43789-001
43160-3105	5	A	SHORT	.062	PK-43789-001
43160-5105	5	A	SHORT	.094	PK-43789-001
43160-5305	5	A	LONG	.094	PK-43789-001
43160-7305	5	A	LONG	.125	PK-43789-001

RT. ANGLE HEADER ASSEMBLY ITEM NO.	PART CHARACTERISTICS FOR RIGHT ANGLE HEADER				PACKAGING SPECIFICATIONS
	CIRCUIT SIZE	HSG. MAT'L (SEE NOTE II)	SOLDER TAIL	BOARD LOCK	
43160-1106	6	A	SHORT	N/A	PK-43160-0010
43160-1306	6	A	LONG	N/A	PK-43789-001
43160-3106	6	A	SHORT	.062	PK-43789-001
43160-5106	6	A	SHORT	.094	PK-43789-001
43160-5306	6	A	LONG	.094	PK-43789-001
43160-7306	6	A	LONG	.125	PK-43789-001

REMOVE DIM. DIM. PINS SEE MOLEX DRAWING 2000/0105 DRAWING NUMBER 2000/0105 CHECKED BY CHIKO DAIKING APPROVED BY [Signature]	QUALITY SYMBOLS	GENERAL TOLERANCES (UNLESS SPECIFIED)	DIMENSION STYLE	SCALE	DESIGN UNITS	THIRD ANGLE PROJECTION	
	▽=0 ▽=0	4 PLACES ±.005 ±.005 3 PLACES ±.010 ±.010 2 PLACES ±0.13 ±.01 1 PLACE ±0.25 ±.01 ANGULAR ±1/2°	IN/MM INCH	DRAWN BY DATE 11/30/95	1:1 INCH	INCH	THIRD ANGLE PROJECTION
	DRAWN BY DATE 11/30/95 CHECKED BY DATE 11/30/95 APPROVED BY DATE 11/30/95	MATERIAL NO. SEE CHART DRAFT WHERE APPLICABLE MUST REMAIN WITHIN DIMENSIONS	TITLE SABRE HEADER ASSY RT. ANGLE, 2-6 & 8 CIR. .125/(3.18)X.020/(0.51)	APPROVED BY DATE RAS	MOLEX INCORPORATED	MOLEX INCORPORATED	SHEET NO. 5 OF 6
	THIS DRAWING CONTAINS INFORMATION THAT IS PROPRIETARY TO MOLEX INCORPORATED AND SHOULD NOT BE USED WITHOUT WRITTEN PERMISSION	DOCUMENT NO. SDA-43160-XXXX	MOLEX INCORPORATED	MOLEX INCORPORATED	MOLEX INCORPORATED	MOLEX INCORPORATED	SHEET NO. 5 OF 6