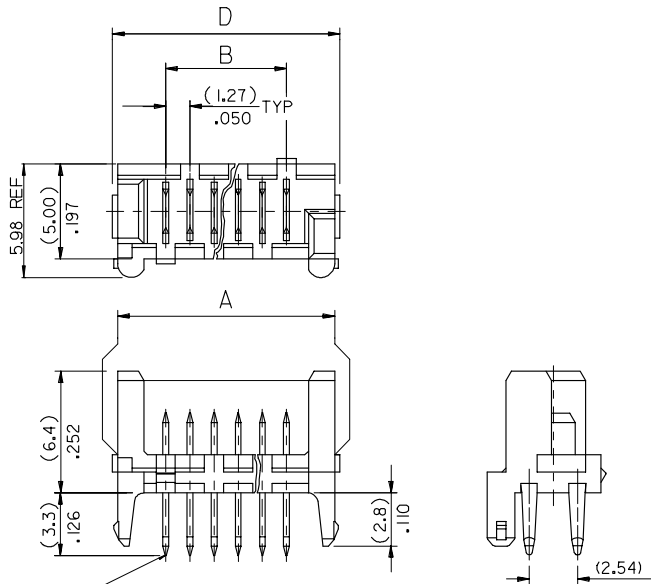


10 9 8 7 6 5 4 3 2 1



| | | | | | | |
|--------------|-------------|---------------|---------------|---------------|---------------|-------------------|
| 90325 - **26 | 26 | (36.80)/1.449 | (31.75)/1.250 | (35.35)/1.392 | (37.26)/1.467 | 14 |
| - **24 | 24 | (34.26)/1.349 | (29.21)/1.150 | (32.81)/1.292 | (34.72)/1.367 | 15 |
| - **22 | 22 | (31.72)/1.249 | (26.67)/1.050 | (30.27)/1.192 | (32.18)/1.267 | 16 |
| - **20 | 20 | (29.18)/1.149 | (24.13)/.950 | (27.73)/1.092 | (29.64)/1.167 | 18 |
| - **18 | 18 | (26.64)/1.049 | (21.59)/.850 | (25.19)/.992 | (27.10)/1.067 | 19 |
| - **16 | 16 | (24.10)/.949 | (19.05)/.750 | (22.65)/.892 | (24.56)/.967 | 22 |
| - **14 | 14 | (21.56)/.849 | (16.51)/.650 | (20.11)/.792 | (22.02)/.867 | 24 |
| - **12 | 12 | (19.02)/.749 | (13.97)/.550 | (17.57)/.692 | (19.48)/.767 | 27 |
| - **10 | 10 | (16.48)/.649 | (11.43)/.450 | (15.03)/.592 | (16.94)/.667 | 32 |
| - **08 | 8 | (13.94)/.549 | (8.89)/.350 | (12.49)/.492 | (14.40)/.567 | 36 |
| - **06 | 6 | (11.40)/.449 | (6.35)/.250 | (9.95)/.392 | (11.86)/.467 | 44 |
| 90325 - **04 | 4 | (8.86)/.349 | (3.81)/.150 | (7.41)/.292 | (9.32)/.367 | 57 |
| PART NO. | NO. OF CKTS | DIM. A | DIM. B | DIM. C | DIM. D | NO. ASSYS IN TUBE |

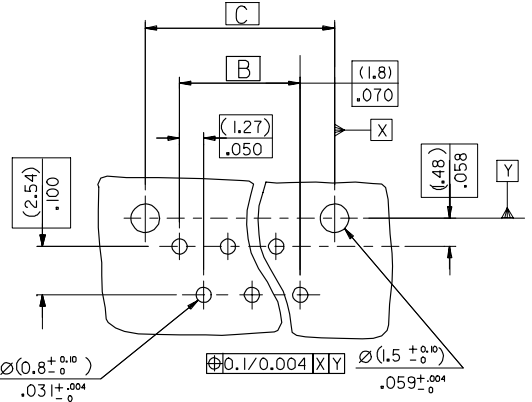
CIRCUIT No. 1 90325- * * * * *

CIRCUIT SIZE 04 CKT TO 26 CKT

0 = HOUSING : COLOUR BLACK
 9 = HOUSING : CUSTOMER SPECIFIC (COLOUR BLACK)

0= 3-5um TIN ASSY
 3= 0.76um GOLD ASSY
 5= NON STANDARD VOIDED OPTION SEE SHEET 2
 6= ROUND PEG WITH KINKS OPTION SEE SHEET 3
 7= 0.76um GOLD, TUBED
 9= 3-5um TIN ASSY TUBED

PCB LAYOUT VIEWED FROM SOLDER SIDE. BOARD (1.60±0.14) THK .063±0.006 THK.



NOTES:
 1. HOUSING MATL. POLYESTER PBT 15% GLASS FILLED TO UL94 V-0.
 2. TER. MATL. BRASS (0.28)/.011 THK
 PLATING. TIN: (1.27um)/50u* MIN NICKEL UNDER (3-5um)/120-200u* TIN
 PLATING. GOLD: (1.27um)/50u* MIN. NICKEL UNDER (3-5um)/120-200u* TIN SELECTIVE AND (0.76um)/30u* SELECTIVE GOLD
 3. CONFORMS TO PRODUCT SPECIFICATION PS-99020-0011

| | | | | | | | |
|---|-------------------------------|--|-----------------------------|-----------------------------------|------------------------------------|--------------------------|--|
| ADD CKT.1 INDICATOR EC NO: E2007-0083 DRAWN: MASZKIEM/07/2006/09/11 CHKD: J. DENNEY 2006/09/11 APPR: J. DENNEY 2006/09/13 | QUALITY SYMBOLS ▽=0 ▽=0 | GENERAL TOLERANCES (UNLESS SPECIFIED) | DIMENSION STYLE MM/IN | SCALE 5:1 | DESIGN UNITS METRIC | THIRD ANGLE PROJECTION | |
| | | 4 PLACES ± --- ± --- 3 PLACES ± --- ± .008 2 PLACES ± 0.20 ± .008 1 PLACE ± 0.20 ± --- ANGULAR ±1/2° | DRAWN BY DMCN 2001/05/29 | CHECKED BY ROCONNOR 2001/05/29 | APPROVED BY MWHILITE 2001/05/29 | TITLE HEADER ASSEMBLY | MATERIAL NO. SDA-90325 |
| DRAFT WHERE APPLICABLE MUST REMAIN WITHIN DIMENSIONS | | SEE CHART | | MOLLEX INCORPORATED | | | THIS DRAWING CONTAINS INFORMATION THAT IS PROPRIETARY TO MOLLEX INCORPORATED AND SHOULD NOT BE USED WITHOUT WRITTEN PERMISSION |

9 8 7 6 5 4 3 2 1