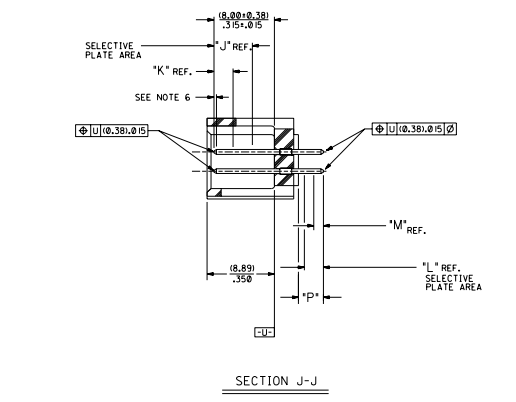
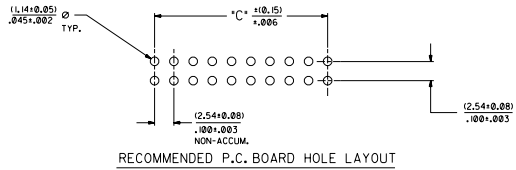
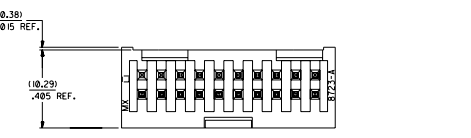
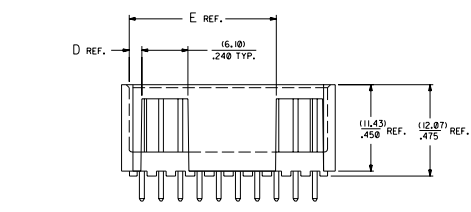
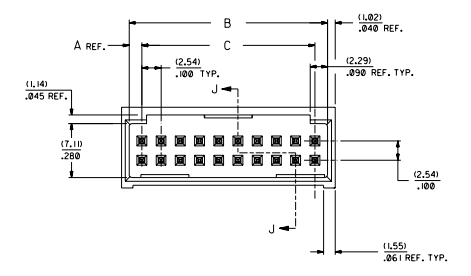
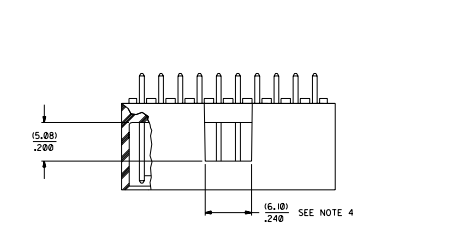


20 19 18 17 16 15 14 13 12 11 10 9 8 7 6 5 4 3 2 1



NOTES:

- 20 CIRCUIT SIZE SHOWN FOR ILLUSTRATION PURPOSES.
- PIN PUSHOUT FORCE (17.79 N/4 LBS).
- PINS MUST MEET SOLDERABILITY SPEC. MIL-STD-202 METHOD 208B.
- WINDOW NOT AVAILABLE ON 6 AND 8 CIRCUIT SIZE.
- FOR CHARTED DIMENSIONS AND ASSEMBLY N.O.S NOT SHOWN ON THIS SHEET - SEE SHEET 2.
- ROW TO ROW PIN HEIGHT VARIATION MUST NOT EXCEED (0.13) ± 0.005 IN.
- PRODUCT CONFORMS TO PS-8723.

CKT.	DIM. "A"	DIM. "B"	DIM. "C"	DIM. "D"	DIM. "E"
06	(1.68) ± 0.06	(8.43) ± 0.32	(5.08) ± 0.20	(1.68) ± 0.06	
08	(1.68) ± 0.06	(10.97) ± 0.43	(7.62) ± 0.30	(1.68) ± 0.06	
10	(1.68) ± 0.06	(13.41) ± 0.52	(10.16) ± 0.40	(1.68) ± 0.06	
12	(1.68) ± 0.06	(15.85) ± 0.62	(12.70) ± 0.50	(1.68) ± 0.06	
14	(1.68) ± 0.06	(18.29) ± 0.72	(15.24) ± 0.60	(1.68) ± 0.06	
16	(1.68) ± 0.06	(20.73) ± 0.82	(17.78) ± 0.70	(1.68) ± 0.06	
18	(1.68) ± 0.06	(23.17) ± 0.92	(20.32) ± 0.80	(1.68) ± 0.06	
20	(1.68) ± 0.06	(25.61) ± 1.02	(22.86) ± 0.90	(1.68) ± 0.06	
22	(1.68) ± 0.06	(28.05) ± 1.12	(25.40) ± 1.00	(1.68) ± 0.06	
24	(1.68) ± 0.06	(30.49) ± 1.22	(27.94) ± 1.10	(1.68) ± 0.06	
26	(1.68) ± 0.06	(32.93) ± 1.32	(30.48) ± 1.20	(1.68) ± 0.06	
28	(1.68) ± 0.06	(35.37) ± 1.42	(33.02) ± 1.30	(1.68) ± 0.06	
30	(1.68) ± 0.06	(37.81) ± 1.52	(35.56) ± 1.40	(1.68) ± 0.06	
32	(1.68) ± 0.06	(40.25) ± 1.62	(38.10) ± 1.50	(1.68) ± 0.06	
34	(1.68) ± 0.06	(42.69) ± 1.72	(40.64) ± 1.60	(1.68) ± 0.06	
36	(1.68) ± 0.06	(45.13) ± 1.82	(43.18) ± 1.70	(1.68) ± 0.06	
38	(1.68) ± 0.06	(47.57) ± 1.92	(45.72) ± 1.80	(1.68) ± 0.06	
40	(1.68) ± 0.06	(50.01) ± 2.02	(48.26) ± 1.90	(1.68) ± 0.06	
42	(1.68) ± 0.06	(52.45) ± 2.12	(50.80) ± 2.00	(1.68) ± 0.06	
44	(1.68) ± 0.06	(54.89) ± 2.22	(53.34) ± 2.10	(1.68) ± 0.06	
46	(1.68) ± 0.06	(57.33) ± 2.32	(55.88) ± 2.20	(1.68) ± 0.06	
48	(1.68) ± 0.06	(59.77) ± 2.42	(58.42) ± 2.30	(1.68) ± 0.06	
50	(1.68) ± 0.06	(62.21) ± 2.52	(60.96) ± 2.40	(1.68) ± 0.06	
52	(1.68) ± 0.06	(64.65) ± 2.62	(63.50) ± 2.50	(1.68) ± 0.06	
54	(1.68) ± 0.06	(67.09) ± 2.72	(66.04) ± 2.60	(1.68) ± 0.06	
56	(1.68) ± 0.06	(69.53) ± 2.82	(68.58) ± 2.70	(1.68) ± 0.06	
58	(1.68) ± 0.06	(71.97) ± 2.92	(71.12) ± 2.80	(1.68) ± 0.06	
60	(1.68) ± 0.06	(74.41) ± 3.02	(73.66) ± 2.90	(1.68) ± 0.06	
62	(1.68) ± 0.06	(76.85) ± 3.12	(76.20) ± 3.00	(1.68) ± 0.06	
64	(1.68) ± 0.06	(79.29) ± 3.22	(78.74) ± 3.10	(1.68) ± 0.06	
66	(1.68) ± 0.06	(81.73) ± 3.32	(81.28) ± 3.20	(1.68) ± 0.06	
68	(1.68) ± 0.06	(84.17) ± 3.42	(83.82) ± 3.30	(1.68) ± 0.06	
70	(1.68) ± 0.06	(86.61) ± 3.52	(86.36) ± 3.40	(1.68) ± 0.06	
72	(1.68) ± 0.06	(89.05) ± 3.62	(88.90) ± 3.50	(1.68) ± 0.06	

MATERIAL:
SHROUDED WAFER: GLASS FILLED POLYESTER, 94V-0; COLOR: BLACK.
PINS: PHOSPHOR BRONZE.
SEE SHEET 2 FOR FINISHES.

ASSEMBLY STYLE "A" AND "B"

REVISIONS

REV.	DATE	DESCRIPTION
1		ISSUED FOR PRODUCTION
2		REVISED TO ADD DIMENSIONS
3		REVISED TO ADD DIMENSIONS
4		REVISED TO ADD DIMENSIONS
5		REVISED TO ADD DIMENSIONS
6		REVISED TO ADD DIMENSIONS
7		REVISED TO ADD DIMENSIONS
8		REVISED TO ADD DIMENSIONS
9		REVISED TO ADD DIMENSIONS
10		REVISED TO ADD DIMENSIONS
11		REVISED TO ADD DIMENSIONS
12		REVISED TO ADD DIMENSIONS
13		REVISED TO ADD DIMENSIONS
14		REVISED TO ADD DIMENSIONS
15		REVISED TO ADD DIMENSIONS
16		REVISED TO ADD DIMENSIONS
17		REVISED TO ADD DIMENSIONS
18		REVISED TO ADD DIMENSIONS
19		REVISED TO ADD DIMENSIONS
20		REVISED TO ADD DIMENSIONS

SALES ASSEMBLY
WAFER: STRAIGHT M-FULLY SHROUDED
+100 GRID-FOR USE W/ 825 SO. PINS
WITH 0.005 END WALLS
MOLEX INCORPORATED
SEE CHART SDA-8723-*****
REV. 4:1

20 19 18 17 16 15 14 13 12 11 10 9 8 7 6 5 4 3 2 1

