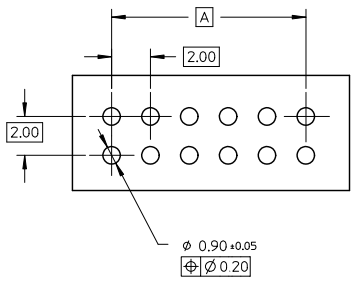
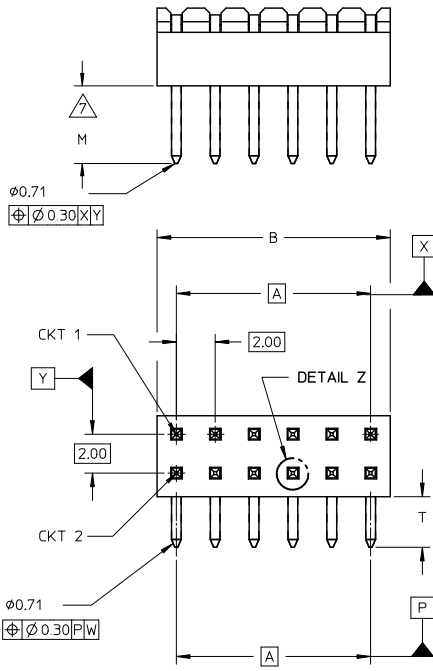
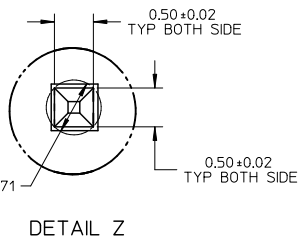
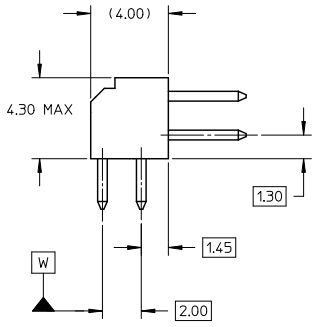


10 9 8 7 6 5 4 3 2 1



RECOMMENDED PCB LAYOUT



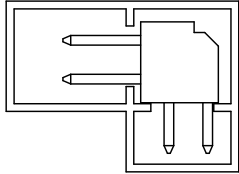
NOTES:

- 1. MATERIAL:
 - HSG: PCT, 30% GLASS FILLED, JUL 94V-0, COLOUR BLACK.
 - PIN: 0.50MM SQ PHOSPHOR BRONZE 510
- △ PLATING:
 - ***6 - 0.38um MIN GOLD IN CONTACT AREA, 1.90um MIN TIN IN SOLDER TAIL AREA, BOTH OVER 1.27um MIN NICKEL OVERALL
 - ***7 - 0.76um MIN GOLD IN CONTACT AREA, 1.90um MIN TIN IN SOLDER TAIL AREA, BOTH OVER 1.27um MIN NICKEL OVERALL
 - ***8 - 2.54um MIN TIN OVER 1.27um MIN NICKEL OVERALL
- 3. 12 CKT USED FOR ILLUSTRATION ONLY
- 4. PART TO BE PACKED IN POCKET TRAY/TUBE (SEE TABLE).
- 5. PRODUCT SPEC PS-87761-100 APPLIES.
- 6. RECOMMENDED PCB BOARD THK 1.60±0.10 MM.
- △ MATING LENGTH:
 - 1 - 4.00MM
 - 2 - 3.50MM
 - 3 - 3.06MM
 - 4 - 5.75MM
- △ PART NUMBERS THAT ARE UNAVAILABLE IN THIS SD:
 - 87760-0646, 87760-1046, 87760-1446, 87760-2446, 87760-4046.
 - (REFER TO SD-87760-133 FOR THESE PART NUMBERS)

LEGEND:



ADD NOTE 8: EEC NO: S2011-0568 DRWNSKANG CHYKATSEE APPR: MLONG 2011/01/04 2011/01/24 2011/01/25 A13	QUALITY SYMBOLS	GENERAL TOLERANCES (UNLESS SPECIFIED)	DIMENSION STYLE	SCALE	DESIGN UNITS	THIRD ANGLE PROJECTION	
	▽=0	mm INCH	MM ONLY	NTS	METRIC		
	▽=0	4 PLACES ± --- ± ---	DRAWN BY DATE	TITLE			
	▽=0	3 PLACES ± --- ± ---	KSEE 2003/10/15	MGRID, 2MM DUAL ROW HDR. R/A			
	2 PLACES ± 0.2 ± ---	CHECKED BY DATE	DRAWN BY DATE				
	1 PLACE ± --- ± ---	KCL ING 2003/12/02	CHECKED BY DATE				
	ANGULAR ± 3 °	APPROVED BY DATE	APPROVED BY DATE				
	DRAFT WHERE APPLICABLE MUST REMAIN WITHIN DIMENSIONS	SKTOH 2003/12/11	SKTOH 2003/12/11				
		MATERIAL NO.	SEE TABLE		DOCUMENT NO.		
		SIZE	A 3		SD-87760-109		
		THIS DRAWING CONTAINS INFORMATION THAT IS PROPRIETARY TO MOLEX INCORPORATED AND SHOULD NOT BE USED WITHOUT WRITTEN PERMISSION				SHEET NO. 1 OF 3	

	10	9	8	7	6	5	4	3	2	1
	PART NUMBER	VOID PIN LOCATION	CKT SIZE	A	B	M	T	PACKAGING TYPE		
F	87760-04**	-	04	2.00	4.00	REFER TO NOTE \triangle 7	2.60	TRAY	 <p>PART IN TUBE</p>	
	87760-06** \triangle 8	-	06	4.00	6.00					
	87760-08**	-	08	6.00	8.00					
	87760-10** \triangle 8	-	10	8.00	10.00					
	87760-12** \triangle 8	-	12	10.00	12.00					
	87760-14** \triangle 8	-	14	12.00	14.00					
E	87760-16**	-	16	14.00	16.00					
	87760-18**	-	18	16.00	18.00					
	87760-20**	-	20	18.00	20.00					
	87760-22**	-	22	20.00	22.00					
	87760-24** \triangle 8	-	24	22.00	24.00					
	87760-26**	-	26	24.00	26.00					
D	87760-28**	-	28	26.00	28.00					
	87760-30**	-	30	28.00	30.00					
	87760-32**	-	32	30.00	32.00					
	87760-34**	-	34	32.00	34.00					
	87760-36**	-	36	34.00	36.00					
	87760-38**	-	38	36.00	38.00					
C	87760-40** \triangle 8	-	40	38.00	40.00					
	87760-42**	-	42	40.00	42.00					
	87760-44**	-	44	42.00	44.00					
	87760-46**	-	46	44.00	46.00					
	87760-48**	-	48	46.00	48.00					
	87760-50**	-	50	48.00	50.00					
	87760-5116	5, 6 & 26	50	48.00	50.00					
B	87760-5248	-	28	26.00	28.00	TUBE				

ADD NOTE 8. EEC NO: S2011-0568 2011/01/04 DRWNSKANG 2011/01/24 CHYKATASEE APPR:HLONG 2011/01/25	QUALITY SYMBOLS $\nabla=0$ $\nabla=0$ $\nabla=0$	GENERAL TOLERANCES (UNLESS SPECIFIED)		DIMENSION STYLE MM ONLY		SCALE NTS	DESIGN UNITS METRIC	THIRD ANGLE PROJECTION																
		<table border="1"> <tr> <th></th> <th>mm</th> <th>INCH</th> </tr> <tr> <td>4 PLACES</td> <td>± ---</td> <td>± ---</td> </tr> <tr> <td>3 PLACES</td> <td>± ---</td> <td>± ---</td> </tr> <tr> <td>2 PLACES</td> <td>± 0.2</td> <td>± ---</td> </tr> <tr> <td>1 PLACE</td> <td>± ---</td> <td>± ---</td> </tr> </table>			mm	INCH	4 PLACES	± ---	± ---	3 PLACES	± ---	± ---	2 PLACES	± 0.2	± ---	1 PLACE	± ---	± ---	DRAWN BY: KSEE DATE: 2003/10/15 CHECKED BY: KCL ING DATE: 2003/12/02 APPROVED BY: SKTOH DATE: 2003/12/11		TITLE: MGRID, 2MM DUAL ROW HDR. R/A			
			mm	INCH																				
		4 PLACES	± ---	± ---																				
3 PLACES	± ---	± ---																						
2 PLACES	± 0.2	± ---																						
1 PLACE	± ---	± ---																						
ANGULAR ± 3° DRAFT WHERE APPLICABLE MUST REMAIN WITHIN DIMENSIONS		MATERIAL NO. SEE TABLE		DOCUMENT NO. SD-87760-109		SHEET NO. 2 OF 3		MOLEX INCORPORATED																
THIS DRAWING CONTAINS INFORMATION THAT IS PROPRIETARY TO MOLEX INCORPORATED AND SHOULD NOT BE USED WITHOUT WRITTEN PERMISSION																								

10	9	8	7	6	5	4	3	2	1
PART NUMBER	VOID PIN LOCATION	CKT SIZE	A	B	M	T	PACKAGING TYPE		
87760-531*	-	24	22.00	24.00	REFER TO NOTE 7	150	TRAY		

ADD NOTE 8. EC NO: S2011-0568 DRAWNSKANG 2011/01/04 CHYKATSEE 2011/01/24 APPR:MLONG 2011/01/25 A13	QUALITY SYMBOLS	GENERAL TOLERANCES (UNLESS SPECIFIED)	DIMENSION STYLE	SCALE	DESIGN UNITS	THIRD ANGLE PROJECTION
	▽=0	mm INCH	MM ONLY	NTS	METRIC	☉
	▽=0	4 PLACES ± --- ± ---	DRAWN BY DATE	TITLE		
	▽=0	3 PLACES ± --- ± ---	KSEE 2003/10/15	MGRID, 2MM DUAL ROW HDR. R/A		
	2 PLACES ± 0.2 ± ---	CHECKED BY DATE	MOLEX INCORPORATED			
	1 PLACE ± --- ± ---	KCL ING 2003/12/02	SD-87760-109			
	ANGULAR ± 3 °	APPROVED BY DATE	SHEET NO.			
		SKTOH 2003/12/11	3 OF 3			
	DRAFT WHERE APPLICABLE MUST REMAIN WITHIN DIMENSIONS	MATERIAL NO.	THIS DRAWING CONTAINS INFORMATION THAT IS PROPRIETARY TO MOLEX INCORPORATED AND SHOULD NOT BE USED WITHOUT WRITTEN PERMISSION			
		SEE TABLE				
		SIZE A3				