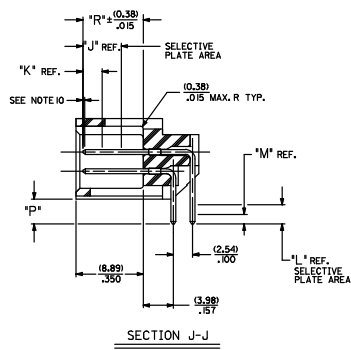
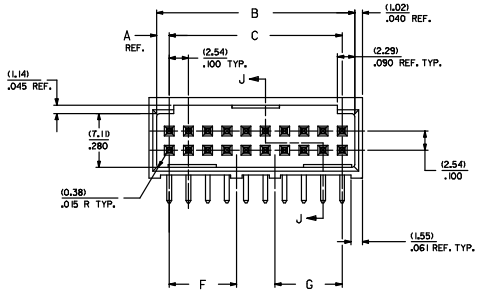
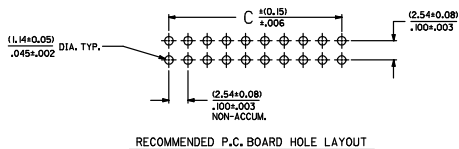
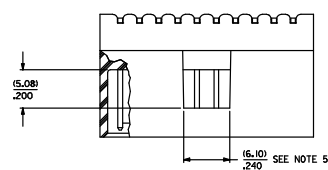


20 19 18 17 16 15 14 13 12 11 10 9 8 7 6 5 4 3 2 1

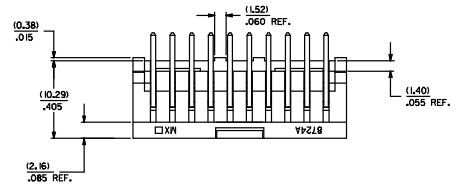


NOTES:

1. MATERIAL: SHROUDED WAFER, GLASS FILLED NYLON, COLOR BLACK, UL94V-0 PINS PHOSPHOR BRONZE
2. FINISH: SEE CHARTS
3. PRODUCT SPECIFICATION: PS-8723
4. PACKAGING INFORMATION: SEE CHARTS
5. WINDOW NOT AVAILABLE ON 6 DKT.
6. FOR CHARTED DIMENSIONS AND ASSEMBLY N.O.S NOT SHOWN ON THIS SHEET - SEE SHEET 2.
7. 20 CIRCUIT SIZE SHOWN FOR ILLUSTRATION PURPOSES.
8. PIN PUSHOUT FORCE: (17.79) N/4 LBS.
9. PINS MUST MEET SOLDERABILITY SPEC. ML-STD-202 METHOD 200B.
10. ROW TO ROW PIN HEIGHT VARIATION MUST NOT EXCEED (0.25)/0.10 IN.
11. THIS PART CONFORMS TO CLASS B REQUIREMENTS OF COSMETIC SPECIFICATION PS-45499-002.

DKT.	DIM. 'A'	DIM. 'B'	DIM. 'C'	DIM. 'D'	DIM. 'E'	DIM. 'F'	DIM. 'G'
06	(1.68) .665	(8.43) .332	(5.08) .200	(1.68) .665			
08	(1.68) .665	(10.97) .432	(7.62) .300	(1.68) .665			
10	(1.68) .665	(13.51) .532	(10.16) .400	(1.68) .665			
12	(1.68) .665	(16.05) .632	(12.70) .500	(1.68) .665			
14	(1.68) .665	(18.59) .732	(15.24) .600	(1.68) .665			
16	(1.68) .665	(21.13) .832	(17.78) .700	(1.68) .665			
18	(1.68) .665	(23.67) .932	(20.32) .800	(1.68) .665			
20	(1.68) .665	(26.21) 1.032	(22.86) .900	(1.68) .665			
22	(1.68) .665	(28.75) 1.132	(25.40) 1.000	(1.68) .665			
24	(1.68) .665	(31.29) 1.232	(27.94) 1.100	(1.68) .665			
26	(1.68) .665	(33.83) 1.332	(30.48) 1.200	(1.68) .665			
28	(1.68) .665	(36.37) 1.432	(33.02) 1.300	(1.68) .665			
30	(1.68) .665	(38.91) 1.532	(35.56) 1.400	(1.68) .665			
32	(1.68) .665	(41.45) 1.632	(38.10) 1.500	(1.68) .665			
34	(1.68) .665	(43.99) 1.732	(40.64) 1.600	(1.68) .665			
36	(1.68) .665	(46.53) 1.832	(43.18) 1.700	(1.68) .665			
38	(1.68) .665	(49.07) 1.932	(45.72) 1.800	(1.68) .665			
40	(1.68) .665	(51.61) 2.032	(48.26) 1.900	(1.68) .665			
42	(1.68) .665	(54.15) 2.132	(50.80) 2.000	(1.68) .665			
44	(1.68) .665	(56.69) 2.232	(53.34) 2.100	(1.68) .665			
46	(1.68) .665	(59.23) 2.332	(55.88) 2.200	(1.68) .665			
48	(1.68) .665	(61.77) 2.432	(58.42) 2.300	(1.68) .665			
50	(1.68) .665	(64.31) 2.532	(60.96) 2.400	(1.68) .665			
52	(1.68) .665	(66.85) 2.632	(63.50) 2.500	(1.68) .665			
54	(1.68) .665	(69.39) 2.732	(66.04) 2.600	(1.68) .665			
56	(1.68) .665	(71.93) 2.832	(68.58) 2.700	(1.68) .665			
58	(1.68) .665	(74.47) 2.932	(71.12) 2.800	(1.68) .665			
60	(1.68) .665	(77.01) 3.032	(73.66) 2.900	(1.68) .665			
62	(1.68) .665	(79.55) 3.132	(76.20) 3.000	(1.68) .665			
64	(1.68) .665	(82.09) 3.232	(78.74) 3.100	(1.68) .665			
66	(1.68) .665	(84.63) 3.332	(81.28) 3.200	(1.68) .665			
68	(1.68) .665	(87.17) 3.432	(83.82) 3.300	(1.68) .665			
70	(1.68) .665	(89.71) 3.532	(86.36) 3.400	(1.68) .665			
72	(1.68) .665	(92.25) 3.632	(88.90) 3.500	(1.68) .665			

ASSEMBLY STYLES "A", "B", AND "G"



ADD. NOTES: EDC: M/C 2008-4539 RY: CHYD-BELL APPROV: 2008/07/20 REV: 2008/07/20	QUALITY SYMBOLS ▽=0 ▽=0	GENERAL TOLERANCES (UNLESS SPECIFIED) 4 PLACES ± .010 3 PLACES ± .015 2 PLACES ± 0.25 1 PLACE ± 0.36 ANGULAR ±1/2°	DIMENSION STYLE MM/IN SCALE: 4:1 DESIGN UNITS: INCH THIRD ANGLE PROJECTION	SALES ASSEMBLY WAFER-RIGHT ANGLE FULLY SHROUDED .100 GRID MOLEX INCORPORATED	SHEET NO. 1 OF 8	
	DRAWN BY: JL DATE: 1986/06/26 CHECKED BY: NB DATE: 1986/06/26 APPROVED BY: MAZ DATE: 1986/06/26	MATERIAL NO.: SEE CHART DOCUMENT NO.: SDA-8724-*****	DRAFT WHERE APPLICABLE MUST REMAIN WITHIN DIMENSIONS	THIS DRAWING CONTAINS INFORMATION THAT IS PROPRIETARY TO MOLEX INCORPORATED AND SHOULD NOT BE USED WITHOUT WRITTEN PERMISSION	MOLEX INCORPORATED	SHEET NO. 1 OF 8

ENGINEERING PART NUMBER A-8724-	RELEASE FOR MANUFACTURE	P REF.	PLATING (SEE NOTES ON THIS SHEET)	CONNECTOR END PLATING			P.C. BOARD END PLATING			PACKAGING INFORMATION
				TYPE	J LENGTH	K MEAS.	R (0.38) ±.015	TYPE	L LENGTH	
06A164 / 72A164	RFM	(3,30) .150	TIN	TIN	(2,54) .100	(6,00) .375	TIN	(1,27) .050	0019	TIN (50) OVER ENTIRE PIN. THICKNESS=(3.75 MICROMETER)/75 MICROINCH MINIMUM. NICKEL (ND) UNDERPLATE OVER ENTIRE PIN.
06B164 / 72B164	RFM	(5,08) .200	TIN	TIN	(2,54) .100	(6,00) .375	TIN	(1,27) .050	0019	IS GOLD SELECTIVE GOLD (Au) IN THE CONTACT AREA. THICKNESS=(0.37 MICROMETER)/5 MICROINCH MINIMUM. SELECTIVE TIN (Sn) IN THE PC TAIL AREA. THICKNESS=(1.88 MICROMETER)/75 MICROINCH MINIMUM. NICKEL (ND) UNDERPLATE OVER ENTIRE PIN.
06A571 / 72A571	RFM	(3,30) .150	IS GOLD	GOLD	(5,08) .200	(2,54) .100	TIN	(2,54) .100	0019	IS GOLD SELECTIVE GOLD (Au) IN THE CONTACT AREA. THICKNESS=(0.75 MICROMETER)/30 MICROINCH MINIMUM. SELECTIVE TIN (Sn) IN THE PC TAIL AREA. THICKNESS=(1.88 MICROMETER)/75 MICROINCH MINIMUM. NICKEL (ND) UNDERPLATE OVER ENTIRE PIN.
06B571 / 72B571	RFM	(5,08) .200	IS GOLD	GOLD	(5,08) .200	(2,54) .100	TIN	(2,54) .100	0019	IS GOLD SELECTIVE GOLD (Au) IN THE CONTACT AREA. THICKNESS=(0.75 MICROMETER)/30 MICROINCH MINIMUM. SELECTIVE TIN (Sn) IN THE PC TAIL AREA. THICKNESS=(1.88 MICROMETER)/75 MICROINCH MINIMUM. NICKEL (ND) UNDERPLATE OVER ENTIRE PIN.
06A574 / 72A574	RFM	(3,30) .150	30 GOLD	GOLD	(5,08) .200	(2,54) .100	TIN	(2,54) .100	0019	30 GOLD SELECTIVE GOLD (Au) IN THE CONTACT AREA. THICKNESS=(0.75 MICROMETER)/30 MICROINCH MINIMUM. SELECTIVE TIN (Sn) IN THE PC TAIL AREA. THICKNESS=(1.88 MICROMETER)/75 MICROINCH MINIMUM. NICKEL (ND) UNDERPLATE OVER ENTIRE PIN.
06B574 / 72B574	RFM	(5,08) .200	30 GOLD	GOLD	(5,08) .200	(2,54) .100	TIN	(2,54) .100	0019	30 GOLD SELECTIVE GOLD (Au) IN THE CONTACT AREA. THICKNESS=(0.75 MICROMETER)/30 MICROINCH MINIMUM. SELECTIVE TIN (Sn) IN THE PC TAIL AREA. THICKNESS=(1.88 MICROMETER)/75 MICROINCH MINIMUM. NICKEL (ND) UNDERPLATE OVER ENTIRE PIN.
06C164 / 72C164	RFM	(3,30) .150	TIN	TIN	(2,54) .100	(6,35) .250	TIN	(1,27) .050	0019	*THE PRIMARY SHIPPING CARTON WILL BE LABELED *COMPLYING TO ROHS DIRECTIVE 2002/95/EC AND ELV ANNEX II OF DIRECTIVE 2000/53/EC. CARTONS WITHOUT THIS LABEL MAY CONTAIN PRODUCT WITH LEAD.

NO. OF CKTS	TIN		IS GOLD		IS GOLD		30 GOLD		30 GOLD		TIN			
	EDP NUMBER	ENG NUMBER	EDP NUMBER	ENG NUMBER	EDP NUMBER	ENG NUMBER	EDP NUMBER	ENG NUMBER	EDP NUMBER	ENG NUMBER	EDP NUMBER	ENG NUMBER		
06	IS-42-7006	A-8724-06A164	IS-42-7105	A-8724-06B164	IS-29-7006	A-8724-06A571	IS-29-7105	A-8724-06B571	IS-41-8006	A-8724-06A574	IS-41-8106	A-8724-06B574	IS-41-9106	A-8724-06C164
08	IS-42-7008	A-8724-08A164	IS-42-7108	A-8724-08B164	IS-29-7008	A-8724-08A571	IS-29-7108	A-8724-08B571	IS-41-8008	A-8724-08A574	IS-41-8108	A-8724-08B574	IS-41-9108	A-8724-08C164
10	IS-42-7010	A-8724-10A164	IS-42-7110	A-8724-10B164	IS-29-7010	A-8724-10A571	IS-29-7110	A-8724-10B571	IS-41-8010	A-8724-10A574	IS-41-8110	A-8724-10B574	IS-41-9110	A-8724-10C164
12	IS-42-7012	A-8724-12A164	IS-42-7112	A-8724-12B164	IS-29-7012	A-8724-12A571	IS-29-7112	A-8724-12B571	IS-41-8012	A-8724-12A574	IS-41-8112	A-8724-12B574	IS-41-9112	A-8724-12C164
14	IS-42-7014	A-8724-14A164	IS-42-7114	A-8724-14B164	IS-29-7014	A-8724-14A571	IS-29-7114	A-8724-14B571	IS-41-8014	A-8724-14A574	IS-41-8114	A-8724-14B574	IS-41-9114	A-8724-14C164
16	IS-42-7016	A-8724-16A164	IS-42-7116	A-8724-16B164	IS-29-7016	A-8724-16A571	IS-29-7116	A-8724-16B571	IS-41-8016	A-8724-16A574	IS-41-8116	A-8724-16B574	IS-41-9116	A-8724-16C164
18	IS-42-7018	A-8724-18A164	IS-42-7118	A-8724-18B164	IS-29-7018	A-8724-18A571	IS-29-7118	A-8724-18B571	IS-41-8018	A-8724-18A574	IS-41-8118	A-8724-18B574	IS-41-9118	A-8724-18C164
20	IS-42-7020	A-8724-20A164	IS-42-7120	A-8724-20B164	IS-29-7020	A-8724-20A571	IS-29-7120	A-8724-20B571	IS-41-8020	A-8724-20A574	IS-41-8120	A-8724-20B574	IS-41-9120	A-8724-20C164
22	IS-42-7022	A-8724-22A164	IS-42-7122	A-8724-22B164	IS-29-7022	A-8724-22A571	IS-29-7122	A-8724-22B571	IS-41-8022	A-8724-22A574	IS-41-8122	A-8724-22B574	IS-41-9122	A-8724-22C164
24	IS-42-7024	A-8724-24A164	IS-42-7124	A-8724-24B164	IS-29-7024	A-8724-24A571	IS-29-7124	A-8724-24B571	IS-41-8024	A-8724-24A574	IS-41-8124	A-8724-24B574	IS-41-9124	A-8724-24C164
26	IS-42-7026	A-8724-26A164	IS-42-7126	A-8724-26B164	IS-29-7026	A-8724-26A571	IS-29-7126	A-8724-26B571	IS-41-8026	A-8724-26A574	IS-41-8126	A-8724-26B574	IS-41-9126	A-8724-26C164
28	IS-42-7028	A-8724-28A164	IS-42-7128	A-8724-28B164	IS-29-7028	A-8724-28A571	IS-29-7128	A-8724-28B571	IS-41-8028	A-8724-28A574	IS-41-8128	A-8724-28B574	IS-41-9128	A-8724-28C164
30	IS-42-7030	A-8724-30A164	IS-42-7130	A-8724-30B164	IS-29-7030	A-8724-30A571	IS-29-7130	A-8724-30B571	IS-41-8030	A-8724-30A574	IS-41-8130	A-8724-30B574	IS-41-9130	A-8724-30C164
32	IS-42-7032	A-8724-32A164	IS-42-7132	A-8724-32B164	IS-29-7032	A-8724-32A571	IS-29-7132	A-8724-32B571	IS-41-8032	A-8724-32A574	IS-41-8132	A-8724-32B574	IS-41-9132	A-8724-32C164
34	IS-42-7034	A-8724-34A164	IS-42-7134	A-8724-34B164	IS-29-7034	A-8724-34A571	IS-29-7134	A-8724-34B571	IS-41-8034	A-8724-34A574	IS-41-8134	A-8724-34B574	IS-41-9134	A-8724-34C164
36	IS-42-7036	A-8724-36A164	IS-42-7136	A-8724-36B164	IS-29-7036	A-8724-36A571	IS-29-7136	A-8724-36B571	IS-41-8036	A-8724-36A574	IS-41-8136	A-8724-36B574	IS-41-9136	A-8724-36C164
38	IS-42-7038	A-8724-38A164	IS-42-7138	A-8724-38B164	IS-29-7038	A-8724-38A571	IS-29-7138	A-8724-38B571	IS-41-8038	A-8724-38A574	IS-41-8138	A-8724-38B574	IS-41-9138	A-8724-38C164
40	IS-42-7040	A-8724-40A164	IS-42-7140	A-8724-40B164	IS-29-7040	A-8724-40A571	IS-29-7140	A-8724-40B571	IS-41-8040	A-8724-40A574	IS-41-8140	A-8724-40B574	IS-41-9140	A-8724-40C164
42	IS-42-7042	A-8724-42A164	IS-42-7142	A-8724-42B164	IS-29-7042	A-8724-42A571	IS-29-7142	A-8724-42B571	IS-41-8042	A-8724-42A574	IS-41-8142	A-8724-42B574	IS-41-9142	A-8724-42C164
44	IS-42-7044	A-8724-44A164	IS-42-7144	A-8724-44B164	IS-29-7044	A-8724-44A571	IS-29-7144	A-8724-44B571	IS-41-8044	A-8724-44A574	IS-41-8144	A-8724-44B574	IS-41-9144	A-8724-44C164
46	IS-42-7046	A-8724-46A164	IS-42-7146	A-8724-46B164	IS-29-7046	A-8724-46A571	IS-29-7146	A-8724-46B571	IS-41-8046	A-8724-46A574	IS-41-8146	A-8724-46B574	IS-41-9146	A-8724-46C164
48	IS-42-7048	A-8724-48A164	IS-42-7148	A-8724-48B164	IS-29-7048	A-8724-48A571	IS-29-7148	A-8724-48B571	IS-41-8048	A-8724-48A574	IS-41-8148	A-8724-48B574	IS-41-9148	A-8724-48C164
50	IS-42-7050	A-8724-50A164	IS-42-7150	A-8724-50B164	IS-29-7050	A-8724-50A571	IS-29-7150	A-8724-50B571	IS-41-8050	A-8724-50A574	IS-41-8150	A-8724-50B574	IS-41-9150	A-8724-50C164
52	IS-42-7052	A-8724-52A164	IS-42-7152	A-8724-52B164	IS-29-7052	A-8724-52A571	IS-29-7152	A-8724-52B571	IS-41-8052	A-8724-52A574	IS-41-8152	A-8724-52B574	IS-41-9152	A-8724-52C164
54	IS-42-7054	A-8724-54A164	IS-42-7154	A-8724-54B164	IS-29-7054	A-8724-54A571	IS-29-7154	A-8724-54B571	IS-41-8054	A-8724-54A574	IS-41-8154	A-8724-54B574	IS-41-9154	A-8724-54C164
56	IS-42-7056	A-8724-56A164	IS-42-7156	A-8724-56B164	IS-29-7056	A-8724-56A571	IS-29-7156	A-8724-56B571	IS-41-8056	A-8724-56A574	IS-41-8156	A-8724-56B574	IS-41-9156	A-8724-56C164
58	IS-42-7058	A-8724-58A164	IS-42-7158	A-8724-58B164	IS-29-7058	A-8724-58A571	IS-29-7158	A-8724-58B571	IS-41-8058	A-8724-58A574	IS-41-8158	A-8724-58B574	IS-41-9158	A-8724-58C164
60	IS-42-7060	A-8724-60A164	IS-42-7160	A-8724-60B164	IS-29-7060	A-8724-60A571	IS-29-7160	A-8724-60B571	IS-41-8060	A-8724-60A574	IS-41-8160	A-8724-60B574	IS-41-9160	A-8724-60C164
62	IS-42-7062	A-8724-62A164	IS-42-7162	A-8724-62B164	IS-29-7062	A-8724-62A571	IS-29-7162	A-8724-62B571	IS-41-8062	A-8724-62A574	IS-41-8162	A-8724-62B574	IS-41-9162	A-8724-62C164
64	IS-42-7064	A-8724-64A164	IS-42-7164	A-8724-64B164	IS-29-7064	A-8724-64A571	IS-29-7164	A-8724-64B571	IS-41-8064	A-8724-64A574	IS-41-8164	A-8724-64B574	IS-41-9164	A-8724-64C164
66	IS-42-7066	A-8724-66A164	IS-42-7166	A-8724-66B164	IS-29-7066	A-8724-66A571	IS-29-7166	A-8724-66B571	IS-41-8066	A-8724-66A574	IS-41-8166	A-8724-66B574	IS-41-9166	A-8724-66C164
68	IS-42-7068	A-8724-68A164	IS-42-7168	A-8724-68B164	IS-29-7068	A-8724-68A571	IS-29-7168	A-8724-68B571	IS-41-8068	A-8724-68A574	IS-41-8168	A-8724-68B574	IS-41-9168	A-8724-68C164
70	IS-42-7070	A-8724-70A164	IS-42-7170	A-8724-70B164	IS-29-7070	A-8724-70A571	IS-29-7170	A-8724-70B571	IS-41-8070	A-8724-70A574	IS-41-8170	A-8724-70B574	IS-41-9170	A-8724-70C164
72	IS-42-7072	A-8724-72A164	IS-42-7172	A-8724-72B164	IS-29-7072	A-8724-72A571	IS-29-7172	A-8724-72B571	IS-41-8072	A-8724-72A574	IS-41-8172	A-8724-72B574	IS-41-9172	A-8724-72C164

UPDATE TITLE BLOCK DATE: 2006-05-29 DRAWN BY: RY CHECKED BY: RY APPROVED BY: RY DATE: 2006/07/28 DATE: 2006/07/28 DATE: 2006/07/28	QUALITY SYMBOLS 0 = 0 1 = 1 2 = 2 3 = 3 4 = 4 5 = 5 6 = 6 7 = 7 8 = 8 9 = 9 10 = 10 11 = 11 12 = 12 13 = 13 14 = 14 15 = 15 16 = 16 17 = 17 18 = 18 19 = 19 20 = 20	GENERAL TOLERANCES (UNLESS SPECIFIED) DIMENSION STYLE: MM/IN SCALE: --- DESIGN UNITS: INCH THIRD ANGLE PROJECTION	DRAWN BY: JL DATE: 1986/06/26 CHECKED BY: NB DATE: 1986/06/26 APPROVED BY: WAZ DATE: 1986/06/26 MATERIAL NO.: SEE CHART DOCUMENT NO.: SDA-8724-***** SHEET NO.: 2 OF 8